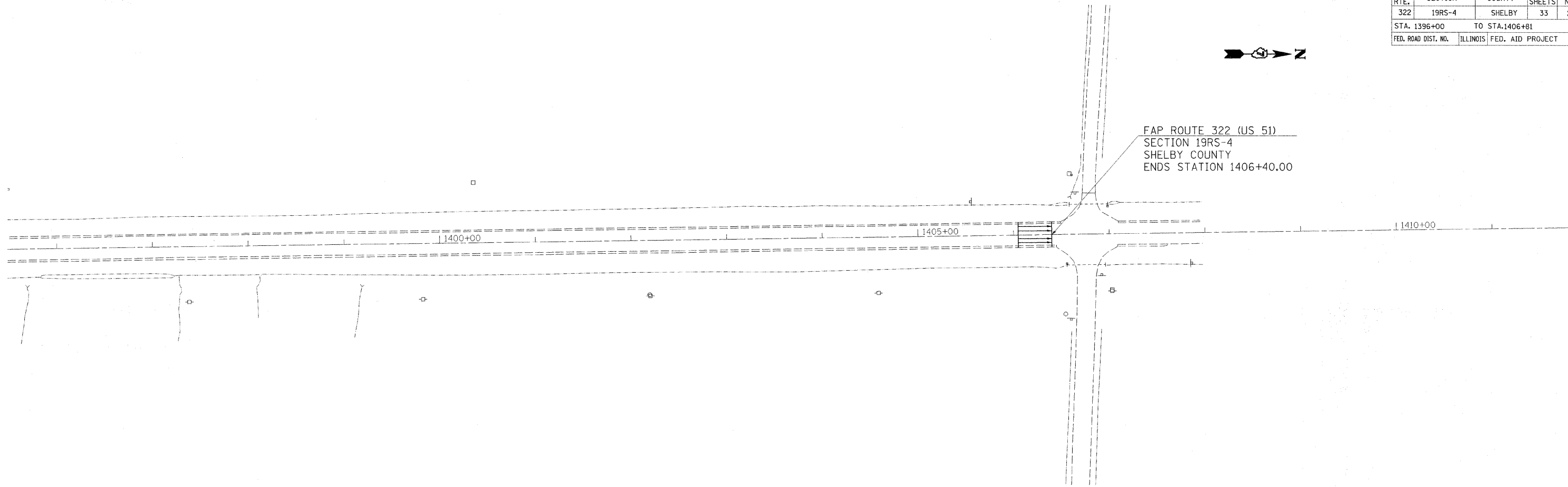


F.A.P. RTE.	SECTION	COUNTY	TOTAL SHEETS	SHEET NO.
322	19RS-4	SHELBY	33	29
STA. 1396+00		TO STA. 1406+81		
FED. ROAD DIST. NO.	ILLINOIS	FED. AID PROJECT		



FAP ROUTE 322 (US 51)
SECTION 19RS-4
SHELBY COUNTY
ENDS STATION 1406+40.00



REVISIONS	
NAME	DATE

ILLINOIS DEPARTMENT OF TRANSPORTATION

STA. 1396 + 00
TO
STA. 1406 + 81

SCALE: VERT. _____
HORIZ. _____
DATE _____ DRAWN BY _____
CHECKED BY _____