

F.A.P. RTE.	SECTION	COUNTY	TOTAL SHEETS	SHEET NO.
91	D7 BEAM REPAIR 2008-3	COLES	6	1
FED. ROAD DIST. NO.		ILLINOIS	CONTRACT NO. 74291	

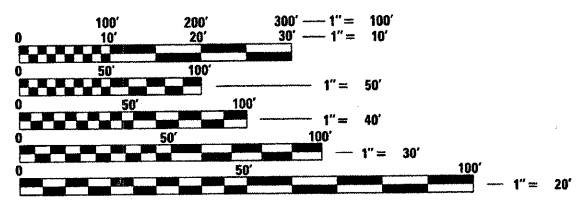
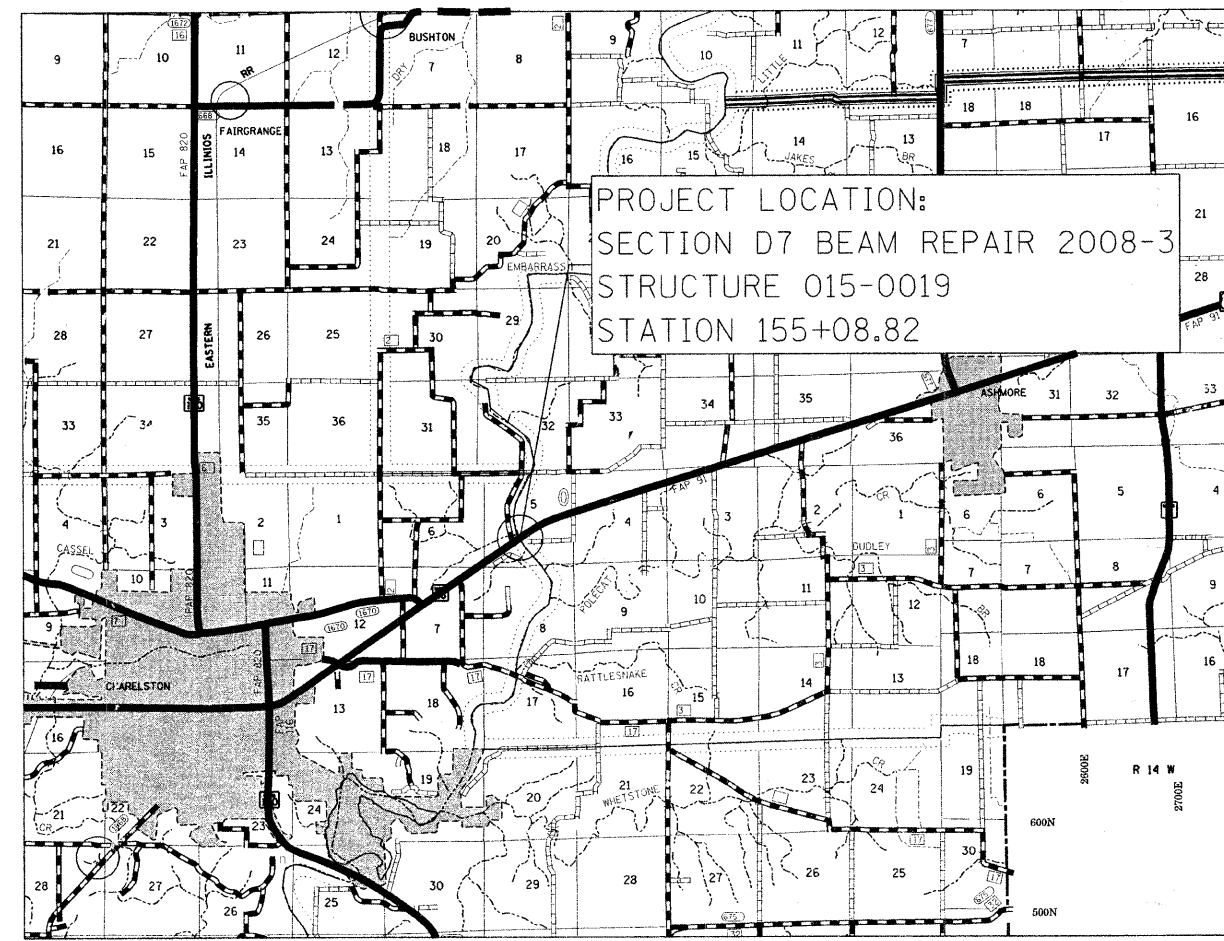
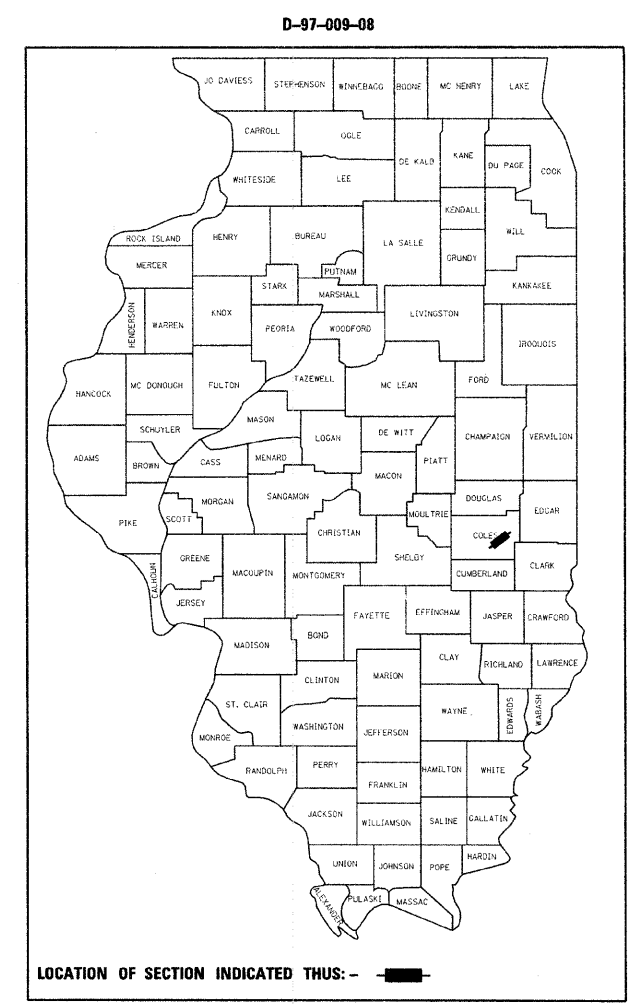
STATE OF ILLINOIS
DEPARTMENT OF TRANSPORTATION
DIVISION OF HIGHWAYS

PROPOSED
HIGHWAY PLANS

FAP 91 (IL 16)
SECTION D7 BEAM REPAIR 2008-3

COLES COUNTY
C-97-037-08

FOR INDEX OF SHEETS, SEE SHEET NO. 2



FULL SIZE PLANS HAVE BEEN PREPARED USING STANDARD ENGINEERING SCALES. REDUCED SIZED PLANS WILL NOT CONFORM TO STANDARD SCALES. IN MAKING MEASUREMENTS ON REDUCED PLANS, THE ABOVE SCALES MAY BE USED.

J.U.L.I.E.
JOINT UTILITY LOCATION INFORMATION FOR EXCAVATION
1-800-892-0123
OR 811

PROJECT ENGINEER: MARK DAUGHERTY
PROJECT MANAGER: SARAH KREKE

CONTRACT NO. 74291

STATE OF ILLINOIS
DEPARTMENT OF TRANSPORTATION
DIVISION OF HIGHWAYS

SUBMITTED February 15, 2008

Christine M. Reed
DEPUTY DIRECTOR OF HIGHWAYS, REGION ENGINEER

March 21, 2008
Eric E. Horn
ENGINEER OF DESIGN AND ENVIRONMENT

March 21, 2008
Christine M. Reed
DIRECTOR OF HIGHWAYS, CHIEF ENGINEER

PRINTED BY THE AUTHORITY
OF THE STATE OF ILLINOIS