

F.A.P. RTE.	SECTION	COUNTY	TOTAL SHEETS	SHEET NO.
828	D7 BEAM REPAIR 2008-4	CUMBERLAND	6	1
FED. ROAD DIST. NO.	ILLINOIS	CONTRACT NO. 74301		

STATE OF ILLINOIS
DEPARTMENT OF TRANSPORTATION

DIVISION OF HIGHWAYS

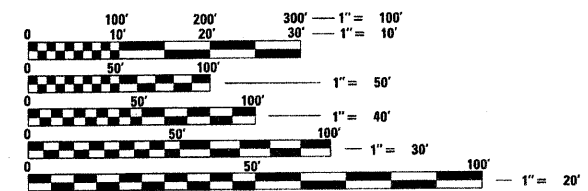
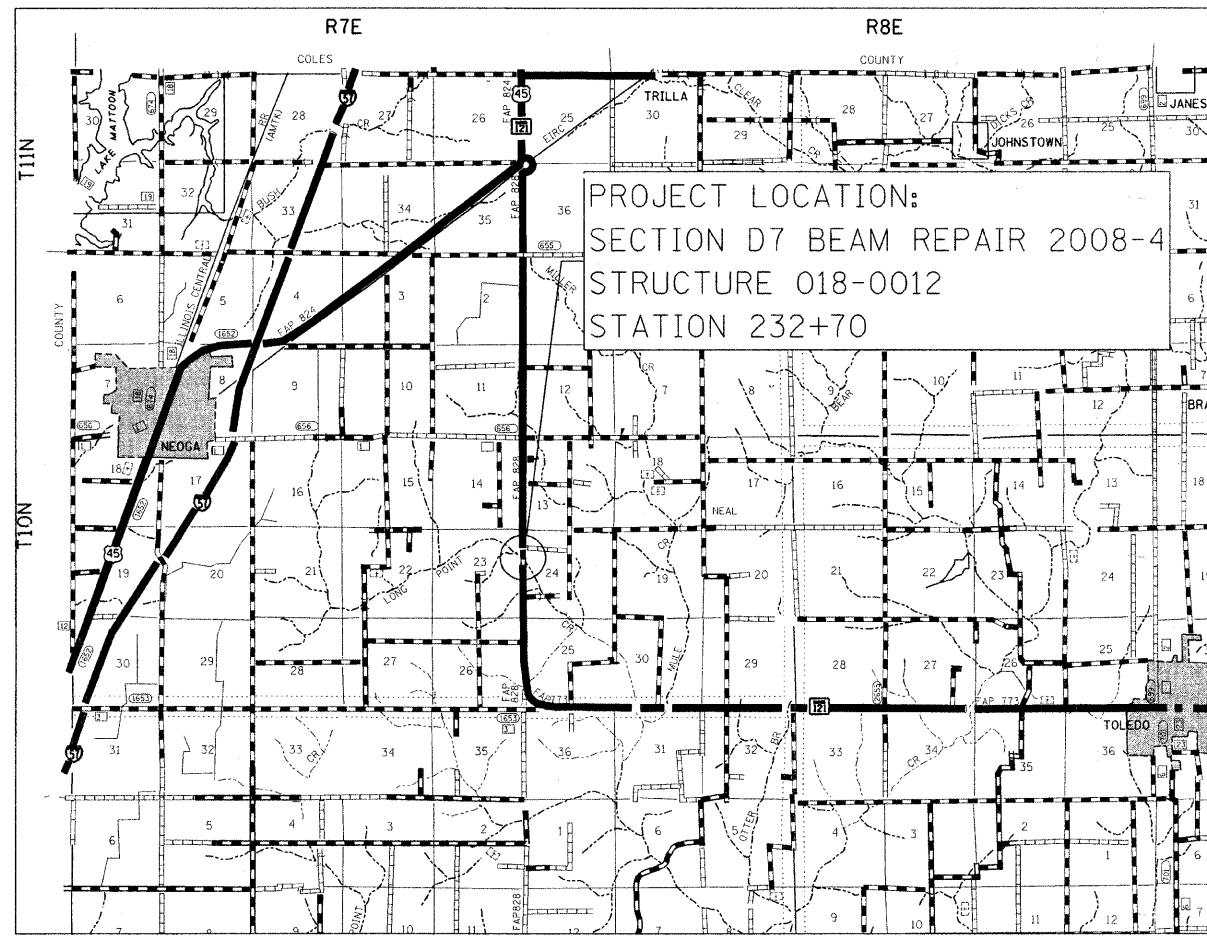
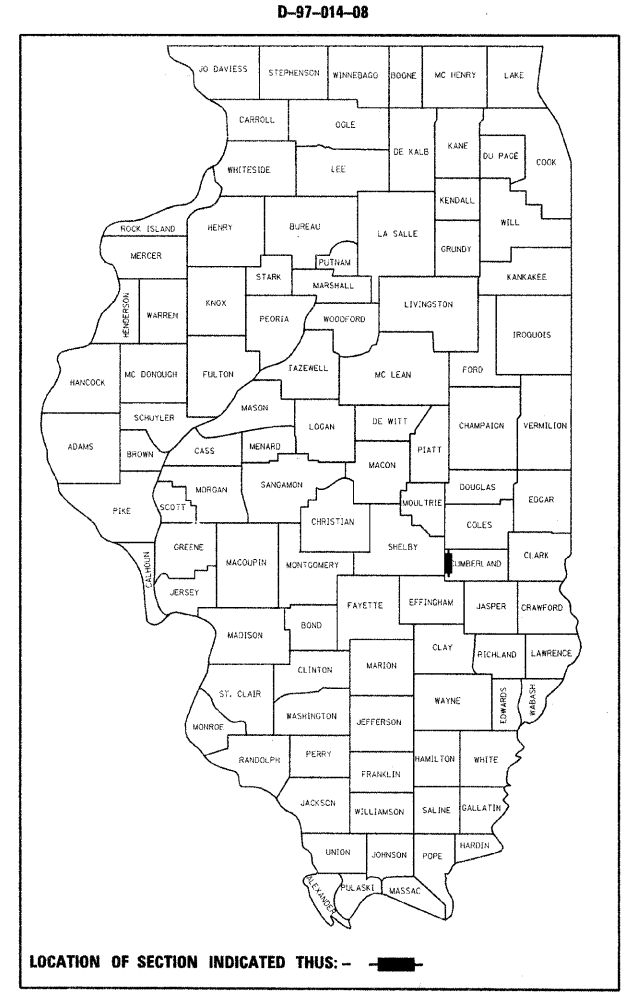
PROPOSED
HIGHWAY PLANS

FAP ROUTE 828 (IL 121)
SECTION D7 BEAM REPAIR 2008-4

CUMBERLAND COUNTY

C-97-052-08

FOR INDEX OF SHEETS, SEE SHEET NO. 2



FULL SIZE PLANS HAVE BEEN PREPARED USING STANDARD ENGINEERING SCALES. REDUCED SIZED PLANS WILL NOT CONFORM TO STANDARD SCALES. IN MAKING MEASUREMENTS ON REDUCED PLANS, THE ABOVE SCALES MAY BE USED.

J.U.L.I.E.
JOINT UTILITY LOCATION INFORMATION FOR EXCAVATION
1-800-892-0123
OR 811

PROJECT ENGINEER MARK DAUGHERTY
PROJECT ENGINEER SARAH KREKE

CONTRACT NO. 74301

STATE OF ILLINOIS
DEPARTMENT OF TRANSPORTATION
DIVISION OF HIGHWAYS

SUBMITTED February 5, 2008

Christine M. Reed
DEPUTY DIRECTOR OF HIGHWAYS, REGION ENGINEER

March 21, 2008
Eric E. Harrel
ENGINEER OF DESIGN AND ENVIRONMENT

March 21, 2008
Christine M. Reed
DIRECTOR OF HIGHWAYS, CHIEF ENGINEER

PRINTED BY THE AUTHORITY
OF THE STATE OF ILLINOIS

GENERAL NOTES

PLAN DIMENSIONS AND DETAILS RELATIVE TO THE EXISTING STRUCTURE HAVE BEEN TAKEN FROM EXISTING PLANS AND ARE SUBJECT TO NOMINAL CONSTRUCTION VARIATIONS. IT SHALL BE THE RESPONSIBILITY OF THE CONTRACTOR TO VERIFY SUCH DIMENSIONS AND DETAILS IN THE FIELD AND MAKE NECESSARY APPROVED ADJUSTMENTS PRIOR TO THE CONSTRUCTION OR ORDERING OF MATERIAL. SUCH VARIATIONS SHALL NOT BE CAUSE FOR ADDITIONAL COMPENSATION OR A CHANGE IN THE SCOPE OF THE WORK. THE CONTRACTOR WILL BE PAID FOR THE QUANTITY ACTUALLY FURNISHED AT THE UNIT PRICE BID FOR THE WORK.

INDEX OF SHEETS

SHEET NO.	ITEM
1	COVER SHEET
2	INDEX OF SHEETS, AND GENERAL NOTES
3	SUMMARY OF QUANTITIES
4	TYPICAL SECTION & PLAN VIEW
5-6	BRIDGE PLANS

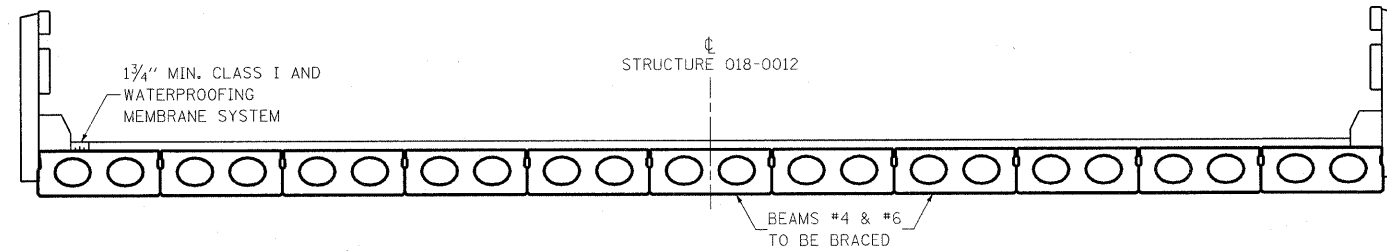
THE FOLLOWING STANDARDS ARE A PART OF THESE PLANS AND ARE INCLUDED AFTER SHEET NO. 6:

STD. NO.	DESCRIPTION
00001-05	STANDARD SYMBOLS, ABBREVIATIONS AND PATTERNS
701001-01	OFF-RD OPERATIONS, 2L, 2W MORE THAN 15' AWAY
701006-02	OFF-RD OPERATIONS, 2L, 2W, 15' TO 24" FROM PAVEMENT EDGE
701201-02	LANE CLOSURE, 2L, 2W, DAY ONLY, FOR SPEEDS > 45 MPH
701901	TRAFFIC CONTROL DEVICES

FILE NAME = c:\projects\74301d\htcover_74301.dgn	USER NAME = stefanmk	DESIGNED -	REVISED -	STATE OF ILLINOIS DEPARTMENT OF TRANSPORTATION	GENERAL NOTES & INDEX OF SHEETS				F.A.P. RTE.	SECTION	COUNTY	TOTAL SHEETS	SHEET NO.
	PLOT SCALE = 20.0000' / 1" IN.	CHECKED -	REVISED -						828	D7 BEAM REPAIR 2008-4	CUMBERLAND	6	2
PLOT DATE = 2/5/2008	DATE -	REVISED -		SCALE:	SHEET NO.	OF	SHEETS	STA.	TO STA.	FED. ROAD DIST. NO. ILLINOIS FED. AID PROJECT CONTRACT NO. 74301			

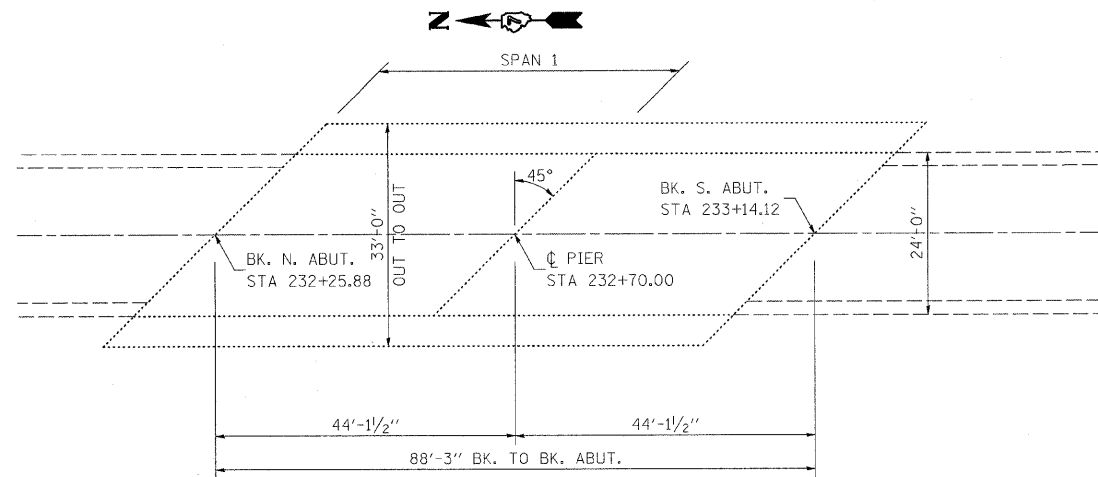
SUMMARY OF QUANTITIES			TOTAL QUANTITIES	CONSTRUCTION TYPE CODE	
CODE NO	ITEM	UNIT		SFTY-2A 100% STATE	
50500405	FURNISHING AND ERECTING STRUCTURAL STEEL	POUND	10740	10740	
67100100	MOBILIZATION	L SUM	1	1	
70100450	TRAFFIC CONTROL AND PROTECTION, STANDARD 701201	L SUM	1	1	

FILE NAME = c:\projects\74301d\shsqa.74301.dgn	USER NAME = steffenmk	DESIGNED -	REVISED -	STATE OF ILLINOIS DEPARTMENT OF TRANSPORTATION	SUMMARY OF QUANTITIES	F.A.P. RTE.	SECTION	COUNTY	TOTAL SHEETS	SHEET NO.	
		DRAWN -	REVISED -			828	D7 BEAM REPAIR 2008-4	CUMBERLAND	6	3	
		CHECKED -	REVISED -			CONTRACT NO. 74301					
		DATE -	REVISED -			SCALE:	SHEET NO.	OF	SHEETS	STA.	TO STA.



11 - 21" PPC DECK BEAMS @ 3'-0" = 33'-0"

TYPICAL SECTION OF SPAN 1



PLAN

FILE NAME = c:\projects\74301d\shhtyp.74301.dgn	USER NAME = steffenmk	DESIGNED -	REVISED -	STATE OF ILLINOIS DEPARTMENT OF TRANSPORTATION	TYPICAL SECTION AND PLAN VIEW			F.A.P. RTE.	SECTION	COUNTY	TOTAL SHEETS	SHEET NO.			
	PLOT SCALE = 20,000' / IN.	DRAWN -	REVISED -		SCALE:	SHEET NO.	OF	SHEETS	STA.	TO STA.	828	D7 BEAM REPAIR 2008-4	CUMBERLAND	6	4
	PLOT DATE = 2/5/2009	CHECKED -	REVISED -								CONTRACT NO. 74301				
		DATE -	REVISED -								FED. ROAD DIST. NO. ILLINOIS FED. AID PROJECT				

STATE OF ILLINOIS
DEPARTMENT OF TRANSPORTATION

ROUTE NO.	SECTION	COUNTY	TOTAL SHEETS	SHEET NO.	SHEET NO. 1
FAP 828		CUMBERLAND	6	5	2 SHEETS
FED. ROAD DIST. NO. 7	ILLINOIS	FED. AID PROJECT-			

Contract Number: 74301

* Contractor is to verify beam length prior to ordering material. (See Detail A). Other sections meeting the section modulus requirements shown may be allowed subject to approval by the Bureau of Bridges and Structures, however, no additional payment will be allowed if the contractor chooses a heavier steel section than the one specified in the plans.
Maximum girder depth = 33". Min. $S_x = 304 \text{ in}^3$.

GENERAL NOTES

All structural steel shall conform to AASHTO Classification M-270 Gr. 36, unless otherwise noted.
Plan dimensions and details relative to existing plans are subject to routine variations. The Contractor shall field verify existing dimensions and details affecting new construction and make necessary approved adjustments prior to construction or ordering of materials. Such variations shall not be cause for additional compensation for a change in scope of the work, however, the Contractor will be paid for the quantity actually furnished based upon the unit price bid for the work.

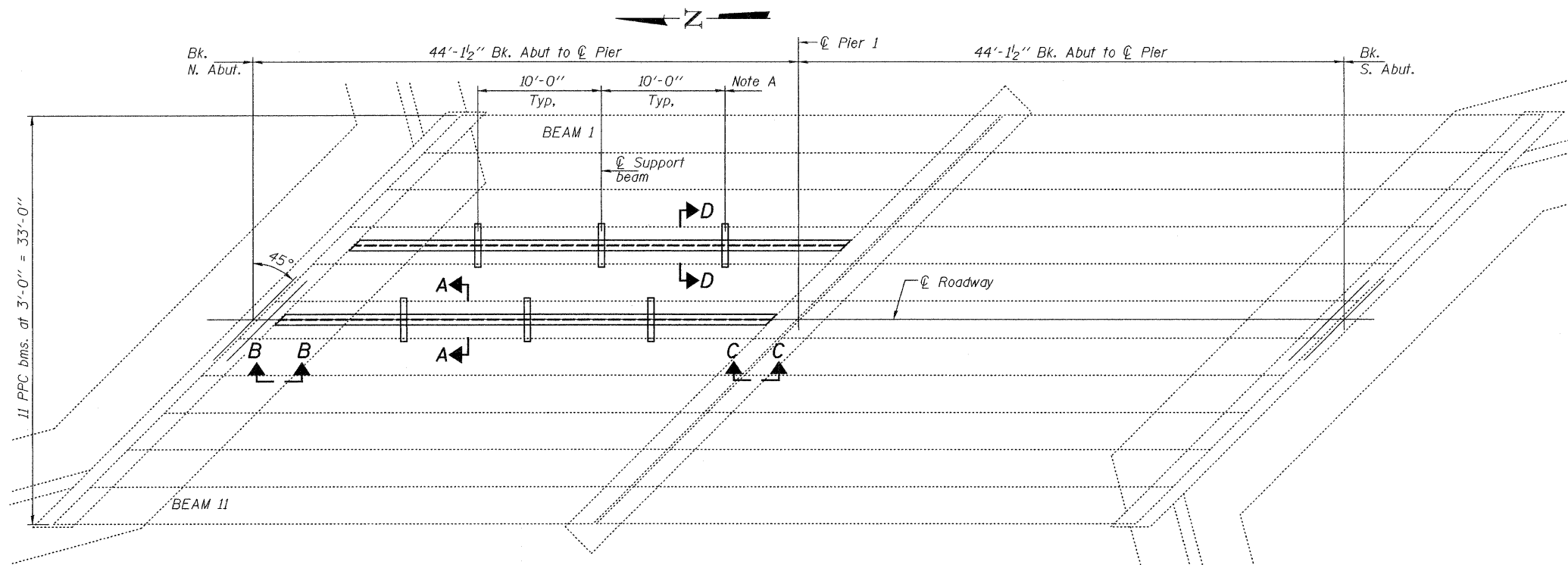
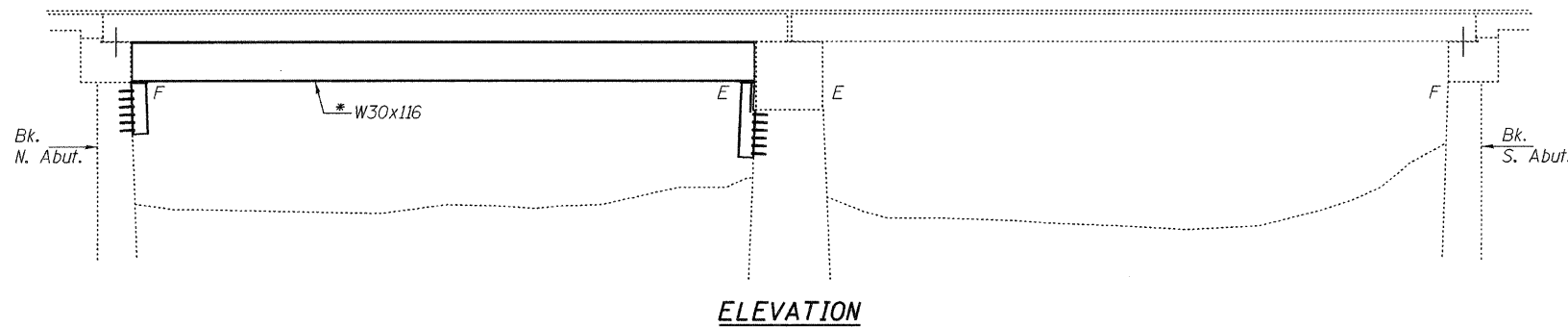
See Section 584 of the Standard Specifications for Epoxy Grouting of Threaded Rods.

The cost of epoxy grouting threaded rods shall be included with Furnishing and Erecting Structural Steel.

The Contractor has the option of using used steel. See special provisions.

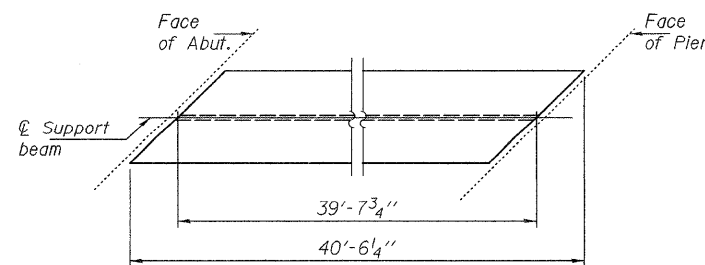
The contractor is advised that the existing PPC Deck Beams are in a deteriorated condition with reduced load carrying capacity. It is the contractors responsibility to account for the condition of the beams when developing construction procedures.

If the contractor's procedure for placement of beams involves placement of cranes or other heavy equipment on the bridge, a detailed procedure shall be submitted to the Engineer for approval. The procedure shall include calculations, prepared and sealed by an Illinois Licensed Structural Engineer, verifying that the equipment and procedure used will not overstress the existing beams. To distribute load to multiple beams and protect the existing surface, in all cases a double layer mat of heavy timbers shall be used at all times under crane tracks or wheels and any outriggers in the down position. If necessary, shims shall be used under the crane mat to ensure uniform contact with the underlying beams.

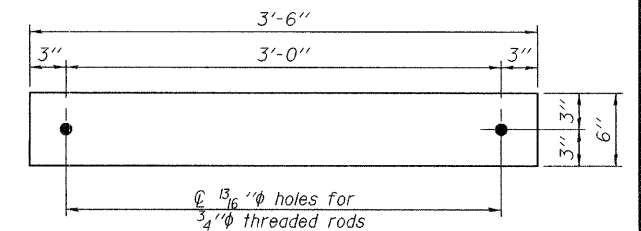


See sheet 2 of 2 for Sections.

Note A:
C Transverse tie plates. Place additional shims at midpoints between tie plates. Securely weld shims to top flange of support beam. Minimum shim size is 6" x flange width.



DETAIL A



TRANSVERSE TIE PL'S

PL A 1/2" x 3'-6" x 6" (6 Req'd)

TOTAL BILL OF MATERIAL

ITEM	UNIT	QUANTITY
Furnishing and Erecting Structural Steel	Pound	10740

PLAN AND ELEVATION
FAP 828 OVER LONG POINT CREEK
CUMBERLAND COUNTY
SN 018-0012

DESIGNED	Victor H. Veliz
CHECKED	[Signature]
DRAWN	baliva
CHECKED	VHV ASB

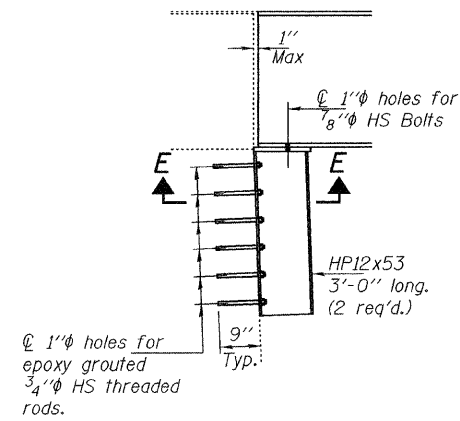
EXAMINED	[Signature]	FEBRUARY 22, 2008
PASSED	[Signature]	



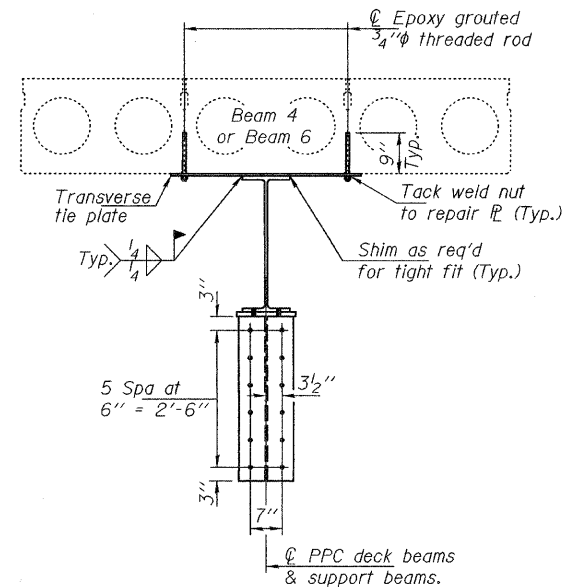
Expires: November 30, 2008

STATE OF ILLINOIS
DEPARTMENT OF TRANSPORTATION

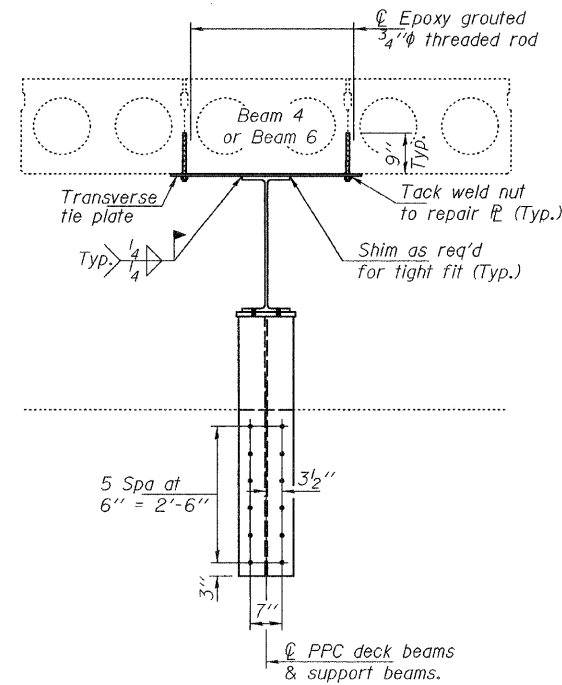
ROUTE NO.	SECTION	COUNTY	TOTAL SHEETS	SHEET NO.	SHEET NO. 2 2 SHEETS
FAP 828		CUMBERLAND	6	6	
FED. ROAD DIST. NO. 7	ILLINOIS	FED. AID PROJECT	Contract Number: 74301		



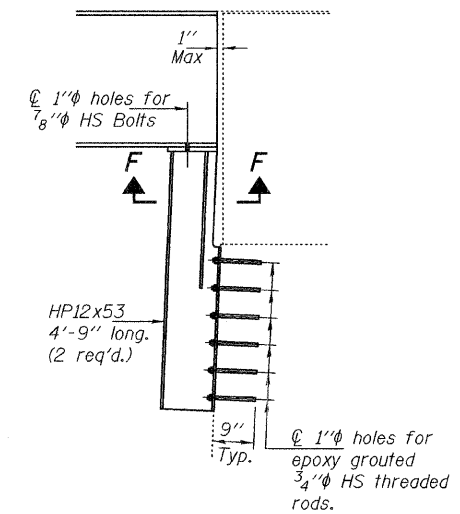
SECTION B-B



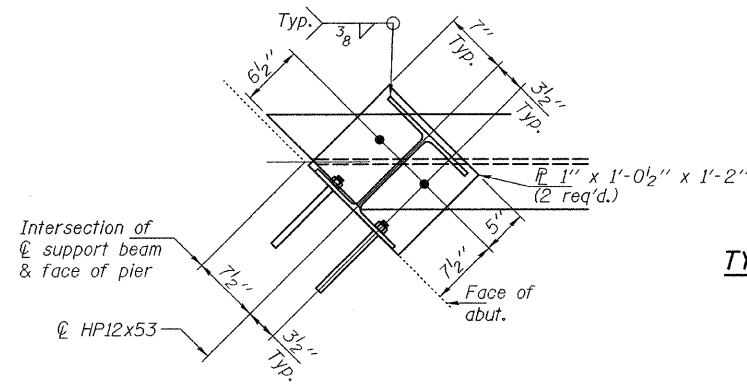
SECTION A-A



SECTION D-D

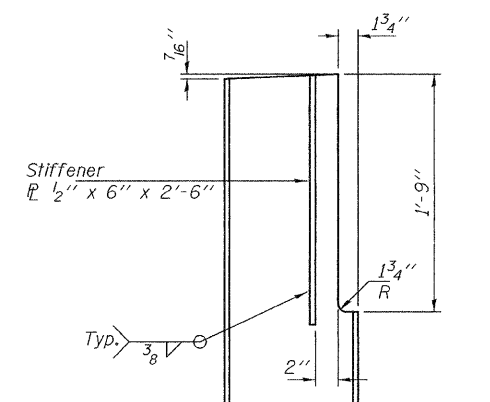


SECTION C-C

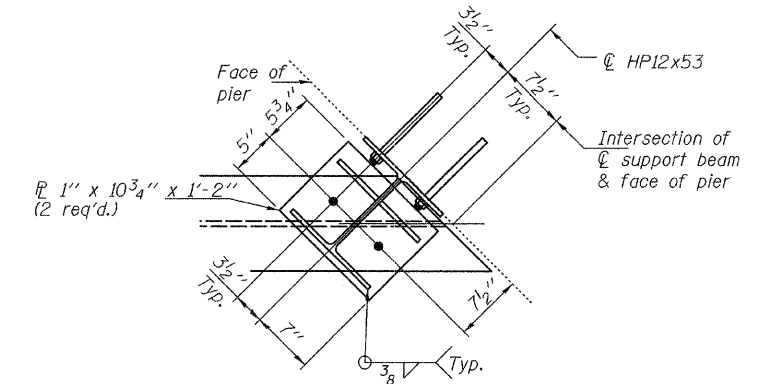


SECTION E-E

TYPICAL HP SLOPE CUT AT ABUTMENT



PARTIAL HP SECTION AT PIER



SECTION F-F

DESIGNED	VHV
CHECKED	AJB
DRAWN	baliva
CHECKED	VHV AJB

FEBRUARY 22, 2008
 EXAMINED *Carl Perry*
 ENGINEER OF STRUCTURAL SERVICES
 PASSED *Ralph E. Anderson*
 ENGINEER OF BRIDGES AND STRUCTURES

REPAIR DETAILS
FAP 828 OVER LONG POINT CREEK
CUMBERLAND COUNTY
SN 018-0012