

STATE OF ILLINOIS
DEPARTMENT OF TRANSPORTATION

ROUTE NO.	SECTION	COUNTY	TOTAL SHEETS	SHEET NO.	SHEET NO. 14
F.A.P. 782	115BR-1	Hardin	83	33	16 SHEETS
FED. ROAD DIST. NO. 7	ILLINOIS	FED. AID PROJECT-			

Contract #78026

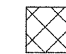
NOTES


See Sheet 8 of 16 for Sections Thru Abutment views and additional reinforcement details for abutment Hatch-Block and Approach Footing.

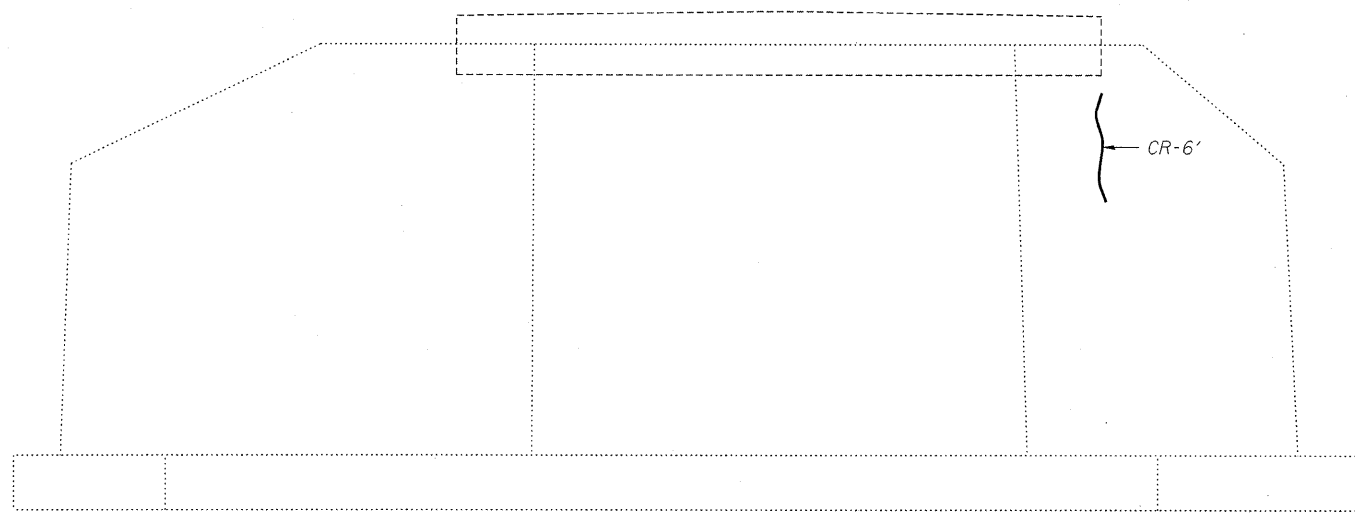
The existing abutment bearing seat is to be inspected by the Engineer after deck beam removal. Deteriorated concrete areas shall be repaired if deemed necessary using Structural Repair of Concrete (Depth equal to or less than 5"). Concrete Sealer shall be applied to Concrete Repair areas. Cost included in Concrete Repair item.

Abutment Structural Repair of Concrete areas and Crack Repair lengths are estimated from a 10/24/2007 inspection.

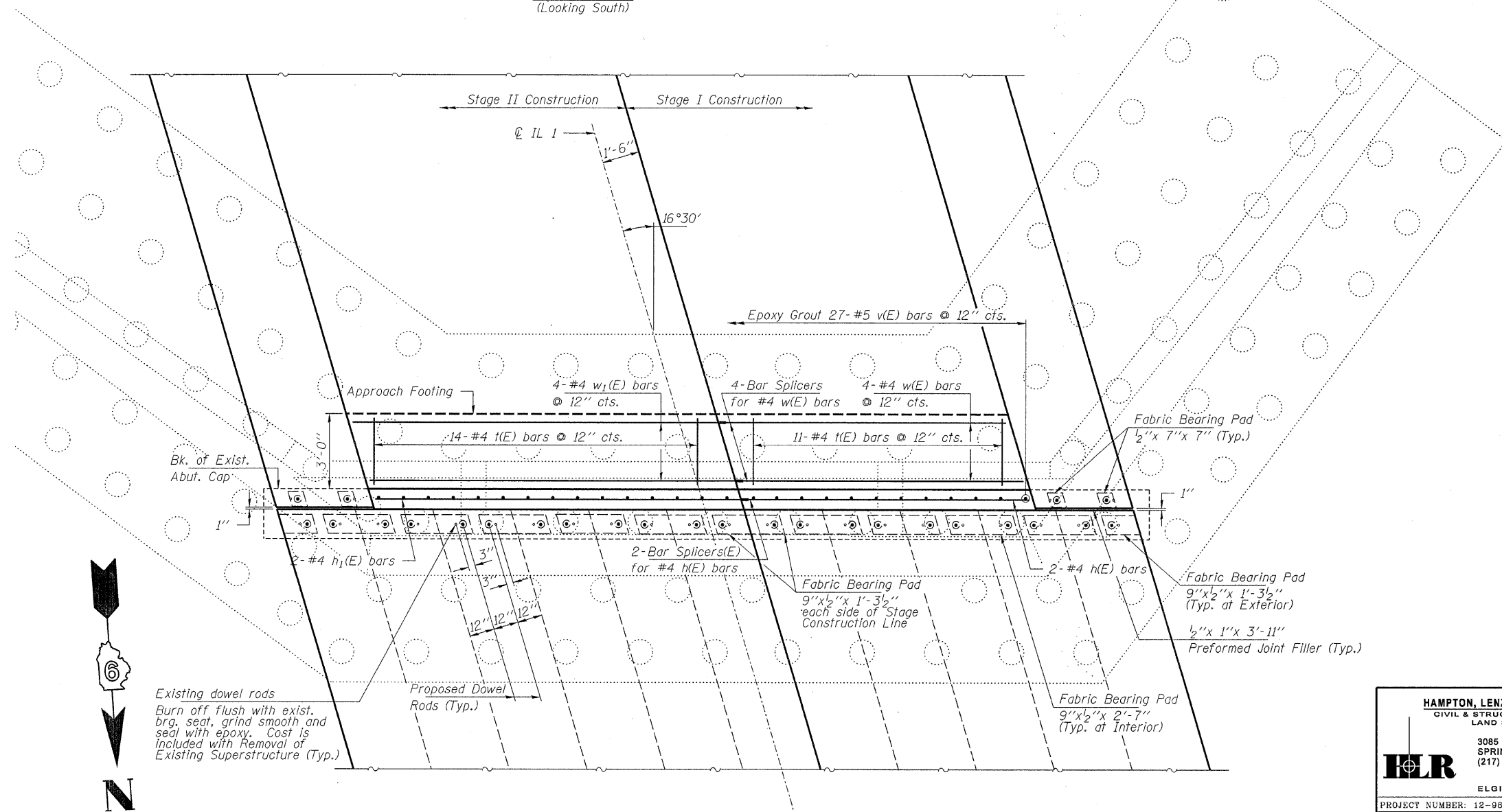
REPAIR LEGEND:

 Requires Structural Repair of Concrete (Depth Equal to or less than 5")

 Requires Epoxy Crack Injection



ELEVATION
(Looking South)



BILL OF MATERIAL - SOUTH ABUT.

BAR	NO.	SIZE	LENGTH	SHAPE
h(E)	2	#4	11'-6"	—
h1(E)	2	#4	14'-8"	—
1(E)	25	#4	2'-9"	—
v(E)	27	#5	3'-4"	—
w(E)	4	#4	11'-6"	—
w1(E)	4	#4	14'-8"	—
Concrete Structures			Cu. Yd.	2.5
Reinforcement Bars, Epoxy Coated			Pound	240
Epoxy Crack Injection			Foot	6

HAMPTON, LENZINI & RENWICK, INC.
CIVIL & STRUCTURAL ENGINEERS
LAND SURVEYORS
3085 STEVENSON DRIVE, SUITE 201
SPRINGFIELD, ILLINOIS 62703
(217) 546-3400

ELGIN • SPRINGFIELD

PROJECT NUMBER: 12-08-0016-1 DATE: 01/18/08
DESIGNED: M.D.C. CHECKED: S.M.S. DRAWN: D.T.M.

SOUTH ABUTMENT
IL. ROUTE 1 OVER HARRIS CREEK
F.A.P. ROUTE 782 / SECTION 115BR-1
HARDIN COUNTY
STATION 927+65
STRUCTURE NO. 035-0001