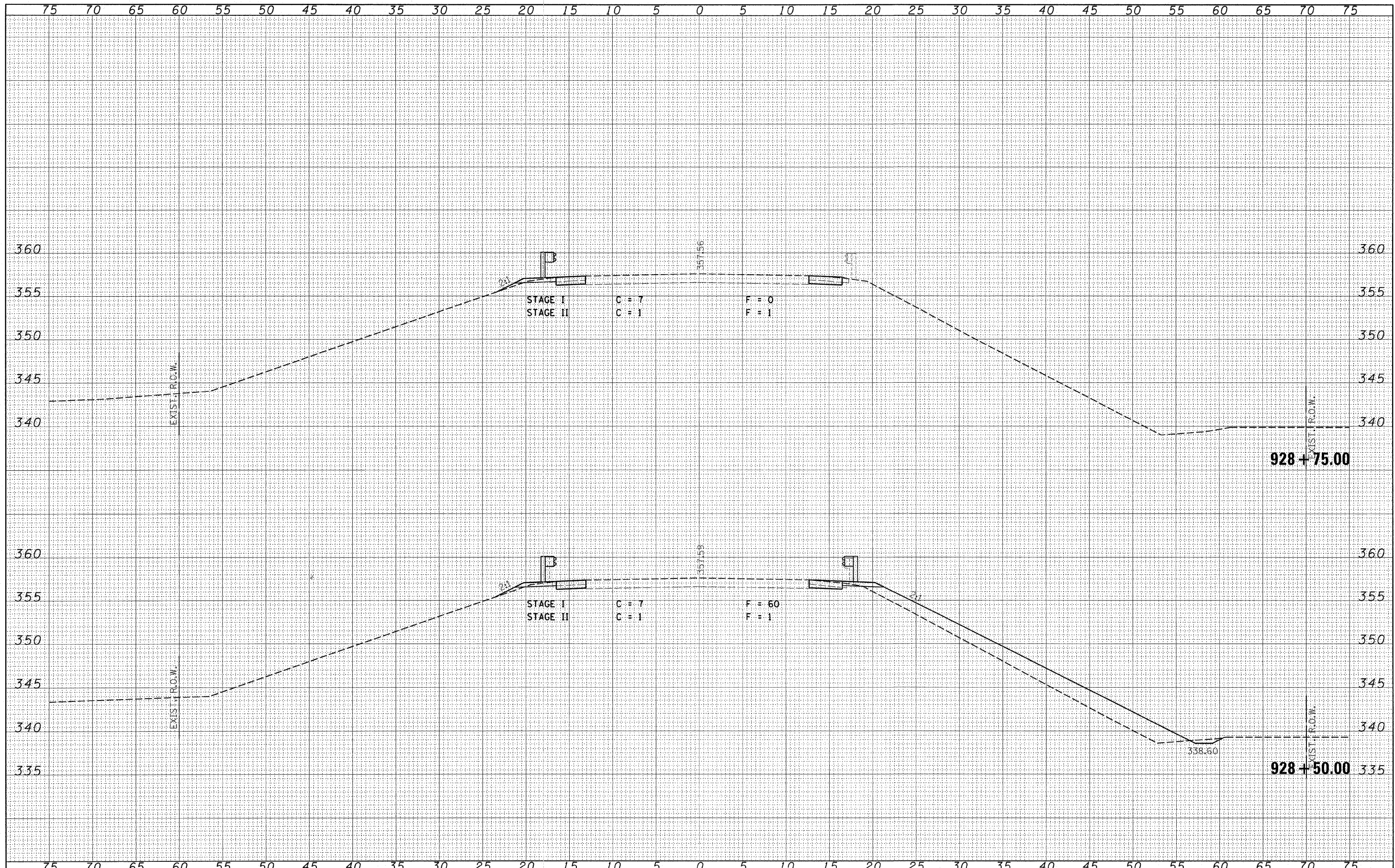


DATE	
BY	
FINAL SURVEY	
PLOTTED	
NOTE BOOK	
AREAS CHECKED	
NO.	

DATE	
BY	
ORIGINAL SURVEY	
PLOTTED	
NOTE BOOK	
AREAS CHECKED	
NO.	



FILE NAME = 0350001-shr-x.s.dgn	USER NAME =	DESIGNED -	REVISED -	<b>STATE OF ILLINOIS DEPARTMENT OF TRANSPORTATION</b>	<b>IL ROUTE 1 - CROSS SECTIONS</b>		F.A.P. RTE. 782	SECTION 1158R-1	COUNTY HARDIN	TOTAL SHEETS 83	SHEET NO. 76	
	PLOT SCALE =	DRAWN -	REVISED -		SCALE:	SHEET NO. OF SHEETS	STA. 928+50.00 TO STA. 928+75.00	FED. ROAD DIST. NO. [ILLINOIS] FED. AID PROJECT				
	PLOT DATE = 1/23/2008	CHECKED -	REVISED -		CONTRACT NO. 78026							
		DATE -	REVISED -									