

STATE OF ILLINOIS
DEPARTMENT OF TRANSPORTATION
DIVISION OF HIGHWAYS

**PROPOSED
HIGHWAY PLANS**

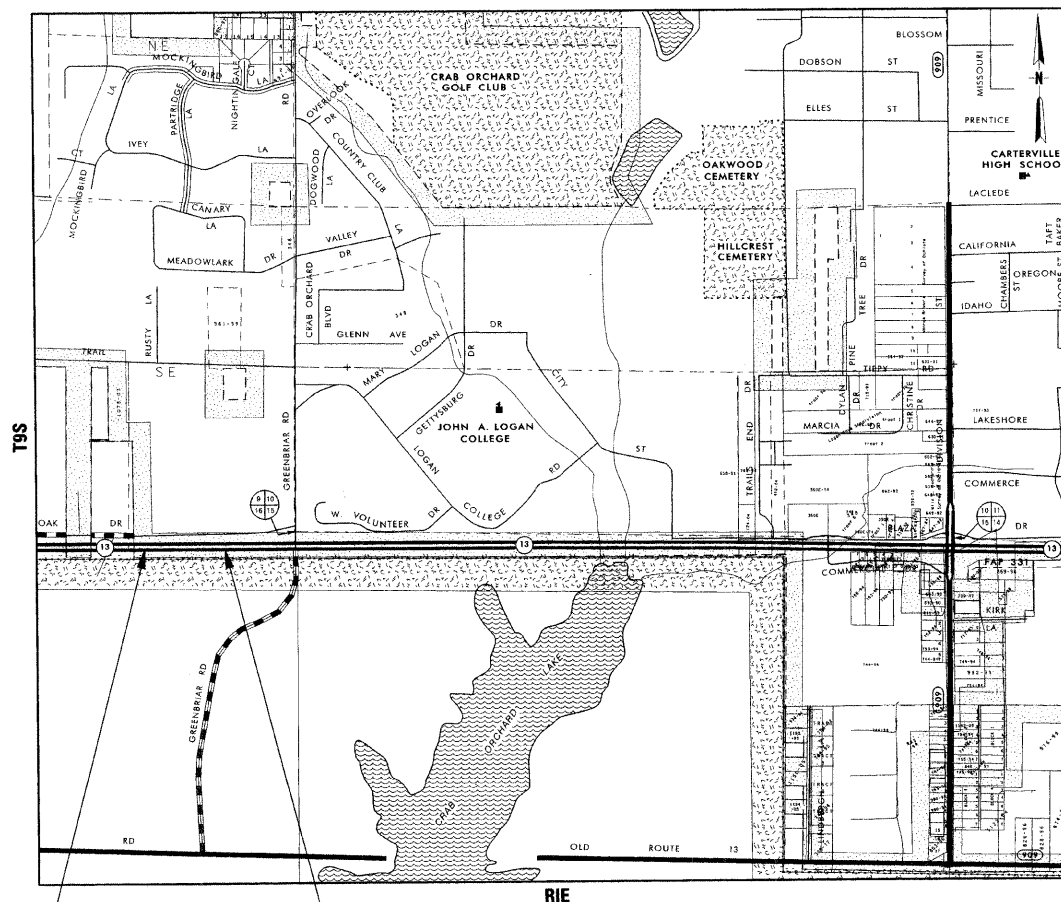
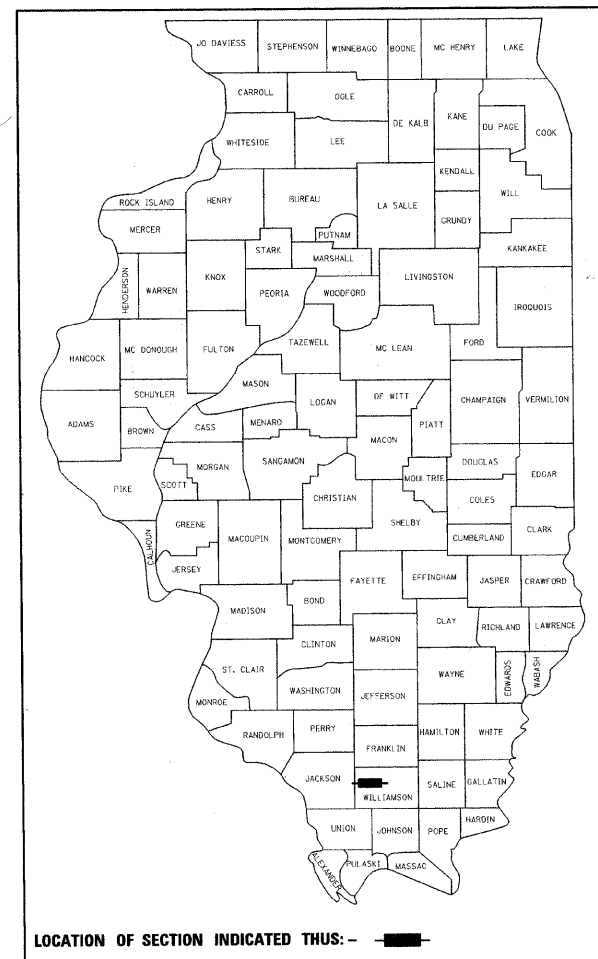
(ROUTE IL 13) FAP 331 &
GREENBRIAR RD. (CS 7060)
SECTION (1-4)N-2
PROJECT # ACHSIP-0331(044)
IL 13 EASTBOUND LEFT TURN LANE EXTENSION
WILLIAMSON COUNTY
C-99-030-08

F.A. RTE.	SECTION	COUNTY	TOTAL SHEETS	SHEET NO.
331	(1-4)N-2	WILLIAMSON	13	1
FED. ROAD DIST. NO.	ILLINOIS	CONTRACT NO. 78047		

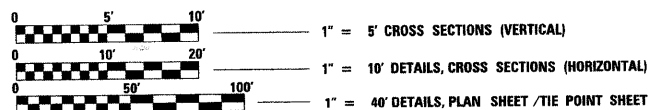
FOR INDEX OF SHEETS, SEE SHEET NO. 2

APPROACH	ADT(2008)	% TRUCKS
IL 13	29,770	2.3%
GREENBRIAR RD.	7,470	0.9%

D-99-020-08



TOWNSHIP: CARTERVILLE



FULL SIZE PLANS HAVE BEEN PREPARED USING STANDARD ENGINEERING SCALES. REDUCED SIZED PLANS WILL NOT CONFORM TO STANDARD SCALES. IN MAKING MEASUREMENTS ON REDUCED PLANS, THE ABOVE SCALES MAY BE USED.

J.U.L.I.E.
JOINT UTILITY LOCATION INFORMATION FOR EXCAVATION
1-800-892-0123
OR 811

PROJECT ENGINEER: SUSAN POE
PROJECT MANAGER: PATRICK NAAS

PROPOSED PROJECT BEGINS
STATION 400 + 15

PROPOSED PROJECT ENDS
STATION 406 + 63

GROSS LENGTH OF PROJECT = 0.123 MILES
NET LENGTH OF PROJECT = 0.123 MILES

CONTRACT NO. 78047

COUNTY: WILLIAMSON SECTION: (1-4)N-2 ROUTE: IL 13 (FAP 331)

STATE OF ILLINOIS
DEPARTMENT OF TRANSPORTATION
DIVISION OF HIGHWAYS

SUBMITTED Jan 28 20 08

Mary C. Lomic
DEPUTY DIRECTOR OF HIGHWAYS, REGION ENGINEER

March 21, 20 08
Eric F. Haral
INTERIM ENGINEER OF DESIGN AND ENVIRONMENT

March 21, 20 08
Christie M. Reed
DIRECTOR OF HIGHWAYS, CHIEF ENGINEER

PRINTED BY THE AUTHORITY
OF THE STATE OF ILLINOIS