

STATE OF ILLINOIS
DEPARTMENT OF TRANSPORTATION
DIVISION OF HIGHWAYS

**PROPOSED
HIGHWAY PLANS**

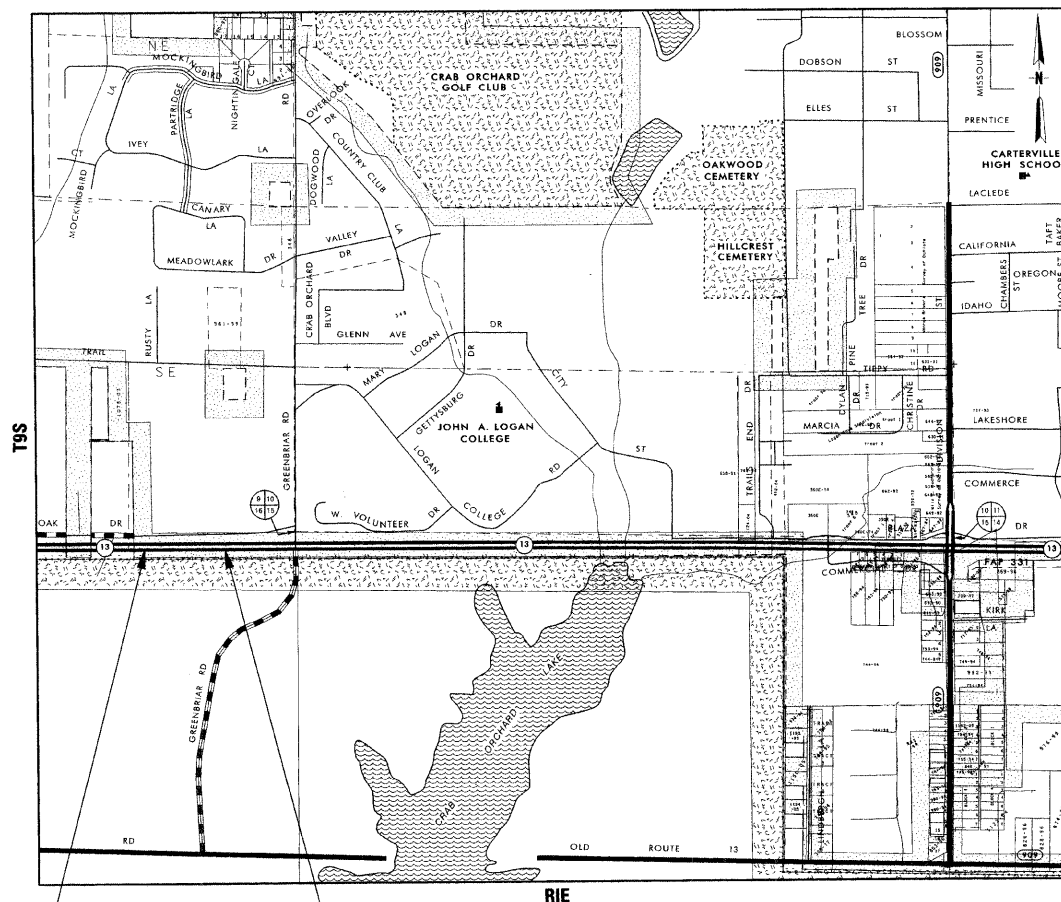
(ROUTE IL 13) FAP 331 &
GREENBRIAR RD. (CS 7060)
SECTION (1-4)N-2
PROJECT # ACHSIP-0331(044)
IL 13 EASTBOUND LEFT TURN LANE EXTENSION
WILLIAMSON COUNTY
C-99-030-08

F.A. RTE.	SECTION	COUNTY	TOTAL SHEETS	SHEET NO.
331	(1-4)N-2	WILLIAMSON	13	1
FED. ROAD DIST. NO.	ILLINOIS	CONTRACT NO. 78047		

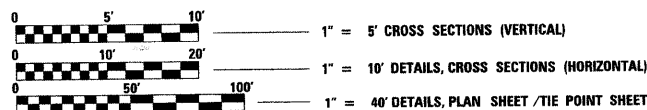
FOR INDEX OF SHEETS, SEE SHEET NO. 2

APPROACH	ADT(2008)	% TRUCKS
IL 13	29,770	2.3%
GREENBRIAR RD.	7,470	0.9%

D-99-020-08



TOWNSHIP: CARTERVILLE



FULL SIZE PLANS HAVE BEEN PREPARED USING STANDARD ENGINEERING SCALES. REDUCED SIZED PLANS WILL NOT CONFORM TO STANDARD SCALES. IN MAKING MEASUREMENTS ON REDUCED PLANS, THE ABOVE SCALES MAY BE USED.

J.U.L.I.E.
JOINT UTILITY LOCATION INFORMATION FOR EXCAVATION
1-800-892-0123
OR 811

PROJECT ENGINEER: SUSAN POE
PROJECT MANAGER: PATRICK NAAS

PROPOSED PROJECT BEGINS
STATION 400 + 15

PROPOSED PROJECT ENDS
STATION 406 + 63

GROSS LENGTH OF PROJECT = 0.123 MILES
NET LENGTH OF PROJECT = 0.123 MILES

CONTRACT NO. 78047

COUNTY: WILLIAMSON SECTION: (1-4)N-2 ROUTE: IL 13 (FAP 331)

STATE OF ILLINOIS
DEPARTMENT OF TRANSPORTATION
DIVISION OF HIGHWAYS

SUBMITTED Jan 28 20 08

Mary C. Lomic
DEPUTY DIRECTOR OF HIGHWAYS, REGION ENGINEER

March 21, 20 08

Eric F. Haral
INTERIM ENGINEER OF DESIGN AND ENVIRONMENT

March 21, 20 08

Christie M. Reed
DIRECTOR OF HIGHWAYS, CHIEF ENGINEER

PRINTED BY THE AUTHORITY
OF THE STATE OF ILLINOIS

GENERAL NOTES

THE THICKNESS OF HOT MIX ASPHALT MIXTURE SHOWN ON THE PLANS IS THE NOMINAL THICKNESS. DEVIATIONS FROM THE NOMINAL THICKNESS WILL BE PERMITTED WHEN SUCH DEVIATIONS OCCUR DUE TO IRREGULARITIES IN THE EXISTING SURFACE OR BASE ON WHICH THE HOT MIX ASPHALT MIXTURE IS PLACED.

FACTORS USED FOR ESTIMATING PLAN QUANTITIES ARE AS FOLLOWS AND SHALL NOT BE USED FOR THE BASIS OF FINAL QUANTITIES:

ALL HOT MIX ASPHALT	(2.016 TONS/CU. YD.)
ALL AGGREGATE	(2.05 TONS/CU. YD.)
BITUMINOUS MATERIALS:	
ON PAVEMENT	(0.09 GAL./SQ. YD.)
INTERMEDIATE LIFTS (FOG COAT)	(0.04 GAL./SQ. YD.)
ON AGGREGATE SURFACE	(0.32 GAL./SQ. YD.)
AGGREGATE (PRIME COAT)	(0.0015 TONS/SQ. YD.)
RIPRAP	(1.50 TONS/CU. YD.)

EARTHWORK COMPACTION SHALL BE TO THE SATISFACTION OF THE ENGINEER.

P. C. C. BASE COURSE SHALL BE PRIMED ACCORDING TO ARTICLE 406.02.

AT ALL LOCATIONS WHERE THE PROPOSED HOT MIX ASPHALT OR CONCRETE PAVEMENT JOINS AN EXISTING HOT MIX ASPHALT OR CONCRETE PAVEMENT, A FULL DEPTH SAWED JOINT SHALL BE CONSTRUCTED. THE COST OF THIS JOINT WILL BE INCLUDED IN THE COST OF THE TYPE OF PAVEMENT BEING CONSTRUCTED.

THE MINIMUM VERTICAL CLEARANCE FOR PERMANENT SIGNS PLACED ON BACKSLOPES SHALL BE 3 FT. MEASURED FROM A POINT DIRECTLY BENEATH THE FAR EDGE OF THE SIGN.

QUANTITIES SHOWN IN THE PLANS FOR PATCHING ARE ESTIMATES. THE ACTUAL AMOUNT OF PATCHING REQUIRED SHALL BE DETERMINED BY THE ENGINEER.

UTILITIES ARE SHOWN IN ACCORDANCE WITH THE BEST AVAILABLE INFORMATION AND THEIR ACTUAL LOCATIONS ARE NOT GUARANTEED TO BE AS SHOWN IN THE PLANS.

AT ALL LOCATIONS WHERE THE PROPOSED BITUMINOUS OR CONCRETE PAVEMENT JOINS AN EXISTING BITUMINOUS OR CONCRETE PAVEMENT, A FULL DEPTH SAWED JOINT SHALL BE CONSTRUCTED. THE COST OF THIS JOINT WILL BE INCLUDED IN THE COST OF THE TYPE OF PAVEMENT BEING CONSTRUCTED.

THE EXISTING ROAD SIGNS THAT INTERFERE WITH CONSTRUCTION WILL BE REMOVED OR RELOCATED AS DIRECTED BY THE ENGINEER ACCORDING TO ARTICLE 107.25 OF THE STANDARD SPECIFICATIONS. AFTER THE CONSTRUCTION IS COMPLETED, THE CONTRACTOR WILL RE-ERECT THE SIGNS AS DIRECTED BY THE ENGINEER. THIS WORK WILL NOT BE PAID FOR SEPARATELY BUT SHALL BE CONSIDERED INCIDENTAL TO THE CONTRACT AND NO COMPENSATION WILL BE ALLOWED.

THE FURNISHING AND INSTALLATION OF THE 3.18 cm (1* IN.) CONDUIT WITH ITS TRENCHING AND BACKFILL FROM THE LOOP SAWCUT TO THE SPLICE POINT SHALL BE INCLUDED IN THE LOOP INSTALLATION UNLESS SHOWN OTHERWISE ON THE PLANS.

THE INDUCTION LOOP WIRE AND LEAD-IN WIRE SHALL BE INSTALLED IN ACCORDANCE WITH THE MANUFACTURER'S RECOMMENDATION.

ALL DETECTOR LOOP CORNERS SHALL BE CORE DRILLED 5.08 cm (2 IN.) MINIMUM DIAMETER EXCEPT THOSE PLACED UNDER RESURFACING. THE DETECTOR LOOP CORNERS PLACED UNDER RESURFACING SHALL BE DIAGONALLY SAWCUT.

EXISTING SURFACE DISTURBED DURING EXCAVATION FOR FOUNDATIONS AND PUSH PITS SHALL BE RESTORED TO THE LIMITS AND CONDITION SPECIFIED BY THE ENGINEER OR AS SHOWN ON THE PLANS, UNLESS NOTED OTHERWISE ON THE PLANS THE REMOVAL AND RESTORATION SHALL BE INCLUDED IN THE CONTRACT.

SAWED SLOTS FOR TWISTED PAIR ELECTRIC CABLES SHALL BE LARGER THAN SINGLE CONDUCTOR LOOP SLOTS.

THE LOCATION OF THE DETECTOR LOOPS AND TRAFFIC SIGNAL FOUNDATIONS, AS SHOWN ON THE PLANS, MAY BE ADJUSTED TO FIT FIELD CONDITIONS AS DIRECTED BY THE ENGINEER OF TRAFFIC OPERATIONS.

THE CONTRACTOR SHALL NOTIFY THE ENGINEER OF TRAFFIC OPERATIONS 72 HOURS PRIOR TO THE SHUT-DOWN OR CUTTING OF EXISTING DETECTOR LOOPS.

THERE ARE NO AVAILABLE WASTE SITES ON THE EXISTING RIGHT OF WAY WITHIN THE PROJECT LIMITS.

THE LIMITS OF EARTH SLOPES SHOWN IN THE CROSS SECTIONS ARE APPROXIMATE. THE ACTUAL SLOPE USED SHALL BE DETERMINED BY THE MATERIAL CLASSIFICATION AS DEFINED IN ARTICLE 202.04, AND AS DIRECTED BY THE ENGINEER.

PRIOR TO PLACEMENT OF THE FINAL PAVEMENT MARKINGS THE RESIDENT ENGINEER SHOULD CONTACT THE BUREAU OF OPERATIONS AND ARRANGE FOR INSPECTION AND APPROVAL OF THE PAVEMENT MARKING LAYOUT

COMMITMENTS: NONE

SHEET # DESCRIPTION

1	COVER SHEET
2	GENERAL NOTES, INDEX OF SHEETS, LIST OF STANDARDS
3	SUMMARY OF QUANTITIES
4	TYPICAL SECTIONS
5	SCHEDULES: EARTHWORK / PAVEMENT MARKING / REMOVAL SEEDING AND EROSION CONTROL / PAVING
6	PLAN SHEET
7	TIE POINT SHEET
8	DETAILS: SEEDING AND MULCHING, TEMPORARY DITCH CHECKS, DETECTOR LOOP DETAIL
9-13	CROSS SECTIONS: IL 13

STANDARDS INDEX

000001-05	STANDARD SYMBOLS, ABBREVIATIONS, AND PATTERNS
001001-01	AREAS OF REINFORCEMENT BARS
001006	DECIMAL OF AN INCH AND OF A FOOT
353001-04	PCC BASE COURSE WITH HMA BINDER AND SURFACE COURSES
420001-07	PAVEMENT JOINTS
420101-04	24' JOINTED PCC PAVEMENT
442101-07	CLASS B PATCHES
482006-03	HMA SHOULDER ADJACENT TO RIGID PAVEMENT
701101-01	OFF-ROAD OPERATIONS, MULTILANE, 15' TO 24" FROM PAVEMENT EDGE
701106-01	OFF-ROAD OPERATIONS, MULTILANE, MORE THAN 15' AWAY
701421-01	LANE CLOSURE, MULTILANE, DAY OPERATIONS ONLY, FOR SPEEDS > 45 MPH TO 55 MPH
701701-05	URBAN LANE CLOSURE, MULTILANE INTERSECTION
780001-01	TYPICAL PAVEMENT MARKINGS
857001	STANDARD PHASE DESIGNATION DIAGRAMS AND PHASE SEQUENCES
886001	DETECTOR LOOP INSTALLATIONS
886006	TYPICAL LAYOUTS FOR DETECTION LOOPS
701901	

Prepared By:	<i>Joe Zdaniewicz</i> DISTRICT STUDIES & PLANS ENGINEER
Examined By:	<i>James Travis Emery</i> DISTRICT LAND ACQUISITION ENGINEER
Examined By:	<i>Cecilia Nelson</i> DISTRICT PROGRAM DEVELOPMENT ENGINEER
Examined By:	<i>Kevin Grammer</i> DISTRICT OPERATIONS ENGINEER
Examined By:	<i>Joseph Lewis</i> DISTRICT CONSTRUCTION ENGINEER
Examined By:	<i>Bruce Parble</i> DISTRICT MATERIALS ENGINEER
Examined By:	<i>Jim Smithers</i> DISTRICT PROJECT IMPLEMENTATION ENGINEER
Examined By:	<i>James L. Denton</i> ASSISTANT REGIONAL ENGINEER
Approved By:	<i>Wayne C. Almie</i> DEPUTY DIRECTOR OF HIGHWAYS, REGION ENGINEER
DATE	JUN 28 20 00

FILE NAME :	USER NAME :	DESIGNED :	REVISED :	STATE OF ILLINOIS DEPARTMENT OF TRANSPORTATION	GENERAL NOTES, INDEX OF SHEETS, LIST OF STANDARDS	F.A. RTE.	SECTION	COUNTY	TOTAL SHEETS	SHEET NO.	
a:\projects\78047\78047-shr-sch.dgn	poosl	DRAWN :	REVISED :			331	(1-4)N-2	WILLIAMSON	13	2	
		CHECKED :	REVISED :			SCALE:	SHEET NO. OF SHEETS	STA. TO STA.	FED. ROAD DIST. NO. ILLINOIS FED. AID PROJECT		
		DATE :	REVISED :			CONTRACT NO. 78047					

SUMMARY OF QUANTITIES

CODE NO.	ITEM	CONSTRUCTION TYPE CODE	
		UNIT	TOTAL QUANTITIES 90 % FED 10 % STATE
20101400	NITROGEN FERTILIZER NUTRIENT	POUND	23
20101500	PHOSPHORUS FERTILIZER NUTRIENT	POUND	18
20101600	POTASSIUM FERTILIZER NUTRIENT	POUND	18
20200100	EARTH EXCAVATION	CU YD	91
20400800	FURNISHED EXCAVATION	CU YD	135
25000115	SEEDING, CLASS 1B	ACRE	0.25
25000350	SEEDING, CLASS 7	ACRE	0.25
25000700	AGRICULTURAL GROUND LIMESTONE	TON	0.3
25100115	MULCH, METHOD 2	ACRE	0.5
25100630	EROSION CONTROL BLANKET	SQ YD	706
28000300	TEMPORARY DITCH CHECKS	EACH	3
31100300	SUB-BASE GRANULAR MATERIAL, TYPE A 4"	SQ YD	804
35300300	PORTLAND CEMENT CONCRETE BASE COURSE 8"	SQ YD	707
40600115	POLYMERIZED BITUMINOUS MATERIALS (PRIME COAT)	GALLON	64
40603245	POLYMERIZED HOT-MIX ASPHALT BINDER COURSE, IL-19.0, N105	TON	89
40603575	POLYMERIZED HOT-MIX ASPHALT SURFACE COURSE, MIX "E", N105	TON	59
42001200	PAVEMENT FABRIC	SQ YD	21
44000100	PAVEMENT REMOVAL	SQ YD	242
44004250	PAVED SHOULDER REMOVAL	SQ YD	294
44200942	CLASS B PATCHES, TYPE III, 8 INCH	SQ YD	21
44213200	SAW CUTS	FOOT	84
48203029	HOT-MIX ASPHALT SHOULDERS, 8"	SQ YD	289
67100100	MOBILIZATION	L SUM	1
70100310	TRAFFIC CONTROL AND PROTECTION, STANDARD 701421	L SUM	1
70102635	TRAFFIC CONTROL AND PROTECTION, STANDARD 701701	L SUM	1
70103815	TRAFFIC CONTROL SURVEILLANCE	CAL DA	5
70300210	TEMPORARY PAVEMENT MARKING - LETTERS AND SYMBOLS	SQ FT	21
70300220	TEMPORARY PAVEMENT MARKING - LINE 4"	FOOT	883
70300280	TEMPORARY PAVEMENT MARKING - LINE 24"	FOOT	12
70301000	WORK ZONE PAVEMENT MARKING REMOVAL	SQ FT	339
* 78000100	THERMOPLASTIC PAVEMENT MARKING-LETTERS AND SYMBOLS	SQ FT	21
* 78000200	THERMOPLASTIC PAVEMENT MARKING-LINE 4"	FOOT	883
* 78000650	THERMOPLASTIC PAVEMENT MARKING-LINE 24"	FOOT	12
78300105	PAVEMENT MARKING REMOVAL	FOOT	336
* 88600100	DETECTOR LOOP, TYPE I	FOOT	80
X7015000	CHANGEABLE MESSAGE SIGN	CAL MO	1
Z0017100	DOWEL BARS	EACH	20

*SPECIALTY ITEMS

EARTHWORK SCHEDULE

LOCATION STATION TO STATION	EARTH EXCAVATION	EARTH EXCAVATION ADJUSTED FOR SHRINKAGE	EMBANKMENT	EARTHWORK BALANCE WASTE(+) OR SHORTAGE(-)
IL 13 EAST BOUND	CU YD	CU YD	CU YD	CU YD
400+15 TO 406+63	91	68	203	-135
TOTALS	91			-135

25% SHRINKAGE FOR EARTH EXCAVATION

PAVEMENT MARKING

LOCATION STATION TO STATION	THERMOPLASTIC PAVEMENT MARKING LINE - 4"		THERMOPLASTIC PAVEMENT MARKING LINE - 24"	THERMOPLASTIC PAVEMENT MARKING LETTERS & SYMBOLS
	SOLID YELLOW	SOLID WHITE		
IL 13 EAST BOUND	(FOOT)	(FOOT)	(FOOT)	(SQ FT)
400+85.36 TO 406+63 (OUTSIDE EDGE OF L. T. L.)	578			
403+50 TO 406+55 (INSIDE EDGE OF L. T. L.)		305		
403+64 (ONLY)				11.8
404+21 (ARROW)				8.8
AT GREENBRIAR PATCH			12	
SUBTOTALS	578	305		
TOTALS		883	12	20.6

SEEDING AND EROSION CONTROL

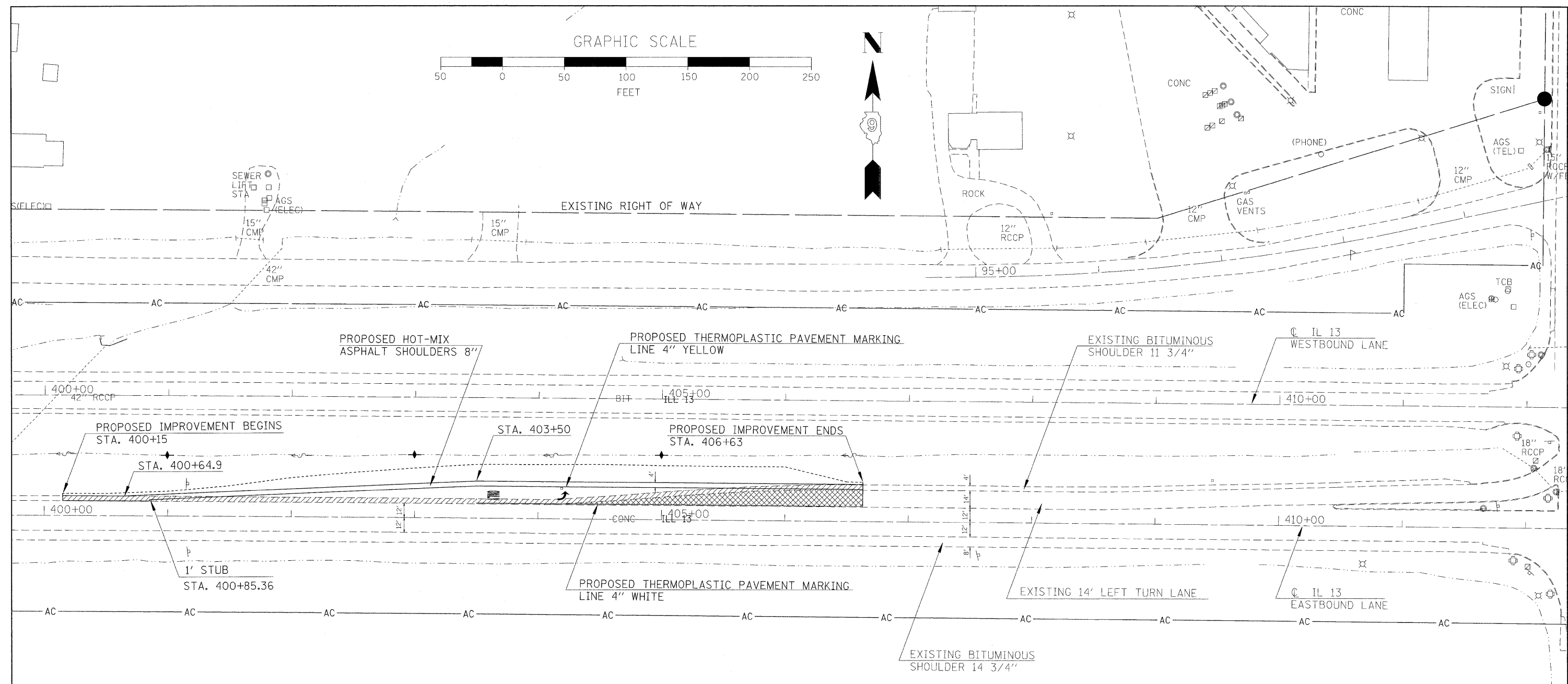
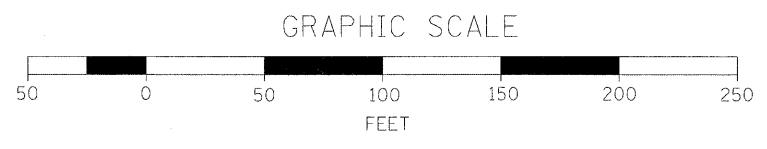
LOCATION STATION TO STATION	SEEDING CLASS 1B	NITROGEN FERTILIZER NUTRIENT	PHOSPHORUS FERTILIZER NUTRIENT	POTASSIUM FERTILIZER NUTRIENT	MULCH METHOD 2	AGRICULTURAL GROUND LIMESTONE	EROSION CONTROL BLANKET	SEEDING CLASS 7	TEMPORARY DITCH CHECKS
IL 13 EAST BOUND	ACRE	POUND	POUND	POUND	ACRE	TON	SQ YD	ACRE	EACH
400+15 TO 406+63	0.25	23	18	18	0.5	0.3	706	0.25	
401+00									1
403+00									1
405+00									1
TOTALS	0.25	23	18	18	0.5	0.3	706	0.25	3

REMOVAL SCHEDULE

LOCATION STATION TO STATION	PAVEMENT REMOVAL	PAVED SHOULDER REMOVAL	PAVEMENT MARKING REMOVAL
IL 13 EAST BOUND	SQ YD	SQ YD	FOOT
400+15 TO 406+63 LT		294	
400+85 TO 404+21 LT			336
404+21 TO 406+63 LT	242		
TOTALS	242	294	336

PAVING SCHEDULE

LOCATION STATION TO STATION	HOT-MIX ASPHALT SHOULDERS 8"	SUB-BASE GRANULAR MATERIAL TYPE A, 4"	PCC BASE COURSE 8"	POLYMERIZED HOT-MIX ASPHALT BINDER COURSE IL-19.0, N105	POLYMERIZED HOT-MIX ASPHALT SURFACE COURSE MIX "E", N105	POLYMERIZED BITUMINOUS MATERIALS (PRIME COAT)
IL 13 EAST BOUND	SQ YD	SQ YD	SQ YD	TON	TON	GALLON
400+15 TO 406+63 LT.	289					
400+85.36 TO 406+63 LT.		804	707	89	59	64
TOTALS	289	804	707	89	59	64



PROPOSED EDGE OF PAVEMENT OFFSETS
ALONG PROPOSED LEFT TURN LANE

STATION EASTBOUND LANE	PROPOSED E. O. P. OFFSET
400+15	12.00 LT
400+50	12.00 LT
401+00	13.72 LT
401+50	16.17 LT
402+00	18.63 LT
402+50	21.09 LT
403+00	23.54 LT
403+50	26.00 LT
404+00	26.00 LT
404+50	26.00 LT
405+00	26.00 LT
405+50	26.00 LT
406+00	26.00 LT
406+50	26.00 LT
406+63	26.00 LT

LEGEND

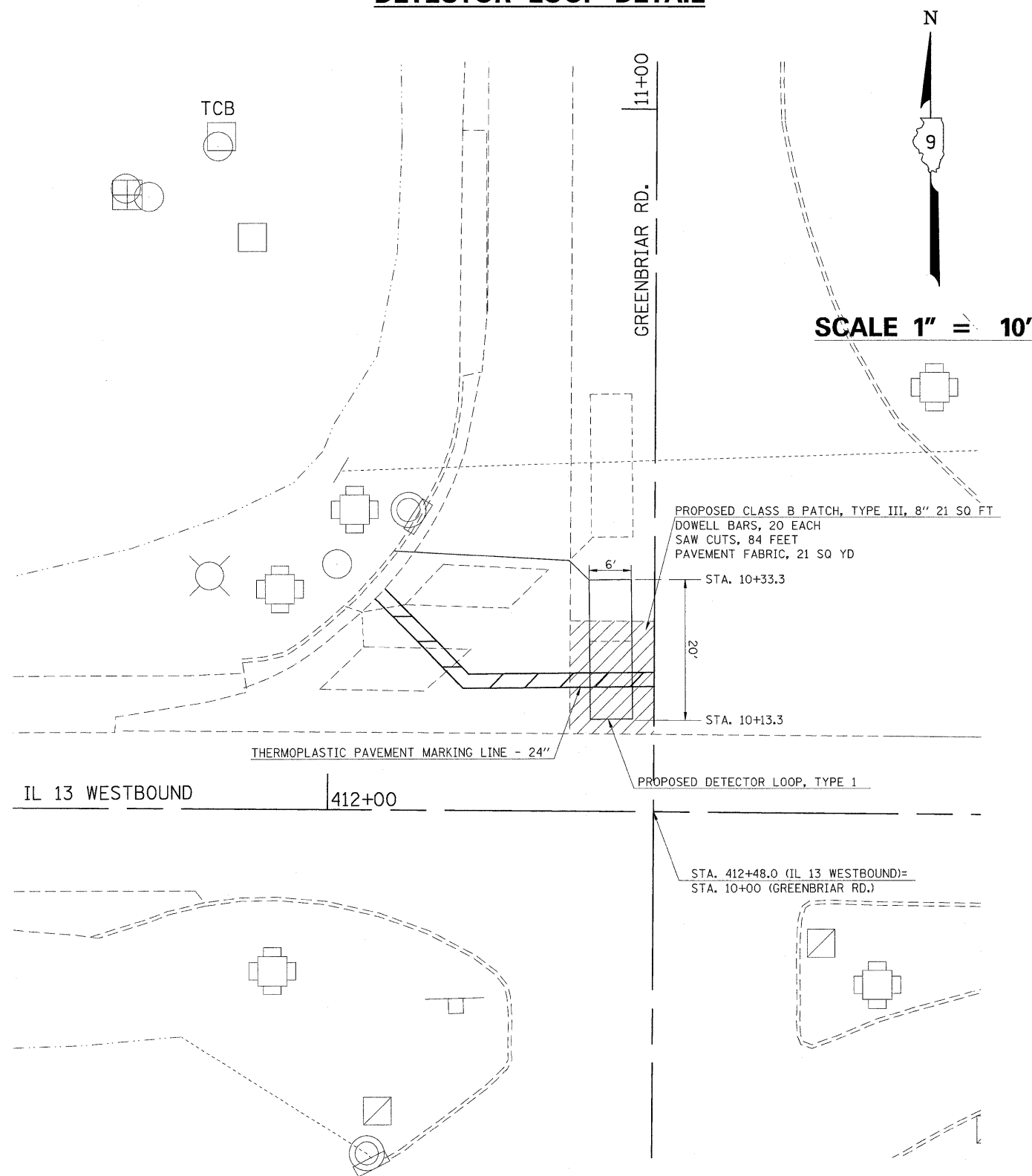
PAVED SHOULDER REMOVAL

PAVEMENT REMOVAL

TEMPORARY DITCH CHECK

NOTE: 1. PLACE EROSION CONTROL BLANKET ON ALL DISTURBED AREAS.
2. FOR BENCHMARK INFORMATION SEE SHEET 7.

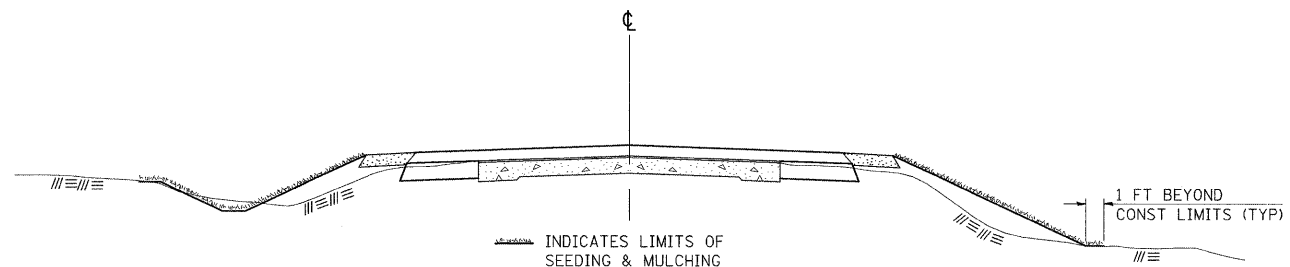
DETECTOR LOOP DETAIL



NOTES

1. PLACE DETECTOR LOOP IN SAME SAWSLOT AS EXISTING.
2. AVOID WIRE FOR RT. TURN LOOP.
3. RUN WIRE INTO HANDHOLE THROUGH EXISTING CONDUIT.

SEEDING & MULCHING



GENERAL NOTES

IN GENERAL, ALL EARTH SURFACES DISTURBED DURING CONSTRUCTION OPERATIONS SHALL BE SEEDDED AND MULCHED UPON COMPLETION OF ALL GRADING OPERATIONS.

FERTILIZER NUTRIENTS AND LIMESTONE SHALL BE APPLIED TO ALL SEEDDED AREAS.

THE RATES OF APPLICATION OF FERTILIZER, MULCH AND LIMESTONE SHALL BE AS SPECIFIED IN THE SPECIAL PROVISIONS.

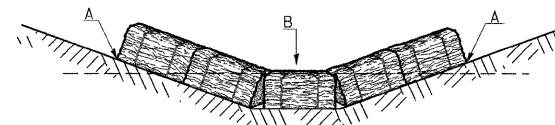
SECTIONS 250 AND 251 OF THE STANDARD SPECIFICATIONS SHALL GOVERN THIS WORK EXCEPT AS SPECIFIED HEREIN OR AS NOTED IN THE SPECIAL PROVISIONS.

REVISIONS	
REDRAWN	2-15-89
REVISED	8-15-94
REVISED	6-3-99

STD. 9-12

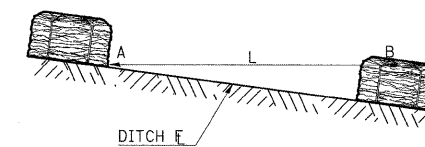
TEMPORARY DITCH CHECKS

PLACEMENT OF TEMPORARY STRAW BALE DITCH CHECK IN DRAINAGEWAY



POINTS A SHOULD BE HIGHER THAN POINT B

SPACING BETWEEN TEMPORARY DITCH CHECKS



L = THE DISTANCE SUCH THAT POINTS A AND B ARE OF EQUAL ELEVATION

B = THE LOW POINT IN CENTER OF CHECK

REVISIONS	
DRAWN	9-01-99
REVISED	10-3-01
REVISED	

STD. 9-108

FILE NAME =	USER NAME = poesi	DESIGNED -	REVISED -
c:\projects\78047\78047-sht-det.dgn		DRAWN -	REVISED -
		CHECKED -	REVISED -
		DATE -	REVISED -

STATE OF ILLINOIS
DEPARTMENT OF TRANSPORTATION

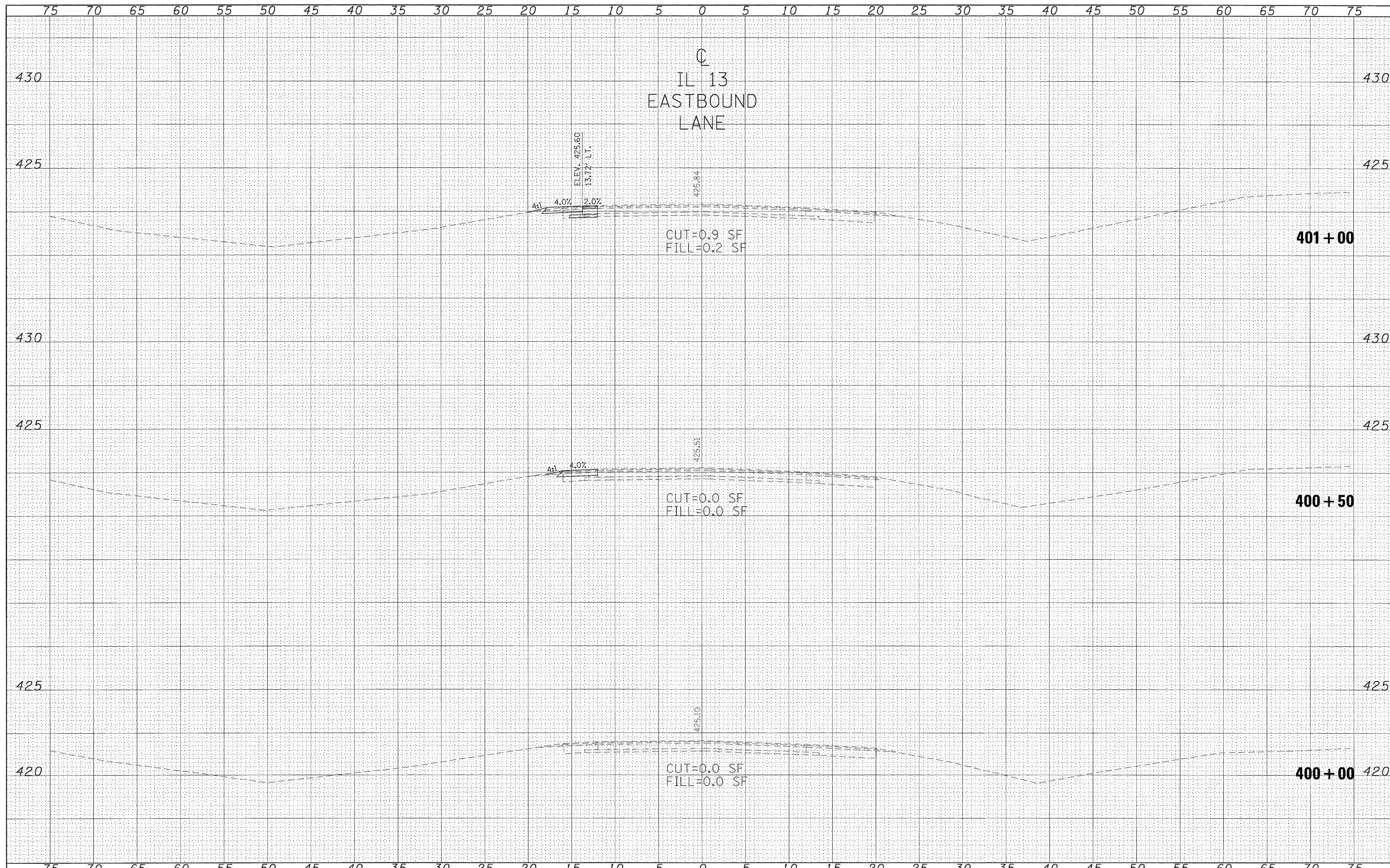
DETAILS: SEEDING AND MULCHING,
TEMP DITCH CHECKS, DETECTOR LOOPS

SCALE: SHEET NO. OF SHEETS STA. TO STA.

F.A. RTE.	SECTION	COUNTY	TOTAL SHEETS	SHEET NO.
331	(1-4)N-2	WILLIAMSON	13	8
FED. ROAD DIST. NO. ILLINOIS FED. AID PROJECT			CONTRACT NO. 78047	

DATE	
BY	
FINAL SURVEY	
SURVEYED	
PLOTTED	
NOTE BOOK	
AREAS CHECKED	
NO.	

DATE	
BY	
ORIGINAL SURVEY	
SURVEYED	
PLOTTED	
NOTE BOOK	
AREAS CHECKED	
NO.	



FILE NAME = c:\projects\78047\78047-sh1-xs.dgn

USER NAME = pcesl	DESIGNED -	REVISED -
PLOT SCALE = 5.0000' / IN.	DRAWN -	REVISED -
PLOT DATE = 1/29/2008	CHECKED -	REVISED -
	DATE -	REVISED -

**STATE OF ILLINOIS
DEPARTMENT OF TRANSPORTATION**

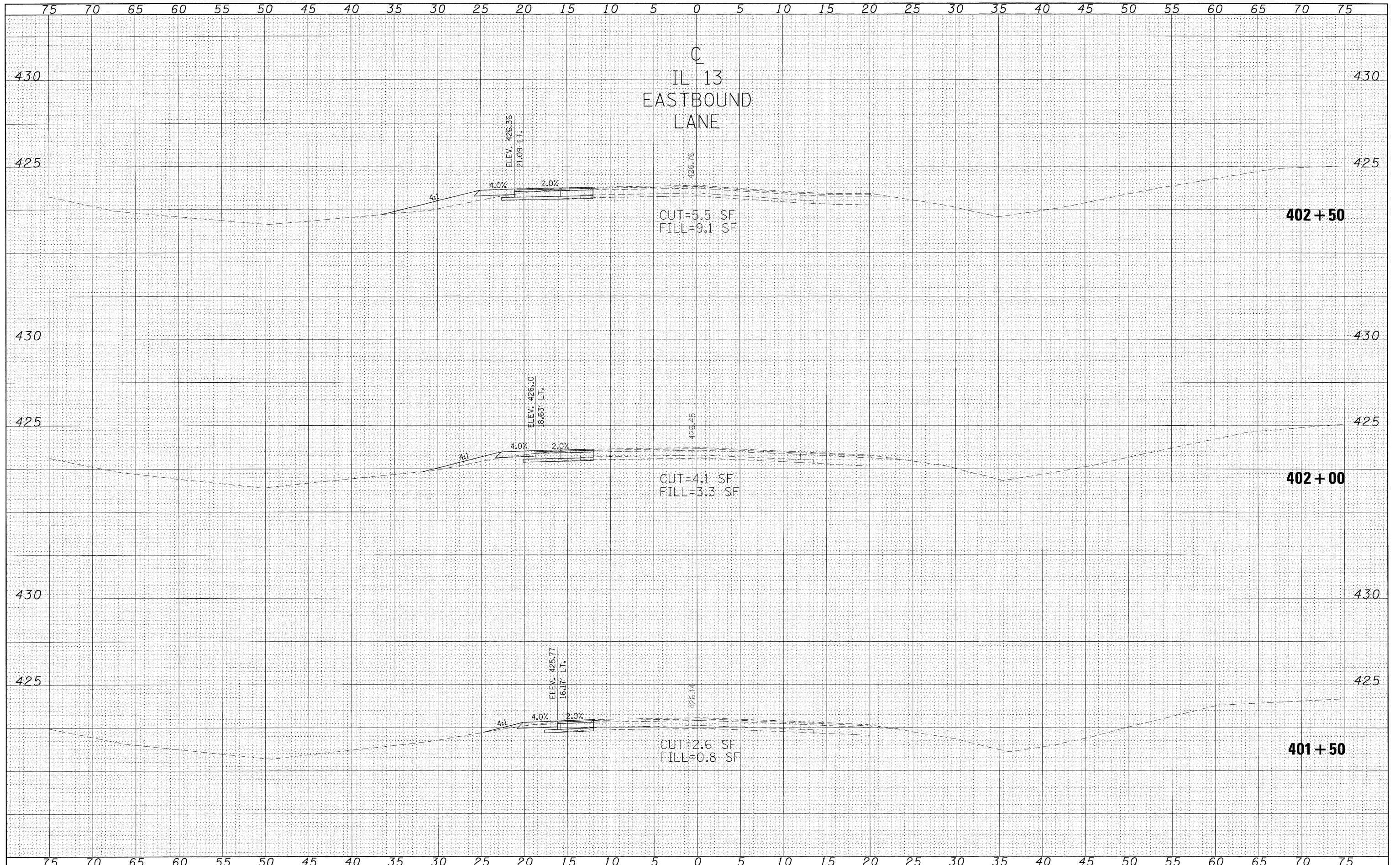
**CROSS SECTIONS: IL 13
STA 400+00 TO STA 401+00**

SCALE: SHEET NO. OF SHEETS STA. 400+00.00 TO STA. 401+00.00

F.A. RTE. 331	SECTION (1-4)N-2	COUNTY WILLIAMSON	TOTAL SHEETS 13	SHEET NO. 9
CONTRACT NO. 78047			ILLINOIS FED. AID PROJECT	

DATE	BY
SURVEYED	PLOTTED
NOTE BOOK	AREAS CHECKED
NO.	

DATE	BY
SURVEYED	PLOTTED
NOTE BOOK	AREAS CHECKED
NO.	



FILE NAME = c:\projects\78047\78047-sh1-x.s.dgn

USER NAME = poesi	DESIGNED -	REVISED -
PLOT SCALE = 5,0000' / IN.	DRAWN -	REVISED -
PLOT DATE = 1/29/2008	CHECKED -	REVISED -
	DATE -	REVISED -

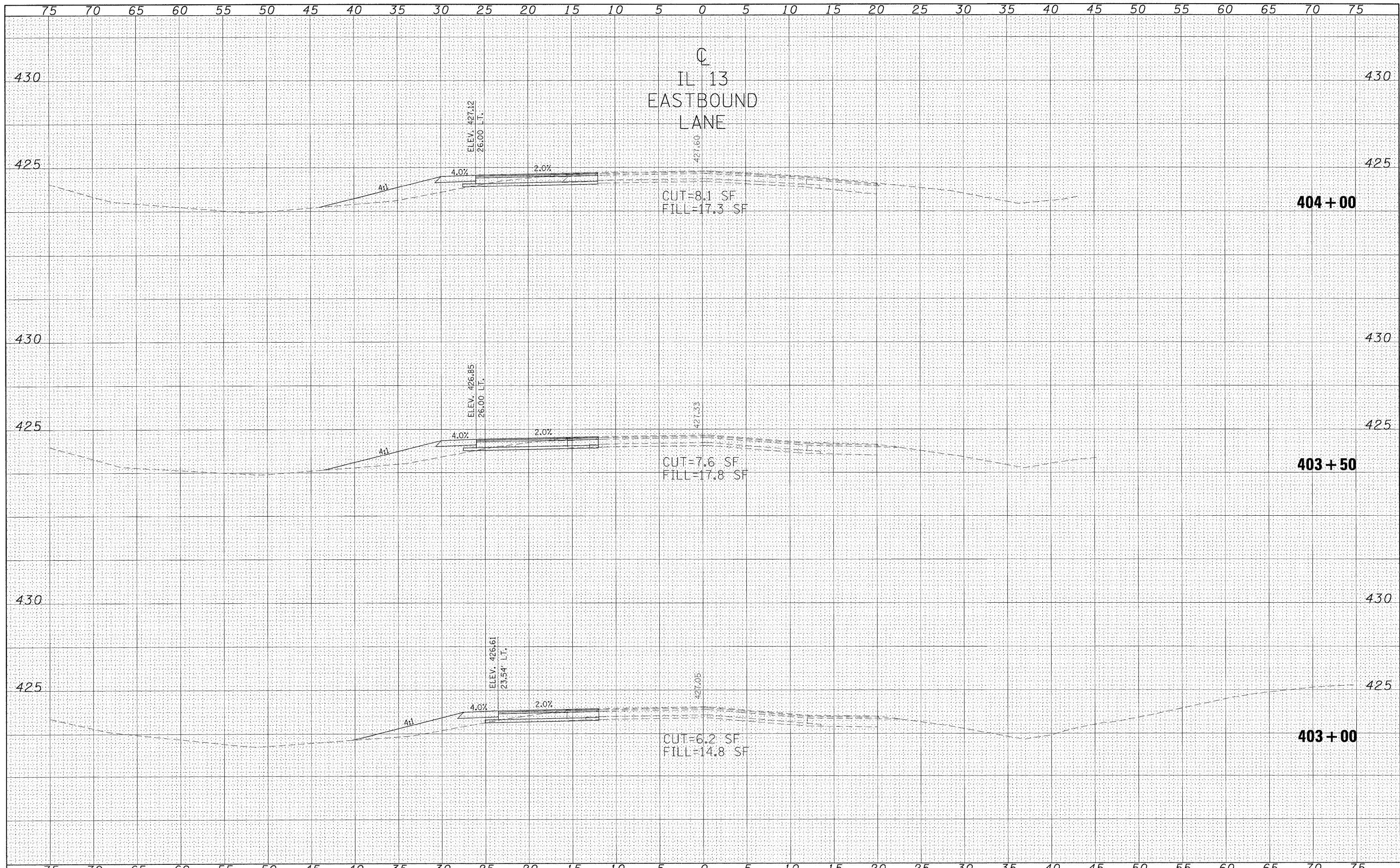
**STATE OF ILLINOIS
DEPARTMENT OF TRANSPORTATION**

CROSS SECTIONS: IL 13			
STA 401+50 TO STA 402+50			
SCALE:	SHEET NO.	OF SHEETS	STA. 401+50.00 TO STA. 402+50.00

F.A. RTE. 331	SECTION (1-4)N-2	COUNTY WILLIAMSON	TOTAL SHEETS 13	SHEET NO. 10
CONTRACT NO. 78047			ILLINOIS FED. AID PROJECT	

FINAL SURVEY PLOTTED DATE: _____ BY: _____
 SURVEYED PLOTTED DATE: _____ BY: _____
 NOTE BOOK NO. _____ AREAS CHECKED: _____

ORIGINAL SURVEY PLOTTED DATE: _____ BY: _____
 SURVEYED PLOTTED DATE: _____ BY: _____
 NOTE BOOK NO. _____ AREAS CHECKED: _____



FILE NAME = c:\projects\78047\78047-sht-xs.dgn
 USER NAME = poosl

DESIGNED -	REVISED -
DRAWN -	REVISED -
CHECKED -	REVISED -
DATE -	REVISED -

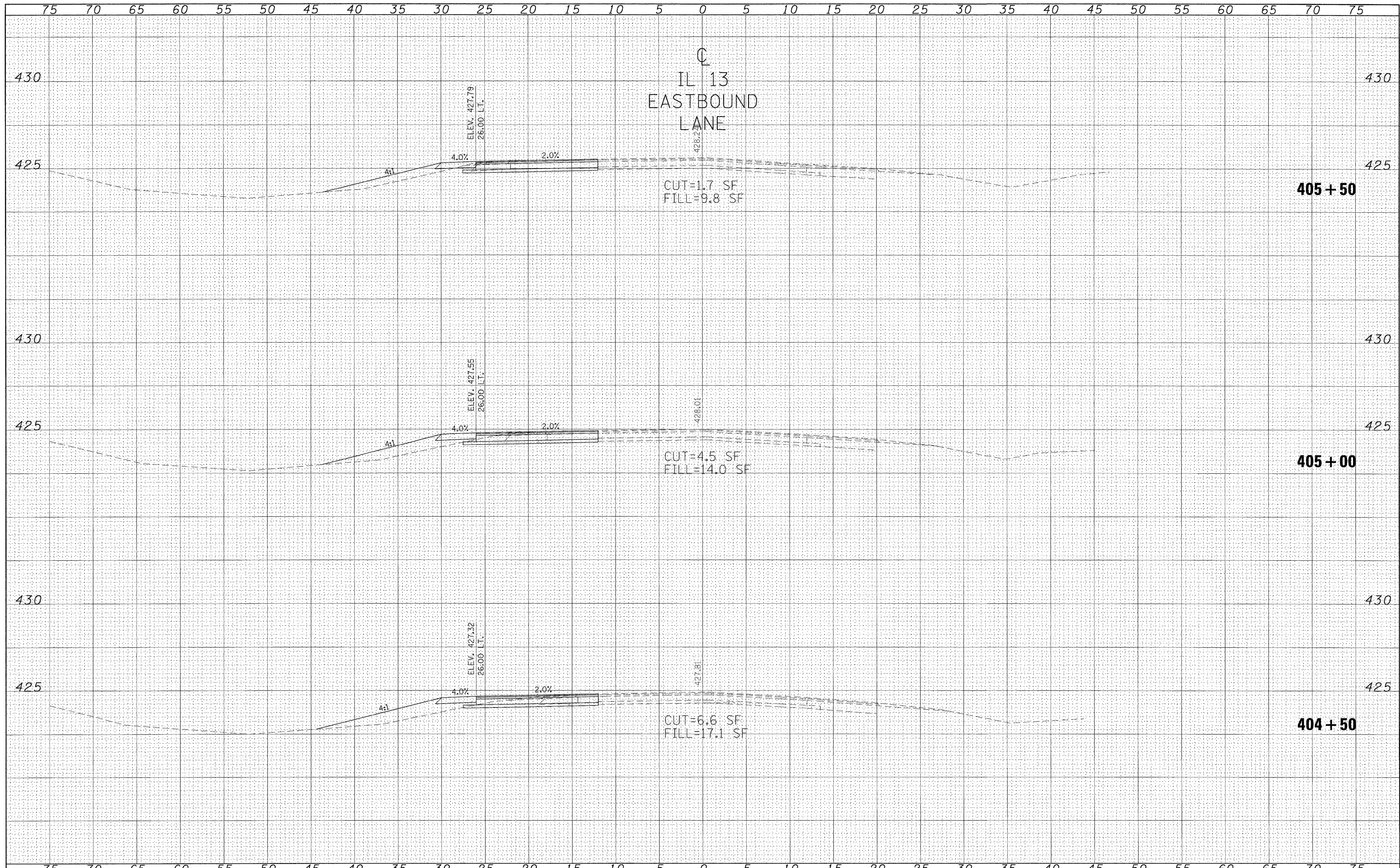
**STATE OF ILLINOIS
 DEPARTMENT OF TRANSPORTATION**

**CROSS SECTIONS: IL 13
 STA 403+00 TO STA 404+00**

F.A. RTE.	SECTION	COUNTY	TOTAL SHEETS	SHEET NO.
331	(1-4)N-2	WILLIAMSON	13	11
CONTRACT NO. 78047				
SCALE:		SHEET NO. OF SHEETS	STA. 403+00.00 TO STA. 404+00.00	
FED. ROAD DIST. NO.		ILLINOIS FED. AID PROJECT		

DATE _____ BY _____
 SURVEYED _____
 PLOTTED _____
 NOTE BOOK _____
 AREAS CHECKED _____
 NO. _____

DATE _____ BY _____
 SURVEYED _____
 PLOTTED _____
 NOTE BOOK _____
 AREAS CHECKED _____
 NO. _____



FILE NAME = c:\projects\78047\78047-sht-xs.dgn
 USER NAME = poasi

DESIGNED -	REVISED -
DRAWN -	REVISED -
CHECKED -	REVISED -
DATE -	REVISED -

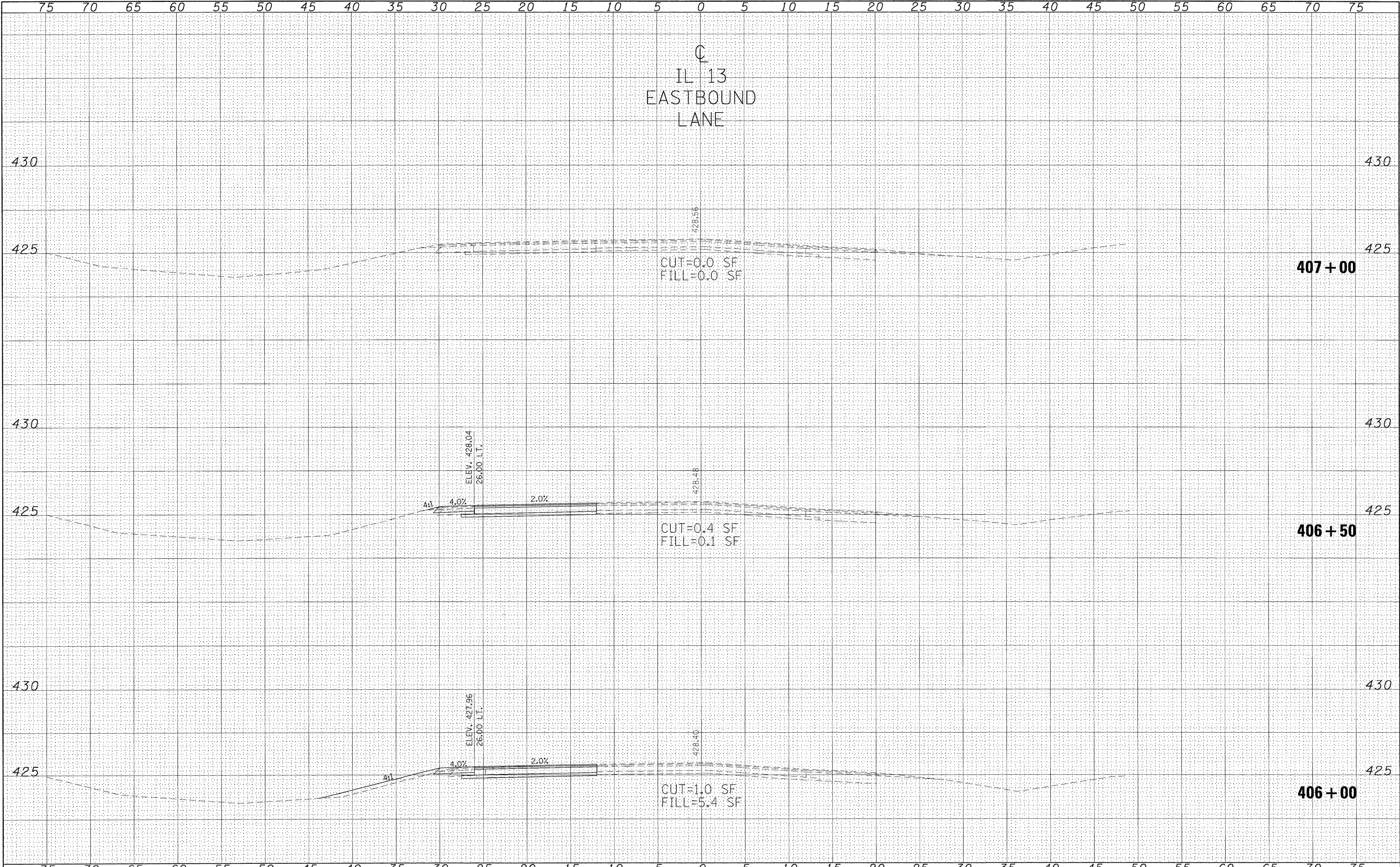
**STATE OF ILLINOIS
 DEPARTMENT OF TRANSPORTATION**

**CROSS SECTIONS: IL 13
 STA 404+50 TO STA 405+50**

SCALE: SHEET NO. OF SHEETS STA. 404+50.00 TO STA. 405+50.00

F.A. RTE. 331	SECTION (1-4)N-2	COUNTY WILLIAMSON	TOTAL SHEETS 13	SHEET NO. 12
FED. ROAD DIST. NO. ILLINOIS FED. AID PROJECT			CONTRACT NO. 78047	

IL 13
EASTBOUND
LANE



FINAL SURVEY	BY	DATE
PLOTTED		
NOTE BOOK		
AREAS CHECKED		
NO.		

ORIGINAL SURVEY	BY	DATE
PLOTTED		
NOTE BOOK		
AREAS CHECKED		
NO.		

FILE NAME =
c:\p\projects\78047\78047-sh1-x.s.dgn

USER NAME = poesi
DESIGNED -
DRAWN -
PLOT SCALE = 5.0000" / IN.
PLOT DATE = 1/29/2008

REVISOR -
CHECKED -
DATE -

REVISED -
REVISED -
REVISED -

STATE OF ILLINOIS
DEPARTMENT OF TRANSPORTATION

CROSS SECTIONS: IL 13
STA 406+00 TO STA 407+00

SCALE: SHEET NO. OF SHEETS STA. 406+00.00 TO STA. 407+00.00

F.A. RTE.	SECTION	COUNTY	TOTAL SHEETS	SHEET NO.
331	(1-4)N-2	WILLIAMSON	13	13
CONTRACT NO.			78047	
FED. ROAD DIST. NO. [ILLINOIS] FED. AID PROJECT				