

INDEX OF SHEETS

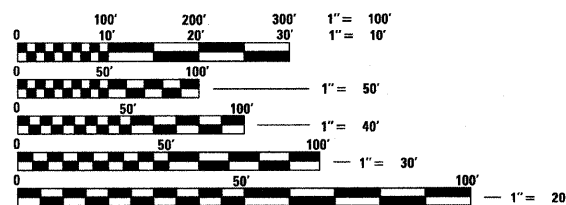
FOR INDEX OF SHEETS, SEE SHEET NO. 2

PROJECT LOCATED IN VILLAGE OF WILMETTE

DESIGN DESIGNATION

	ADT (2008)	POSTED SPEED MPH	DESIGN SPEED MPH
GREEN BAY ROAD (MINOR ARTERIAL)	18,000	30	35
WILMETTE AVENUE (URBAN COLLECTOR)	8,500	30	30
CENTRAL AVENUE (URBAN LOCAL ST.)	7,100	30	30
LAKE AVENUE (MINOR ARTERIAL)	17,600	30	30

ASSOCIATE FIELD ENGINEER: KEVIN STALLWORTH (847) 705-4169
CONSULTANT SERVICES ENGINEER: ALLAN BOLCHAZY, P.E. (312) 777-2900

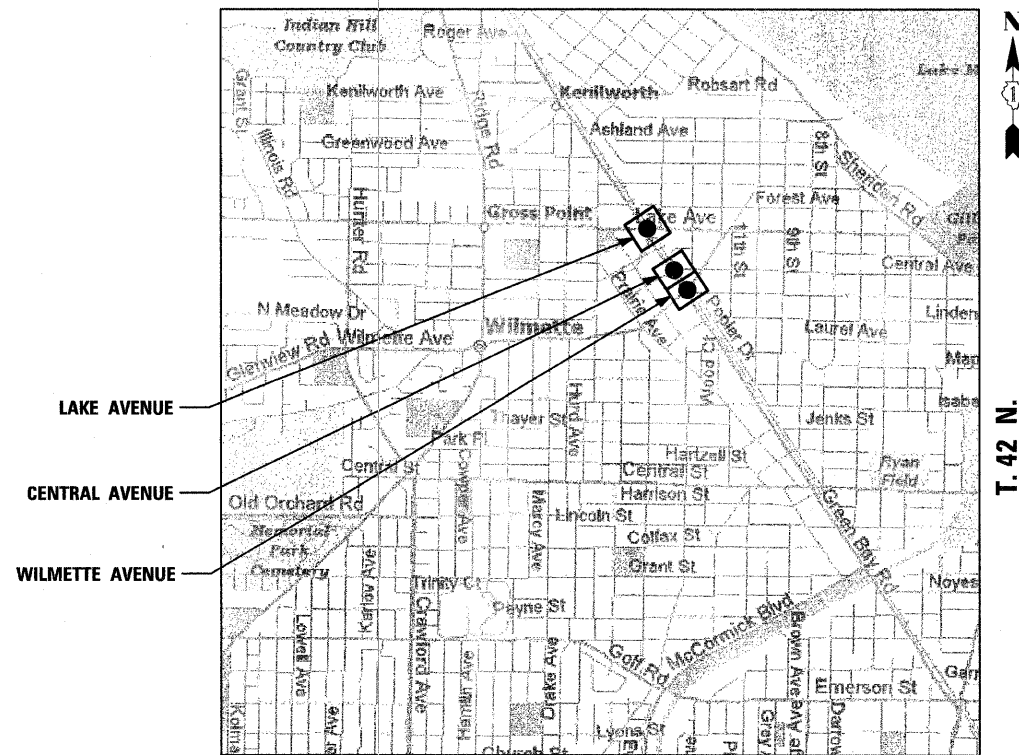


FULL SIZE PLANS HAVE BEEN PREPARED USING STANDARD ENGINEERING SCALES, REDUCED SIZED PLANS WILL NOT CONFORM TO STANDARD SCALES. IN MAKING MEASUREMENTS ON REDUCED PLANS, THE ABOVE SCALES MAY BE USED.

J.U.L.I.E.
JOINT UTILITY LOCATION INFORMATION FOR EXCAVATION
1-800-892-0123

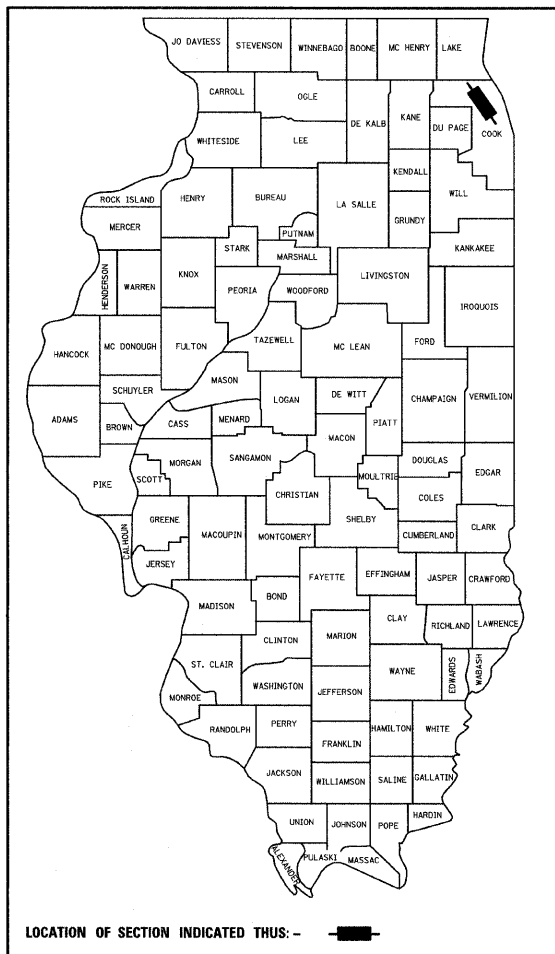
CONTRACT NO. 83999

STATE OF ILLINOIS
DEPARTMENT OF TRANSPORTATION
DIVISION OF HIGHWAYS
**PLANS FOR PROPOSED
FEDERAL AID HIGHWAY
LOCAL AGENCY IMPROVEMENT**
FAU ROUTE 2744 (GREEN BAY ROAD)
INTERSECTIONS WITH WILMETTE, CENTRAL AND LAKE AVENUES
VILLAGE OF WILMETTE
SECTION 06-00183-00-CH
PROJECT NO.: CMM-8003 (778)
WIDENING, RESURFACING AND TRAFFIC SIGNAL IMPROVEMENTS
COOK COUNTY
JOB NO: C-91-179-07
R. 13 E.



NOT TO SCALE
TOWNSHIP
GROSS LENGTH OF PROJECT = 1900 FT. = 0.36 MI.
NET LENGTH OF PROJECT = 1681 FT. = 0.32 MI.

F.A.U. RTE.	SECTION	COUNTY	TOTAL SHEETS	SHEET NO.
2744	06-00183-00-CH	COOK	73	1
FED. ROAD DIST. NO.	ILLINOIS FED. AID PROJECT		CONTRACT NO. 83999	

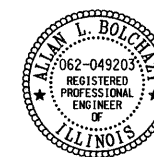


VILLAGE OF WILMETTE

APPROVED Dec. 31 20 07
Brigitte Mayerhoff
CITY ENGINEER

PASSED JANUARY 2 20 08
Christopher Holt
DISTRICT 1 ENGINEER OF LOCAL ROADS AND STREETS

RELEASED FOR BID
BASED ON LIMITED
REVIEW January 3 20 08
Devin O'Keefe
DEPUTY DIRECTOR OF HIGHWAYS, REGION 1 ENGINEER



Signed *A. Bolchazy*
Allan L. Bolchazy, P.E., H. Lic. No. 062-049203 For drawings 1-68
Expires 11-30-2009
Date 12/24/07

TYLIN INTERNATIONAL
PRINTED BY THE AUTHORITY OF THE STATE OF ILLINOIS