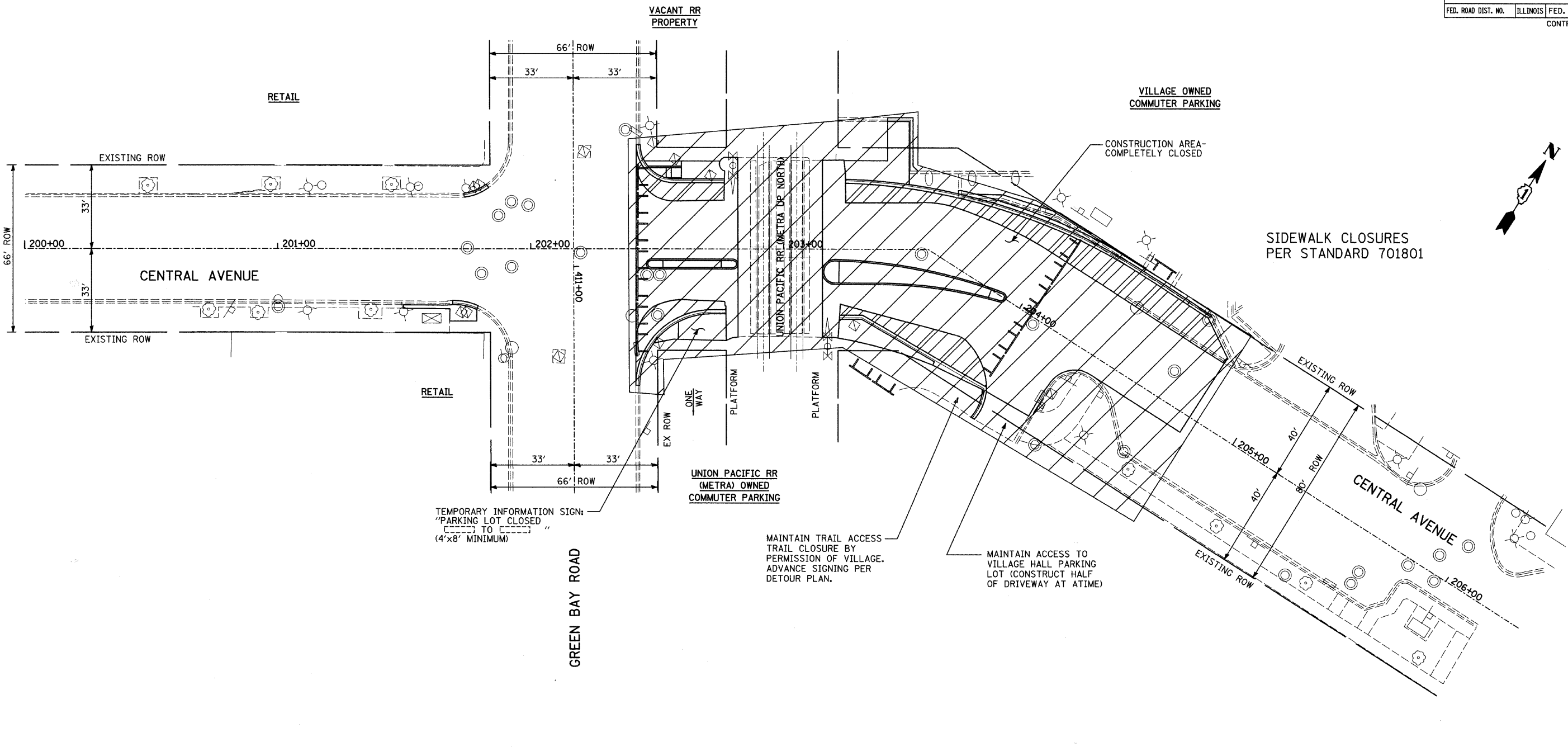


| | | | | |
|---------------------|----------------|------------------|--------------|--------------------|
| F.A.J. RTE. | SECTION | COUNTY | TOTAL SHEETS | SHEET NO. |
| 2744 | 06-00183-00-CH | COOK | 73 | 19 |
| STA. | | TO STA. | | |
| FED. ROAD DIST. NO. | ILLINOIS | FED. AID PROJECT | | CONTRACT NO. 83999 |

| | |
|-----------|------|
| PLAN | DATE |
| REVISIONS | BY |
| NO. | DATE |
| NO. | DATE |
| NO. | DATE |
| NO. | DATE |
| NO. | DATE |
| NO. | DATE |
| NO. | DATE |
| NO. | DATE |
| NO. | DATE |

| | |
|-----------|------|
| PROFILE | DATE |
| REVISIONS | BY |
| NO. | DATE |
| NO. | DATE |
| NO. | DATE |
| NO. | DATE |
| NO. | DATE |
| NO. | DATE |
| NO. | DATE |
| NO. | DATE |
| NO. | DATE |



TEMPORARY INFORMATION SIGN:
 "PARKING LOT CLOSED
 TO " " "
 (4'x8' MINIMUM)

MAINTAIN TRAIL ACCESS
 TRAIL CLOSURE BY
 PERMISSION OF VILLAGE.
 ADVANCE SIGNING PER
 DETOUR PLAN.

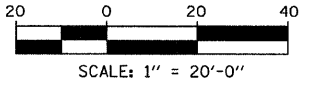
MAINTAIN ACCESS TO
 VILLAGE HALL PARKING
 LOT (CONSTRUCT HALF
 OF DRIVEWAY AT ATIME)

LEGEND:

- CONSTRUCTION WORK ZONE
- TYPE III BARRICADE

NOTE:

SEE DETOUR PLAN FOR
 ADDITIONAL SIGNING



| REVISIONS | |
|-----------|------|
| NAME | DATE |
| | |
| | |
| | |
| | |
| | |
| | |
| | |
| | |
| | |

**MAINTENANCE OF TRAFFIC
 ROAD CLOSURE PLAN**

CENTRAL AVENUE AT GREEN BAY ROAD

CONSULTANT
TYLIN INTERNATIONAL

**VILLAGE OF WILMETTE
 GREEN BAY ROAD
 INTERSECTION IMPROVEMENTS**

| | |
|------------------|--------------|
| DRAWN: | SHEET NO.: |
| CHECKED: | |
| APPROVED: | |
| DATE: 02-14-2008 | |
| SCALE: 1"=20'-0" | |
| JOB NO.: | PROJECT NO.: |