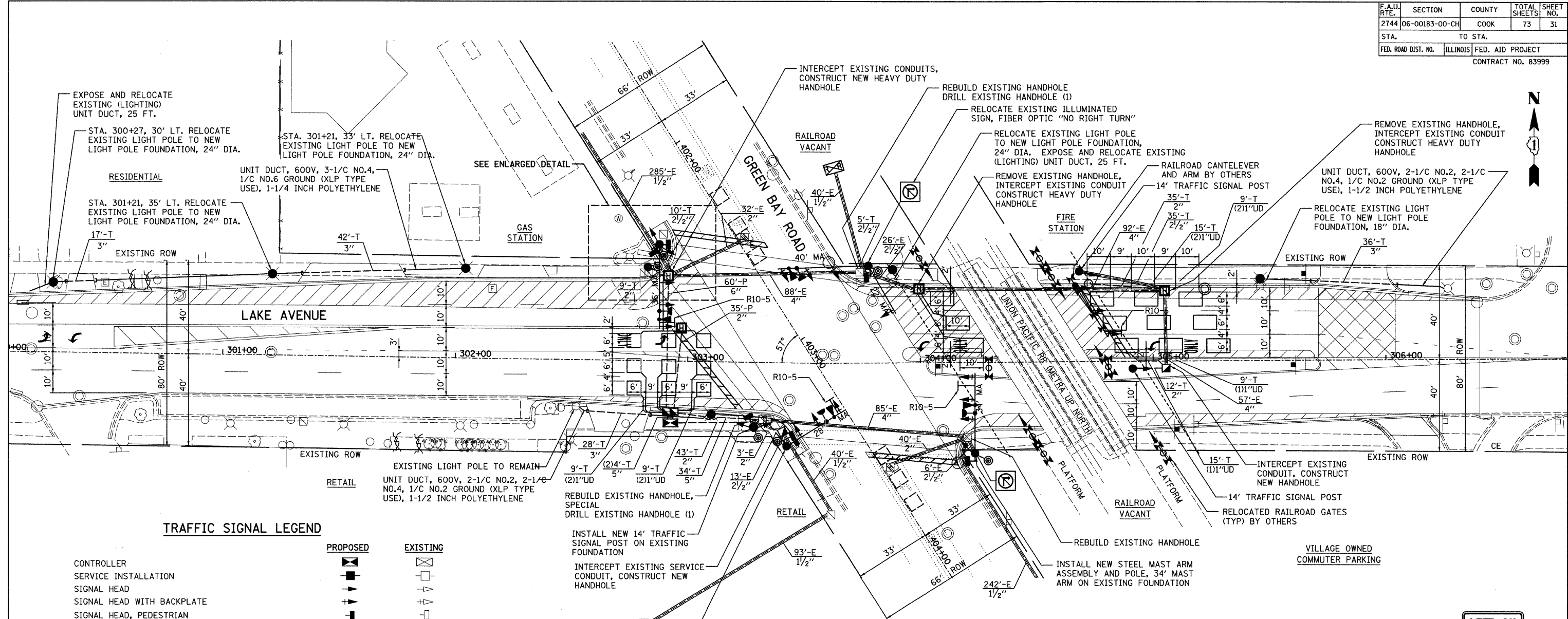


F.A.U. RTE.	SECTION	COUNTY	TOTAL SHEETS	SHEET NO.
2744	06-00183-00-CH	COOK	73	31
STA.	TO STA.		FED. AID PROJECT	
FED. ROAD DIST. NO.	ILLINOIS	CONTRACT NO. 83999		



DATE	BY

DATE	BY

TRAFFIC SIGNAL LEGEND

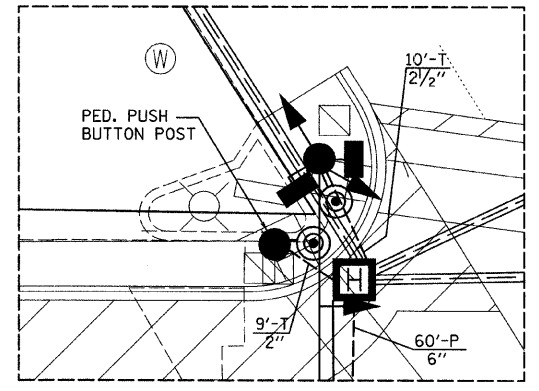
	PROPOSED	EXISTING
CONTROLLER		
SERVICE INSTALLATION		
SIGNAL HEAD		
SIGNAL HEAD WITH BACKPLATE		
SIGNAL HEAD, PEDESTRIAN		
SIGNAL POST		
MAST ARM ASSEMBLY AND POLE, STEEL		
MAST ARM ASSEMBLY AND POLE, ALUMINUM		
COMMON TRENCH		
UNIT DUCT		
HANDHOLE		
HEAVY DUTY HANDHOLE		
DOUBLE HANDHOLE		
G.S. CONDUIT IN TRENCH OR PUSHED		
PEDESTRIAN PUSHBUTTON DETECTOR		
DETECTOR LOOP		
CAST IRON JUNCTION BOX		
EMERGENCY VEHICLE SYSTEM DETECTOR		
CONFIRMATION BEACON		
SIGNAL HEAD OPTICALLY PROGRAMMED		
CONDUIT SPLICE		
WOOD POLE		
RACEWAY FOR MAGNETIC DETECTOR, TYPE I OR TYPE II		
VEHICLE DETECTOR, NON COMPENSATED MAGNETIC TYPE		
RAILROAD CONTROL CABINET		
ILLUMINATED SIGN, FIBER OPTIC "NO LEFT TURN"		
ILLUMINATED SIGN, FIBER OPTIC "NO RIGHT TURN"		
TELEPHONE		

REBUILD EXISTING HANDHOLE, SPECIAL DRILL EXISTING HANDHOLE (I)

INSTALL NEW 14' TRAFFIC SIGNAL POST ON EXISTING FOUNDATION

INTERCEPT EXISTING SERVICE CONDUIT, CONSTRUCT NEW HANDHOLE

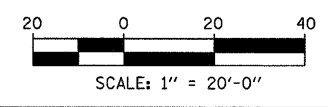
INSTALL NEW STEEL MAST ARM ASSEMBLY AND POLE, 28' MAST ARM ON EXISTING FOUNDATION



ENLARGED DETAIL
SCALE: 1"=10'-0"

LIGHTING SCHEDULE OF QUANTITIES

QUANTITY	UNIT	ITEM
CONDUIT IN TRENCH, 3" DIA. GALVANIZED STEEL	FOOT	123
UNIT DUCT, 600V, 3-1/C NO.4, 1/C NO.6 GROUND (XLP TYPE USE), 1-1/4 INCH POLYETHYLENE	FOOT	200
LIGHT UNIT FOUNDATION, 24 INCH DIAMETER	FOOT	44
LIGHTING FOUNDATION REMOVAL	EACH	6
EXPOSE AND RELOCATE EXISTING UNIT DUCT	FOOT	50
RELOCATE EXISTING LIGHT POLE	EACH	6
LIGHT UNIT FOUNDATION, 18 INCH DIAMETER	FOOT	22
UNIT DUCT, 600V, 2-1/C NO.2, 2-1/C NO.4, 1/C NO.2 GROUND (XLP TYPE USE), 1-1/2 INCH POLYETHYLENE	FOOT	164
TRENCH AND BACKFILL FOR ELECTRICAL WORK	FOOT	487



LEFT ON GREEN ARROW ONLY

SIGN DETAIL
N.T.S.
4 REQUIRED

REVISIONS	
NAME	DATE

TRAFFIC SIGNAL PLAN
LAKE AVENUE AT GREEN BAY ROAD

CONSULTANT
TYLIN INTERNATIONAL

VILLAGE OF WILMETTE	
GREEN BAY ROAD	
INTERSECTION IMPROVEMENTS	
DRAWN: BK	SHEET NO.
CHECKED: DAJ	
APPROVED: DAJ	
DATE: 02-14-2008	
SCALE: 1"=20'-0"	
JOB NO.:	PROJECT NO.: