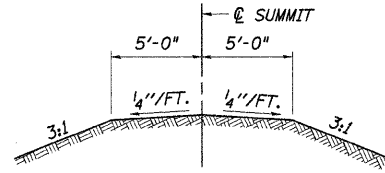


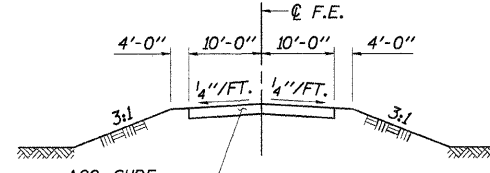
ROUTE NO.	SECTION	COUNTY	TOTAL SHEETS	SHEET NO.
T.R. 150	06-03122-00-BR	IROQUOIS	20	3
ASHKUM ROAD DIST.		ILLINOIS	BROS-075(133)	
CONTRACT NO. 87362				

**ENTRANCES TO BE BUILT**

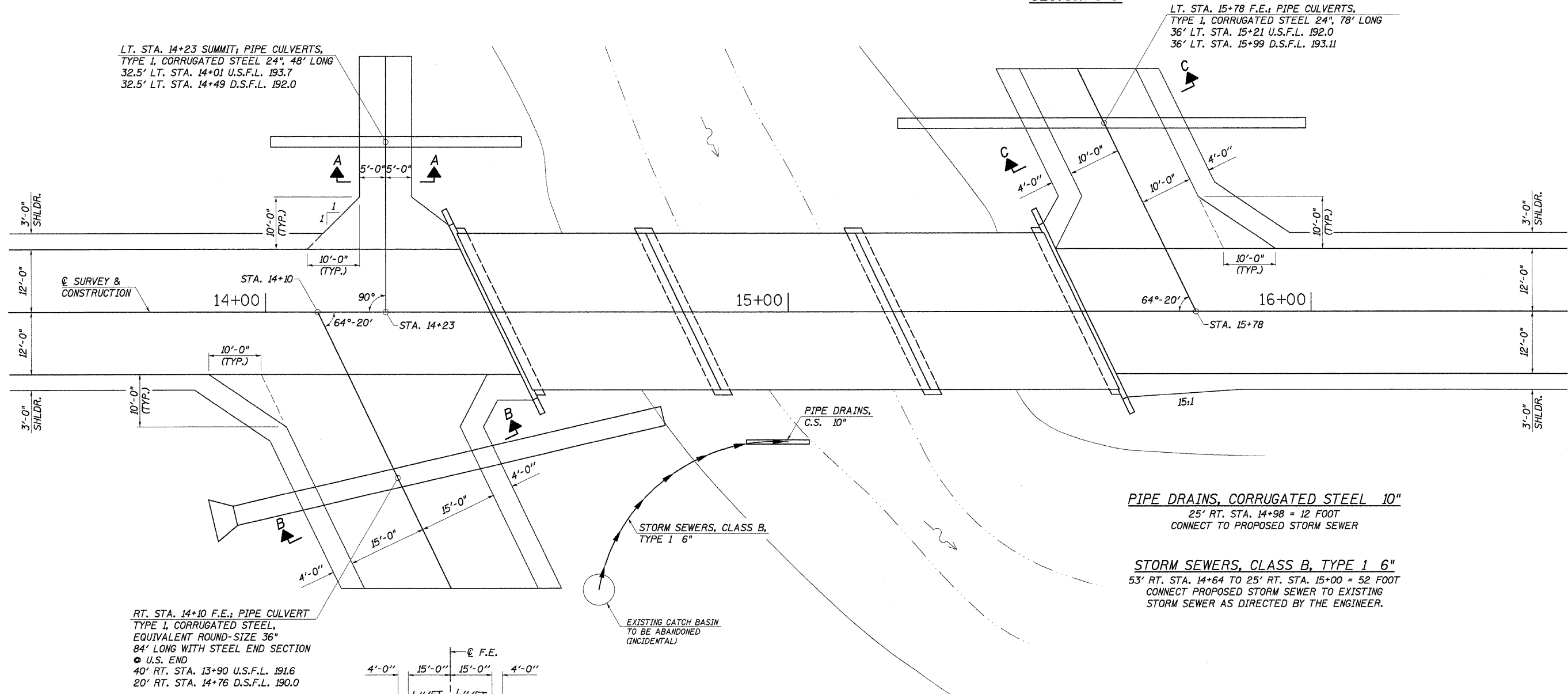
LT. STA. 14+23, SUMMIT -10.0%, 10' BERM  
 RT. STA. 14+10, F.E. -15.0%, 38' ROADBED  
 LT. STA. 15+78, F.E. -15.0%, 28' ROADBED  
 QUANTITIES INCLUDED IN THOSE LISTED



**SECTION A-A**



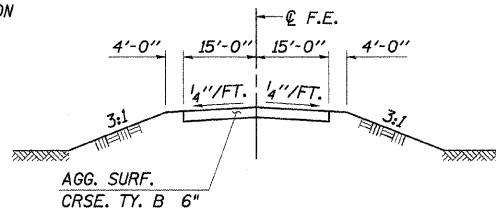
**SECTION C-C**



LT. STA. 14+23 SUMMIT; PIPE CULVERTS,  
 TYPE I, CORRUGATED STEEL 24", 48' LONG  
 32.5' LT. STA. 14+01 U.S.F.L. 193.7  
 32.5' LT. STA. 14+49 D.S.F.L. 192.0

LT. STA. 15+78 F.E.; PIPE CULVERTS,  
 TYPE I, CORRUGATED STEEL 24", 78' LONG  
 36' LT. STA. 15+21 U.S.F.L. 192.0  
 36' LT. STA. 15+99 D.S.F.L. 193.11

RT. STA. 14+10 F.E.; PIPE CULVERT  
 TYPE I, CORRUGATED STEEL,  
 EQUIVALENT ROUND-SIZE 36"  
 84' LONG WITH STEEL END SECTION  
 ● U.S. END  
 40' RT. STA. 13+90 U.S.F.L. 191.6  
 20' RT. STA. 14+76 D.S.F.L. 190.0



**SECTION B-B**

**PIPE DRAINS, CORRUGATED STEEL 10"**  
 25' RT. STA. 14+98 = 12 FOOT  
 CONNECT TO PROPOSED STORM SEWER

**STORM SEWERS, CLASS B, TYPE 1 6"**  
 53' RT. STA. 14+64 TO 25' RT. STA. 15+00 = 52 FOOT  
 CONNECT PROPOSED STORM SEWER TO EXISTING  
 STORM SEWER AS DIRECTED BY THE ENGINEER.

**ENTRANCE & DRAINAGE DETAILS**

SECTION 06-03122-00-BR  
 ASHKUM ROAD DISTRICT  
 IROQUOIS COUNTY  
 STATION 15+00

4440 ASH GROVE  
 SPRINGFIELD, IL. 62711  
 (217) 793-8600  
 www.fehr-graham.com

**FEHR-GRAHAM & ASSOCIATES, LLC**  
 ENGINEERING AND SCIENCE CONSULTANTS  
 PEORIA, ILLINOIS • ROCKFORD, ILLINOIS • SPRINGFIELD, ILLINOIS

DRAWN: S.A.P.  
 DATE: 07/31/07

CHECKED: F.J.S.  
 DATE: AUG./07

JOB NO.: 46864  
 FILE: 46864ENT.DGN  
 DATE: 11/08/07