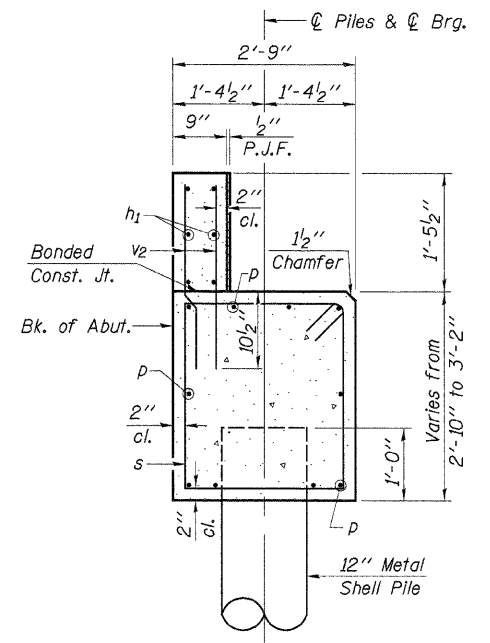


Name Plate shall be placed on the outside at the face of the SE. Wing of the South Abutment.

Note: After beams are in place and dowel rods grouted, the backwall and the portions of the wingwalls above the Bonded Construction Joint shall be poured.

**ELEVATION**

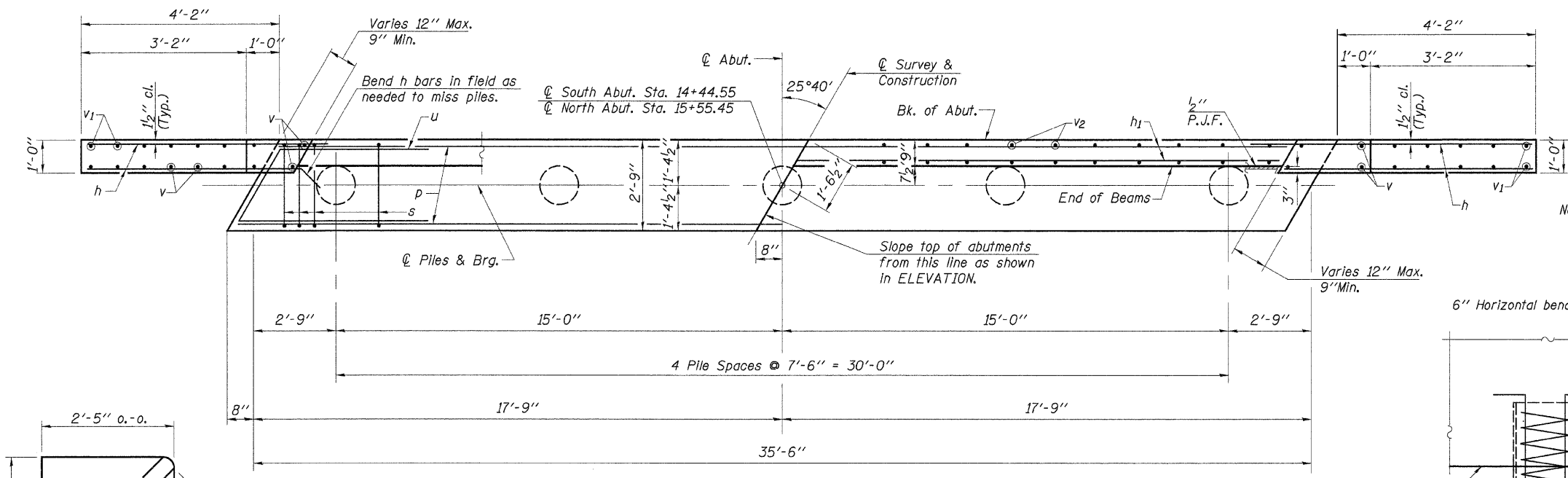


**SECTION THRU ABUT.**  
Rt. L's

**2 ABUTMENTS  
BILL OF MATERIAL**

Bar	No.	Size	Length	Shape
h	56	#5	6'-3"	—
h1	24	#4	18'-5"	—
p	20	#6	35'-2"	—
s	68	#5	10'-9"	□
u	16	#6	12'-7"	—
v	32	#4	4'-0"	—
v1	24	#4	3'-6"	—
v2	136	#4	2'-2"	—
Concrete Structures		Cu. Yd.	26.9	
Reinforcement Bars		Pound	3,120	
Name Plates		Each	1	
Test Pile Metal Shell		Each	1	
Metal Shell Piles 12"		Foot	405	

See Sheet 11 for Metal Pile Shell Details.

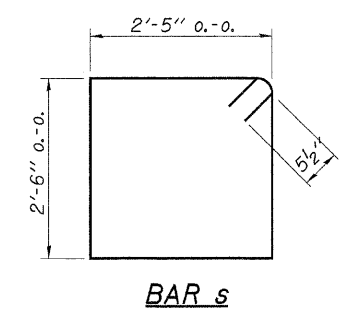


**PLAN**

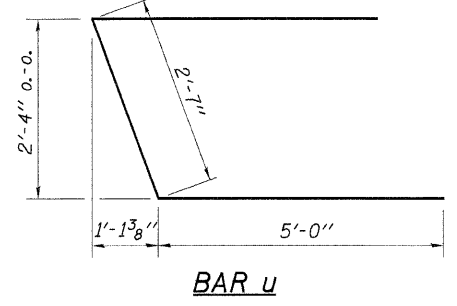
**PILE DATA**

Type & Size.....	Metal Shell - 12 in. dia. x 0.250 in. walls
No. Req'd. (2 Abut.).....	10*
Nominal Required Bearing.....	180 kips
Allowable Resistance Available.....	60 kips
Estimated Length.....	45 ft.

\*Includes 1 Test Pile to be driven in a permanent location at south abutment.  
The test piles shall be driven to 110 percent of the Nominal Required Bearing indicated above.

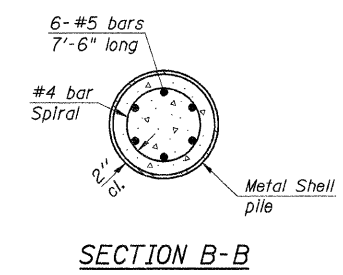


**BAR s**

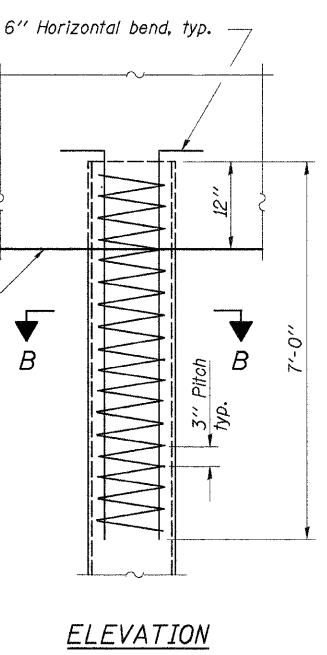


**BAR u**

DESIGNED	F.J.S.
CHECKED	S.F.M.
DRAWN	S.A.P.
CHECKED	F.J.S.



**SECTION B-B**



**ELEVATION**

**ABUTMENTS**

SECTION 06-03122-00-BR  
ASHKUM ROAD DISTRICT  
IROQUOIS COUNTY  
STATION 15+00

4440 ASH GROVE SPRINGFIELD, IL 62711 (217) 793-8600 www.fehr-graham.com	<b>FEHR-GRAHAM &amp; ASSOCIATES, LLC</b> ENGINEERING AND SCIENCE CONSULTANTS <small>REGISTERED PROFESSIONAL ENGINEERS &amp; ARCHITECTS IN ILLINOIS</small>	JOB NO.: 46864 FILE: 46864ABUT.dgn DATE: 11/08/07
--	--	---