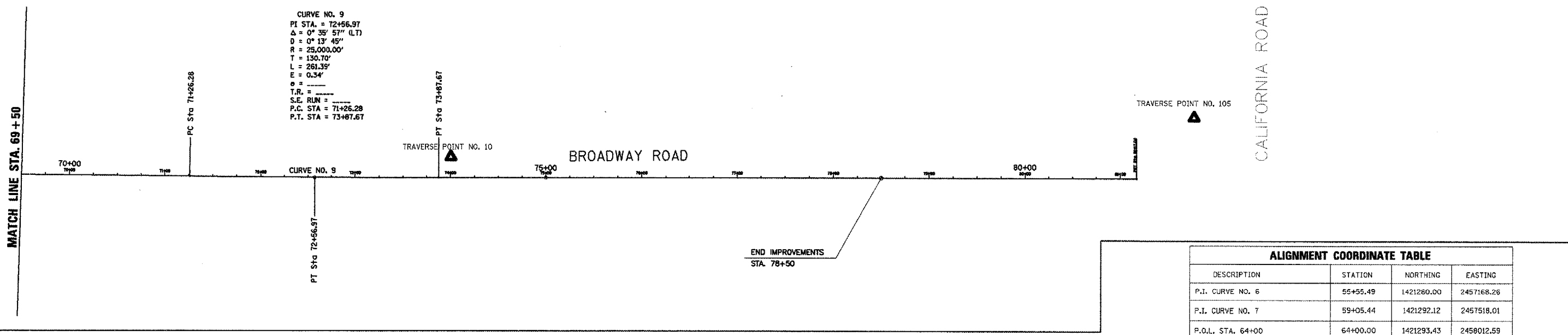
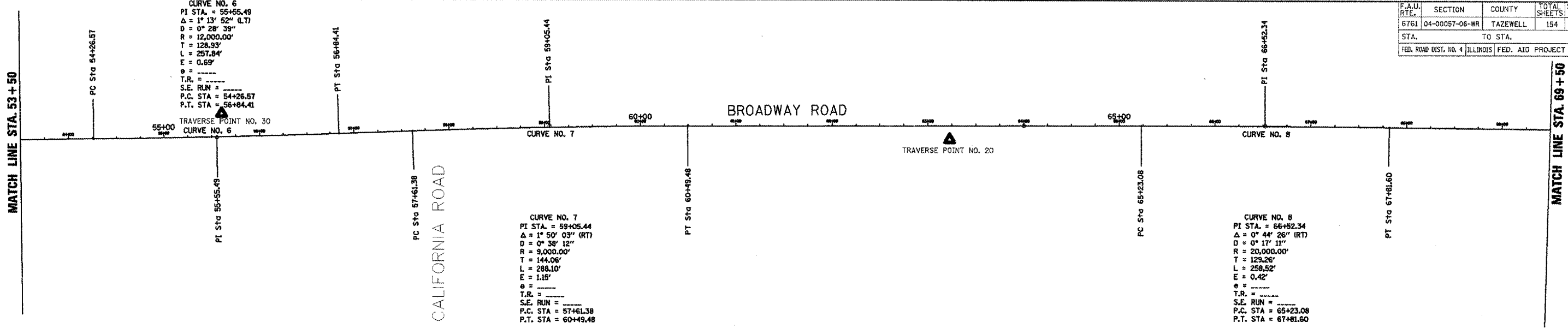
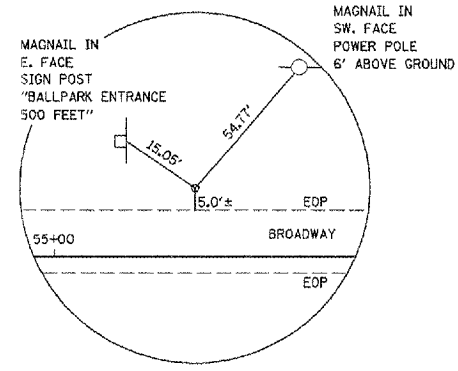


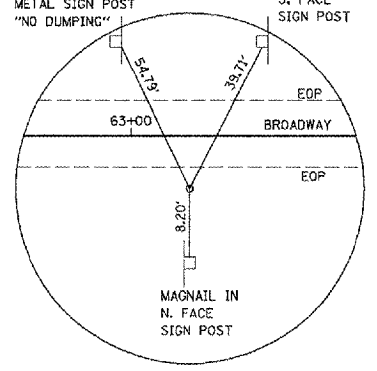
F.A.D. RTE.	SECTION	COUNTY	TOTAL SHEETS	SHEET NO.
6761	04-00057-06-WR	TAZEWELL	154	24
STA.		TO STA.		
FED. ROAD DIST. NO. 4		ILLINOIS FED. AID PROJECT		



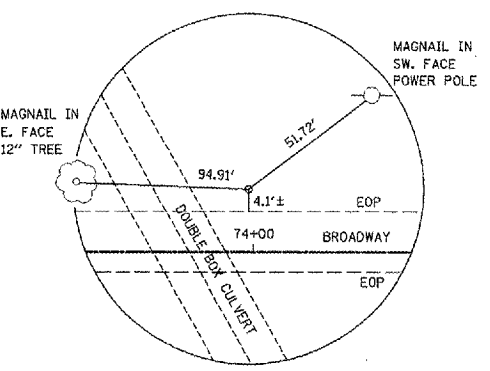
DESCRIPTION	STATION	NORTHING	EASTING
P.I. CURVE NO. 6	55+55.49	1421280.00	2457168.26
P.I. CURVE NO. 7	59+05.44	1421292.12	2457518.01
P.O.L. STA. 64+00	64+00.00	1421293.43	2458012.59
P.I. CURVE NO. 8	66+52.34	1421294.09	2458264.94
P.I. CURVE NO. 9	72+56.97	1421287.87	2458869.54
P.O.L. STA. 75+00	75+00.00	1421287.91	2459112.57



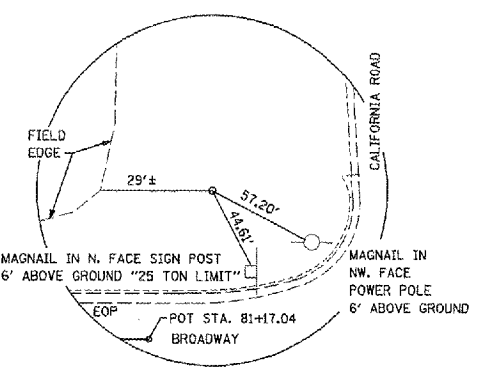
TRAVERSE POINT NO. 30
 1/2" IRON ROD W/CAP
 STA. 55+60.14, 25.36' LT.
 N. = 1421300.16
 E. = 2457172.28
 BENCHMARK ELEV. = 604.12



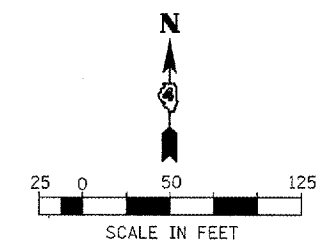
TRAVERSE POINT NO. 20
 1/2" IRON ROD W/CAP
 STA. 63+21.83, 12.79' RT.
 N. = 1421310.81
 E. = 2457934.52
 BENCHMARK ELEV. = 609.37



TRAVERSE POINT NO. 10
 1/2" IRON ROD W/CAP
 STA. 73+99.83, 22.91' LT.
 N. = 1421310.81
 E. = 2459032.39
 BENCHMARK ELEV. = 597.65



TRAVERSE POINT NO. 105
 1/2" IRON ROD W/CAP
 STA. 81+36.78, 77.01' LT.
 N. = 14213165.03
 E. = 2459749.34
 BENCHMARK ELEV. = 638.68



NAME	DATE

ILLINOIS DEPARTMENT OF TRANSPORTATION
**BROADWAY ROAD IMPROVEMENTS
 ALIGNMENT TIES, BENCHMARKS
 AND LINE DIAGRAM**

SCALE: DATE 12/07/2007 DRAWN BY: DLC CHECKED BY: REW

PLOT DATE = 2/8/2008
 FILE NAME = I:\2008\86791\Drawings\TIES AND BMS.dwg
 PLOT SCALE = 50.0000 / IN.
 USER NAME = DDOT