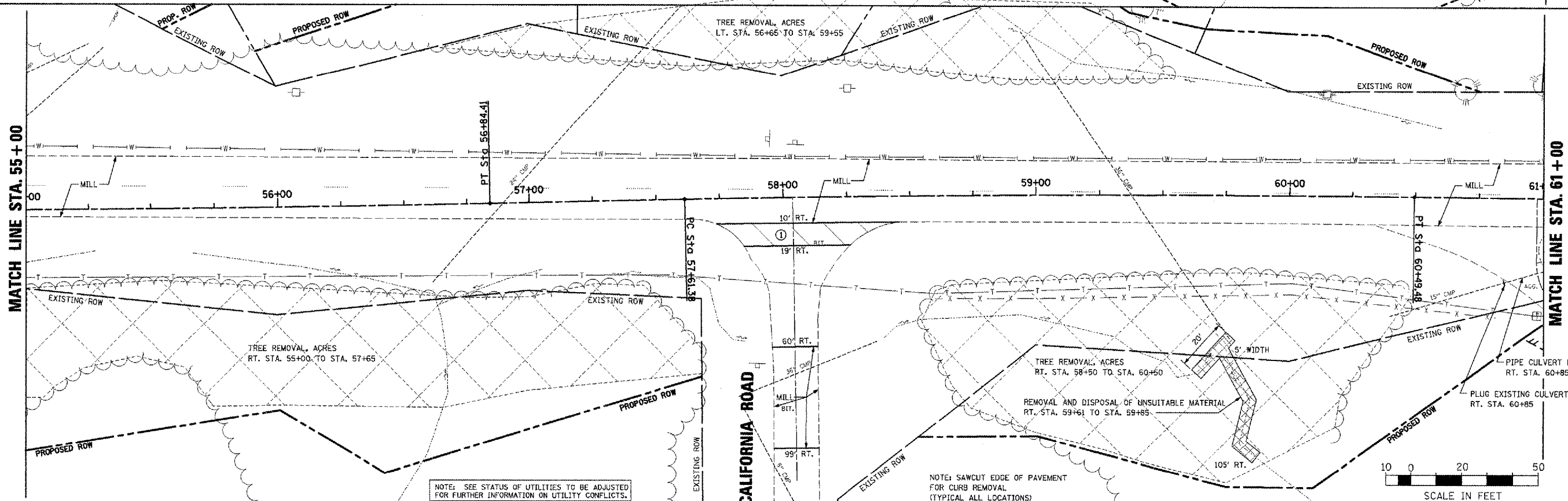
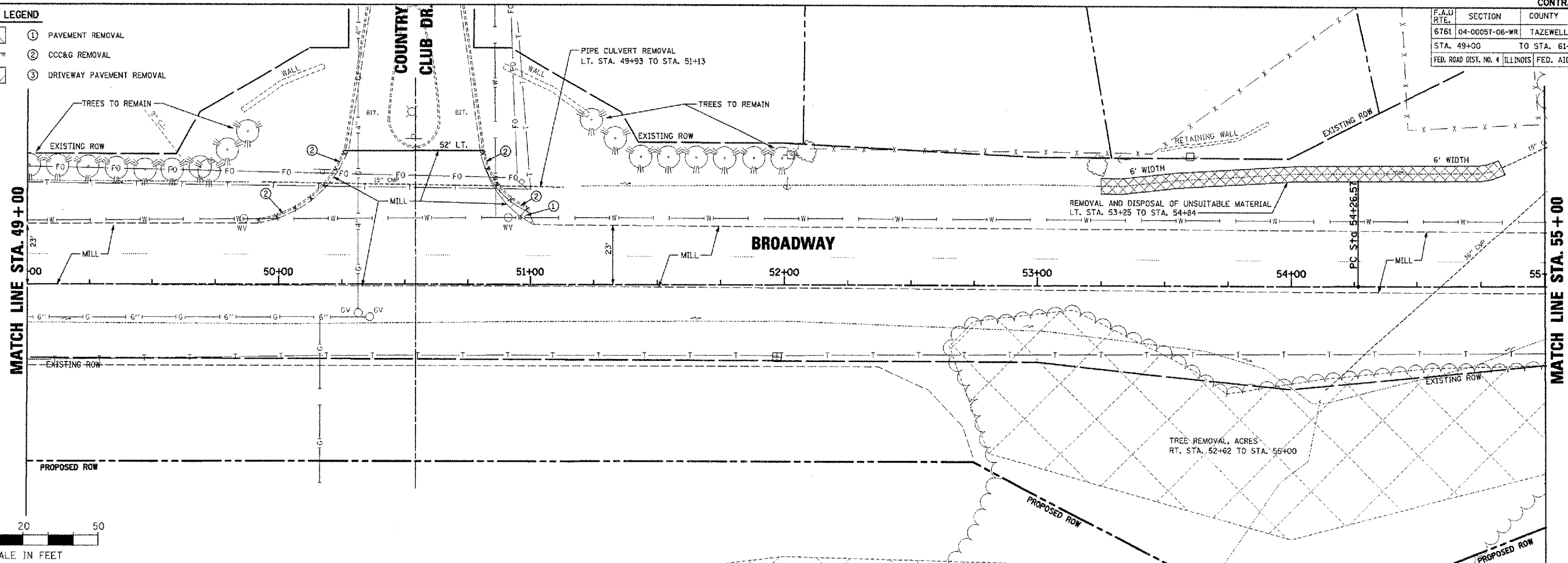


F.A.U. RTE.	SECTION	COUNTY	TOTAL SHEETS	SHEET NO.
6761	04-00057-06-WR	TAZEWELL	154	29
STA. 49+00		TO STA. 61+00		
FED. ROAD DIST. NO. 4 ILLINOIS FED. AID PROJECT				

REMOVAL LEGEND

- ① PAVEMENT REMOVAL
- ② CCC&G REMOVAL
- ③ DRIVEWAY PAVEMENT REMOVAL



PLAN

DATE	
BY	
DESIGNED	
CHECKED	
IN CHARGE	
NOTE BOOK NO.	
DATE FILED	
FILE NAME	

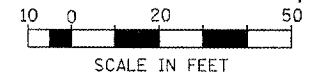
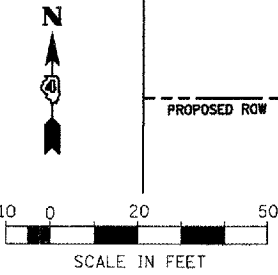
PROFILE

DATE	
BY	
DESIGNED	
CHECKED	
IN CHARGE	
NOTE BOOK NO.	
DATE FILED	
FILE NAME	

PLOT DATE = 2/26/2008
 PLOT SCALE = 1"=200' PT / 2"
 USER NAME = IDOT

NOTE: SEE STATUS OF UTILITIES TO BE ADJUSTED FOR FURTHER INFORMATION ON UTILITY CONFLICTS.

NOTE: SAWCUT EDGE OF PAVEMENT FOR CURB REMOVAL (TYPICAL ALL LOCATIONS)



BROADWAY - REMOVAL PLANS - STA. 49+00 TO STA. 61+00