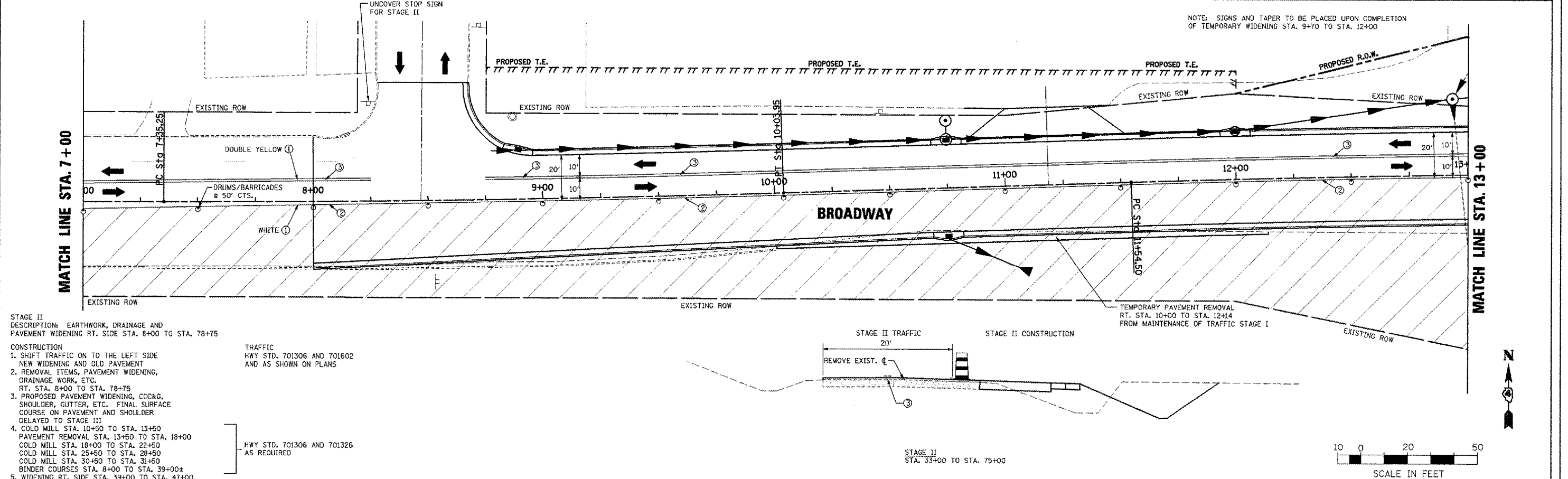
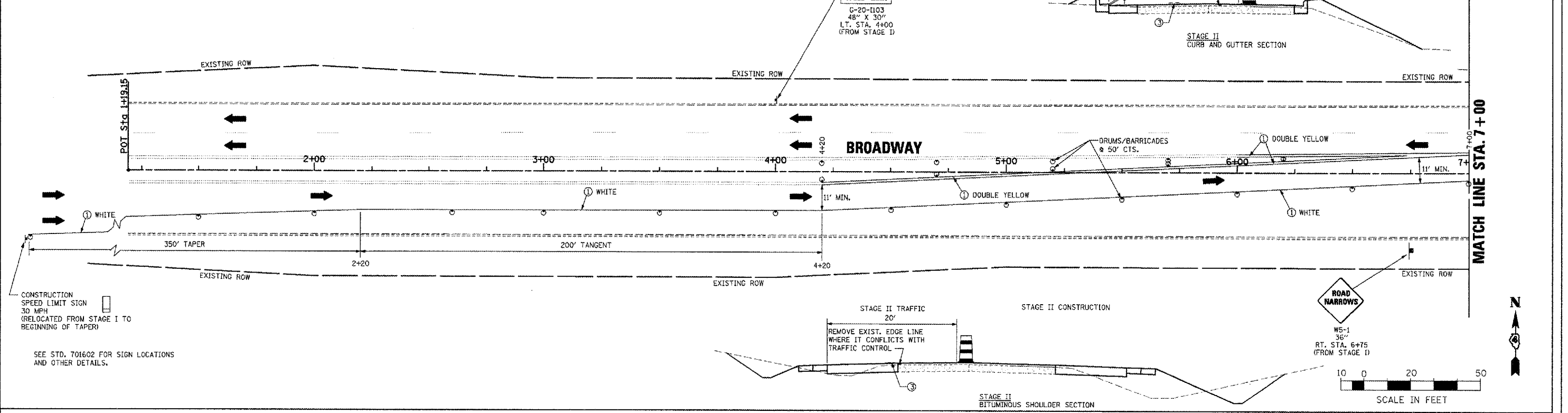


F.A.U. RTE.	SECTION	COUNTY	TOTAL SHEETS	SHEET NO.
6761	04-00057-06-WR	TAZEWELL	154	51
STA. 1+19.15		TO STA. 13+00		
FED. ROAD DIST. NO. 4 (ILLINOIS) FED. AID PROJECT				

LEGEND

- DRUMS WITH LIGHTS OR TYPE 1, TYPE 2 BARRICADES
- TYPE III BARRICADES, STD. BLR 17
- DENOTES WORK ZONE
- ① SHORT-TERM PAVEMENT MARKING
- ② TEMPORARY PAVEMENT MARKING - LINE 4" (WHITE)
- ③ TEMPORARY PAVEMENT MARKING - LINE 4" (DOUBLE YELLOW)
- ④ TEMPORARY PAVEMENT MARKING - LINE 24" (WHITE STOP BAR)

NOTE: PLACEMENT OF "END WORK ZONE SPEED LIMIT" SIGN MAY NEED TO BE ADJUSTED IN THE FIELD.



STAGE II DESCRIPTION: EARTHWORK, DRAINAGE AND PAVEMENT WIDENING RT. SIDE STA. 8+00 TO STA. 78+75

- CONSTRUCTION**
- SHIFT TRAFFIC ON TO THE LEFT SIDE NEW WIDENING AND OLD PAVEMENT
 - REMOVAL ITEMS, PAVEMENT WIDENING, DRAINAGE WORK, ETC. RT. STA. 8+00 TO STA. 78+75
 - PROPOSED PAVEMENT WIDENING, CCC&G, SHOULDER, GUTTER, ETC. FINAL SURFACE COURSE ON PAVEMENT AND SHOULDER DELAYED TO STAGE III
 - COLD MILL STA. 10+50 TO STA. 13+50 PAVEMENT REMOVAL STA. 13+50 TO STA. 18+00 COLD MILL STA. 18+00 TO STA. 22+50 COLD MILL STA. 25+50 TO STA. 28+50 COLD MILL STA. 30+50 TO STA. 31+50 BINDER COURSES STA. 8+00 TO STA. 39+00±
 - WIDENING RT. SIDE STA. 39+00 TO STA. 47+00

TRAFFIC HWY STD. 701306 AND 701602 AND AS SHOWN ON PLANS

HWY STD. 701306 AND 701326 AS REQUIRED

BROADWAY - MAINTENANCE OF TRAFFIC - STAGE II PLANS - STA. 1+19.15 TO STA. 13+00

PLAN

DATE	
BY	
REVISION	
NO.	
DATE	
BY	
REVISION	
NO.	
DATE	
BY	
REVISION	
NO.	

PROFILE

DATE	
BY	
REVISION	
NO.	
DATE	
BY	
REVISION	
NO.	
DATE	
BY	
REVISION	
NO.	

PLT DATE = 2/9/2008
 PLT SCALE = 1"=200'
 USER NAME = jdot