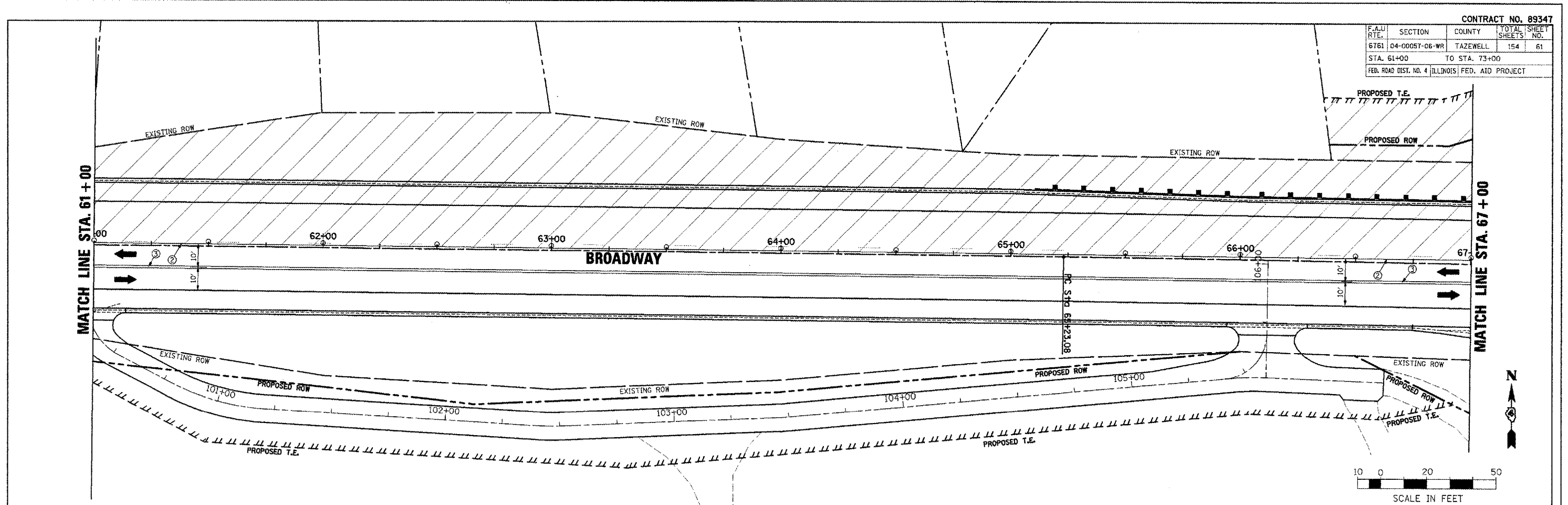


F.A.U. RTE.	SECTION	COUNTY	TOTAL SHEETS	SHEET NO.
6761	04-00057-06-WR	TAZEWELL	154	61
STA. 61+00		TO STA. 73+00		
FEB. ROAD DIST. NO. 4 ILLINOIS FED. AID PROJECT				

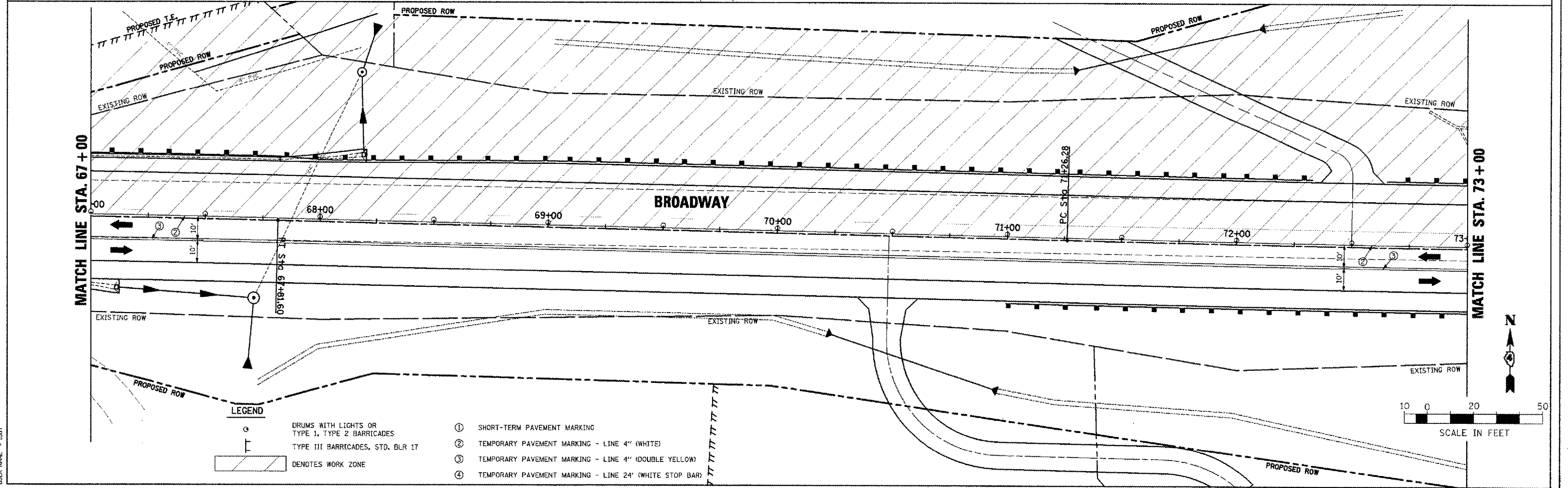
DATE	BY	REVISION

CHECKED BY: \_\_\_\_\_  
 DATE: \_\_\_\_\_  
 DRAWN BY: \_\_\_\_\_  
 DATE: \_\_\_\_\_  
 PROJECT NO.: \_\_\_\_\_  
 SHEET NO.: \_\_\_\_\_



DATE	BY	REVISION

CHECKED BY: \_\_\_\_\_  
 DATE: \_\_\_\_\_  
 DRAWN BY: \_\_\_\_\_  
 DATE: \_\_\_\_\_  
 PROJECT NO.: \_\_\_\_\_  
 SHEET NO.: \_\_\_\_\_



- LEGEND**
- DRUMS WITH LIGHTS OR TYPE 1, TYPE 2 BARRICADES
  - TYPE III BARRICADES, STD. BLR 17
  - DENOTES WORK ZONE
  - ① SHORT-TERM PAVEMENT MARKING
  - ② TEMPORARY PAVEMENT MARKING - LINE 4" (WHITE)
  - ③ TEMPORARY PAVEMENT MARKING - LINE 4" (DOUBLE YELLOW)
  - ④ TEMPORARY PAVEMENT MARKING - LINE 24" (WHITE STOP BAR)

**BROADWAY - MAINTENANCE OF TRAFFIC - STAGE III PLANS - STA. 61+00 TO STA. 73+00**