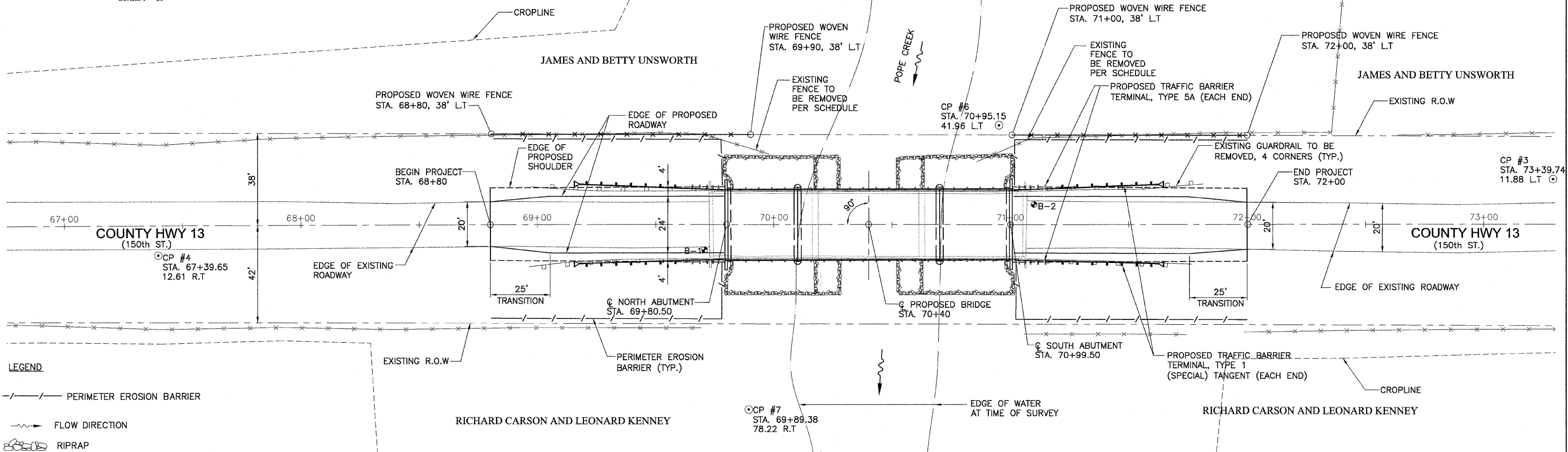


BENCHMARKS:
 B.M. ELEV. 596.90
 TBM1-NAIL SET IN E. FACE OF P. POLE
 600'+/- N. OF CENTER BRIDGE W. SIDE OF SEATON RD.
 B.M. ELEV. 594.12
 TBM2-NAIL IN FENCE POST ON N. SIDE OF FIELD ENT.
 E. SIDE OF SEATON RD. 200'+/- S. OF CENTER OF BRIDGE

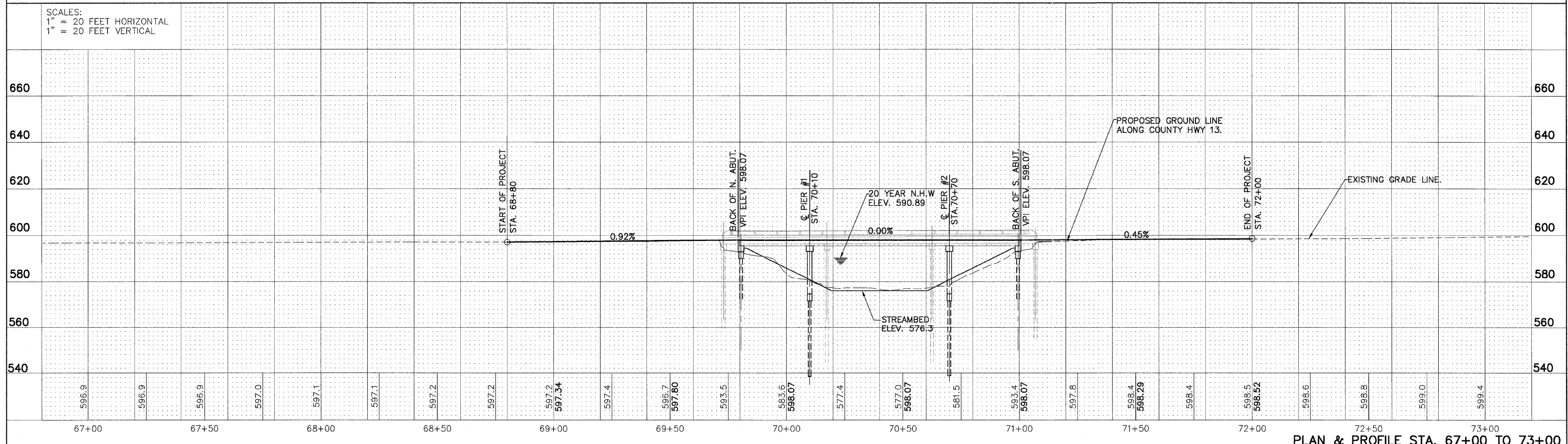
ROUTE NO.	SECTION	COUNTY	TOTAL SHEETS	SHEET NO.
F.A.S. 214	*	MERCER	16	4
FED. ROAD DIST. NO. 7	ILLINOIS		89387	

*05-00023-02-BR



- LEGEND**
- PERIMETER EROSION BARRIER
 - FLOW DIRECTION
 - RIPRAP

SCALES:
 1" = 20 FEET HORIZONTAL
 1" = 20 FEET VERTICAL



PLAN & PROFILE STA. 67+00 TO 73+00