

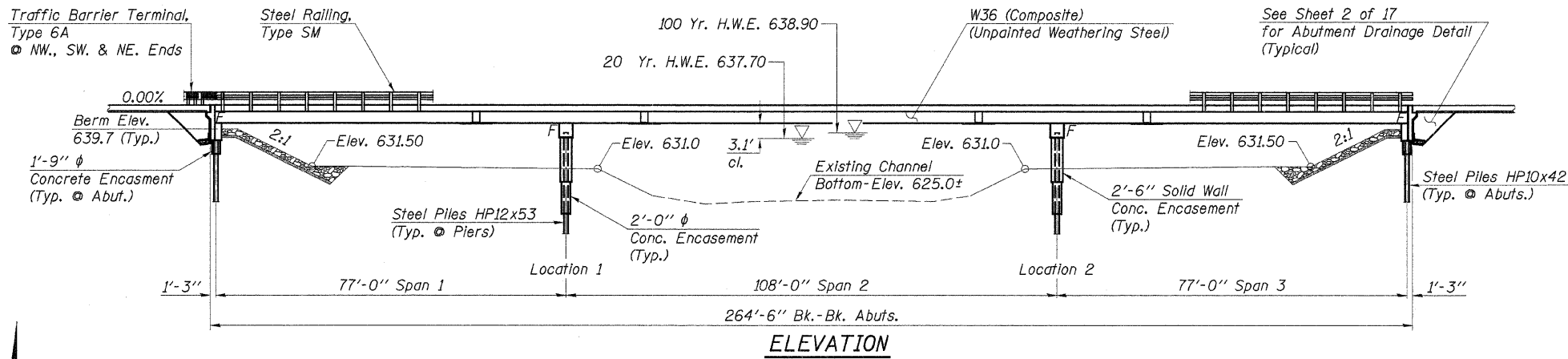
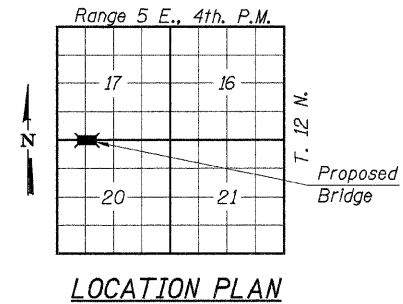
Existing Structure No. 088-3107

Sta. 155+75 - 3-Span Continuous Steel Wide Flange Beam Bridge
with Bituminous Surfaced Concrete Deck on Spill-Through Column
Abutments and Solid Wall Piers founded on timber pile supported footings.
253'-6" Bk.-Bk. Abuts., 27'-4" O.-O. Deck, 0° Skew.

B.M. Descriptions

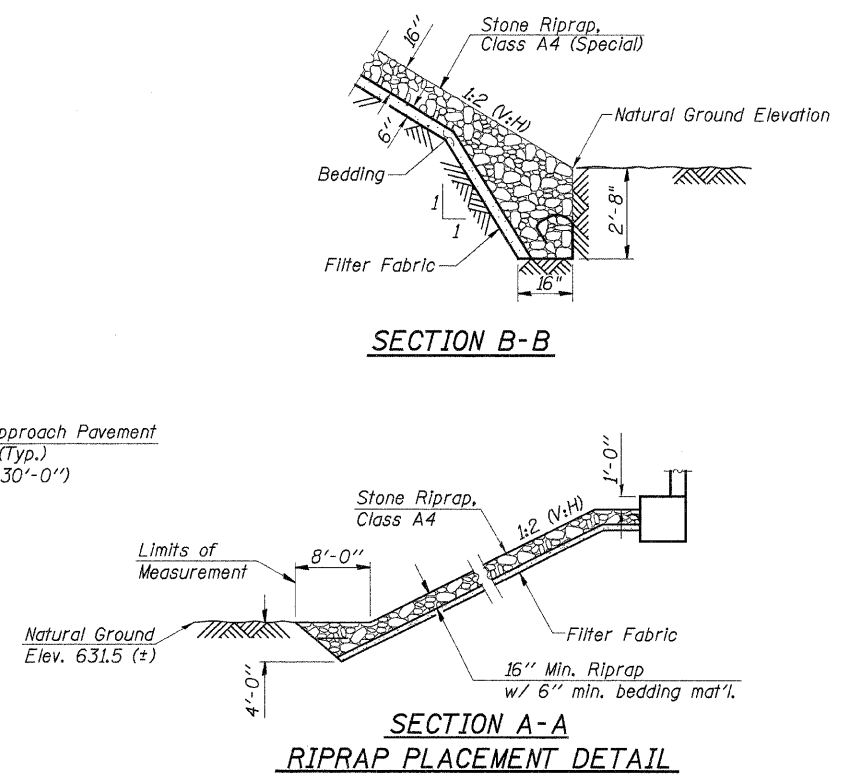
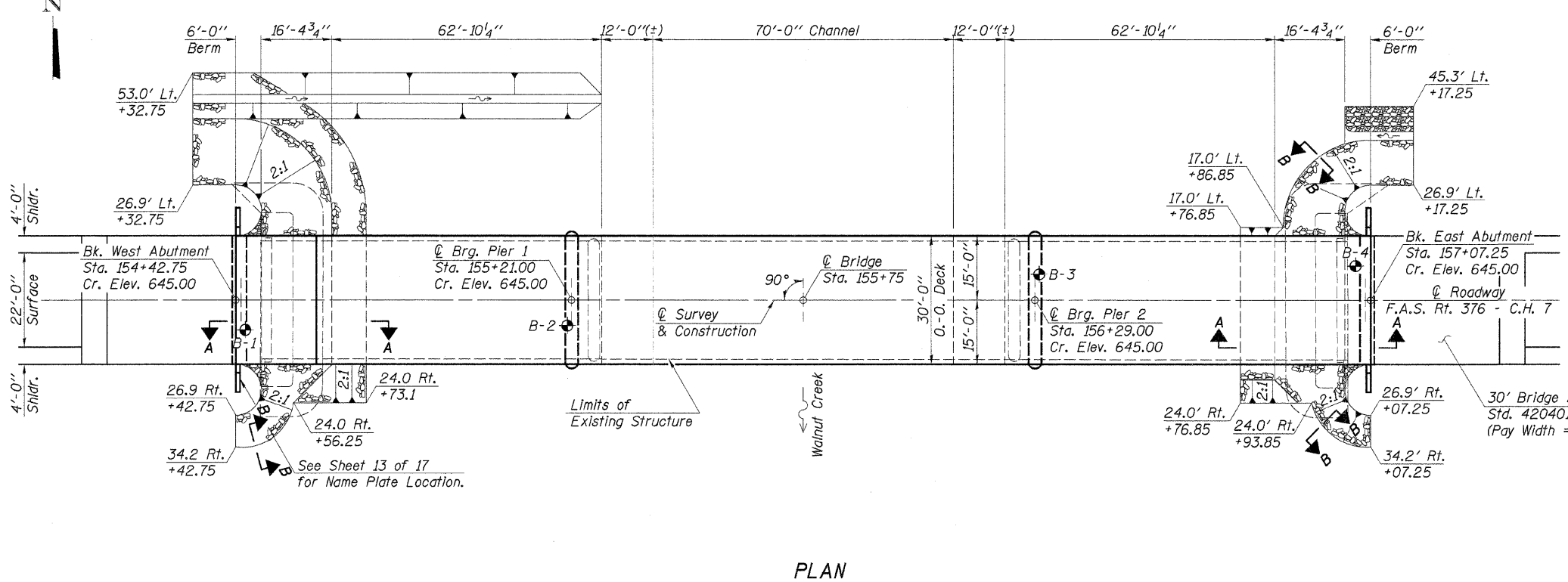
B.M. #3 - Chiseled "□" MW. Corner Wing
Elev. 644.00

ROUTE NO.	SECTION	COUNTY	TOTAL SHEETS	SHEET NO.
C.H. 7	03-00147	STARK	25	5
F.A.S. 376	-01-BR			
ROAD DIST.	ILLINOIS	FED. AID PROJECT		
			Sheet 1 of 17	CONTRACT NO. 89452



INDEX OF SHEETS

- General Plan and Elevation
- General Notes and Bill of Materials
- 5. Top of Slab Elevations
- 7. Superstructure
- 8. Steel Railing, Type SM
- 10. Structural Steel
- 11. Bearing Details
- 12. Anchor Bolt Details
- 14. Abutments
- 16. Piers
- 17. Bar Splicers



Construction Permits:
The requirements of the IDNR - Office of Water Resources have been fulfilled in accordance with Statewide Permit No. 2.

WATERWAY INFORMATION

Drainage Area	159.43 Sq. Mi.
Existing Opening (20 Yr.)	1816 Sq. Ft.
Required Opening (20 Yr.)	2043 Sq. Ft.
Proposed Opening (20 Yr.)	2043 Sq. Ft.
Design Discharge (20 Yr.)	6527 C.F.S.
Created Head (20 Yr.)	0.3 Ft.
100 Year Discharge	9469 C.F.S.
100 Yr. Created Head	0.5 Ft.

SEISMIC DATA

Seismic Performance Category (SPC) = A
Bedrock Acceleration Coefficient (A) = 0.038g
Site Coefficient (S) = 1.0

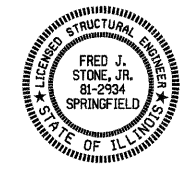
LOADING HS 20-44
25#/Sq. Ft. included in dead load for future wearing surface.

DESIGN STRESSES

$f_c = 3,500$ p.s.i. (Sub. & Super)
 $f_y = 60,000$ p.s.i. (Reinf. Bars -- Field Units)
 $f_y = 50,000$ p.s.i. AASHTO M270 GR 50W (Structural Steel)

"I certify that to the best of my knowledge, information and belief, this bridge design is structurally adequate for the design loading shown on the plans. The design is an economical one for the style of structure and complies with requirements of the current 'AASHTO Standard Specifications for Highway Bridges'."

DESIGNED	A.R.K.
CHECKED	F.J.S. & S.F.M.
DRAWN	S.A.P.
CHECKED	A.R.K. & F.J.S.



GENERAL PLAN & ELEVATION

SECTION 03-00147-01-BR
COUNTY HIGHWAY 7
STARK COUNTY
STATION 155+75

4440 ASH GROVE
SPRINGFIELD, IL 62711
(217) 793-8600
oasinc@insightbb.com

FEHR-GRAHAM & ASSOCIATES, LLC
ENGINEERING AND SCIENCE CONSULTANTS
PREPARED BY: ROBERTO L. RICHELLE, E. MORNINGVIEW SPRINGFIELD, IL

JOB NO.: 46808
FILE: 46808GPE.DSN
DATE: 01/02/08

Fred J. Stone, Jr. (1-4-08)
ILLINOIS STRUCTURAL NO. 2934 (Expires 11/30/08)