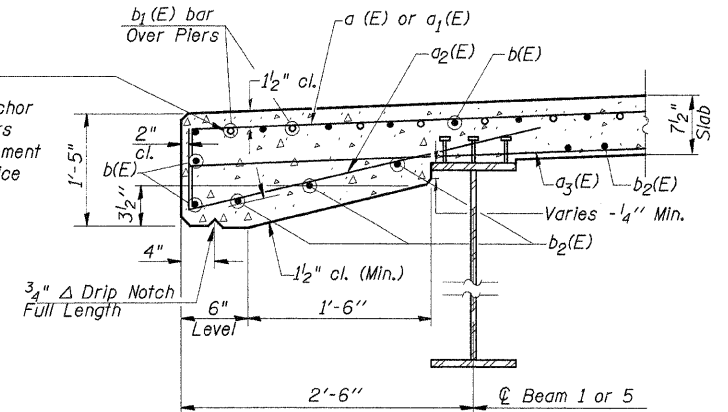


**HALF PLAN**

Reinforcement bars in the top of the deck shall be placed with a 1/2" minimum clearance in the area of the rail post anchor devices. The studs of the anchor device shall be placed below the top reinforcement bars a(E) and a1(E) and the outermost longitudinal reinforcement bar b(E) shall be placed directly above the anchor device studs.



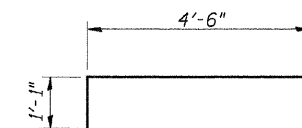
**SECTION THRU EDGE OF SLAB**

**SUPERSTRUCTURE BILL OF MATERIAL**

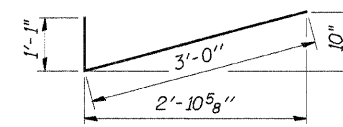
Bar	No.	Size	Length	Shape
a (E)	454	#5	29'-8"	—
a1 (E)	454	#6	5'-7"	—
a2 (E)	454	#5	4'-1"	✓
a3 (E)	318	#5	29'-4"	—
b (E)	340	#5	27'-11"	—
b1 (E)	116	#6	28'-10"	—
b2 (E)	330	#5	25'-7"	—
m (E)	10	#6	29'-8"	—
m1 (E)	20	#6	8'-3"	—
m2 (E)	8	#6	6'-0"	—
m3 (E)	4	#6	2'-4"	—
s (E)	68	#5	5'-9"	✓
s1 (E)	60	#4	10'-2"	□
v1 (E)	62	#5	2'-9"	└
Protective Coat		Sq. Yd.	964	
Conc. Superstructure		Cu. Yd.	243.0	
Reinforcement Bars, Epoxy Coated		Pound	55,020	
Bridge Deck Grooving		Sq. Yd.	882	

**MIN. BAR LAPS**

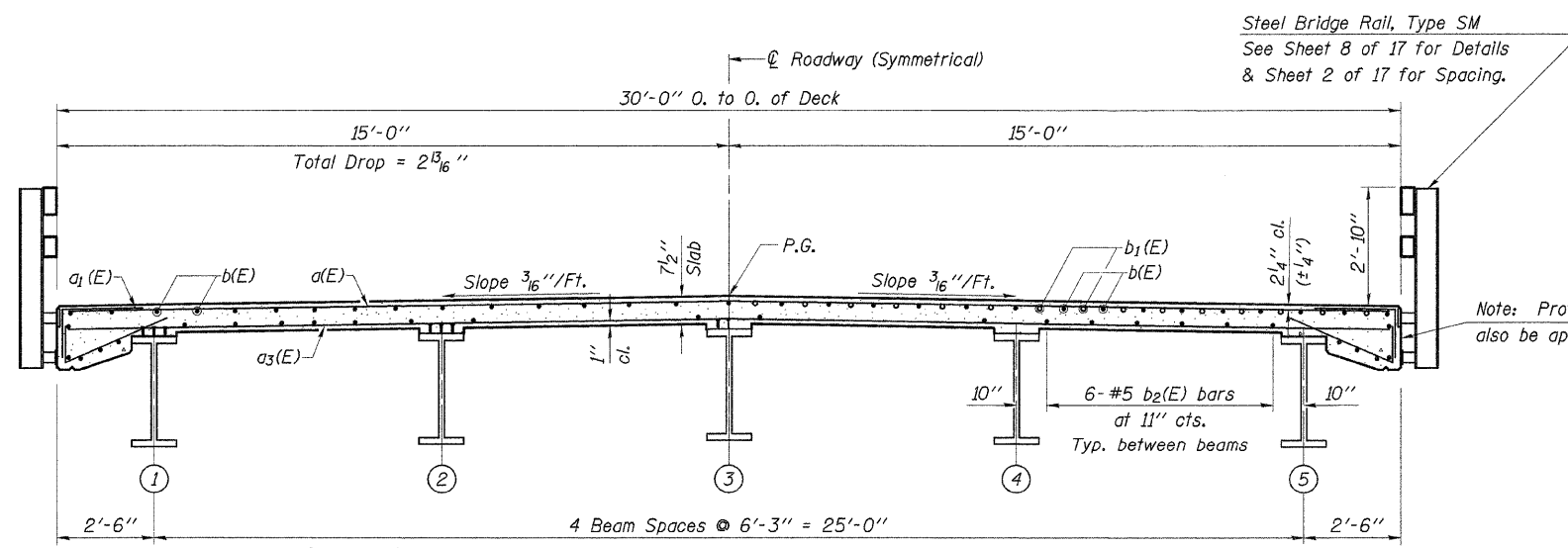
- #5 1'-8"
- #6 2'-0"



**BAR a1(E)**



**BAR a2(E)**



**CROSS SECTION (Looking East)**

DESIGNED	A.R.K.
CHECKED	F.J.S. & S.F.M.
DRAWN	S.A.P.
CHECKED	A.R.K. & F.J.S.

Reinforcement Bars designated (E) shall be epoxy coated.  
 Bars indicated thus 20x3-#5 etc. indicates 20 lines of bars with 3 lengths per line.  
 See Sheet 17 of 17 for Bar Splicer Details.

Work this Sheet with Sheet 7 of 17.

**SUPERSTRUCTURE**  
 SECTION 03-00147-01-BR  
 COUNTY HIGHWAY 7  
 STARK COUNTY  
 STATION 155+75

4440 ASH GROVE SPRINGFIELD, IL 62711 (217) 793-8600 oasinc@insightbb.com	<b>FEHR-GRAHAM &amp; ASSOCIATES, LLC</b> ENGINEERING AND SCIENCE CONSULTANTS PREPARE, IL, RODRIGO, IL, ROCHELLE, IL, SPRINGFIELD, IL	JOB NO.: 46808 FILE: 46808SUPERL.DGN DATE: 07/17/06
---	--	---