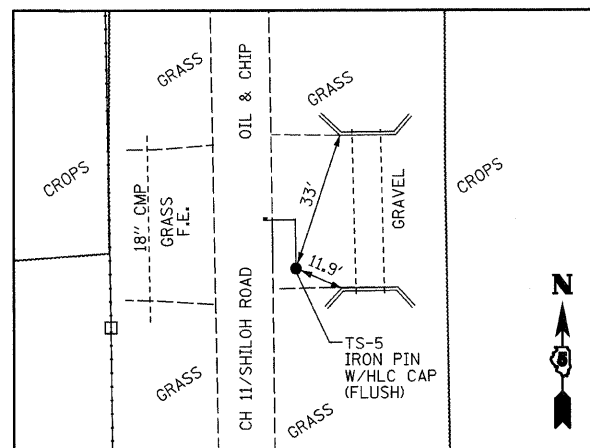


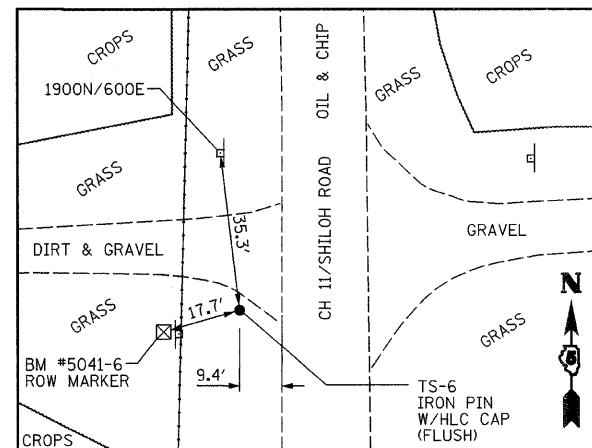
ROUTE NO.	SECTION	COUNTY	TOTAL SHEETS	SHEET NO.
CH 11	*	EDGAR	160	41

FED. ROAD DIST. NO. 5 ILLINOIS PROJECT

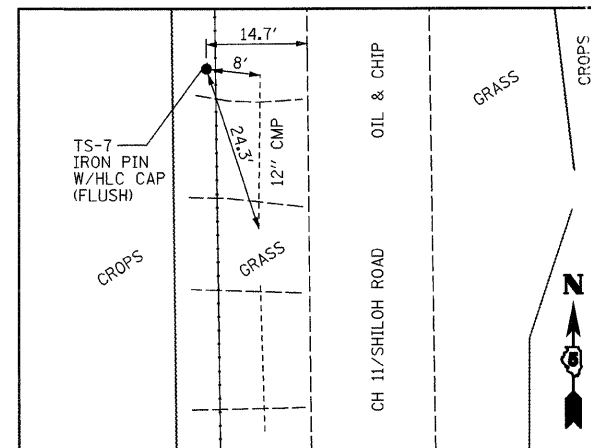
\* 05-00092-01-PV



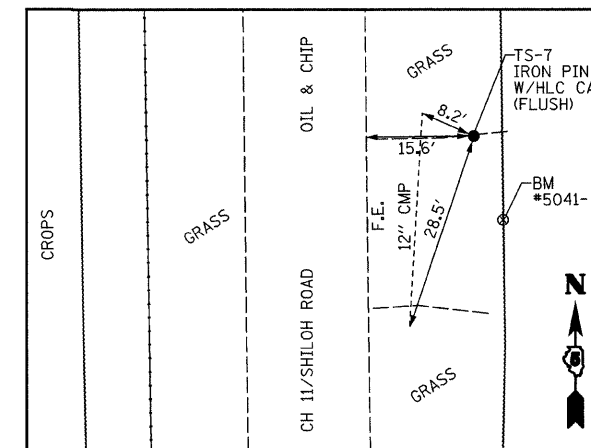
TS - 5  
 STA 89+99.12  
 O/S 19.14' RT  
 N 1,119,283.307  
 E 1,118,864.209  
 ELEV 665.82



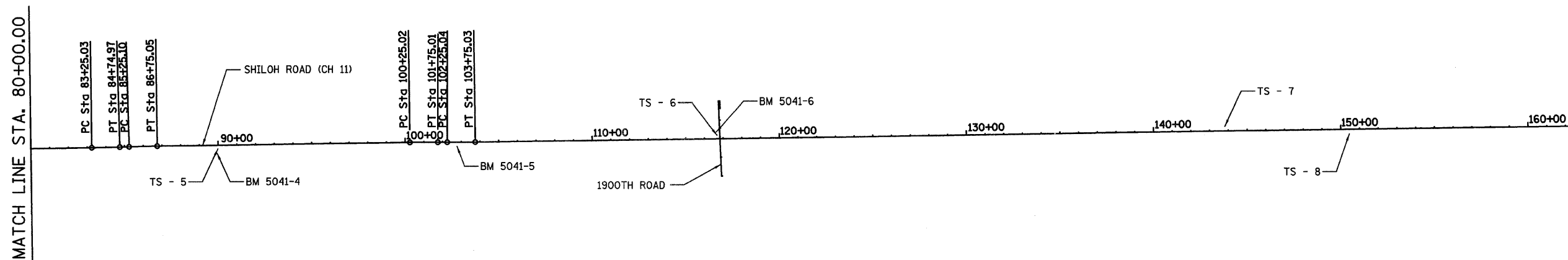
TS - 6  
 STA 116+67.29  
 O/S 18.99' LT  
 N 1,121,950.779  
 E 1,118,794.483  
 ELEV 665.01



TS - 7  
 STA 143+81.51  
 O/S 24.74' LT  
 N 1,124,664.695  
 E 1,118,753.533  
 ELEV 663.10

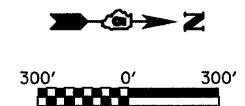


TS - 8  
 STA 150+45.58  
 O/S 24.74' RT  
 N 1,125,329.355  
 E 1,118,794.404  
 ELEV 661.33



BM#	STA	O/S	ELEV	DESCRIPTION
5041-4	89+94	42.7' RT	665.34	CHISELED SQUARE ON EAST END OF SOUTH WING WALL ON DOUBLE BOX CULVERT FOR FIELD ENTRANCE ON EAST SIDE OF CH 11, 1.5 MILES NORTH OF CH 8.
5041-5	102+77	22.0' RT	665.16	CHISELED SQUARE ON EAST HEADWALL OF 48" RCP ACROSS CH 11, 1.75 MILES NORTH OF CH 8.
5041-6	116+63	36.0' LT	667.40	TOP OF RIGHT OF WAY MARKER, SOUTHWEST CORNER 1900 NORTH & 600 EAST, 2 MILES NORTH OF CH 8.

PROP. CURVE CH11-1	PROP. CURVE CH11-2	PROP. CURVE CH11-3	PROP. CURVE CH11-4
PI STA. = 84+00.00	PI STA. = 86+00.08	PI STA. = 101+00.02	PI STA. = 103+00.04
Δ = 0° 51' 33" (LT)	Δ = 0° 51' 33" (RT)	Δ = 0° 51' 34" (RT)	Δ = 0° 51' 34" (LT)
D = 0° 34' 23"	D = 0° 34' 23"	D = 0° 34' 23"	D = 0° 34' 23"
R = 10,000.00'	R = 10,000.00'	R = 10,000.00'	R = 10,000.00'
T = 74.97'	T = 74.97'	T = 75.00'	T = 75.00'
L = 149.95'	L = 149.95'	L = 149.99'	L = 149.99'
E = 0.28'	E = 0.28'	E = 0.28'	E = 0.28'
⊙ = NC	⊙ = NC	⊙ = NC	⊙ = NC
P.C. STA. = 83+25.03	P.C. STA. = 85+25.10	P.C. STA. = 100+25.02	P.C. STA. = 102+25.04
P.T. STA. = 84+74.97	P.T. STA. = 86+75.05	P.T. STA. = 101+75.01	P.T. STA. = 103+75.03



REVISIONS		SHILOH ROAD (CH 11) EDGAR COUNTY, ILLINOIS		DRWN BY DATE
No.	DATE	INITIALS		FLK 7/07
1				CHECKED BY DATE
2				CAS 7/07
3				BOOK NUMBER
4				469
5				PROJECT No.
6				5245
7				SHEET No.
8				
9				
10				

**HOMER L. CHASTAIN & ASSOCIATES, LLP**  
 CONSULTING ENGINEERS  
 184-00187

DECATUR CHICAGO  
 (317) 422-8844 (773) 714-0060  
 ROCKFORD  
 (815) 489-0050