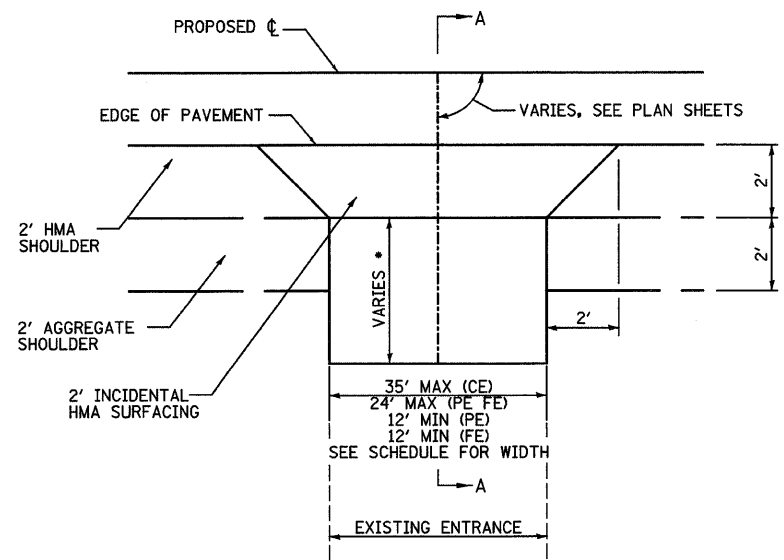


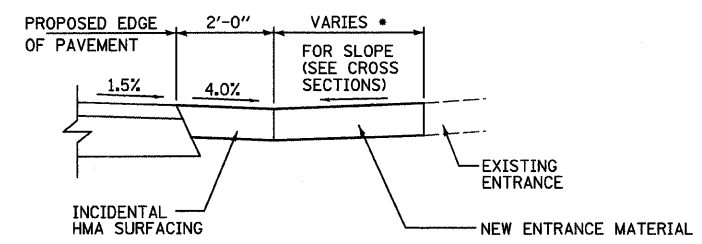
ROUTE NO.	SECTION	COUNTY	TOTAL SHEETS	SHEET NO.
CH 11	*	EDGAR	160	42
FED. ROAD DIST. NO. 5		ILLINOIS	PROJECT	

* 05-00092-01-PV



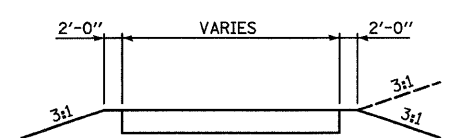
TYPICAL COMMERCIAL, PRIVATE OR FIELD ENTRANCE
ADJACENT TO BITUMINOUS SHOULDERS

SHILOH ROAD (CH 11)			EXISTING MATERIAL	PROPOSED	
STATION	OFFSET	TYPE		WIDTH	LENGTH
12+82	LT	PE	AGG	16	25
14+50	LT	PE	AGG	16	24
17+04	LT	FE	GRASS	20	26
29+95	LT	FE	GRASS	22	16
30+18	RT	FE	GRASS	24	24
36+73	RT	FE	GRASS	20	33
42+32	LT	FE	GRASS	20	23
50+11	LT	FE	GRASS	20	19
56+42	RT	PE	AGG	20	22
76+63	LT	FE	GRASS	16	28
77+98	LT	PE	AGG	24	20
78+31	LT	PE	AGG	24	20
79+80	LT	PE	AGG	20	13
82+08	LT	CE	AGG	35	19
82+87	LT	CE	AGG	35	19
84+40	LT	PE	AGG	24	19
86+18	LT	PE	AGG	24	22
90+10	LT	FE	GRASS	24	25
90+13	RT	FE	GRASS	24	20
103+32	LT	FE	GRASS	20	39
110+21	LT	FE	GRASS	20	25
115+31	RT	PE	AGG	20	19
115+41	LT	FE	GRASS	20	19
129+95	RT	FE	GRASS	16	19



SECTION A-A

HORACE BROXTON ROAD (CH 8)			EXISTING MATERIAL	PROPOSED	
STATION	OFFSET	TYPE		WIDTH	LENGTH
302+23	RT	CE	AGG	35	29
303+72	RT	PE	AGG	16	35
305+62	RT	PE	AGG	12	60
311+15	LT	FE	GRASS	20	25



TYPICAL ENTRANCE SECTION

TYPE OF ENTRANCE	EXISTING MATERIAL	NEW APRON MATERIAL		
		INCIDENTAL HOT MIX ASPHALT SURFACING (6")	INCIDENTAL HOT MIX ASPHALT SURFACING (6")	AGGREGATE SURFACE COURSE TYPE B (6")
FIELD	GRASS	X		X
	AGGREGATE	X		X
PRIVATE COMMERCIAL	O&C/BITUMINOUS	X	X	
	AGGREGATE	X		X

"X" DENOTES TYPE OF ENTRANCE MATERIALS TO BE CONSTRUCTED

- NOTES
- SEE ENTRANCE/SIDE ROAD SCHEDULE FOR WIDTH AND LENGTH
 - SEE PLANS AND SCHEDULE ABOVE FOR EXISTING SURFACE TYPE
 - SAW-CUT EXISTING PAVED ENTRANCES FULL-DEPTH.
 - FOR ENTRANCE QUANTITY, SEE SCHEDULES OF QUANTITIES

ENTRANCE DETAILS		
SHILOH ROAD (CH 11) EDGAR COUNTY, ILLINOIS		DRAWN BY: RFLK DATE: 7/07 CHECKED BY: CAS DATE: 7/07 BOOK NUMBER: 469 PROJECT No.: 5245 SHEET No.:
HOMER L. CHASTAIN & ASSOCIATES, LLP CONSULTING ENGINEERS 184-001897 DECATUR CHICAGO (317) 422-8544 (773) 714-0050 ROCKFORD (815) 489-0050		