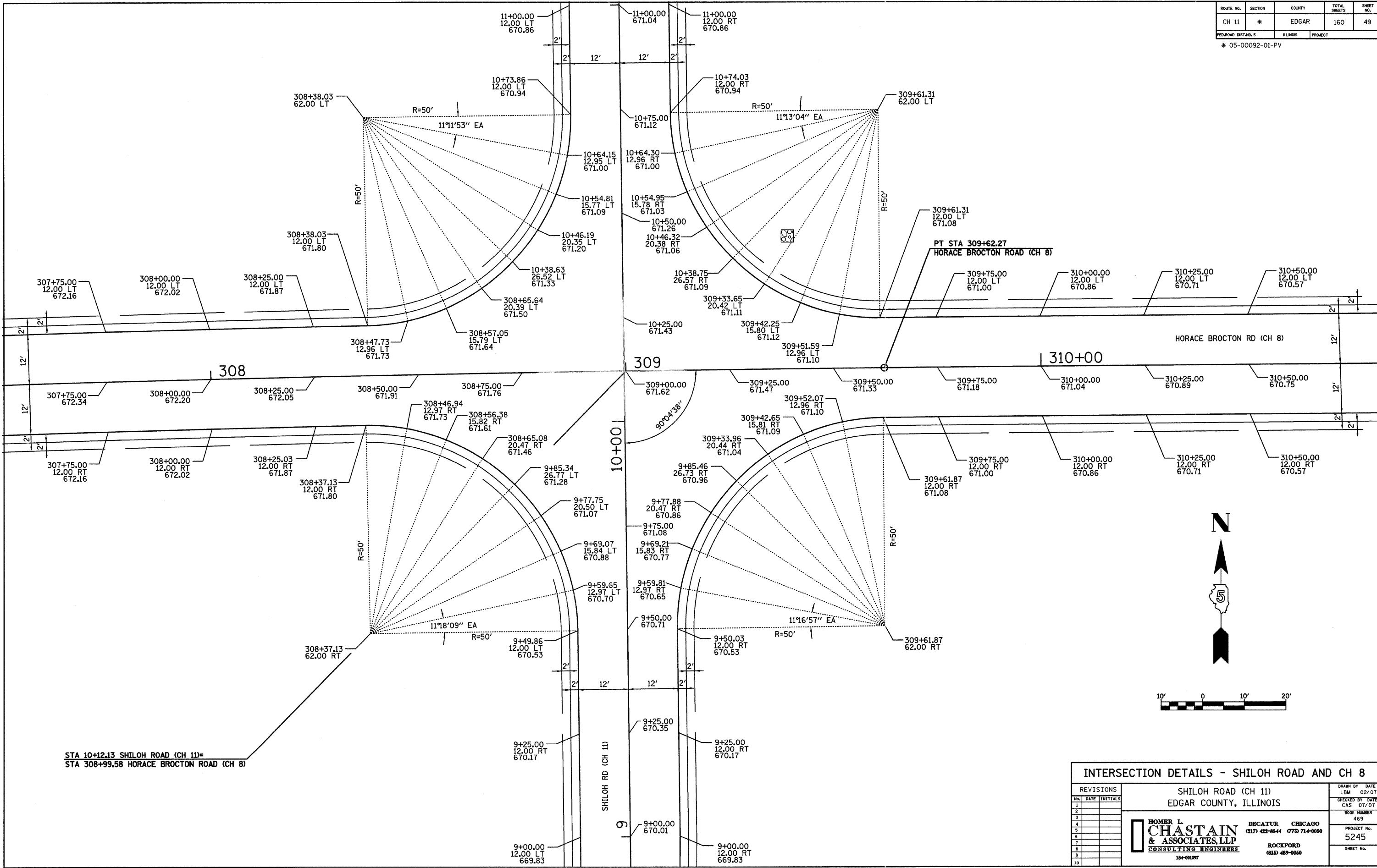


ROUTE NO.	SECTION	COUNTY	TOTAL SHEETS	SHEET NO.
CH 11	*	EDGAR	160	49

FED. ROAD DIST. NO. 5 ILLINOIS PROJECT
* 05-00092-01-PV



STA 10+42.13 SHILOH ROAD (CH 11)=
STA 308+99.58 HORACE BROCTON ROAD (CH 8)

REVISIONS			SHILOH ROAD (CH 11) EDGAR COUNTY, ILLINOIS		DRAWN BY DATE
1	DATE	INITIALS			LBM 02/07
2					CAS 07/07
3					BOOK NUMBER
4					469
5					PROJECT No.
6					5245
7					SHEET No.
8					
9					
10					

HOMER L. CHASTAIN & ASSOCIATES, LLP
CONSULTING ENGINEERS
184-001377

DECATUR CHICAGO
(317) 422-8544 (773) 714-0050
ROCKFORD
(815) 489-0050