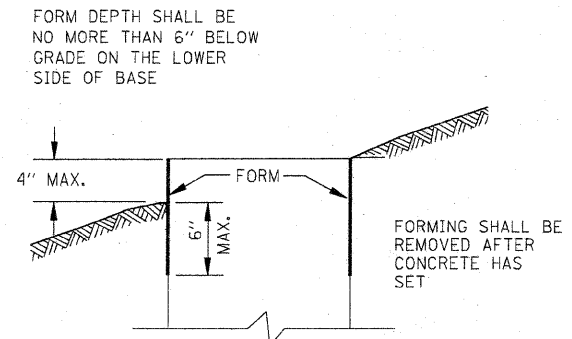
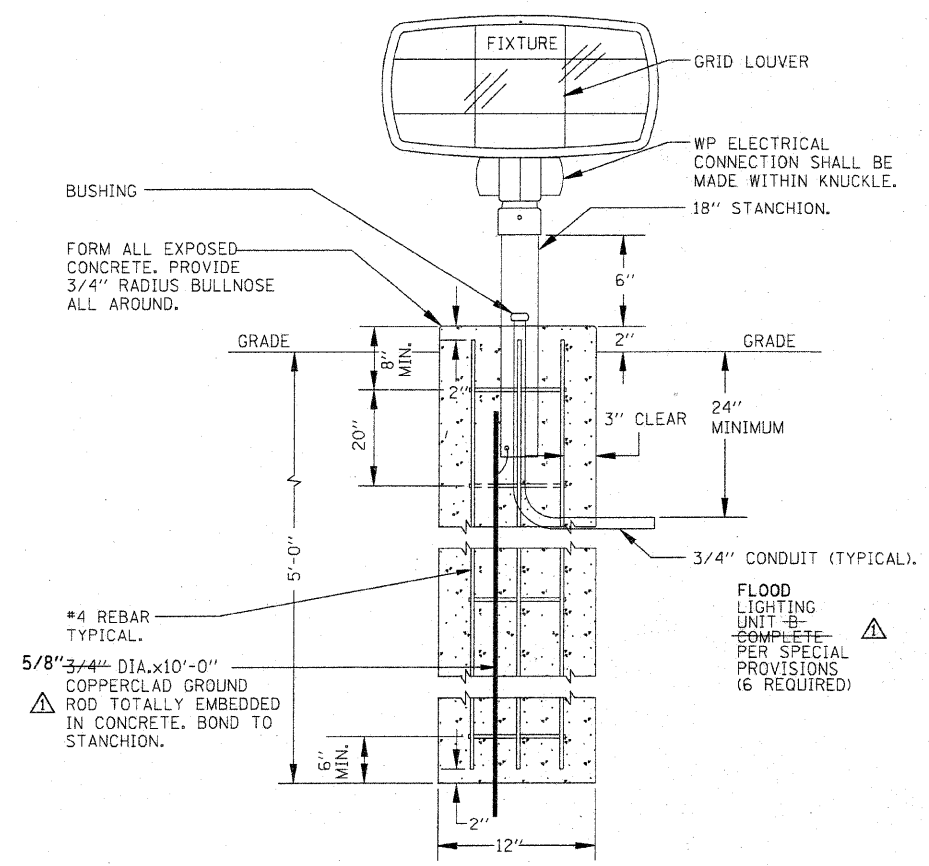


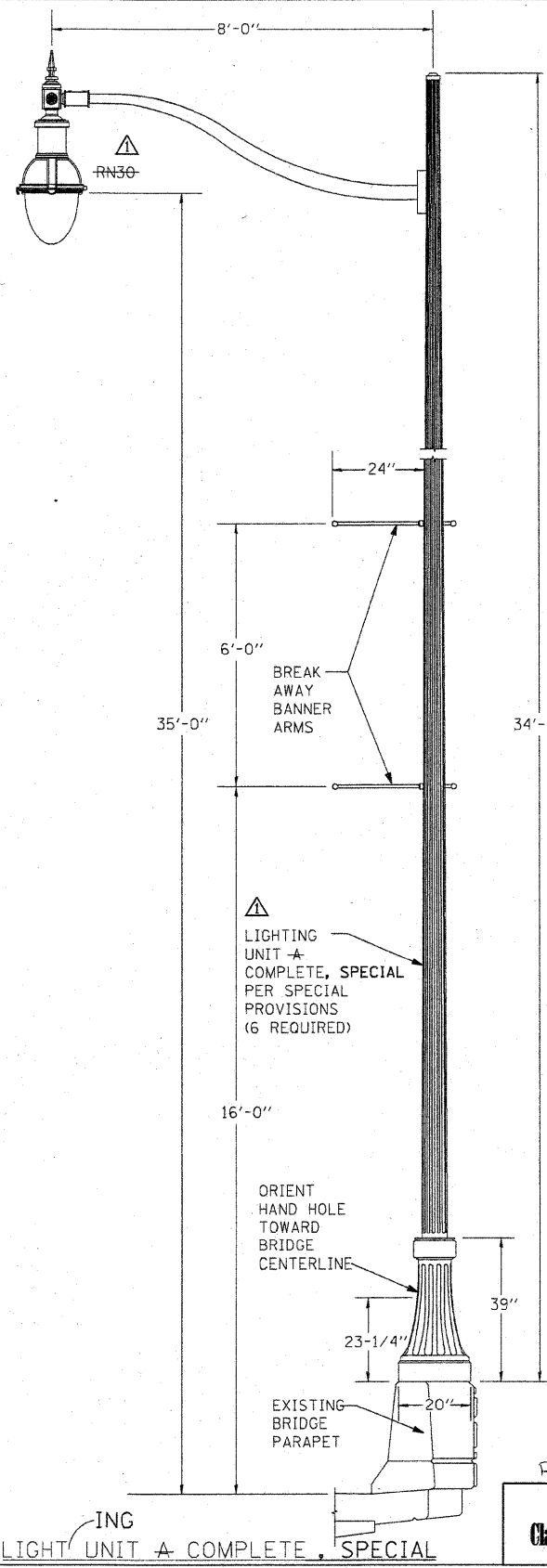
F.A.:	SECTION	COUNTY	TOTAL SHEETS	SHEET NO.
1-57	00-00374-03-LS	CHAMPAIGN	21	18
STA.		TO STA.		
FED. ROAD DIST. NO.	ILLINOIS	FED. AID PROJECT		
CONTRACT NO. 91382				



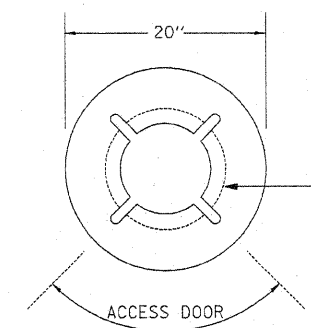
FORMING DETAIL



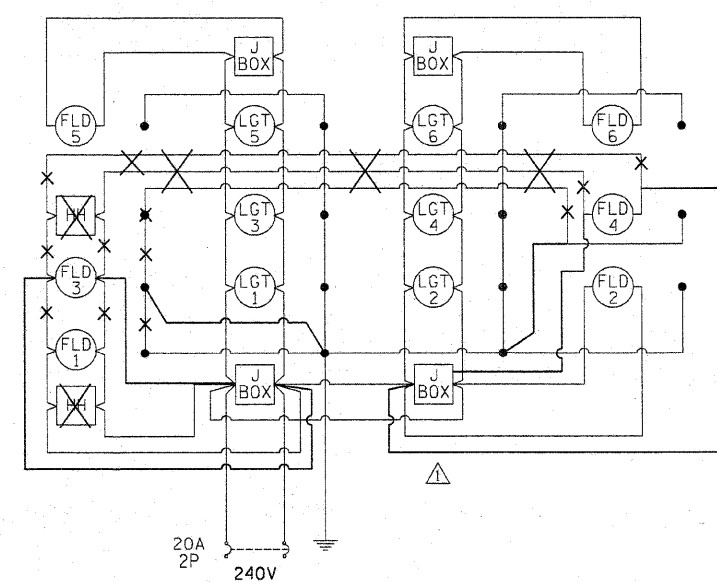
△ LIGHTING UNIT FLOOD LIGHT UNIT B, COMPLETE



△ LIGHTING UNIT A COMPLETE, SPECIAL



BASE ORIENTATION DIAGRAM



NOTES: △  
 PROVIDE CIRCUITING PER PLAN.  
 TWO POLE AND SURGE PROTECTOR  
 PROVIDE TWIN FUSE HOLDER IN EACH POLE BASE.  
 PROVIDE FUSES PER MANUFACTURER'S RECOMMENDATIONS.  
 THE STANDARD SPECIFICATIONS

REVISIONS	
NAME	DATE
RLH	3/18/08

ILLINOIS DEPARTMENT OF TRANSPORTATION  
**LIGHTING DETAILS**  
 SCALE: As Noted  
 DATE: 01/04/08  
 DRAWN BY: RS  
 CHECKED BY: MTP

Revised 3/28/08  
 DESIGN FIRM REGISTRATION  
 No. 184-000450  
 118 SOUTH CLINTON STREET  
 SUITE 600  
 CHICAGO, IL 60661  
 PHONE: 312.648.9800  
 FAX: 312.648.0204

P:\081350\plans\sheet\Lighting\_Sheet.dgn  
 3/27/2008