

ROUTE NO.	SECTION	COUNTY	TOTAL SHEETS	SHEET NO.
CH 5	*	MASON	12	2

SUMMARY OF QUANTITIES

* SEC. 05-00016-01-BR

RATES OF APPLICATION TABLE

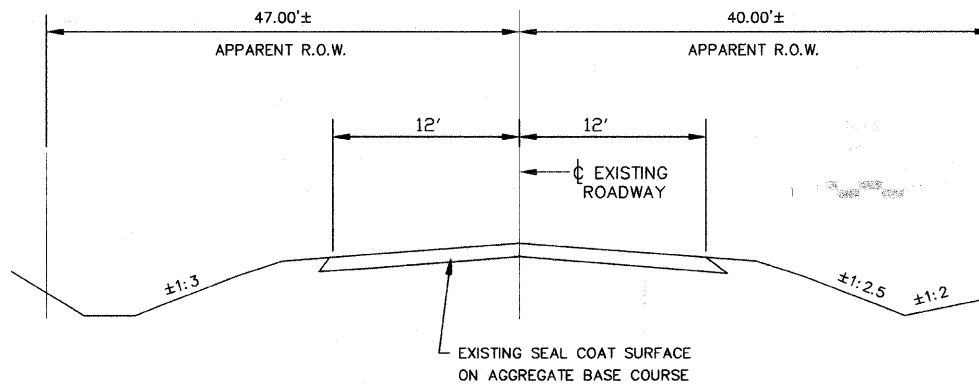
THE FOLLOWING APPLICATION RATES HAVE BEEN USED TO DETERMINE PLAN QUANTITIES:

BITUMINOUS MATERIALS (PRIME COAT)	0.1 GAL/SQ YD
PAVEMENT AGGREGATE	0.5 GAL/SQ YD
BITUMINOUS MATERIALS (COVER AND SEAL COATS)	0.3 GAL/SQ YD
SEAL COAT AGGREGATE	20 LBS/SQ YD
COVER COAT AGGREGATE	20 LBS/SQ YD
AGGREGATE BASES	2.05 TON/CU YD
RIPRAP	1.50 TONS/CU YD

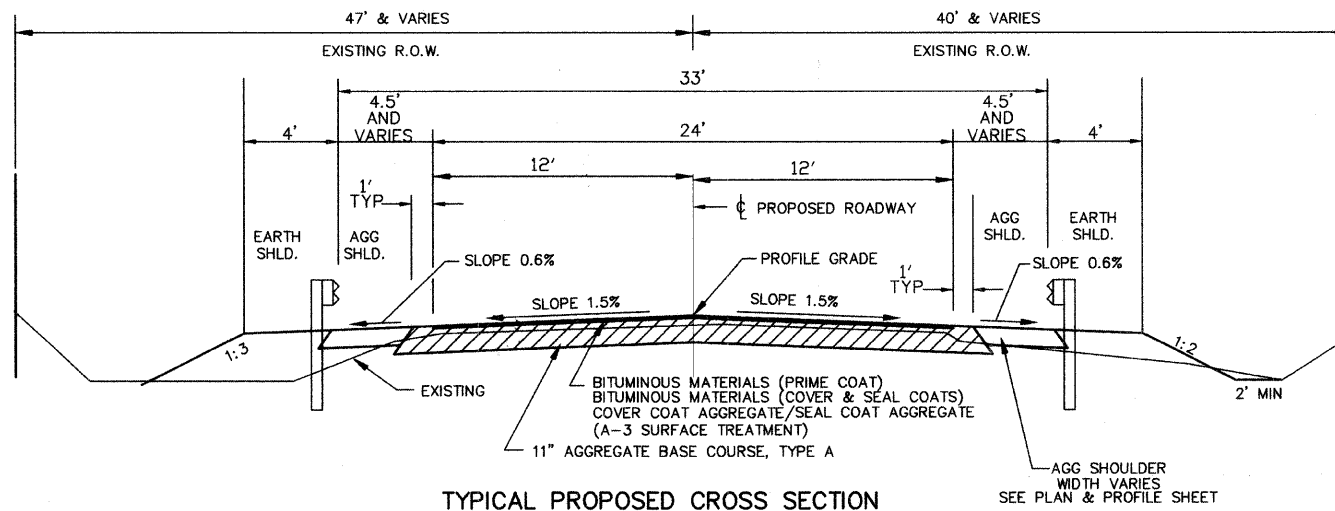
GENERAL NOTES & COMMITMENTS

WHERE SECTION OR SUBSECTION MONUMENTS ARE ENCOUNTERED THE ENGINEER SHALL BE NOTIFIED BEFORE SUCH MONUMENTS ARE MOVED. THE CONTRACTOR SHALL PROTECT AND CAREFULLY PRESERVE ALL PROPERTY MARKS AND MONUMENTS UNTIL THE OWNER OR AN AUTHORIZED SURVEYOR OR AGENT HAS WITNESSED OR OTHERWISE REFERENCED THEIR LOCATION

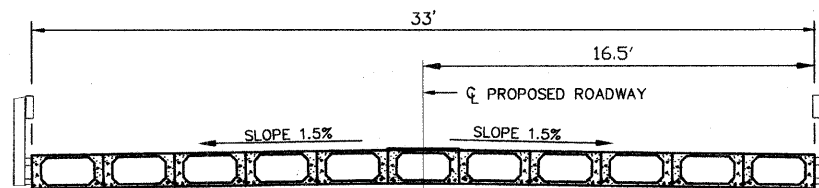
THE CONTRACTOR SHALL BE RESPONSIBLE FOR DETERMINING THE LOCATION AND ELEVATION OF ALL EXISTING UTILITIES AND TO NOTIFY ALL UTILITY COMPANIES PRIOR TO BEGINNING OF CONSTRUCTION. THIS SHALL BE INCIDENTAL TO THE CONTRACT.



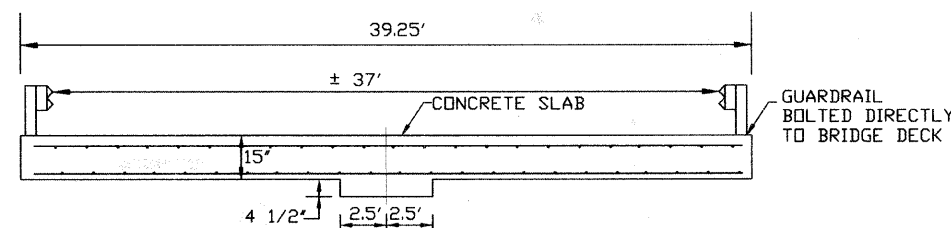
TYPICAL EXISTING CROSS SECTION - CH 5
LOOKING UPSTATION



TYPICAL PROPOSED CROSS SECTION
STA. 43+12.00 TO STA. 45+00.00
(BRIDGE OMISSION: STA. 43+29.25 TO STA. 43+70.75)
(NEW A3 SURFACE TREATMENT ONLY: STA. 43+00.00 TO STA. 43+12.00)
LOOKING UPSTATION



TYPICAL PROPOSED CROSS SECTION
BRIDGE - STA. 43+29.25 TO STA. 43+70.75



TYPICAL CROSS SECTION EXISTING THRU BRIDGE

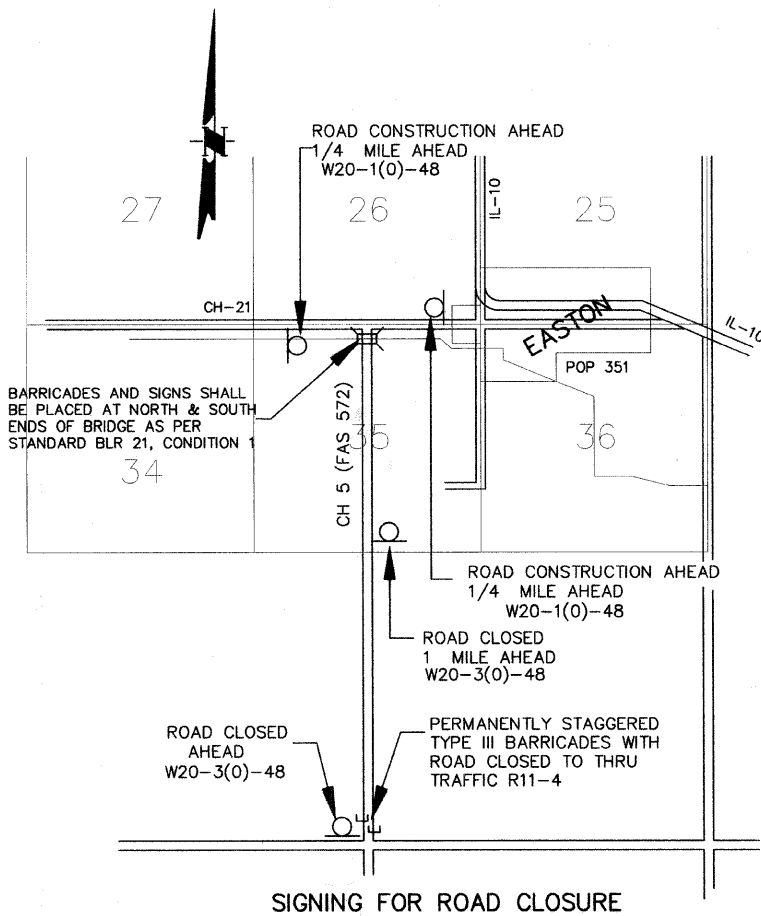
SUMMARY OF QUANTITIES

ITEM	CODE NUM	UNIT	QUANTITY
EARTH EXCAVATION	20200100	CU YD	115
CHANNEL EXCAVATION	20300100	CU YD	177
* FURNISHED EXCAVATION	20400800	CU YD	67
* SEEDING, CLASS 2 (SPECIAL)	25001000	ACRE	0.3
* RIPRAP, SPECIAL	28101700	TON	260
AGGREGATE BASE COURSE, TYPE A	35100100	TON	287
BITUMINOUS MATERIALS (PRIME COAT)	40300100	GALLON	355
BITUMINOUS MATERIALS (COVER AND SEAL COATS)	40300300	GALLON	640
COVER COAT AGGREGATE	40300500	TON	14
SEAL COAT AGGREGATE	40300600	TON	7
AGGREGATE SHOULDERS, TYPE B	48101200	TON	77
* REMOVAL OF EXISTING STRUCTURES	50100100	EACH	1
STRUCTURE EXCAVATION	50200100	CU YD	41
CONCRETE STRUCTURES	50300225	CU YD	22.0
CONCRETE ENCASEMENT	50300280	CU YD	3.2
PRECAST PRESTRESSED CONCRETE DECK BEAMS (17" DEPTH)	50400305	SQ FT	1320
* REINFORCEMENT BARS	50800105	POUND	2860
STEEL RAILING, TYPE S1	50900205	FOOT	80
FURNISHING METAL SHELL PILES 12"	51201005	FOOT	410
DRIVING PILES	51202305	FOOT	410
TEST PILE METAL SHELLS	51203200	EACH	1
NAME PLATES	51500100	EACH	1
Δ TRAFFIC BARRIER TERMINAL, TYPE 5A	63100075	EACH	2
Δ TRAFFIC BARRIER TERMINAL, TYPE 1, SPECIAL (TANGENT)	63100167	EACH	2
Δ * TRAFFIC BARRIER TERMINAL, TYPE 5A (SPECIAL)	63100205	EACH	2
Δ * STEEL PLATE BEAM GUARDRAIL (SHORT RADIUS)	63300725	FOOT	75
MOBILIZATION	67100100	L SUM	1
* TRAFFIC CONTROL AND PROTECTION (SPECIAL)	70101800	L SUM	1
Δ * GUARDRAIL MARKERS, TYPE A	78200410	EACH	10
Δ * TERMINAL MARKER - DIRECT APPLIED	78201000	EACH	2
Δ * TRAFFIC BARRIER TERMINAL, TYPE 1	LR631020	EACH	2

* SEE SPECIAL PROVISIONS
Δ SPECIALTY ITEMS

CONSTRUCTION TYPE CODE: X080-2A

NOTE:
THE PAY ITEM DRIVING PILES INCLUDES THE COST OF FILLING THOSE PILES.



SIGNING FOR ROAD CLOSURE

SUMMARY OF QUANTITIES & TYPICAL SECTIONS

CH 5 (FAS 572)
OVER SAMUELS DITCH

SEC. 05-00016-01-BR
MASON COUNTY
STATION 43+50.00