

F.A. RTE.	SECTION	COUNTY	TOTAL SHEETS	SHEET NO.
99-P4003-01-BT	ADAMS	92	19	
STA.	TO STA.			

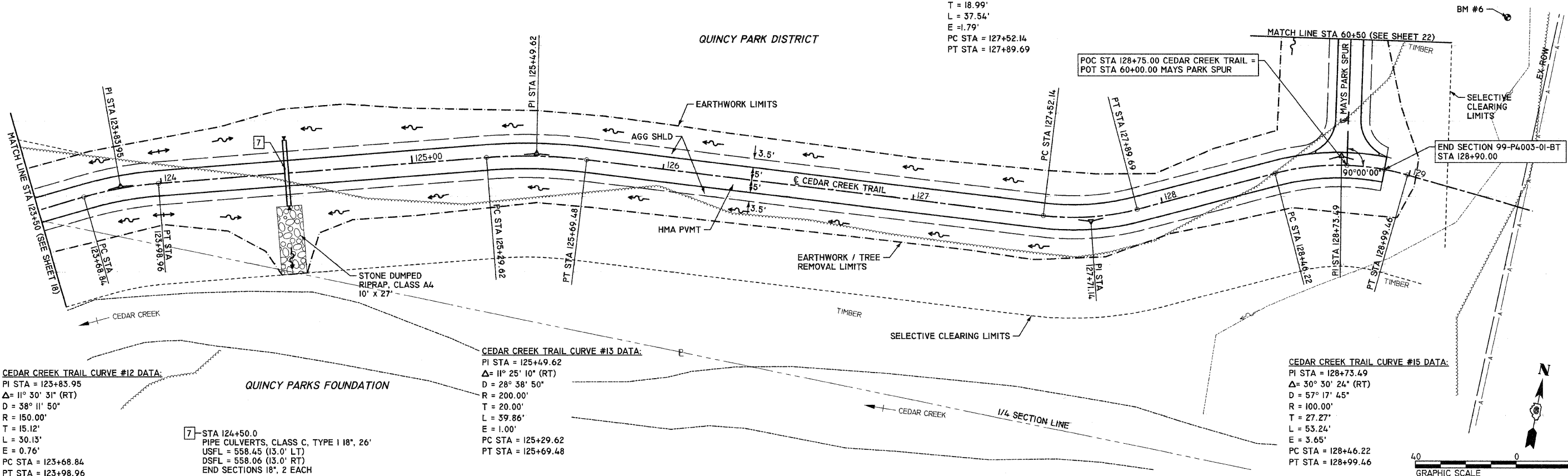
CEDAR CREEK TRAIL CURVE #14 DATA:
 PI STA = 127+71.14
 $\Delta = 21^\circ 30' 35" (LT)$
 $D = 57^\circ 17' 45"$
 $R = 100.00'$
 $T = 18.99'$
 $L = 37.54'$
 $E = -1.79'$
 PC STA = 127+52.14
 PT STA = 127+89.69

BENCHMARK #6
 RR SPIKE IN HEDGE STUMP
 STA 129+20.5 71.0' LT
 ELEV = 564.74

SEC 25, T15S, R9W, 4TH PM

QUINCY PARK DISTRICT

QUINCY PARKS FOUNDATION

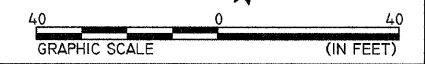


CEDAR CREEK TRAIL CURVE #12 DATA:
 PI STA = 123+83.95
 $\Delta = 11^\circ 30' 31" (RT)$
 $D = 38^\circ 11' 50"$
 $R = 150.00'$
 $T = 15.12'$
 $L = 30.13'$
 $E = 0.76'$
 PC STA = 123+68.84
 PT STA = 123+98.96

CEDAR CREEK TRAIL CURVE #13 DATA:
 PI STA = 125+49.62
 $\Delta = 11^\circ 25' 10" (RT)$
 $D = 28^\circ 38' 50"$
 $R = 200.00'$
 $T = 20.00'$
 $L = 39.86'$
 $E = 1.00'$
 PC STA = 125+29.62
 PT STA = 125+69.48

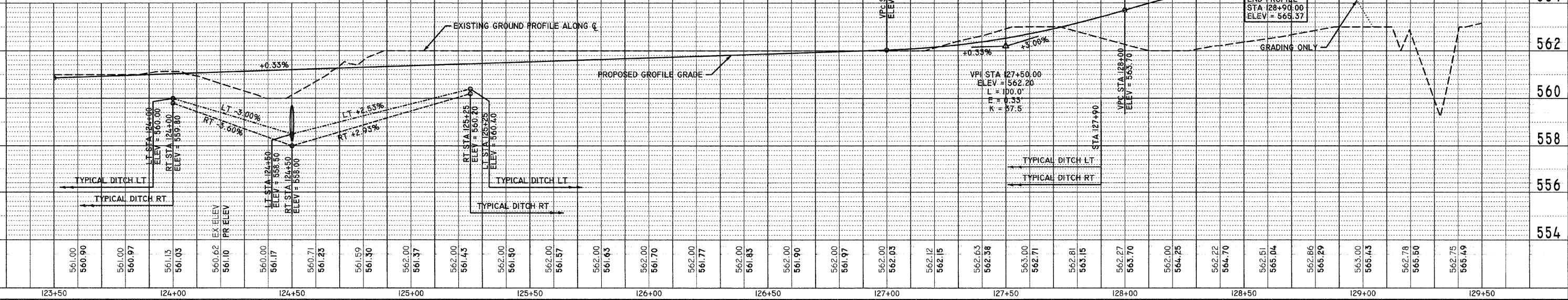
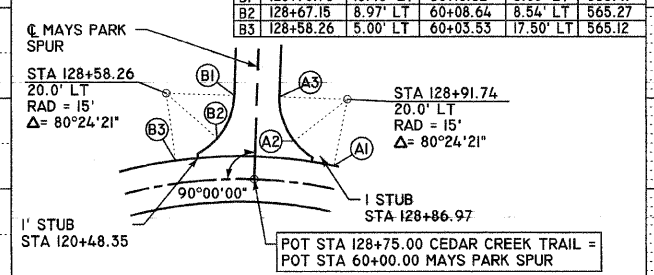
CEDAR CREEK TRAIL CURVE #15 DATA:
 PI STA = 128+73.49
 $\Delta = 30^\circ 30' 24" (RT)$
 $D = 57^\circ 17' 45"$
 $R = 100.00'$
 $T = 27.27'$
 $L = 53.24'$
 $E = 3.65'$
 PC STA = 128+46.22
 PT STA = 128+99.46

7 - STA 124+50.0
 PIPE CULVERTS, CLASS C, TYPE I 18", 26"
 USFL = 558.45 (13.0' LT)
 DSFL = 558.06 (13.0' RT)
 END SECTIONS 18", 2 EACH



INTERSECTION GEOMETRIC DETAIL

CD	CDAR CREEK TRAIL	MAYS PARK SPUR	ELEV
A1	128+91.74	5.00' LT	60+03.53 17.50' RT 565.48
A2	128+82.85	8.97' LT	60+08.64 8.54' RT 565.35
A3	128+79.22	18.43' LT	60+18.32 5.00' RT 565.21
B1	128+70.78	18.43' LT	60+18.32 5.00' LT 565.41
B2	128+67.15	8.97' LT	60+08.64 8.54' LT 565.27
B3	128+58.26	5.00' LT	60+03.53 17.50' LT 565.12



CEDAR CREEK TRAIL PLAN & PROFILE - STA 123+50 TO STA 129+50

PLAN

DATE	
BY	
CHECKED	
DATE	
NO.	

PROFILE

DATE	
BY	
CHECKED	
DATE	
NO.	

PLOT DATE = 1/15/2008
 FILE NAME = P:\PROJECTS\2007\123\CONSTR\PLANS\0\PPROF05.dwg
 PLOT SCALE = 20.0000' / 1" / IN.
 USER NAME = SBB