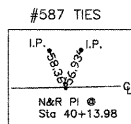
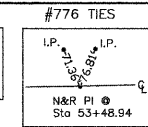


CUT / FILL ANALYSIS
 Sta 26+00 to Sta 52+00
 Total Fill 4114 CY
 Total Cut 4994 CY
 Cut/Fill Ratio=1.21

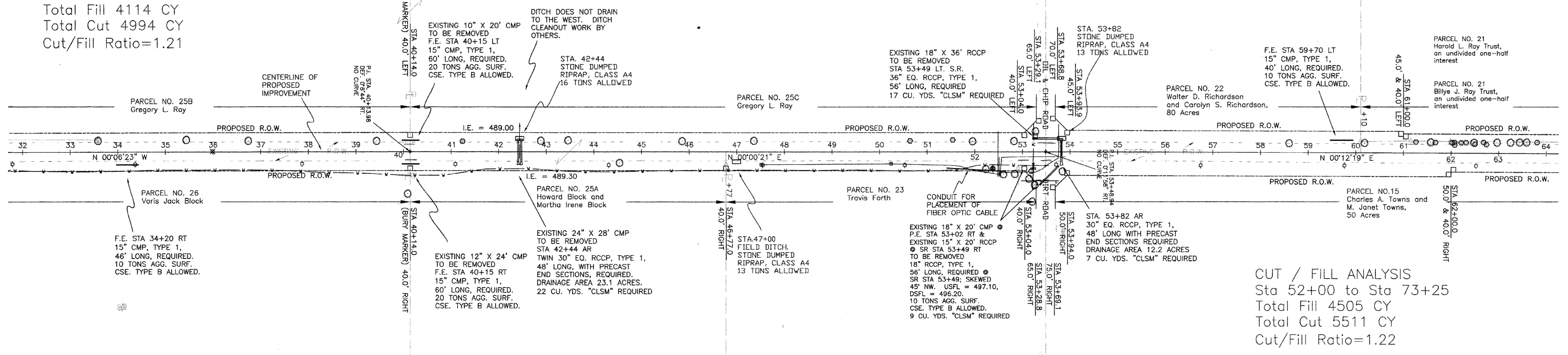
BM 4 = TOP OF IP
 @ STA 39+70.70
 O/S 39.18' LT
 ELEV. = 492.21



BM 5 = TOP OF IP
 @ STA 52+88.8
 O/S 38.35' LT
 ELEV. = 499.90



SECTION	COUNTY	TOTAL SHEETS	SHEET NO.
04-00111-01-FP	WAYNE	21	5
FAS ROUTE 2817			
ILLINOIS PROJECT SR-2817(101)			
CONTRACT NO. 95416			



CUT / FILL ANALYSIS
 Sta 52+00 to Sta 73+25
 Total Fill 4505 CY
 Total Cut 5511 CY
 Cut/Fill Ratio=1.22

