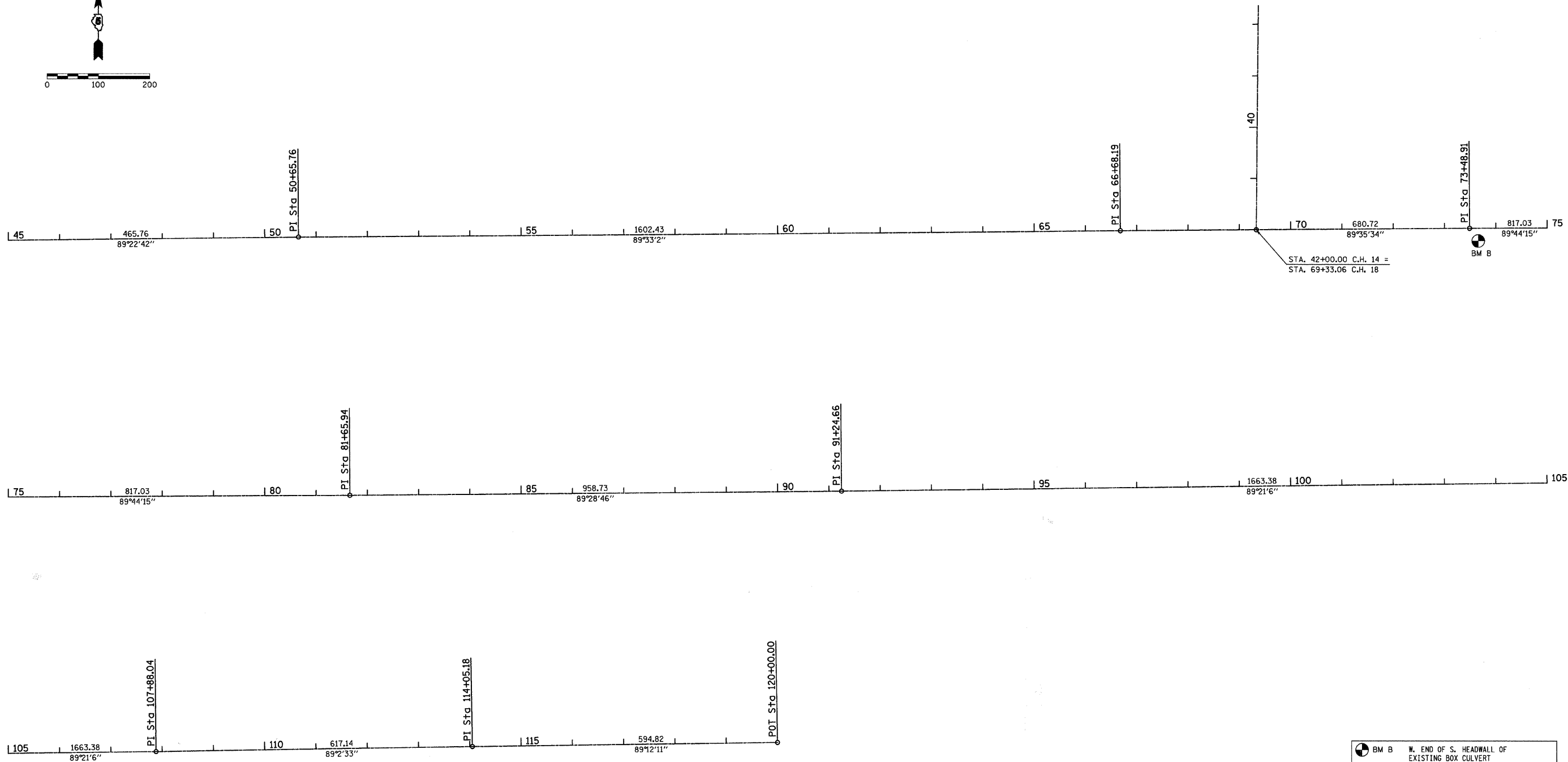
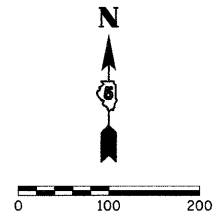


F.A.S. RTE.	SECTION	COUNTY	TOTAL SHEETS	SHEET NO.
642	00-00127-00-WR	COLES	91	19
STA.		TO STA.		
FED. ROAD DIST. NO.		ILLINOIS	FED. AID PROJECT	



BM B W. END OF S. HEADWALL OF EXISTING BOX CULVERT STA. 73+51, 67' RT ELEV. = 660.11

REVISIONS	
NAME	DATE

ILLINOIS DEPARTMENT OF TRANSPORTATION  
**CENTERLINE GEOMETRICS**

SCALE: VERT. 1" = 100'  
 HORIZ. 1" = 100'  
 DATE 02/28/2008  
 DRAWN BY SJF  
 CHECKED BY MED

TUG PROJ. #3103027  
 ...\\whitefopping\geom\TRC-V7.dgn