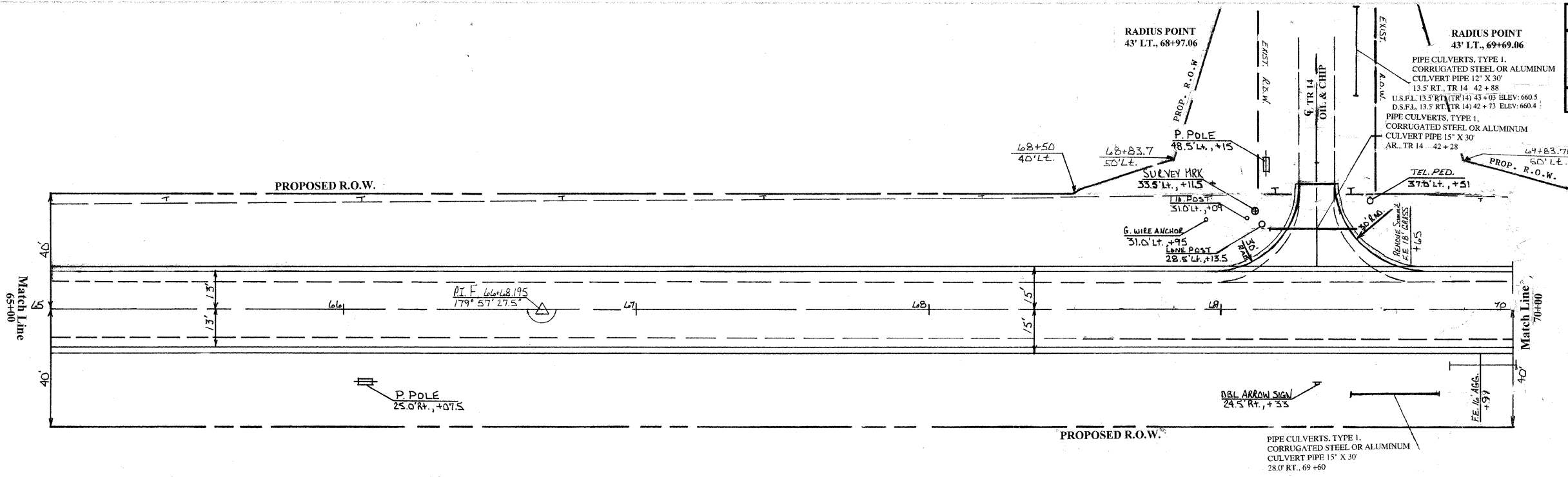


U.S.F.L. 14.75' LT. (TR 14) 42+28 ELEV: 660.2  
 D.S.F.L. 15.55' RT. (TR 14) 42+28 ELEV: 660.0  
 2 METAL END SECTIONS, 15'



**CONTROLLED LOW STRENGTH MATERIAL**

STATION	CU YD
TR 14 42+28	6.0

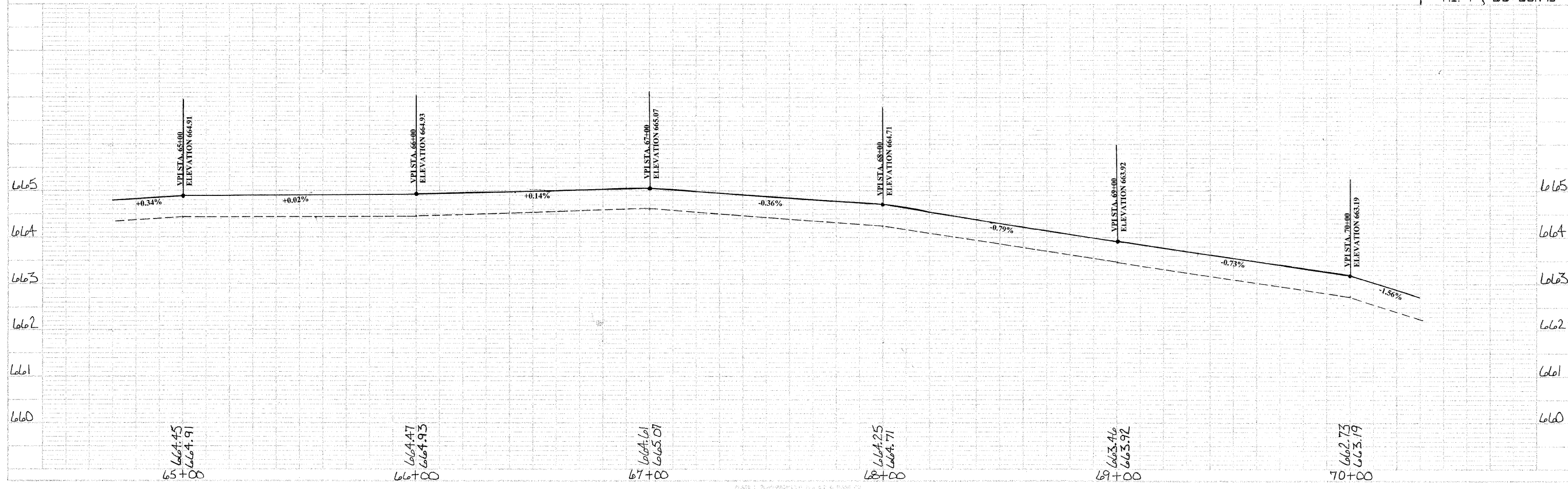
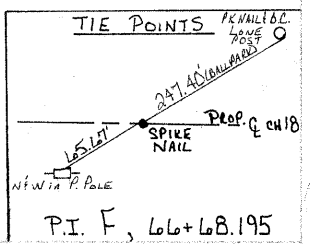
**REMOVE EXISTING CULVERTS**  
 RT. 69+91 LEACH  
 PAGE

**PORTLAND CEMENT CONCRETE PAVEMENT #**  
 TR 14 31.1 SQ YD

**PORTLAND CEMENT CONCRETE OVERLAY 5 1/2**  
 9.5' LT. TO 9.5' RT. 65+00 TO 70+00  
 9.5' RT. TO 13 RT. 65+00 TO 70+00  
 PAGE TOTAL 1055.6 SQ YD

**PORTLAND CEMENT CONCRETE PAVEMENT # (WIDENING)**  
 9.5' LT. TO 13 LT. 65+00 TO 70+00  
 9.5' RT. TO 13 RT. 65+00 TO 70+00  
 PAGE TOTAL 388.9 SQ YD

**AGGREGATE SHOULDERS, TYPE B**  
 13' LT. TO 15 LT. 65+00 TO 68+96  
 12' LT. TO 15 LT. 69+69 TO 70+00  
 13' RT. TO 15 RT. 65+00 TO 70+00  
 TR 14 - RADII ONLY  
 PAGE TOTAL 78 TON



PROJECT: CH 18 / FAS 642  
 DRAWING NO: 18-00127-00-WR-30  
 DATE: 11/15/11  
 DESIGNED BY: [Name]  
 CHECKED BY: [Name]  
 IN CHARGE: [Name]

PROJECT: CH 18 / FAS 642  
 DRAWING NO: 18-00127-00-WR-30  
 DATE: 11/15/11  
 DESIGNED BY: [Name]  
 CHECKED BY: [Name]  
 IN CHARGE: [Name]