

PORTLAND CEMENT CONCRETE OVERLAY 3"  
 9.5' LT. TO 9.5' RT., 70+00 TO 75+00  
 PAGE TOTAL 1055.6 SQ YD

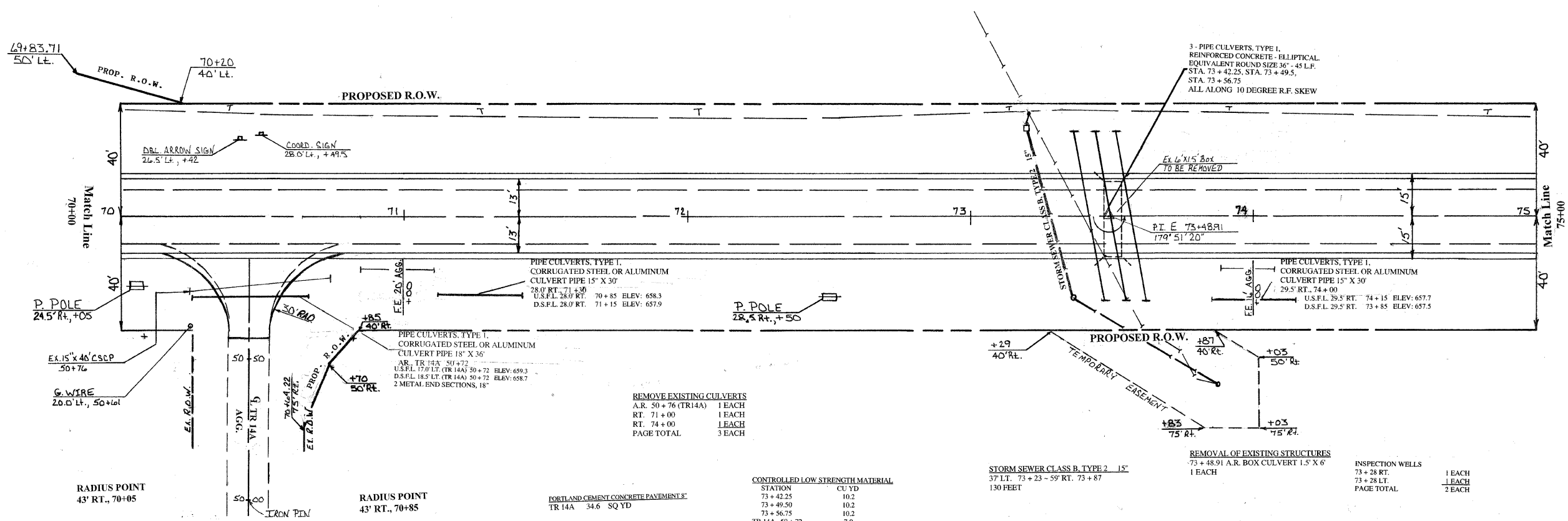
PORTLAND CEMENT CONCRETE PAVEMENT 2" (WIDENING)  
 9.5' LT. TO 13' LT., 70+00 TO 75+00  
 9.5' RT. TO 13' RT., 70+00 TO 75+00  
 PAGE TOTAL 388.9 SQ YD

AGGREGATE SHOULDERS, TYPE B  
 13' LT. TO 15' LT., 70+00 TO 75+00  
 13' RT. TO 15' RT., 70+79 TO 75+00  
 TR 14A - RADIUS ONLY  
 PAGE TOTAL 77 TON

PIPE CULVERTS, TYPE I,  
 REINFORCED CONCRETE - ELLIPTICAL,  
 EQUIVALENT ROUND SIZE 36" - 45' L.F.  
 U.S.F.L. 22.50' RT. 73+42.25 ELEV: 657.4  
 D.S.F.L. 22.50' LT. 73+42.25 ELEV: 657.1  
 2 PRC FLARED END SECTIONS,  
 EL EQRS 36"  
 \*ALONG 10 DEGREE R.F. SKEW

PIPE CULVERTS, TYPE I,  
 REINFORCED CONCRETE - ELLIPTICAL,  
 EQUIVALENT ROUND SIZE 36" - 45' L.F.  
 U.S.F.L. 22.50' RT. 73+49.50 ELEV: 657.4  
 D.S.F.L. 22.50' LT. 73+49.50 ELEV: 657.1  
 2 PRC FLARED END SECTIONS,  
 EL EQRS 36"  
 \*ALONG 10 DEGREE R.F. SKEW

PIPE CULVERTS, TYPE I,  
 REINFORCED CONCRETE - ELLIPTICAL,  
 EQUIVALENT ROUND SIZE 36" - 45' L.F.  
 U.S.F.L. 22.50' RT. 73+56.75 ELEV: 657.4  
 D.S.F.L. 22.50' LT. 73+56.75 ELEV: 657.1  
 2 PRC FLARED END SECTIONS,  
 EL EQRS 36"  
 \*ALONG 10 DEGREE R.F. SKEW U.S.F.L.



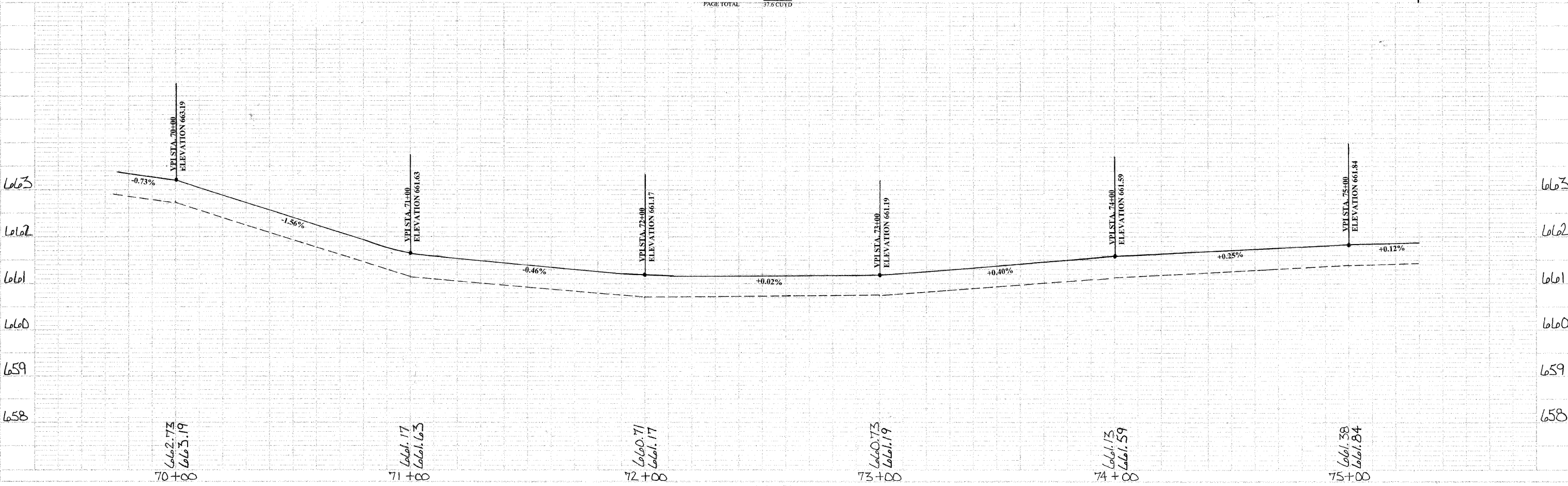
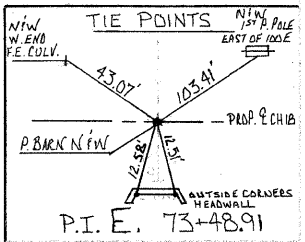
REMOVE EXISTING CULVERTS  
 A.R. 50+76 (TR14A) 1 EACH  
 RT. 71+00 1 EACH  
 RT. 74+00 1 EACH  
 PAGE TOTAL 3 EACH

CONTROLLED LOW STRENGTH MATERIAL  
 STATION CU YD  
 73+42.25 10.2  
 73+49.50 10.2  
 73+56.75 10.2  
 TR 14A 50+72 7.0  
 PAGE TOTAL 37.6 CU YD

STORM SEWER CLASS B, TYPE 2 15"  
 37' LT. 73+23 - 59' RT. 73+87  
 130 FEET

REMOVAL OF EXISTING STRUCTURES  
 73+48.91 A.R. BOX CULVERT 1.5' X 6'  
 1 EACH

INSPECTION WELLS  
 73+28 RT.  
 73+28 LT.  
 PAGE TOTAL 2 EACH



PLAN

DATE	
BY	
CHECKED BY	
SCALE	
NOTES	

PROFILE

DATE	
BY	
CHECKED BY	
SCALE	
NOTES	