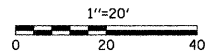
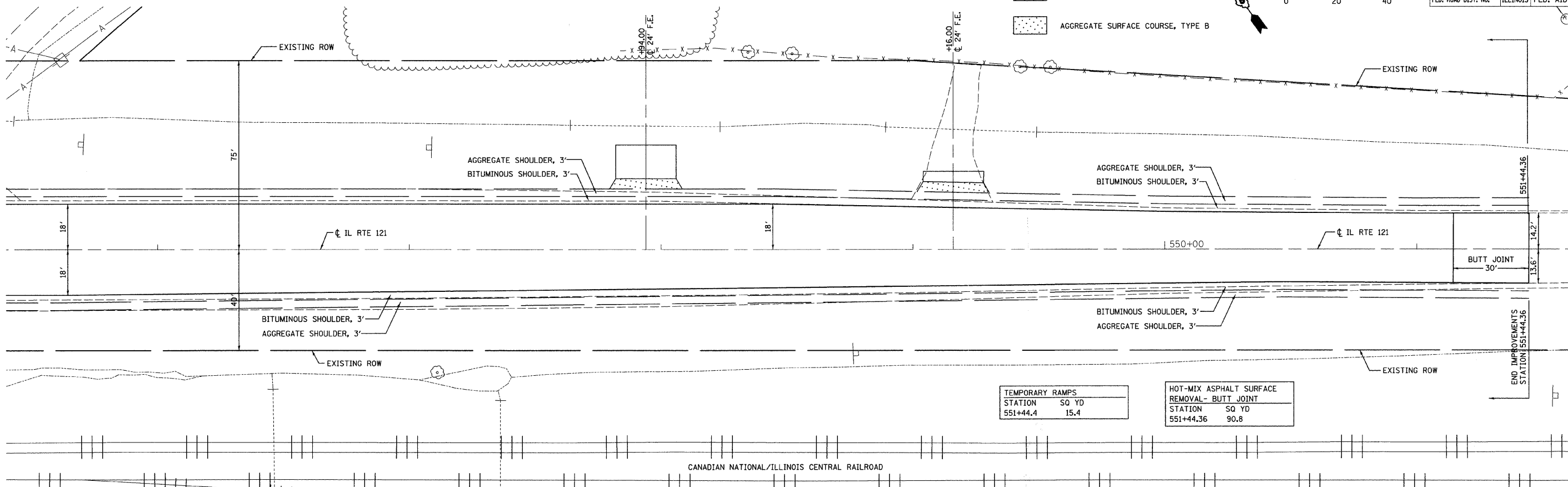


F.A.S. RTE.	SECTION	COUNTY	TOTAL SHEETS	SHEET NO.
642	00-00127-00-WR	COLES	91	43
STA. 545+40.00 TO STA. 551+44.36				
FED. ROAD DIST. NO.		ILLINOIS	FED. AID PROJECT	



- INCIDENTAL HOT-MIX ASPHALT SURFACING
- AGGREGATE SURFACE COURSE, TYPE B

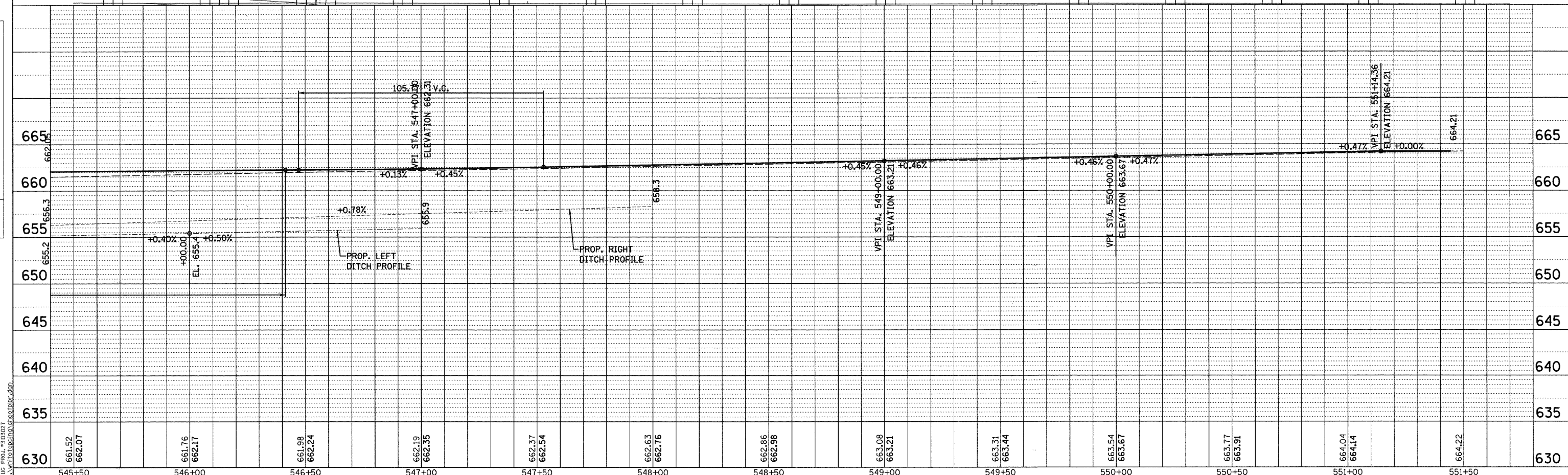


TEMPORARY RAMPS	
STATION	SQ YD
551+44.4	15.4

HOT-MIX ASPHALT SURFACE REMOVAL- BUTT JOINT	
STATION	SQ YD
551+44.36	90.8

PLAN	SURVEYED	DATE
	PLOTTED	
	CHECKED	
	BY	
	NO.	

PROFILE	SURVEYED	DATE
	PLOTTED	
	CHECKED	
	BY	
	NO.	



630	661.52	662.07	661.76	662.17	661.98	662.24	662.19	662.35	662.37	662.54	662.63	662.76	662.86	662.98	663.08	663.21	663.31	663.44	663.54	663.67	663.77	663.91	664.04	664.14	664.22	665
545+50			546+00		546+50		547+00		547+50		548+00		548+50		549+00		549+50		550+00		550+50		551+00		551+50	665