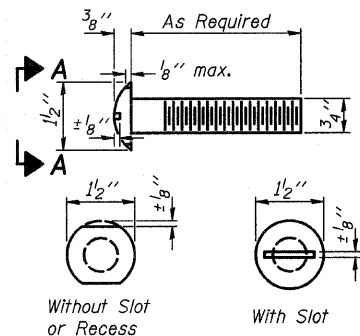


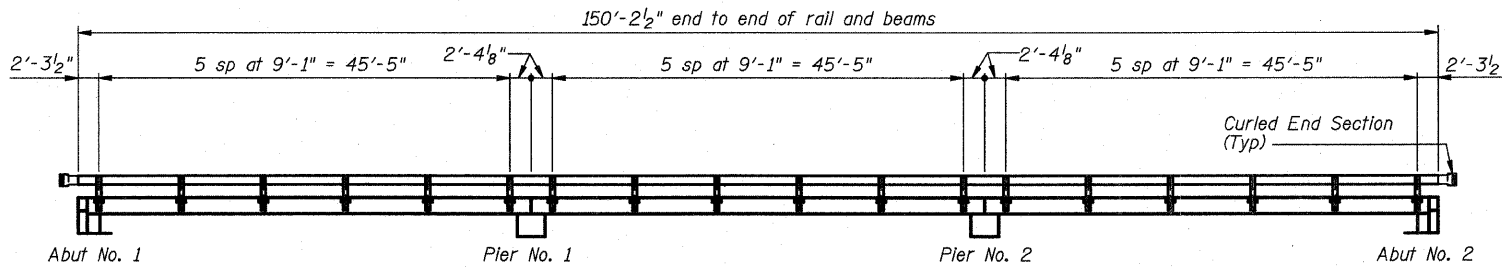
ROUTE NO.	SECTION	COUNTY	TOTAL SHEETS	SHEET NO.
TR 23	*	MACON	22	8
FED. ROAD DIST. NO.	ILLINOIS	PROJECT		
*05-04163-00-BR				

Sheet No. 3 of 7 Sheets

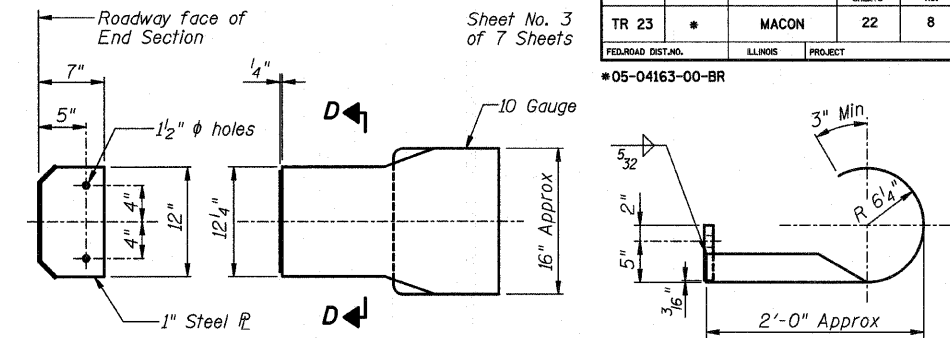


**VIEW A-A
ROUND HEAD BOLT**

** Whenever the lower insert assemblies interfere with strand locations, the #3 bars shall be cut and adjusted in order to allow raising or lowering of the lower inserts. Maximum adjustment not to exceed 1/2\"/>

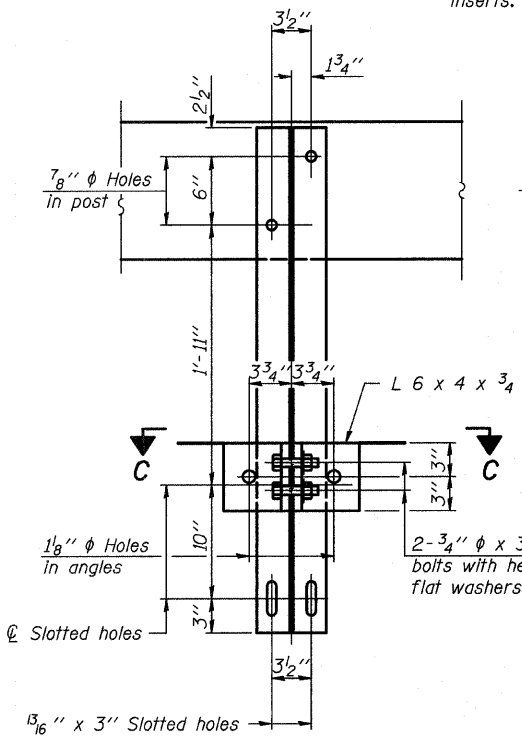


ELEVATION

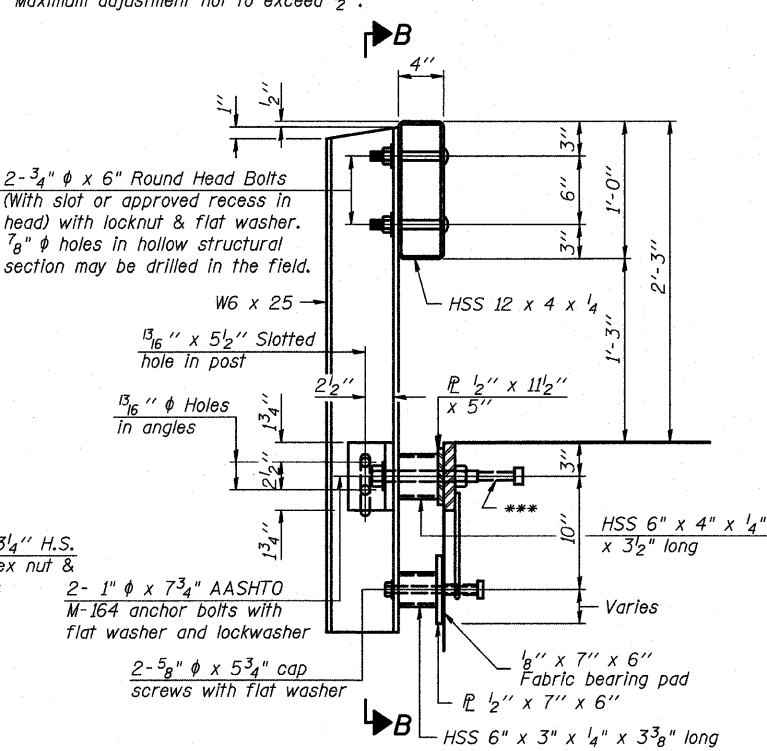


SECTION D-D

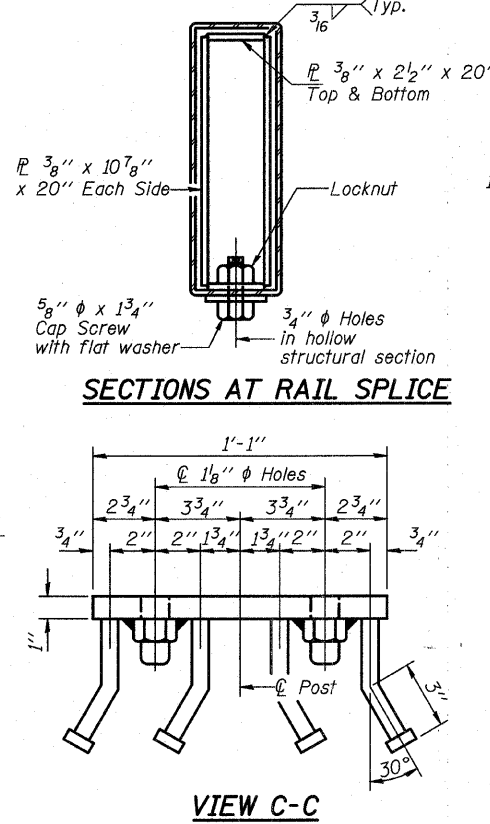
DETAILS OF CURLED END SECTION
(Cost included with Steel Railing, Type S-1)



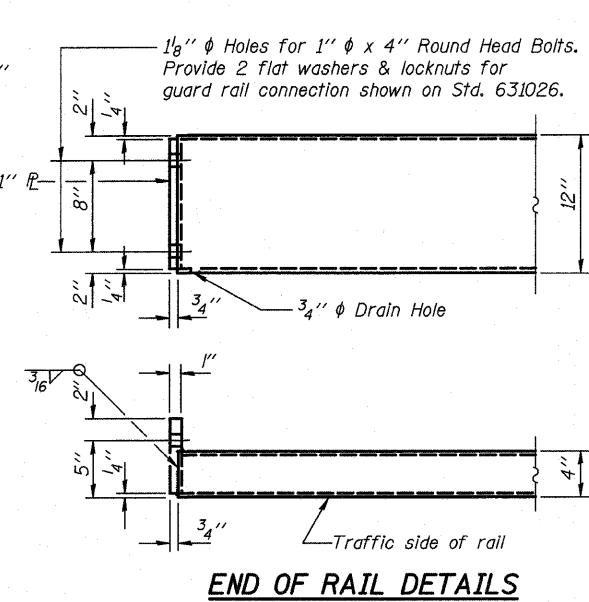
SECTION B-B



SECTION AT RAILING POST

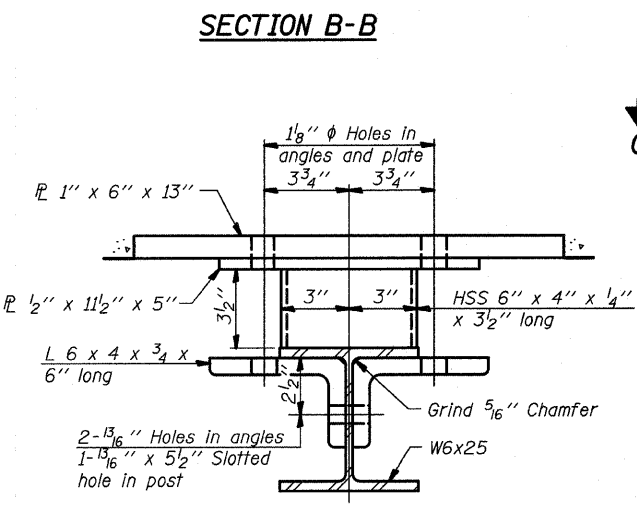


SECTIONS AT RAIL SPLICE

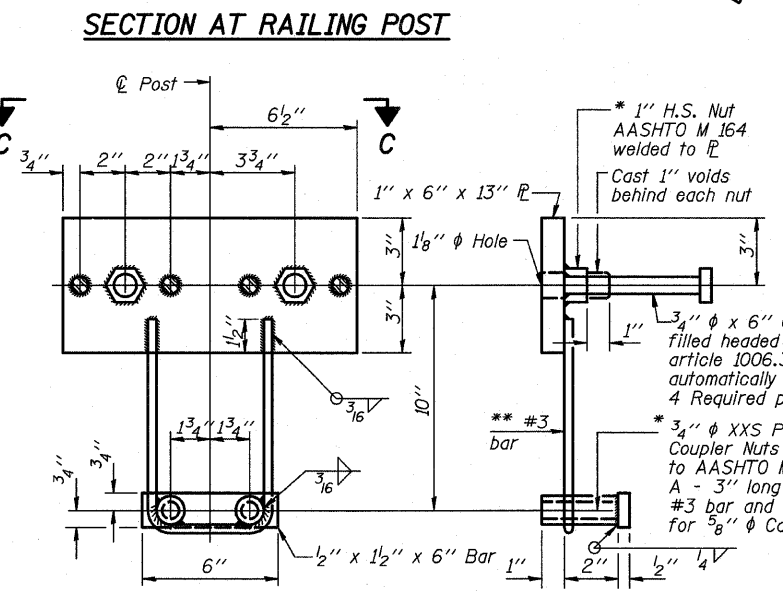


END OF RAIL DETAILS

Notes:
All field drilled holes shall be coated with an approved zinc rich paint before erection.
For multi-span bridges, sufficient 1/4\"/>

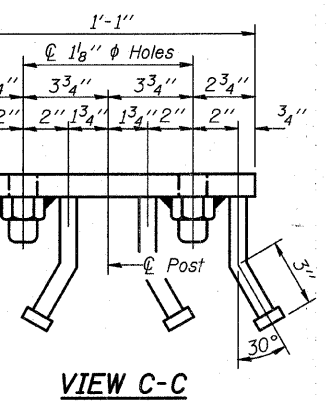


SECTION C-C



ANCHOR DEVICE

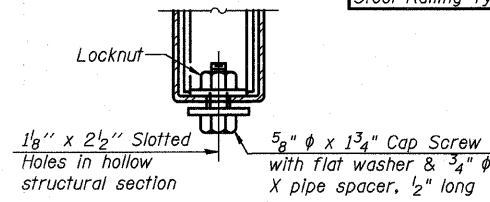
* Threaded areas shall be plugged or blocked off during casting of beam.



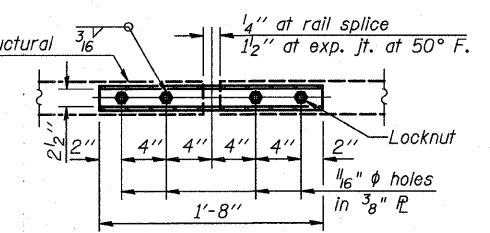
VIEW C-C

BILL OF MATERIAL

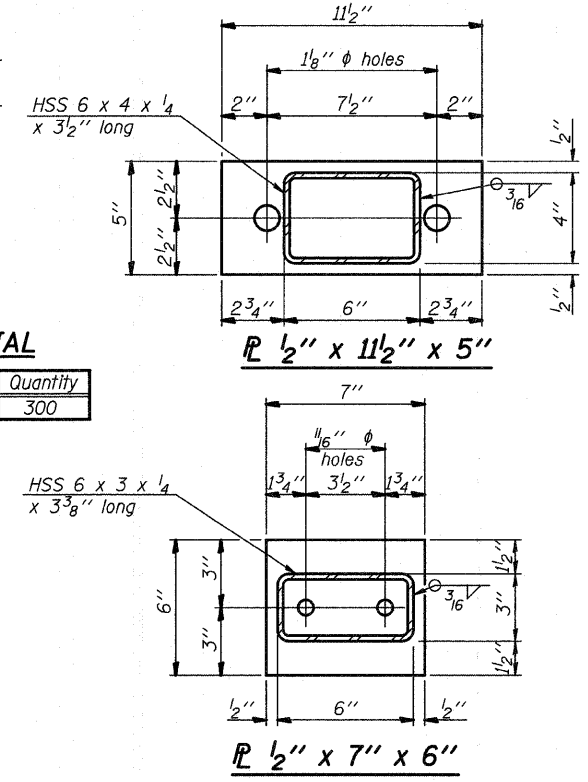
Item	Unit	Quantity
Steel Railing Type S-1	Foot	300



**RAIL SPLICE CONNECTION
AT EXPANSION JT.**



**PLAN-BOTT. SPLICE P
TYPICAL**



TYPE S-1 STEEL RAILING DETAILS

REVISIONS		SECTION 05-04163-00-BR FRIENDS CREEK ROAD DISTRICT		DRAWN BY DATE
No.	DATE	INITIALS		R KING 11/07
1				CHECKED BY DATE
2				JMB 11/07
3				BOOK NUMBER
4				314
5				PROJECT No.
6				5129
7				SHEET No.
8				
9				
10				

HOMER L. CHASTAIN & ASSOCIATES, LLP
CONSULTING ENGINEERS
184-00127

DECATUR CHICAGO
617 423-8544 678 714-0080

ROCKFORD
815 489-0050