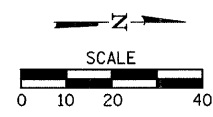
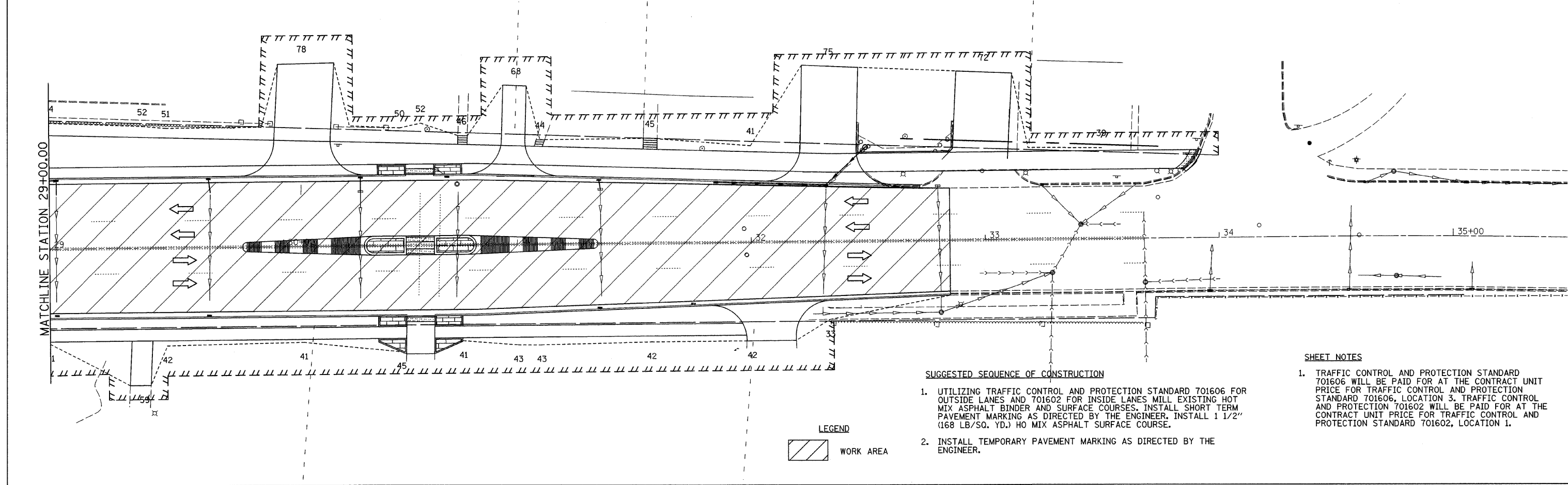
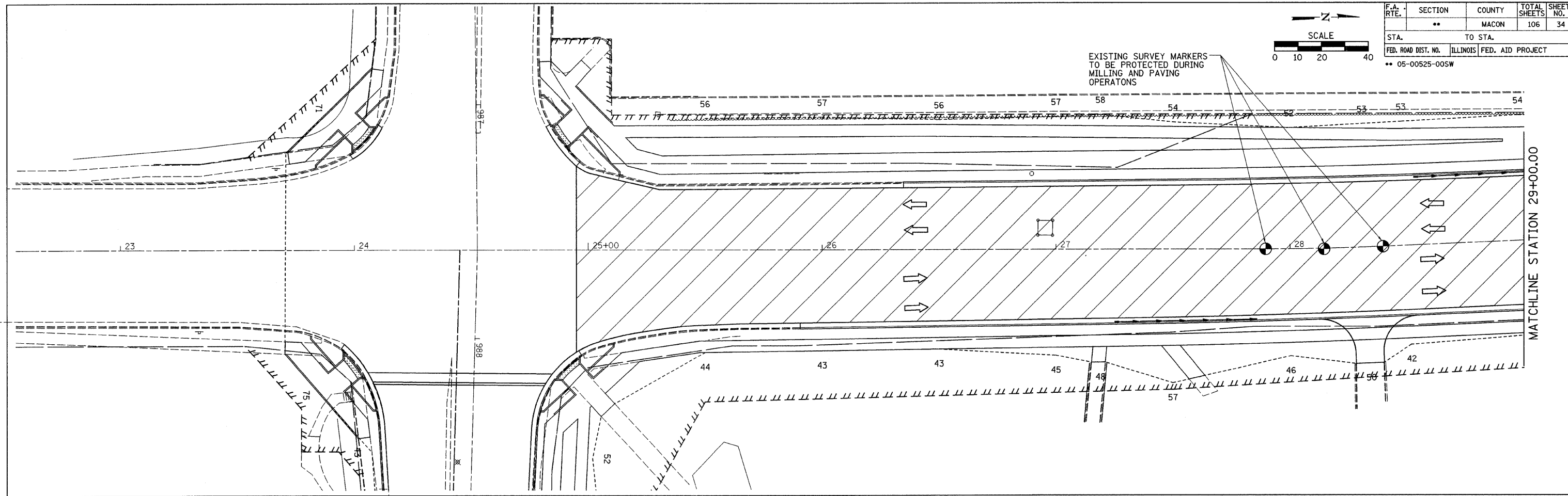


F.A. RTE.	SECTION	COUNTY	TOTAL SHEETS	SHEET NO.
**	**	MACON	106	34
STA.		TO STA.		
FED. ROAD DIST. NO.	ILLINOIS	FED. AID PROJECT		
** 05-00525-00SW				



EXISTING SURVEY MARKERS  
TO BE PROTECTED DURING  
MILLING AND PAVING  
OPERATIONS

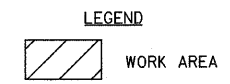


**SUGGESTED SEQUENCE OF CONSTRUCTION**

1. UTILIZING TRAFFIC CONTROL AND PROTECTION STANDARD 701606 FOR OUTSIDE LANES AND 701602 FOR INSIDE LANES MILL EXISTING HOT MIX ASPHALT BINDER AND SURFACE COURSES. INSTALL SHORT TERM PAVEMENT MARKING AS DIRECTED BY THE ENGINEER. INSTALL 1 1/2" (168 LB/SQ. YD.) HO MIX ASPHALT SURFACE COURSE.
2. INSTALL TEMPORARY PAVEMENT MARKING AS DIRECTED BY THE ENGINEER.

**SHEET NOTES**

1. TRAFFIC CONTROL AND PROTECTION STANDARD 701606 WILL BE PAID FOR AT THE CONTRACT UNIT PRICE FOR TRAFFIC CONTROL AND PROTECTION STANDARD 701606, LOCATION 3. TRAFFIC CONTROL AND PROTECTION 701602 WILL BE PAID FOR AT THE CONTRACT UNIT PRICE FOR TRAFFIC CONTROL AND PROTECTION STANDARD 701602, LOCATION 1.



PLOT DATE = 2/26/2008  
 FILE NAME = F:\09\95545\Drawings\MiscPlans\Stage 5 Construction.dgn  
 PLOT SCALE = 28.0000 / 1" = 100'  
 USER NAME = fcook