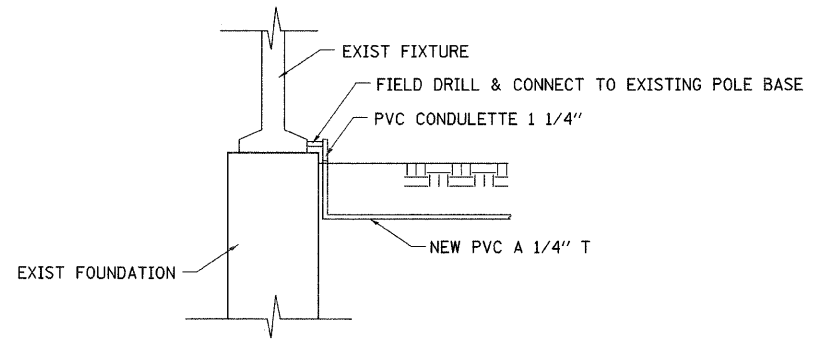
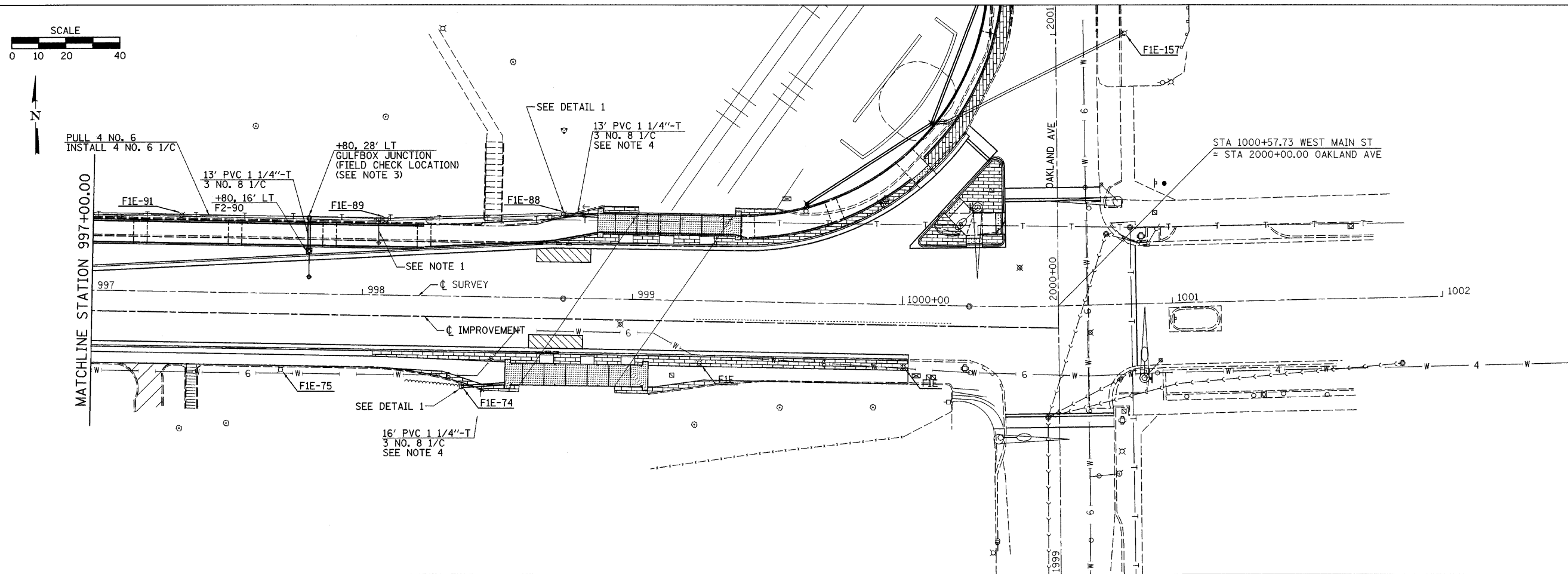
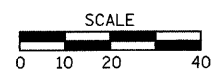


F.A. RTE.	SECTION	COUNTY	TOTAL SHEETS	SHEET NO.
**	**	MACON	106	57

STA.	TO STA.
FED. ROAD DIST. NO.	ILLINOIS FED. AID PROJECT

** 05-00525-00SW



DETAIL 1

COST OF CONNECTING TO EXISTING FIXTURE INCLUDED IN THE COST OF THE VARIOUS ITEMS OF WORK

- NOTES:
- EXISTING LIGHT FIXTURES AND ARMS MOUNTED ON EXISTING WOOD POLES, ARMS AND FIXTURES TO BE REMOVED AFTER A NEW LIGHT SYSTEM IS ACTIVATED. COST INCLUDED IN THE VARIOUS LIGHTING PAY ITEMS. REMOVED ARMS AND FIXTURES TO BE DELIVERED TO CITY OF DECATUR MUNICIPAL SERVICES CENTER, 2600 N. JASPER ST.
 - FIXTURES NOTED "FIR" ARE EXISTING "F1" FIXTURES, RELOCATED.
 - INSTALL GULF BOX JUNCTION OVER EXISTING CONDUIT. CUT CONDUIT & INSTALL FITTINGS TO MAKE CONNECTION. COST OF MAKING CONNECTION INCLUDED IN COST OF GULFBOX JUNCTION.
 - CONDUIT TO CANOPY LIGHT JUNCTION BOX (JUNCTION BOX TO BE SUPPLIED WITH CANOPY LIGHTING).

PLOT DATE = 2/26/2008
 FILE NAME = C:\Users\mason\Documents\Projects\WestMain\Lighting.dgn
 USER NAME = mason