

F.A. RTE.	SECTION	COUNTY	TOTAL SHEETS	SHEET NO.
**	**	MACON	106	67
STA. TO STA.		FED. ROAD DIST. NO. ILLINOIS FED. AID PROJECT		
		05-00525-00SW		

RELOCATE EXISTING MAST ARM ASSEMBLY AND POLE  
27' RT STA 30+45 TO 33' RT STA 30+45 = 1 EACH

ELECTRICAL CABLE IN CONDUIT, 3 NO 12, 1/C  
RT STA 30+39 TO RT STA 30+45 = 66 LF

DETECTOR LOOP REPLACEMENT  
LT STA. 988+24 = 291 LF  
LT STA. 988+97 = 57 LF  
RT STA. 24+99 = 115 LF  
RT STA. 25+22 = 57 LF  
LT STA. 26+92 = 81 LF

GULFBOX JUNCTION REMOVAL  
26+89.60 29.9' LT 1 EACH

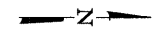
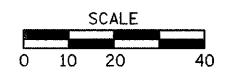
REMOVE ELECTRIC CABLE FROM CONDUIT  
LT STA 24+94 TO LT STA 26+90 = 206 LF

ELECTRICAL CABLE IN CONDUIT, LEAD IN, NO 18, 3 PAIR  
LT STA 24+94 TO LT STA 26+90 = 206 LF

CONDUIT IN TRENCH, 1 1/2" DIA. GALVANIZED STEEL  
LT STA 26+80 TO LT STA 26+90 = 10 LF  
RT STA 30+39 TO RT STA 30+45 = 6 LF

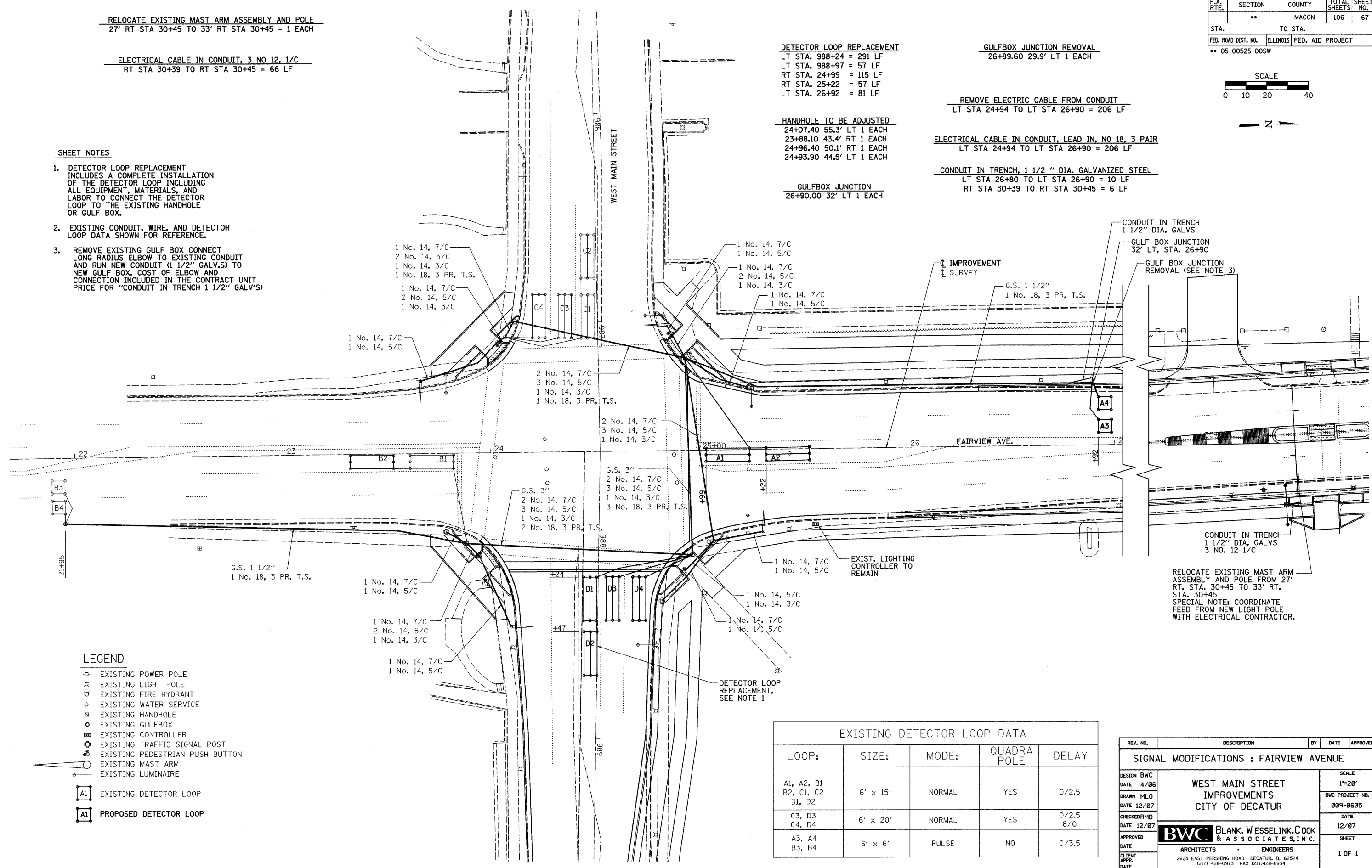
HANDHOLE TO BE ADJUSTED  
24+07.40 55.3' LT 1 EACH  
23+88.10 43.4' RT 1 EACH  
24+96.40 50.1' RT 1 EACH  
24+93.90 44.5' LT 1 EACH

GULFBOX JUNCTION  
26+90.00 32' LT 1 EACH



SHEET NOTES

- DETECTOR LOOP REPLACEMENT INCLUDES A COMPLETE INSTALLATION OF THE DETECTOR LOOP INCLUDING ALL EQUIPMENT, MATERIALS, AND LABOR TO CONNECT THE DETECTOR LOOP TO THE EXISTING HANDHOLE OR GULF BOX.
- EXISTING CONDUIT, WIRE, AND DETECTOR LOOP DATA SHOWN FOR REFERENCE.
- REMOVE EXISTING GULF BOX CONNECT LONG RADIUS ELBOW TO EXISTING CONDUIT AND RUN NEW CONDUIT (1 1/2" GALV.S) TO NEW GULF BOX. COST OF ELBOW AND CONNECTION INCLUDED IN THE CONTRACT UNIT PRICE FOR "CONDUIT IN TRENCH 1 1/2" GALV'S)



LEGEND

- EXISTING POWER POLE
- ⊗ EXISTING LIGHT POLE
- ⊕ EXISTING FIRE HYDRANT
- EXISTING WATER SERVICE
- ⊞ EXISTING HANDHOLE
- ⊙ EXISTING GULFBOX
- ⊞ EXISTING CONTROLLER
- ⊙ EXISTING TRAFFIC SIGNAL POST
- ⊙ EXISTING PEDESTRIAN PUSH BUTTON
- ⊙ EXISTING MAST ARM
- ⊙ EXISTING LUMINAIRE
- A1 EXISTING DETECTOR LOOP
- A1 PROPOSED DETECTOR LOOP

LOOP:	SIZE:	MODE:	QUADRA POLE	DELAY
A1, A2, B1 B2, C1, C2 D1, D2	6' x 15'	NORMAL	YES	0/2.5
C3, D3 C4, D4	6' x 20'	NORMAL	YES	0/2.5 6/0
A3, A4 B3, B4	6' x 6'	PULSE	NO	0/3.5

REV. NO.	DESCRIPTION	BY	DATE	APPROVED
SIGNAL MODIFICATIONS : FAIRVIEW AVENUE				
DESIGN BWC DATE 4/06	WEST MAIN STREET IMPROVEMENTS CITY OF DECATUR			SCALE 1"=20'
DRAWN MLD DATE 12/07				BWC PROJECT NO. 009-0605
CHECKED RMD DATE 12/07				DATE 12/07
APPROVED DATE				SHEET 1 OF 1
ARCHITECTS		ENGINEERS		
BWC BLANK, WESSELINK, COOK & ASSOCIATES, INC. 2623 EAST PERSHING ROAD, DECATUR, IL 62524 (217) 428-0973 FAX (217) 428-8934				