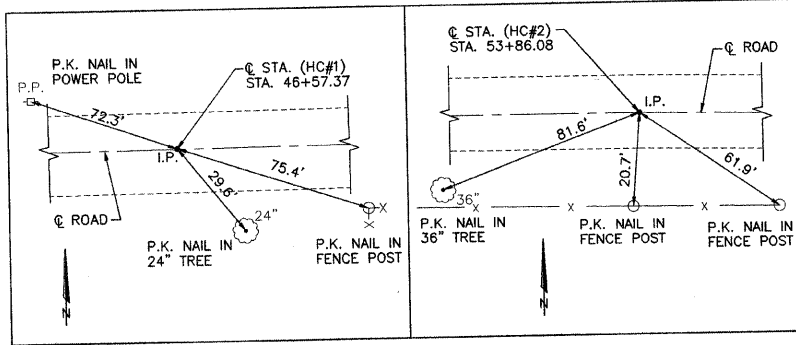


LINE TIES



HORIZONTAL CONTROL COORDINATES

POINT	LOCATION	N. COOR.	E. COOR.
HC#1(IRON PIN)	@ STA. 46+57.37	5000.00	5000.00
HC#2(IRON PIN)	@ STA. 53+86.08	5000.00	5728.70

CONSTRUCT SEEDING, CLASS 2 (SPECIAL)
STA. 47+89.23 TO STA. 51+40 = 0.12 ACRE

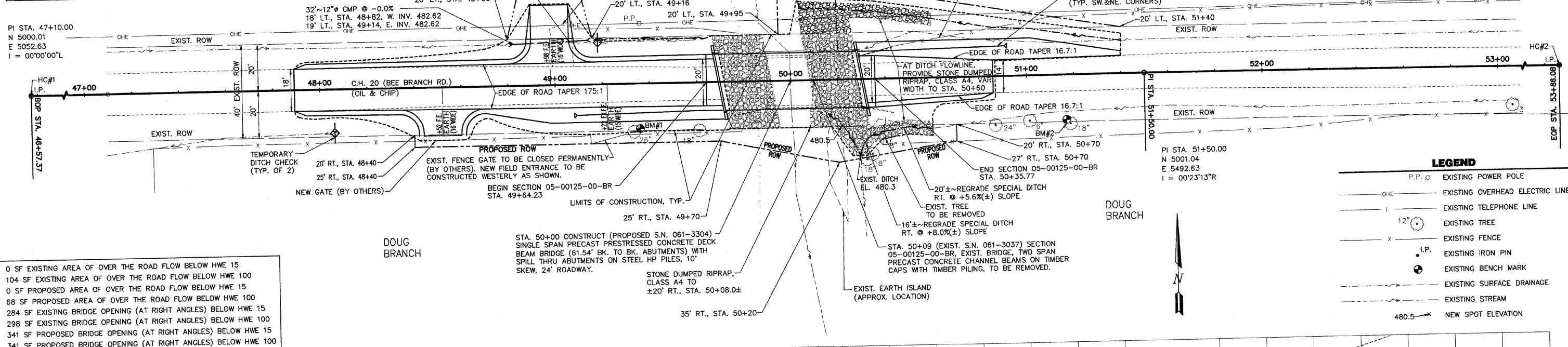
ROUTE NO.	SECTION	COUNTY	TOTAL SHEETS	SHEET NO.
C.H. 20	05-00125-00-BR	MARION	13	3

FEDERAL AID PROJECT: ILLINOIS PROJECT CONTRACT NO. 97332

BENCH MARK COORDINATES

POINT	LOCATION	ELEV.
BM#1(R.R. SPIKE IN 26" TREE)	19.09' RT., STA. 49+35.80	485.91
BM#2(R.R. SPIKE IN 18" TREE)	19.12' RT., STA. 51+16.79	490.52

NOTE:
TRANSITION FROM TYPICAL BRIDGE SECTION (12' LEFT AND 12' RIGHT OF @ CONSTRUCTION) TO EXISTING CONDITION AT 20' LEFT AND 20' RIGHT OF @ CONSTRUCTION



0 SF EXISTING AREA OF OVER THE ROAD FLOW BELOW HWE 15
104 SF EXISTING AREA OF OVER THE ROAD FLOW BELOW HWE 100
0 SF PROPOSED AREA OF OVER THE ROAD FLOW BELOW HWE 15
68 SF PROPOSED AREA OF OVER THE ROAD FLOW BELOW HWE 100
284 SF EXISTING BRIDGE OPENING (AT RIGHT ANGLES) BELOW HWE 15
298 SF EXISTING BRIDGE OPENING (AT RIGHT ANGLES) BELOW HWE 100
341 SF PROPOSED BRIDGE OPENING (AT RIGHT ANGLES) BELOW HWE 15
341 SF PROPOSED BRIDGE OPENING (AT RIGHT ANGLES) BELOW HWE 100

LEGEND

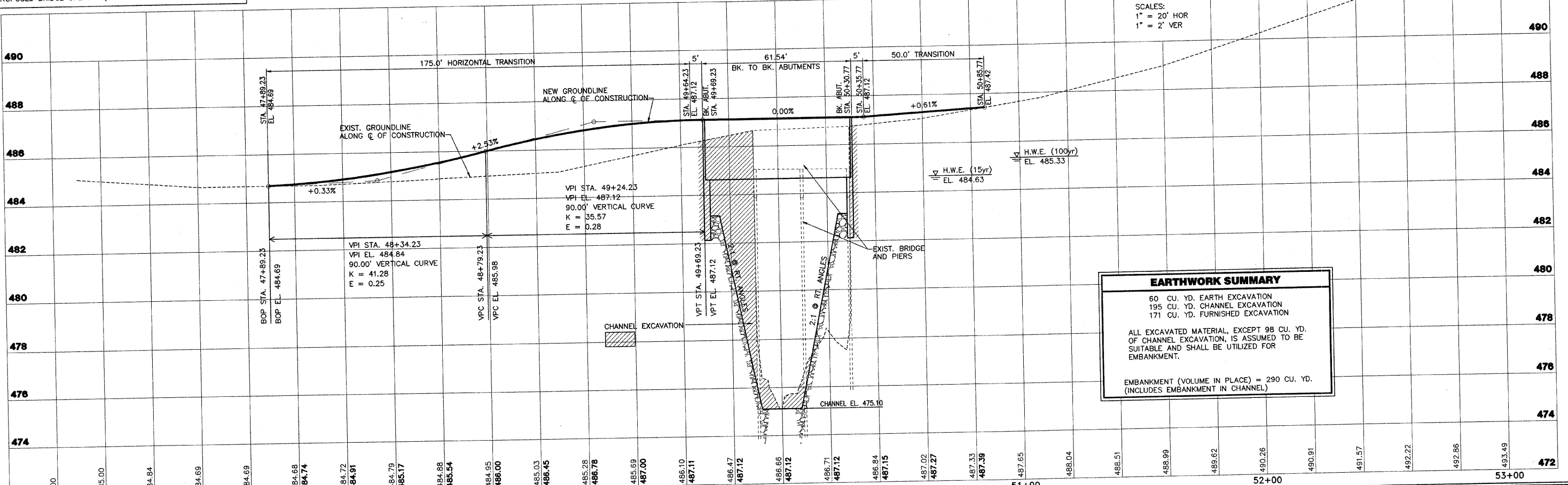
- P.P. @ EXISTING POWER POLE
- OHE EXISTING OVERHEAD ELECTRIC LINE
- T EXISTING TELEPHONE LINE
- 12" EXISTING TREE
- X EXISTING FENCE
- I.P. EXISTING IRON PIN
- EXISTING BENCH MARK
- - - EXISTING SURFACE DRAINAGE
- - - EXISTING STREAM
- 480.5 NEW SPOT ELEVATION

EARTHWORK SUMMARY

60 CU. YD. EARTH EXCAVATION
195 CU. YD. CHANNEL EXCAVATION
171 CU. YD. FURNISHED EXCAVATION

ALL EXCAVATED MATERIAL, EXCEPT 98 CU. YD. OF CHANNEL EXCAVATION, IS ASSUMED TO BE SUITABLE AND SHALL BE UTILIZED FOR EMBANKMENT.

EMBANKMENT (VOLUME IN PLACE) = 290 CU. YD. (INCLUDES EMBANKMENT IN CHANNEL)



STS CONSULTANTS
2524 South Broadway, P.O. Box 850
Salem, Illinois 62881
Ph(618)548-3500
Fax(618)548-5246
IL Design Firm Reg. No. 184-001518

**COUNTY HIGHWAY 20 (BEE BRANCH ROAD)
SECTION 05-00125-00-BR
MARION COUNTY, ILLINOIS**

**PLAN AND PROFILE
STA. 47+00 TO STA. 53+00**

SURVEY	CHECKED	DATE
JAS	APPROVED	1-28-08
MRQ	REVISED	
BLT/JSD		

JOB NO. 30482