

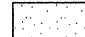




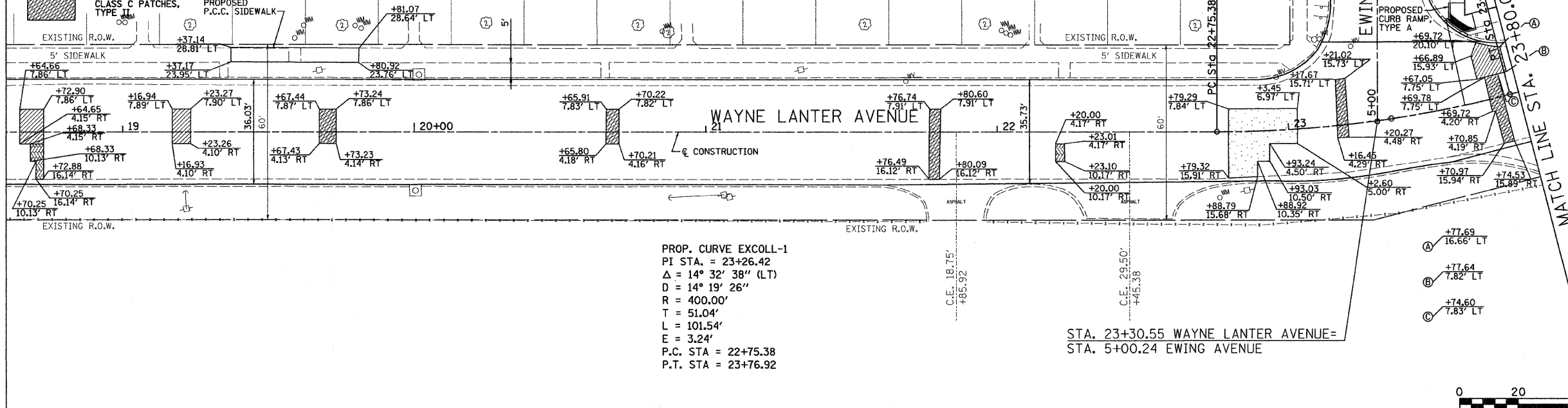
FINAL SURVEY PLOTTED	DATE
NOTE BOOK NO.	BY
AREAS CHECKED	

ORIGINAL SURVEY PLOTTED	DATE
NOTE BOOK NO.	BY
AREAS CHECKED	

LEGEND

-  CLASS B PATCHES, TYPE II
-  CLASS B PATCHES, TYPE III
-  CLASS B PATCHES, TYPE IV
-  CLASS C PATCHES, TYPE I
-  CLASS C PATCHES, TYPE II

MATCH LINE STA. 18+60.00

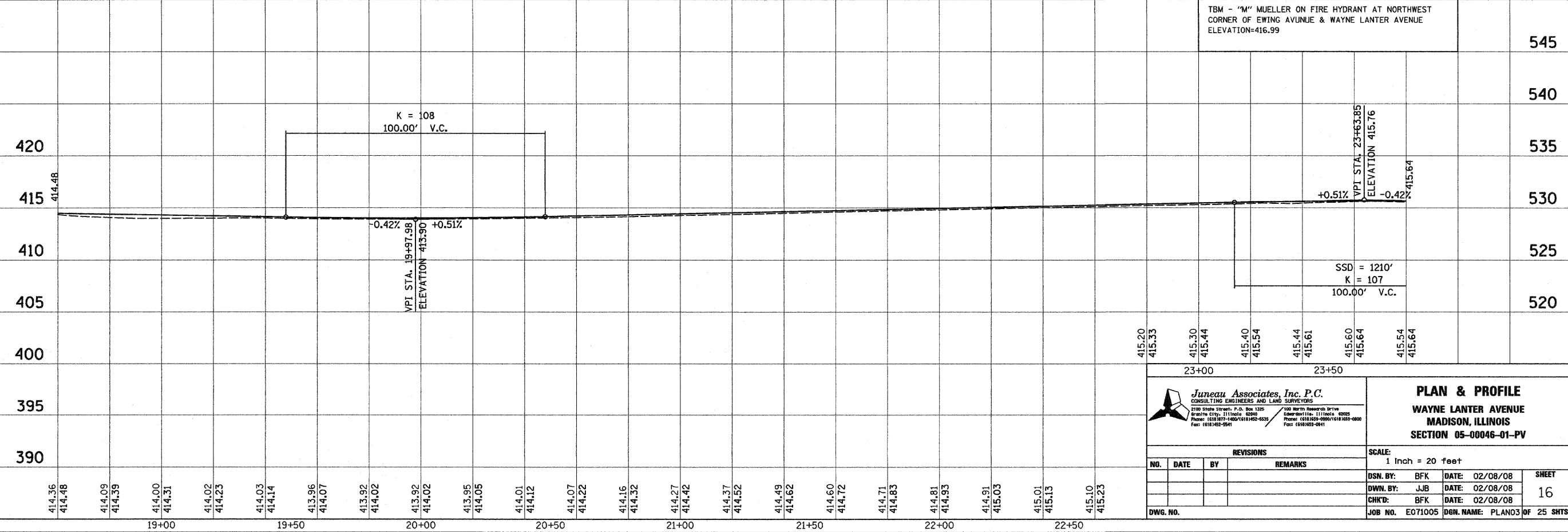
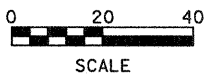


PROP. CURVE EXCOLL-1
 PI STA. = 23+26.42
 Δ = 14° 32' 38" (LT)
 D = 14° 19' 26"
 R = 400.00'
 T = 51.04'
 L = 101.54'
 E = 3.24'
 P.C. STA = 22+75.38
 P.T. STA = 23+76.92

STA. 23+30.55 WAYNE LANTER AVENUE=
 STA. 5+00.24 EWING AVENUE

F.A.U. RTE.	SECTION	COUNTY	TOTAL SHEETS	SHEET NO.
9103	05-00046-01-PV	MADISON	25	16
FED. ROAD DIST. NO.	ILLINOIS	FED. AID PROJECT		

CONTRACT NO. 97339



Juneau Associates, Inc. P.C.
 CONSULTING ENGINEERS AND LAND SURVEYORS
 2100 State Street, P.O. Box 1325
 Granite City, Illinois 62040
 Phone: (618) 977-1400 / (618) 952-5531
 Fax: (618) 952-5541

PLAN & PROFILE
 WAYNE LANTER AVENUE
 MADISON, ILLINOIS
 SECTION 05-00046-01-PV

NO.	DATE	BY	REMARKS

SCALE: 1 Inch = 20 feet			
DSN. BY: BFK	DATE: 02/08/08	SHEET	
DWN. BY: JUB	DATE: 02/08/08	16	
CHKD: BFK	DATE: 02/08/08		
DWG. NO.:	JOB NO. E071005	DGN. NAME: PLAN03 OF 25 SHTS	