

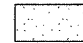


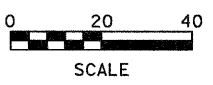
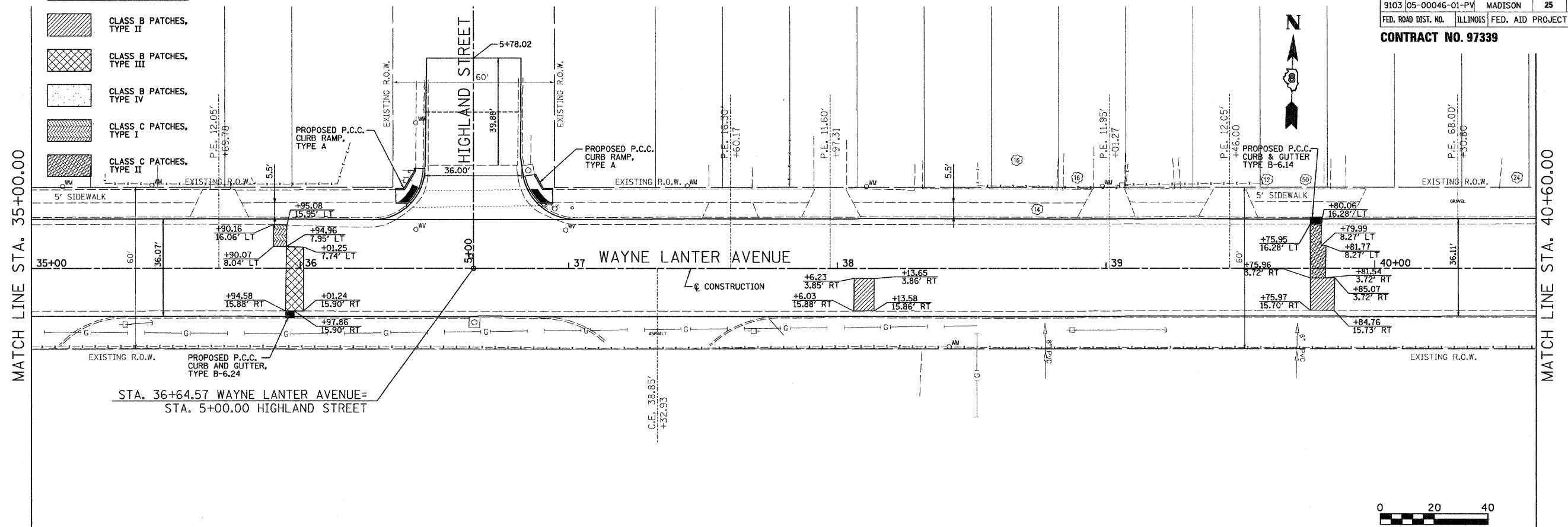


F.A.U. RTE.	SECTION	COUNTY	TOTAL SHEETS	SHEET NO.
9103	05-00046-01-PV	MADISON	25	19
FED. ROAD DIST. NO.		ILLINOIS FED. AID PROJECT		

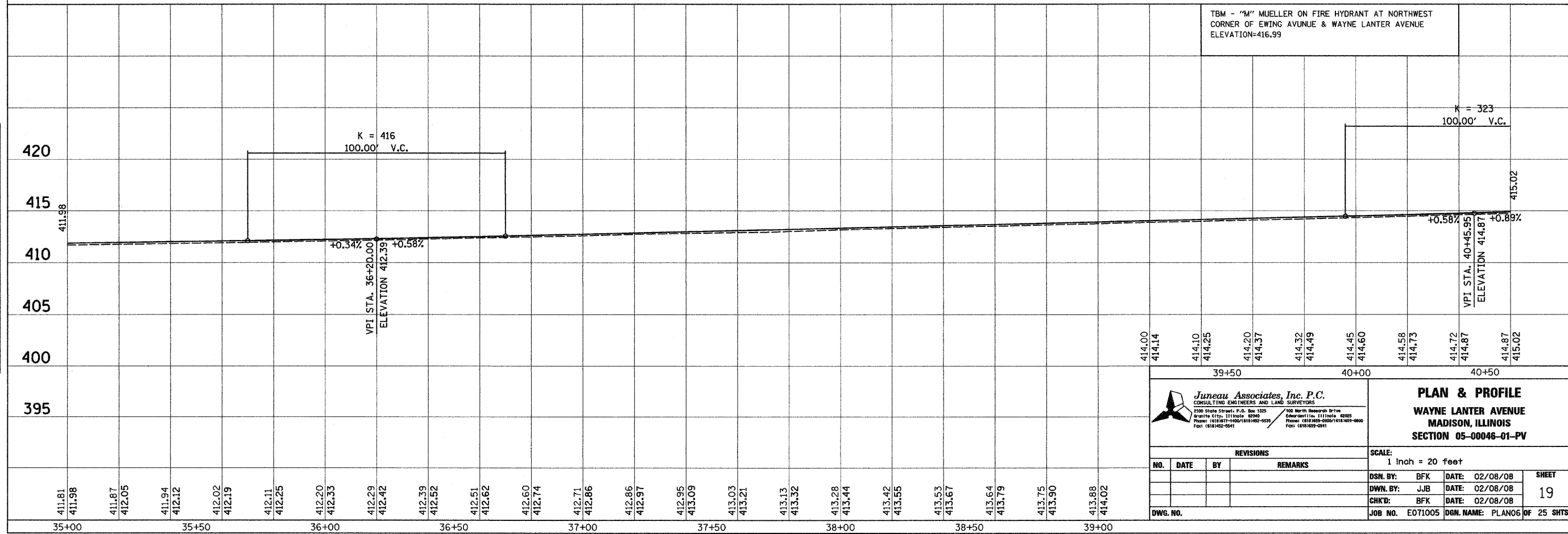
CONTRACT NO. 97339

LEGEND

-  CLASS B PATCHES, TYPE II
-  CLASS B PATCHES, TYPE III
-  CLASS B PATCHES, TYPE IV
-  CLASS C PATCHES, TYPE I
-  CLASS C PATCHES, TYPE II



TBM - "M" MUELLER ON FIRE HYDRANT AT NORTHWEST CORNER OF EWING AVENUE & WAYNE LANTER AVENUE ELEVATION=416.99



Juneau Associates, Inc. P.C.
CONSULTING ENGINEERS AND LAND SURVEYORS
2100 State Street, P.O. Box 1325
Madison, IL 61702-1325
Phone: (618)827-4400 / (618)452-5555
Fax: (618)452-2941

PLAN & PROFILE
WAYNE LANTER AVENUE
MADISON, ILLINOIS
SECTION 05-00046-01-PV

REVISIONS			
NO.	DATE	BY	REMARKS

SCALE: 1 inch = 20 feet			
DSN. BY:	BFK	DATE:	02/08/08
DWN. BY:	JUB	DATE:	02/08/08
CHK'D:	BFK	DATE:	02/08/08
DWG. NO.	JOB NO. E071005	DGN. NAME:	PLAN06 OF 25 SHTS

FINAL SURVEY	BY	DATE
SURVEY PLOTTED		
NOTE BOOK TEMPLATE		
AREAS CHECKED		
NO.		

ORIGINAL SURVEY	BY	DATE
SURVEY PLOTTED		
NOTE BOOK TEMPLATE		
AREAS CHECKED		
NO.		