

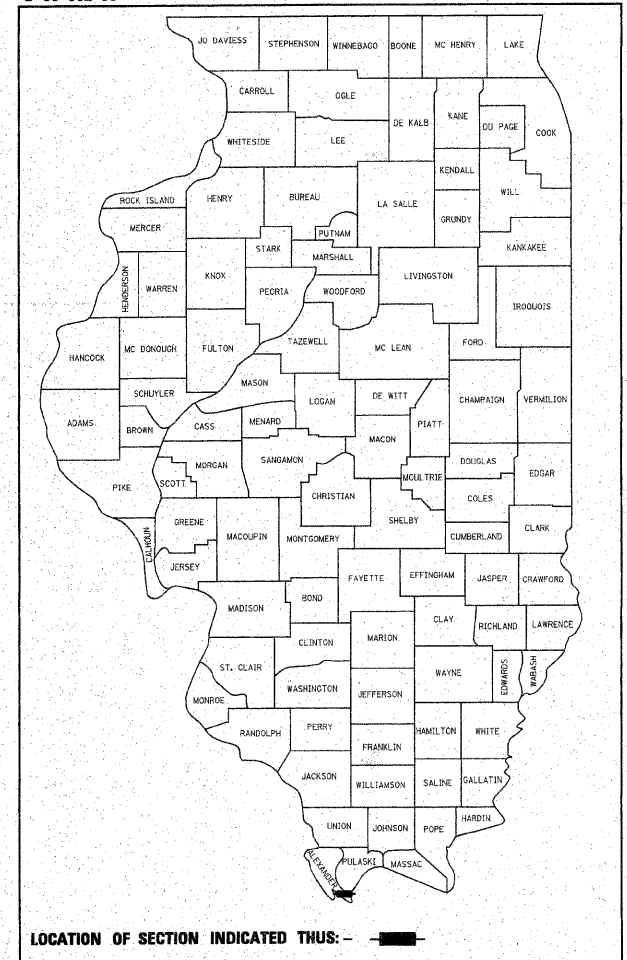
F.A.P. RTE.	SECTION	COUNTY	TOTAL SHEETS	SHEET NO.
•	•	ALEXANDER	65	1

- FAP 14 (US51/60/62)
- 138(N,TS-2,RS-2)

STATE OF ILLINOIS
DEPARTMENT OF TRANSPORTATION
DIVISION OF HIGHWAYS
**PROPOSED
HIGHWAY PLANS**

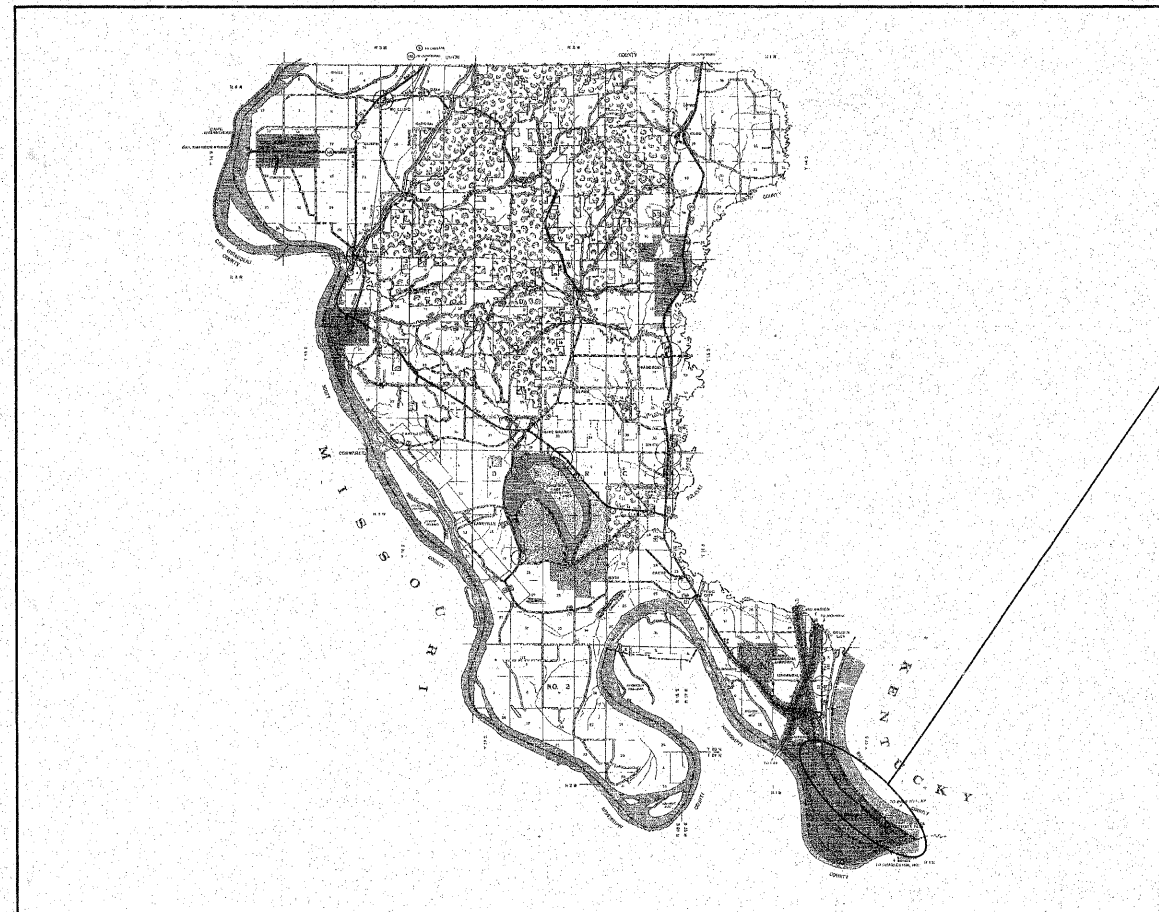
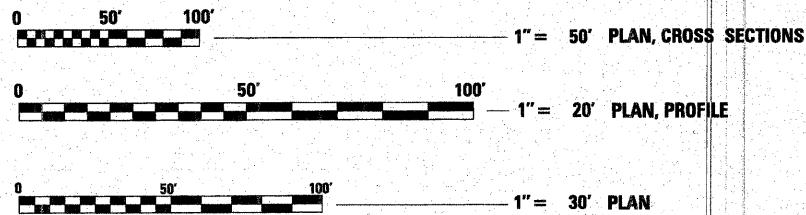
FAP 14 (US 51/60/62)
SECTION 138(N,TS-2,RS-2)
**INTERSECTION IMPROVEMENTS, ELIMINATION
OF TRAFFIC SIGNALS AND RESURFACING
ALEXANDER COUNTY**
C-99-006-06
PROJECT: ACF-0014 (135)

D-99-002-06



FOR INDEX OF SHEETS, SEE SHEET NO. 2
FOR SUMMARY OF QUANTITIES, SEE SHEET NO. 3 & 4

APPROACH	ADT (2006)	% TRUCKS
US-51 N OF US-51/US-60/62	4,829	13%
US-51/US-60/62 E OF US-51	7,111	16%
US-60/62 S OF US-51/US-60/62	5,201	21%



PROJECT LOCATION
US 51 STA 3+62.25 TO 48+17.90
US 51/60/62 STA 0+06.65 TO 1+95.47
US 60/62 STA 48+17.9 TO 56+55.5

STATE OF ILLINOIS
DEPARTMENT OF TRANSPORTATION
DIVISION OF HIGHWAYS

SUBMITTED Jan 17, 20 08
Mary Anne [Signature]
DEPUTY DIRECTOR OF HIGHWAYS, REGION ENGINEER

March 21, 20 08
Eric E. Harms [Signature]
INTERIM ENGINEER OF DESIGN AND ENVIRONMENT

March 21, 20 08
Christine M. Reed [Signature]
DIRECTOR OF HIGHWAYS, CHIEF ENGINEER

**PRINTED BY THE AUTHORITY
OF THE STATE OF ILLINOIS**

FULL SIZE PLANS HAVE BEEN PREPARED USING STANDARD
ENGINEERING SCALES. REDUCED SIZED PLANS WILL NOT
CONFORM TO STANDARD SCALES. IN MAKING MEASUREMENTS
ON REDUCED PLANS, THE ABOVE SCALES MAY BE USED.

J.U.L.I.E.
JOINT UTILITY LOCATION INFORMATION FOR EXCAVATION
1-800-892-0123

CONTRACT NO. 98943

GROSS LENGTH OF PROJECT = 0.995 MILES
NET LENGTH OF PROJECT = 0.995 MILES

1/22/2008
c:\projects\sb\98943\0206\98943\0206p3.dgn
50.0000 / IN.
PROJECT ENGINEER: SUSAN POE
DESIGNER: PATRICK MAS
(618) 549-4171
CENTREX 782-4554