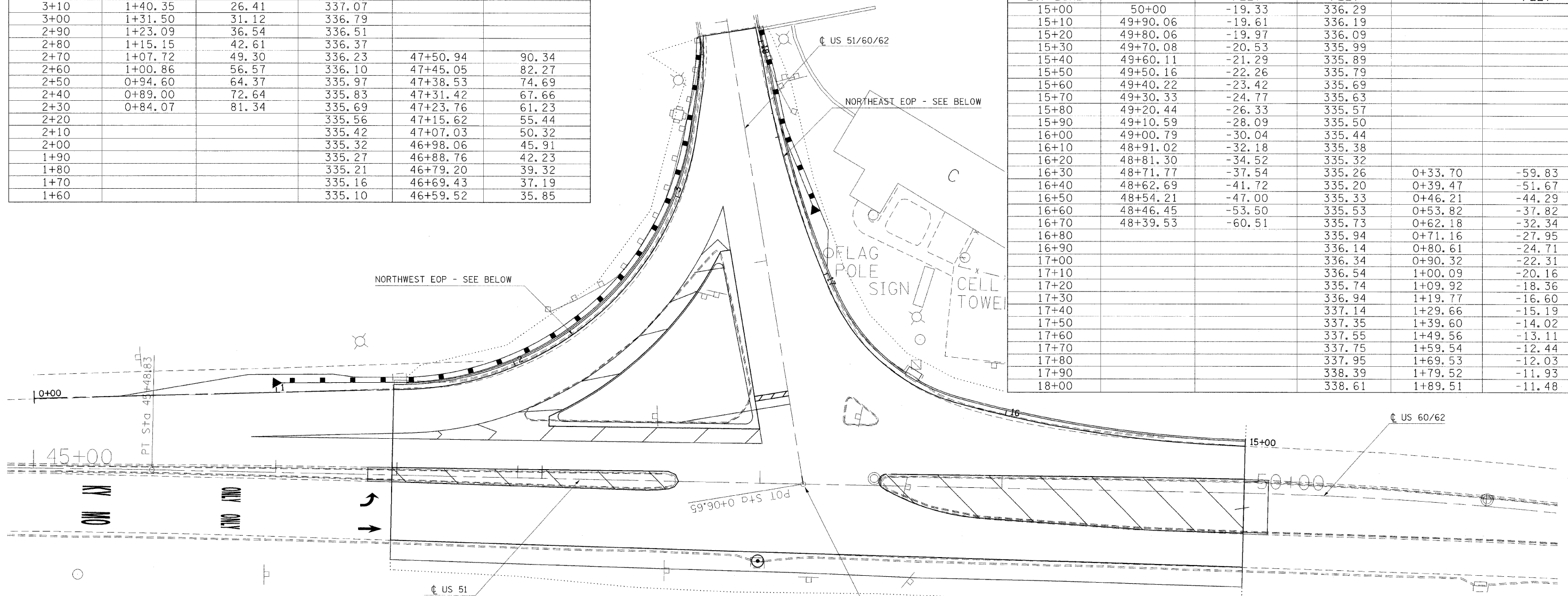


F.A.P. RTE.	SECTION	COUNTY	TOTAL SHEETS	SHEET NO.
*	**	ALEXANDER	65	20
STA.		TO STA.		
FED. ROAD DIST. NO.		ILLINOIS FED. AID PROJECT		
* FAP 14 (US51/60/62)				
** 138(N,TS-2,R5-2)				

STATIONING ALONG NORTHWEST EOP LINE	STATIONING ALONG US 60	OFFSET TO EDGE OF PAVEMENT FEET	EDGE OF PAVEMENT ELEVATION FEET	STATIONING ALONG US 51	OFFSET TO EDGE OF PAVEMENT FEET
3+60	1+87.98	11.96	338.47		
3+50	1+78.13	13.65	338.19		
3+40	1+68.47	16.15	337.91		
3+30	1+58.93	19.17	337.63		
3+20	1+49.48	22.41	337.35		
3+10	1+40.35	26.41	337.07		
3+00	1+31.50	31.12	336.79		
2+90	1+23.09	36.54	336.51		
2+80	1+15.15	42.61	336.37		
2+70	1+07.72	49.30	336.23	47+50.94	90.34
2+60	1+00.86	56.57	336.10	47+45.05	82.27
2+50	0+94.60	64.37	335.97	47+38.53	74.69
2+40	0+89.00	72.64	335.83	47+31.42	67.66
2+30	0+84.07	81.34	335.69	47+23.76	61.23
2+20			335.56	47+15.62	55.44
2+10			335.42	47+07.03	50.32
2+00			335.32	46+98.06	45.91
1+90			335.27	46+88.76	42.23
1+80			335.21	46+79.20	39.32
1+70			335.16	46+69.43	37.19
1+60			335.10	46+59.52	35.85

STATIONING ALONG NORTHEAST EOP LINE	STATIONING ALONG US 51/60/62	OFFSET TO EDGE OF PAVEMENT FEET	EDGE OF PAVEMENT ELEVATION FEET	STATIONING ALONG US 60/62	OFFSET TO EDGE OF PAVEMENT FEET
15+00	50+00	-19.33	336.29		
15+10	49+90.06	-19.61	336.19		
15+20	49+80.06	-19.97	336.09		
15+30	49+70.08	-20.53	335.99		
15+40	49+60.11	-21.29	335.89		
15+50	49+50.16	-22.26	335.79		
15+60	49+40.22	-23.42	335.69		
15+70	49+30.33	-24.77	335.63		
15+80	49+20.44	-26.33	335.57		
15+90	49+10.59	-28.09	335.50		
16+00	49+00.79	-30.04	335.44		
16+10	48+91.02	-32.18	335.38		
16+20	48+81.30	-34.52	335.32		
16+30	48+71.77	-37.54	335.26	0+33.70	-59.83
16+40	48+62.69	-41.72	335.20	0+39.47	-51.67
16+50	48+54.21	-47.00	335.33	0+46.21	-44.29
16+60	48+46.45	-53.50	335.53	0+53.82	-37.82
16+70	48+39.53	-60.51	335.73	0+62.18	-32.34
16+80			335.94	0+71.16	-27.95
16+90			336.14	0+80.61	-24.71
17+00			336.34	0+90.32	-22.31
17+10			336.54	1+00.09	-20.16
17+20			335.74	1+09.92	-18.36
17+30			336.94	1+19.77	-16.60
17+40			337.14	1+29.66	-15.19
17+50			337.35	1+39.60	-14.02
17+60			337.55	1+49.56	-13.11
17+70			337.75	1+59.54	-12.44
17+80			337.95	1+69.53	-12.03
17+90			338.39	1+79.52	-11.93
18+00			338.61	1+89.51	-11.48



NORTHWEST EOP
 STA. 0+00 N 118,402.4497 E 745,052.7444
 STA. 0+50.36 N 118,364.4429 E 745,085.7788

CURVE DATA
 PI STA. 2+60.32 N 118,205.8967 E 745,223.4320
 DELTA 81° 15' 7.57" (LT)
 DEGREE 46° 12' 22.59"
 TANGENT 106.3787
 LENGTH 175.8456
 RADIUS 124.00
 EXTERNAL 39.3782
 PC STA. 1+53.94 N 118,286.2241 E 745,153.6901
 PT STA. 3+29.79 N 118,262.6106 E 745,313.4318

STA. 3+46.08 N 118,271.0850 E 745,327.3447
 STA. 3+67.63 N 118,284.6978 E 745,344.0477

NORTH EAST EOP
 STA. 15+00.00 N 118,004.5342 E 745,356.2319

CURVE DATA 1
 PI STA. 15+65.76 N 118,057.2102 E 745,316.8688
 DELTA 12 DEG 31 MIN 40.46 SEC (RT)
 DEGREE 11 DEG 27 MIN 32.96 SEC
 TANGENT 54.8821
 LENGTH 109.3266
 RADIUS 500.00
 EXTERNAL 3.0030
 PC STA. 15+10.88 N 118,013.2469 E 745,349.7211
 PT STA. 16+20.20 N 118,107.2529 E 745,294.3349

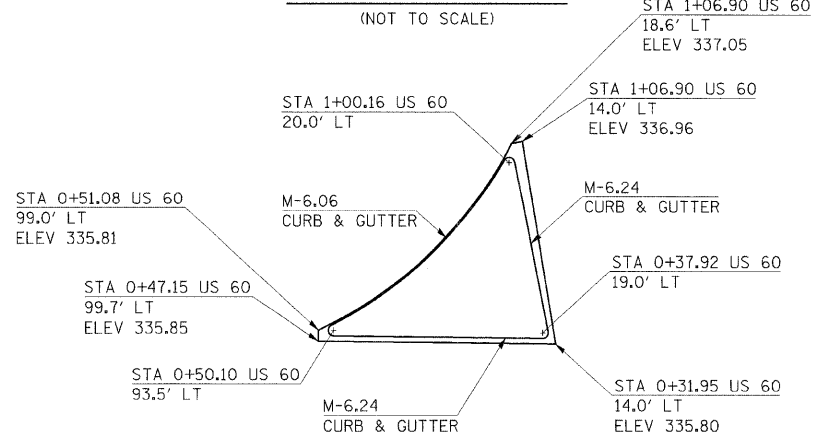
CURVE DATA 2
 PI STA. 16+58.33 N 118,142.0142 E 745,278.6822
 DELTA 50 DEG 57 MIN 32.21 SEC (RT)
 DEGREE 71 DEG 37 MIN 11.01 SEC
 TANGENT 38.1229
 LENGTH 71.1521
 RADIUS 80.00
 EXTERNAL 8.6191
 PC STA. 16+20.20 N 118,107.2529 E 745,294.3349
 PT STA. 16+91.36 N 118,176.0669 E 745,295.8218

CURVE DATA 3
 PI STA. 17+41.75 N 118,221.0818 E 745,318.4789
 DELTA 14 DEG 21 MIN 41.44 SEC (RT)
 DEGREE 14 DEG 19 MIN 26.20 SEC
 TANGENT 50.3953
 LENGTH 100.2623
 RADIUS 400.00
 EXTERNAL 3.1621
 PC STA. 16+91.36 N 118,176.0669 E 745,295.8218
 PT STA. 17+91.62 N 118,259.0701 E 745,351.5934

STA. 18+05.75 N 118,270.1324 E 745,360.3808

☐ STA. 48+17.90 (US 51) =
 STA. 0+06.65 (US 51/60/62) =
 STA. 48+17.9 (US 60/62)

NEW ISLAND DETAIL



1/22/2008
 c:\p\c\lect\584900206\900206p3.dgn
 20,000' / IN.
 noasdd