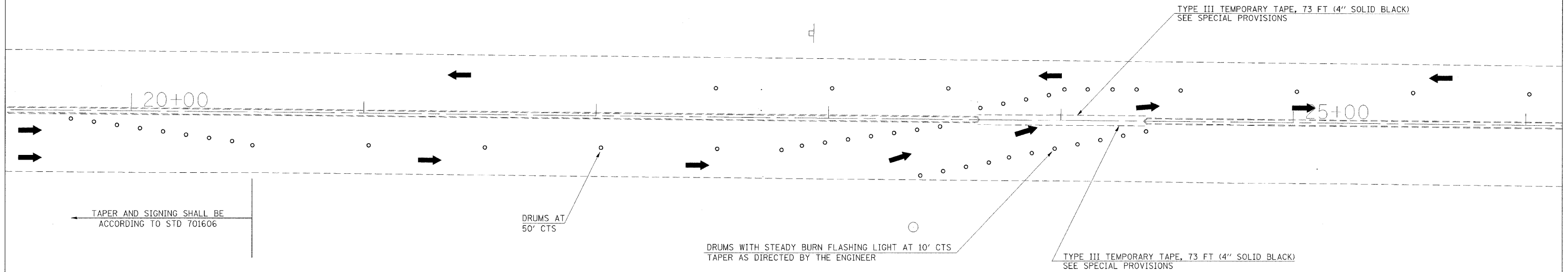
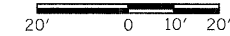
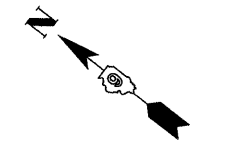


F.A.P. RTE.	SECTION	COUNTY	TOTAL SHEETS	SHEET NO.
*	**	ALEXANDER	65	32

STA.	TO STA.
FED. ROAD DIST. NO.	ILLINOIS FED. AID PROJECT

- * FAP 14 (US51/60/62)
- ** 138(N,TS-2,RS-2)



1/22/2008
 c:\pwworkspace\98943\98943.dgn
 28.0000' / 1" = 100'
 rns:slp