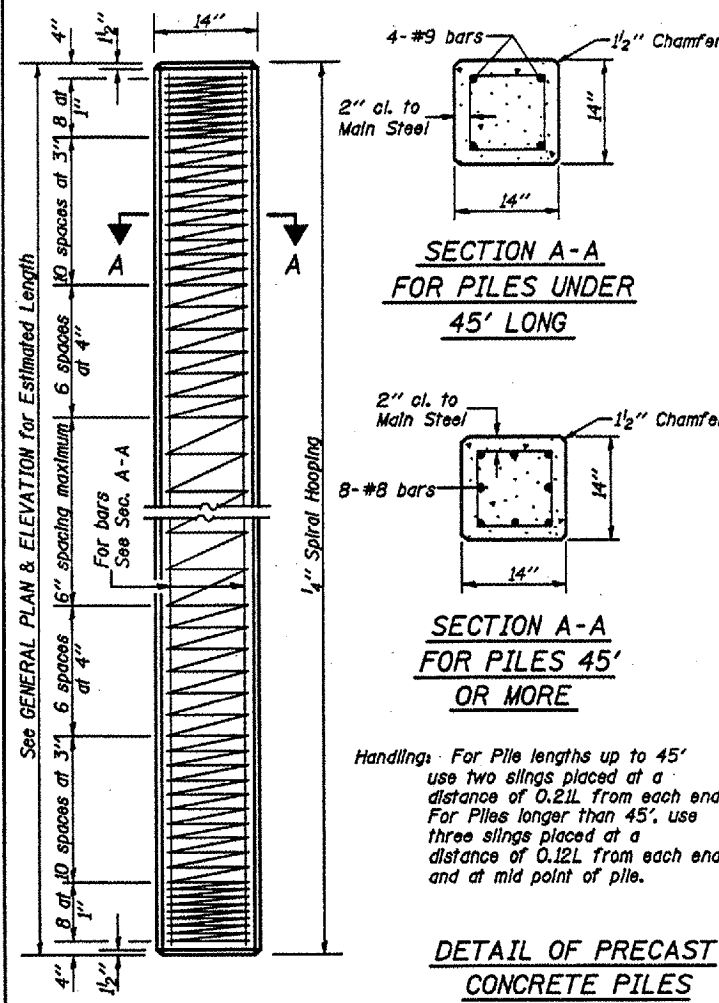


ROUTE	SECTION	COUNTY	TOTAL SHEETS	SHEET NO.
TR 39	06-01159-00-BR	ALEXANDER	10	9
PROJECT NO. BROS-003(13)			CONTRACT NO. 99320	

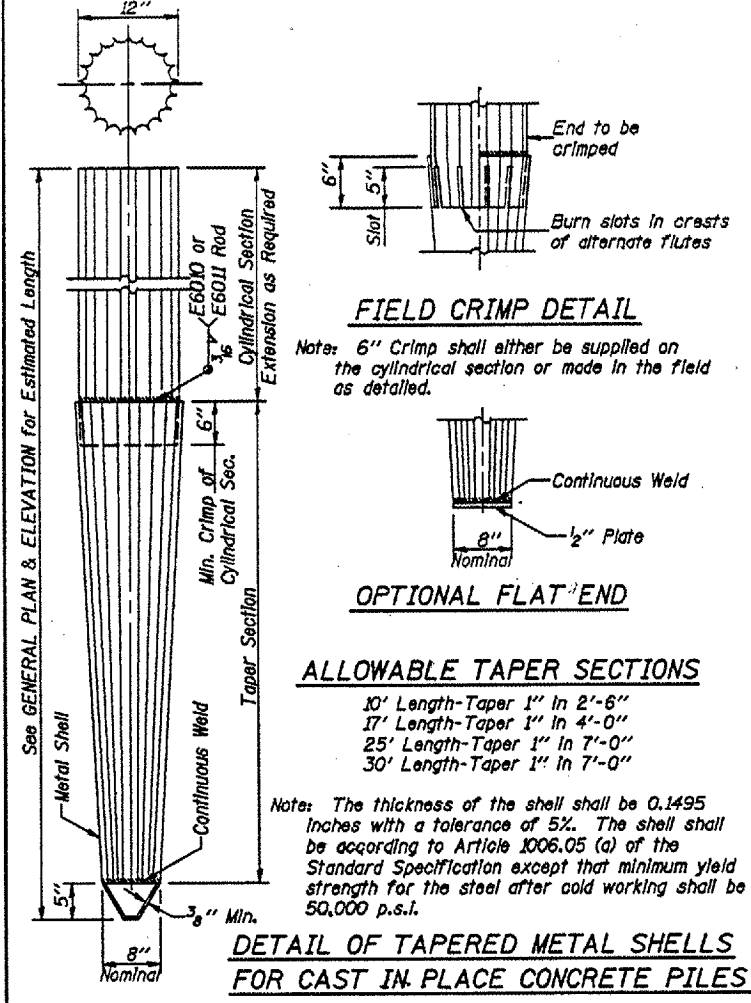


**SECTION A-A
FOR PILES UNDER
45' LONG**

**SECTION A-A
FOR PILES 45'
OR MORE**

Handling: For Pile lengths up to 45' use two slings placed at a distance of 0.21L from each end. For Piles longer than 45', use three slings placed at a distance of 0.12L from each end and at mid point of pile.

**DETAIL OF PRECAST
CONCRETE PILES**



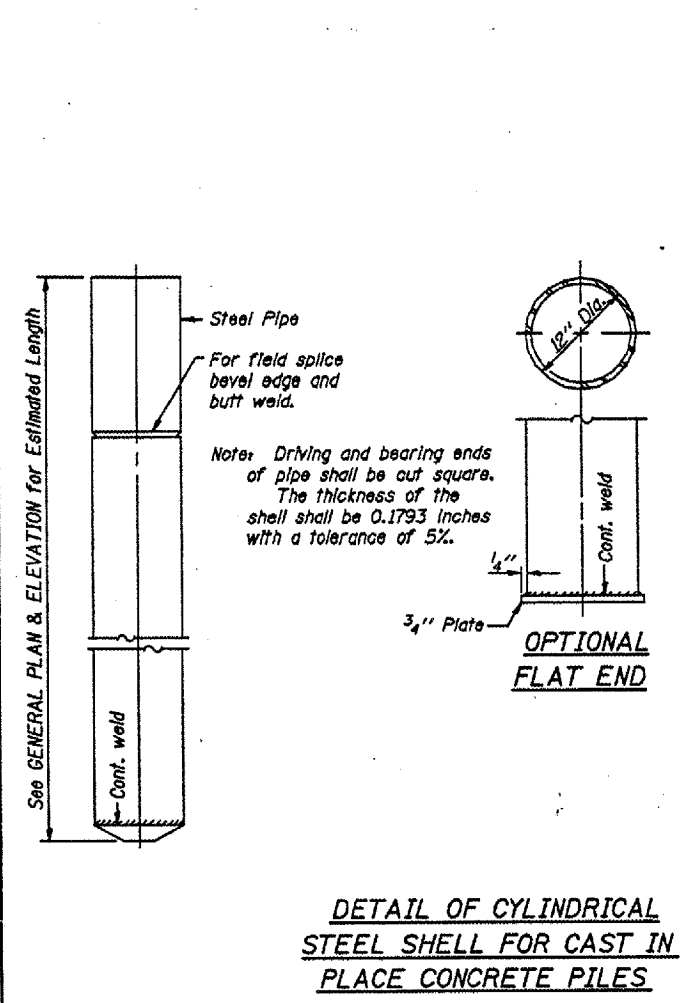
FIELD CRIMP DETAIL

OPTIONAL FLAT END

ALLOWABLE TAPER SECTIONS

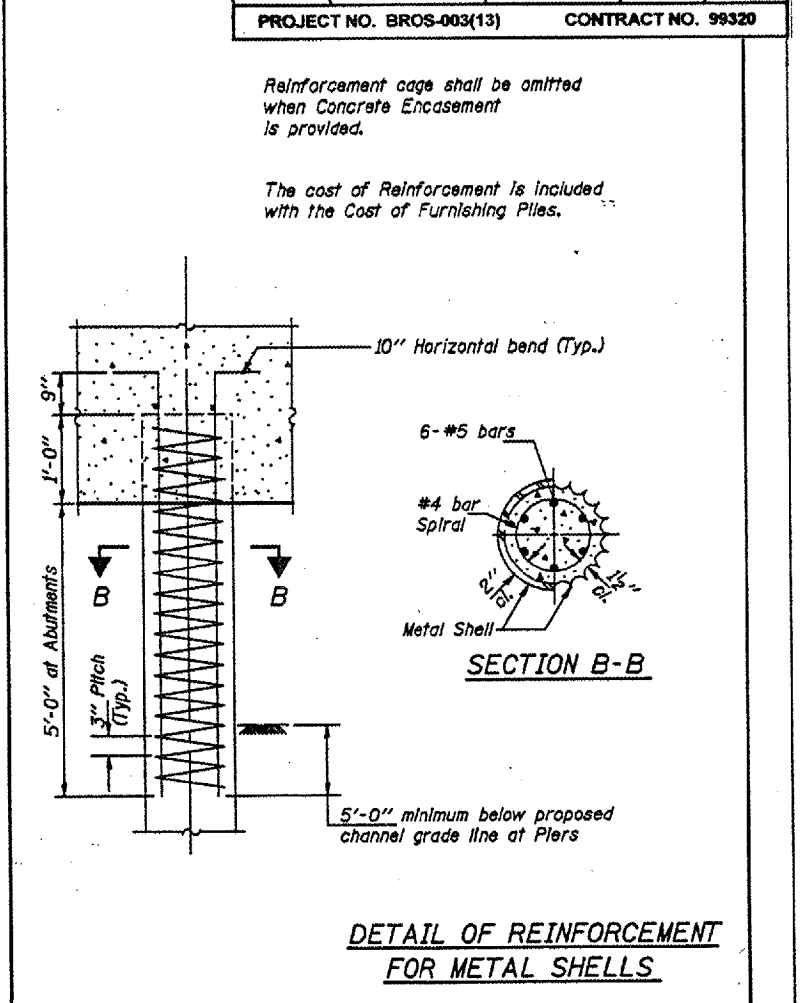
Note: The thickness of the shell shall be 0.1495 inches with a tolerance of 5%. The shell shall be according to Article 1006.05 (a) of the Standard Specification except that minimum yield strength for the steel after cold working shall be 50,000 p.s.i.

**DETAIL OF TAPERED METAL SHELLS
FOR CAST IN-PLACE CONCRETE PILES**



**OPTIONAL
FLAT END**

**DETAIL OF CYLINDRICAL
STEEL SHELL FOR CAST IN
PLACE CONCRETE PILES**



SECTION B-B

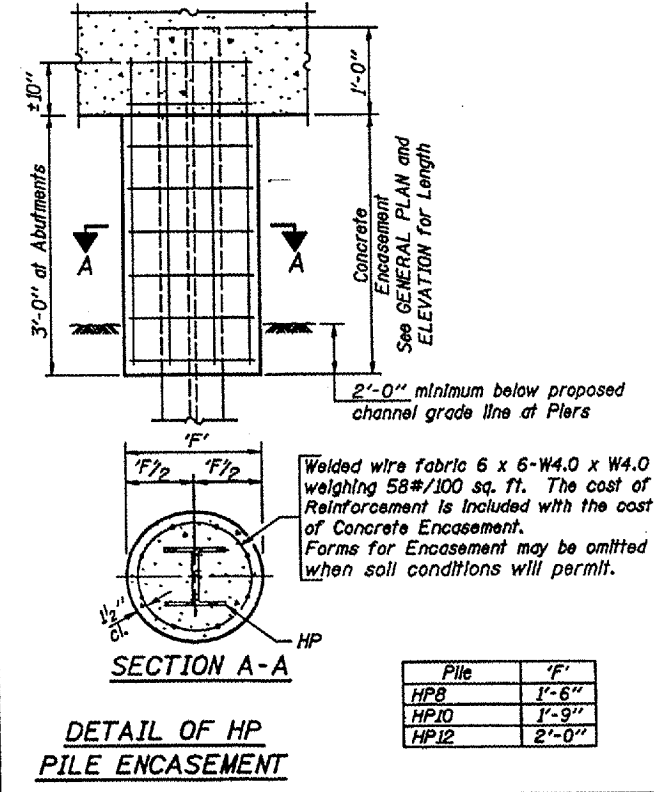
**DETAIL OF REINFORCEMENT
FOR METAL SHELLS**

**QUANTITIES/FT. OF ENCASEMENT
(STEEL PILES)**

Pile Size	Item	Quantity
HP8	Concrete Encasement	0.063 C.Y.
HP10	Concrete Encasement	0.086 C.Y.
HP12	Concrete Encasement	0.112 C.Y.

(METAL SHELL PILES)

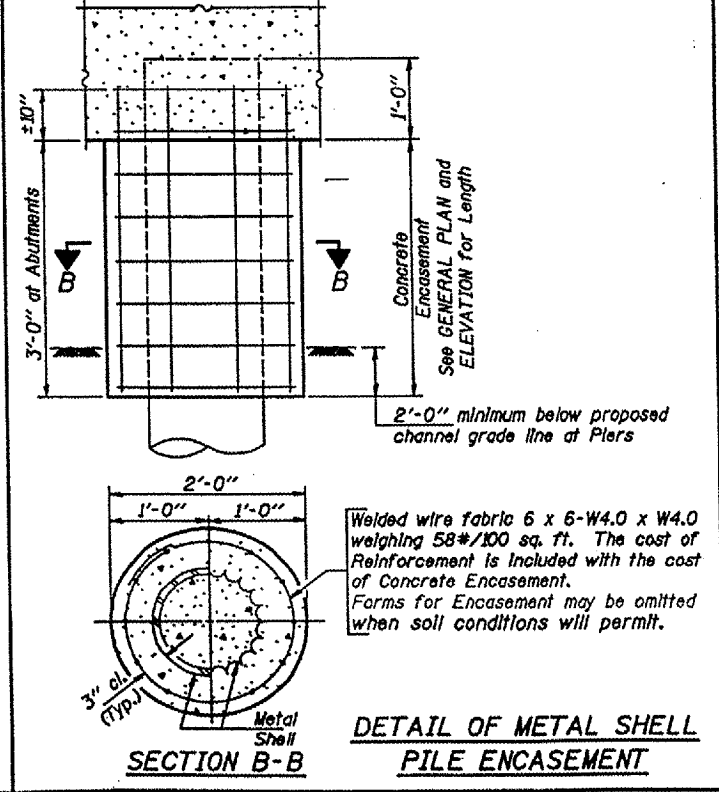
Pile Size	Item	Quantity
12" Dia.	Concrete Encasement	0.087 C.Y.



SECTION A-A

**DETAIL OF HP
PILE ENCASEMENT**

Pile	'F'
HP8	1'-6"
HP10	1'-9"
HP12	2'-0"



SECTION B-B

**DETAIL OF METAL SHELL
PILE ENCASEMENT**

PILE DETAILS

STANDARD CX-1

Illinois Department of Transportation

PASSED FEBRUARY 1, 2000

Approved by: *Thomas J. Hensel*
Engineer of Bridge Design

APPROVED FEBRUARY 1, 2000

Approved by: *Robert E. Anderson*
Engineer of Bridges and Structures