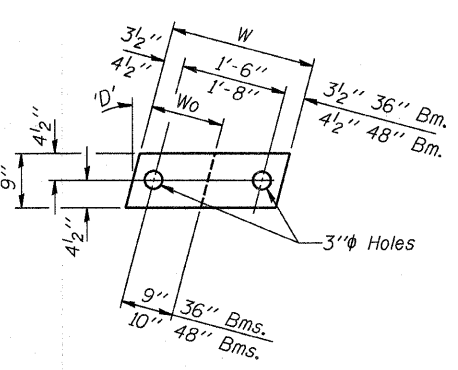
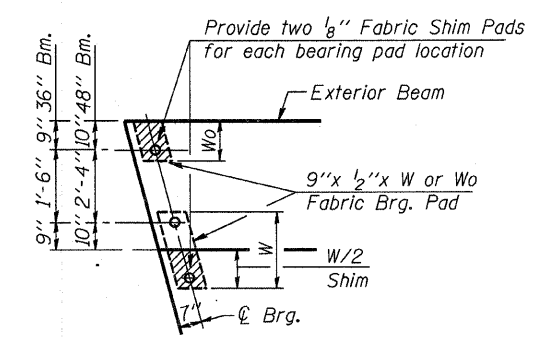
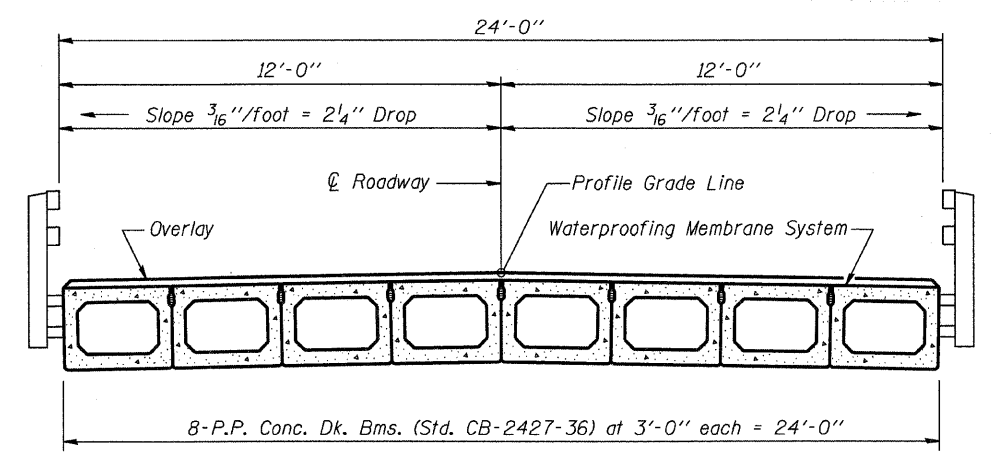


TYPICAL ELEVATIONS

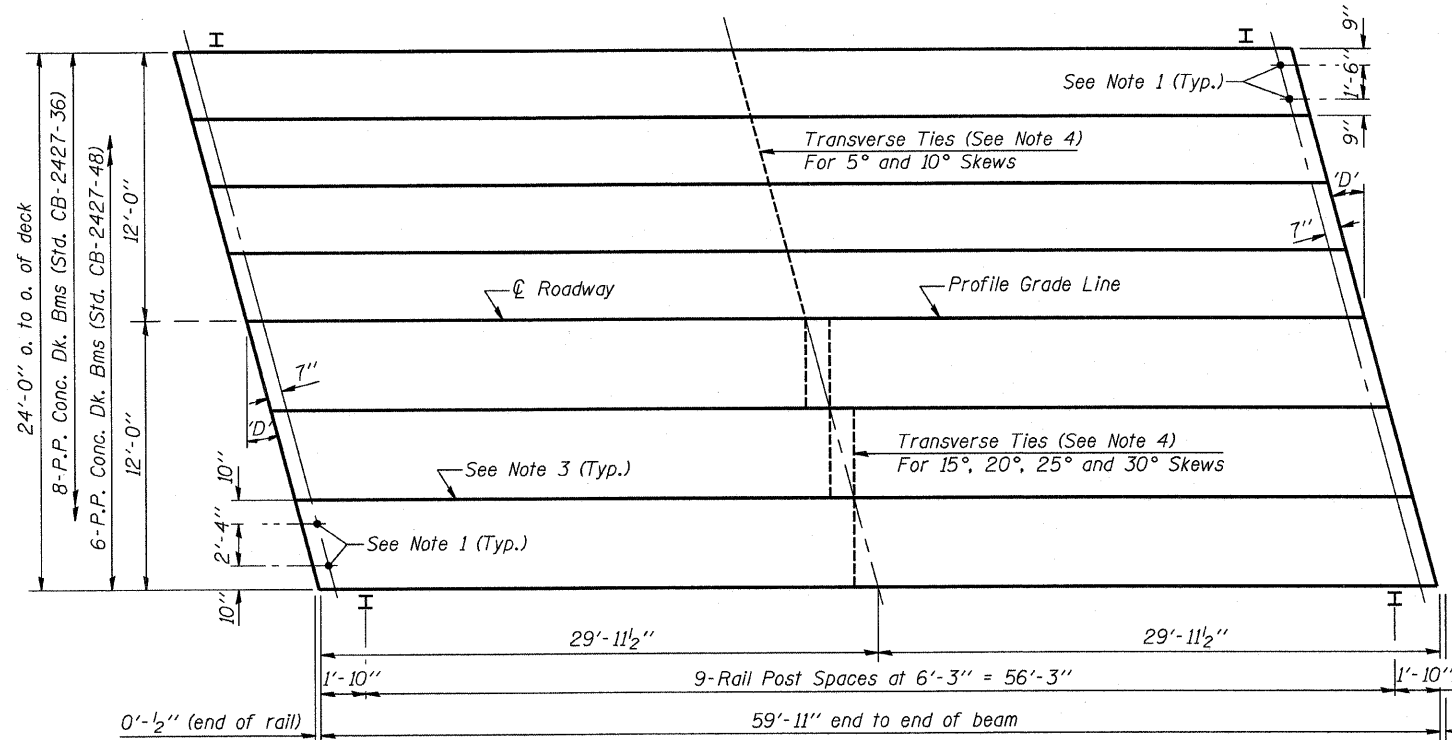
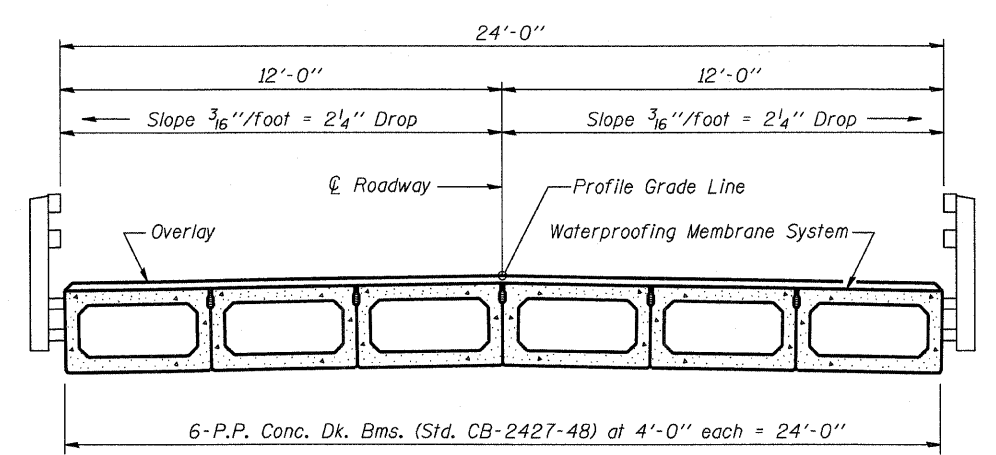


| Beam | W     | Wo        |
|------|-------|-----------|
| 36"  | 2'-1" | 1'-0 1/2" |
| 48"  | 2'-5" | 1'-2 1/2" |

1/2" FABRIC BRG. PAD DETAILS

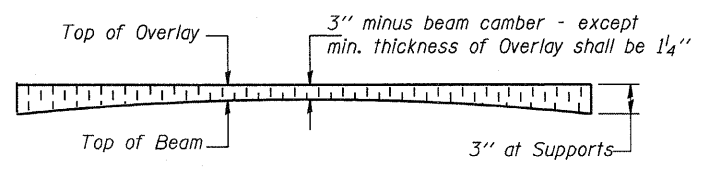


CROSS SECTION



PLAN

('D' = Designated Skew Angle)

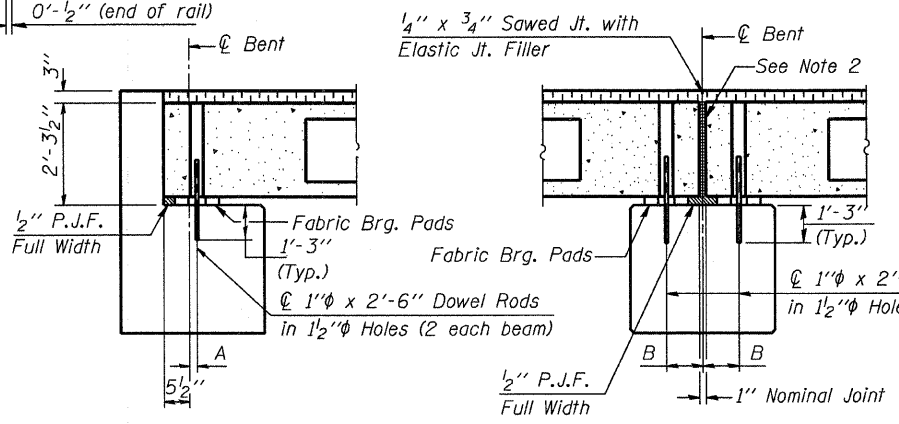


PROFILE OF OVERLAY

DIMENSIONS 'A' AND 'B'

| 'D' | 5°     | 10°    | 15°    | 20°    | 25°    | 30°    |
|-----|--------|--------|--------|--------|--------|--------|
| A   | 1 1/2" | 1 5/8" | 1 3/4" | 1 7/8" | 2 1/4" | 2 5/8" |
| B   | 7 1/2" | 7 5/8" | 7 3/4" | 8"     | 8 1/4" | 8 5/8" |

- NOTES**
- After beams have been erected, holes shall be drilled into substructure and anchor dowels placed. Dowel holes shall be filled with non-shrink grout to top of beam and allowed to cure min. 24 hrs. prior to grouting the shear keys.
  - Nominal 1" joint at centerline pier shall be filled with non-shrink grout.
  - Longitudinal keys shall be grouted.
  - The 1" diameter rods in the transverse tie assembly shall be tightened to a snug fit and the threads set. Pockets that receive transverse tie bar outside shall be filled with grout after transverse tie assembly is in place.



SECTION AT ABUTS.  
(Along centerline Beams)

SECTION AT PIERS  
(Along centerline Beams)

QUANTITIES FOR ONE SPAN

|                               |                |
|-------------------------------|----------------|
| P.P. Conc. Dk. Bm. 27" Dp.    | 1440 Sq. Ft.   |
| Steel Railing                 | 120 Ft.        |
| Waterproofing Membrane System | 160.0 Sq. Yds. |
| Portland Cement Mortar        | 420 Ft. 36"    |
| Fairing Course                | 300 Ft. 48"    |

Note: Quantity of overlay for one span = 18.0 Tons

| P.P.C. DECK BEAM SUPERSTRUCTURE |          |          |       |
|---------------------------------|----------|----------|-------|
| 24' RDWY.                       | 27" BMS. | 60' SPAN | RIGHT |
| STANDARD CS-2427-60R            |          |          |       |

Illinois Department of Transportation  
PASSED APRIL 4, 2005  
Thomas S. Damagala, Jr.  
Engineer of Bridge Design  
APPROVED APRIL 4, 2005  
Ralph E. Anderson  
Engineer of Bridges and Structures