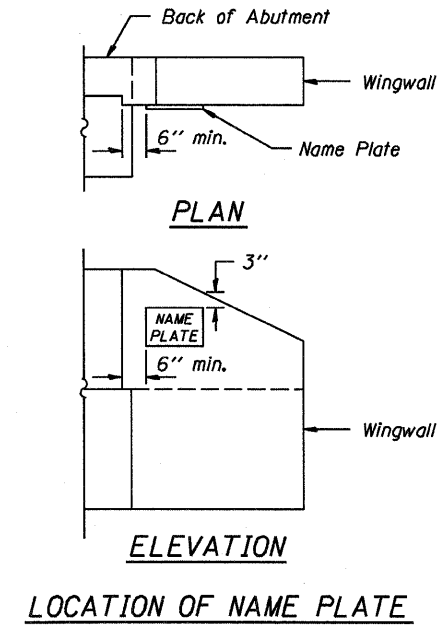


Material: Best quality brass or bronze.  
 Border & Lettering: Raised  $\frac{1}{8}$  inch. Square cut and not tapered. Top surface polished.  
 Fastenings: Four lugs at least three inches long, cast on back of plate.



Illinois Department of Transportation

PASSED APRIL 4, 2005  
*Thomas S. Demagala*  
 Engineer of Bridge Design

APPROVED APRIL 4, 2005  
*Ralph E. Anderson*  
 Engineer of Bridges and Structures

ISSUED 7-1-995

NAME PLATE
STANDARD CN