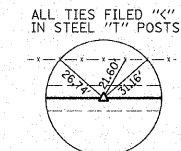
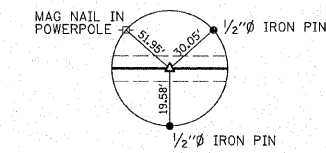


T.R.	SECTION	COUNTY	TOTAL SHEETS	SHEET NO.
505B	06-10118-00-BR	JEFFERSON	17	4
STA. 7+75		TO STA. 22+25		
FED. ROAD DIST. NO.		ILLINOIS CONTRACT NO. 99325		
MOORES PRAIRIE ROAD DISTRICT				

**MARSHALL MARION CROSS**  
SE 1/4, SEC 15, T. 4 S., R. 4 E., 3RD P.M.

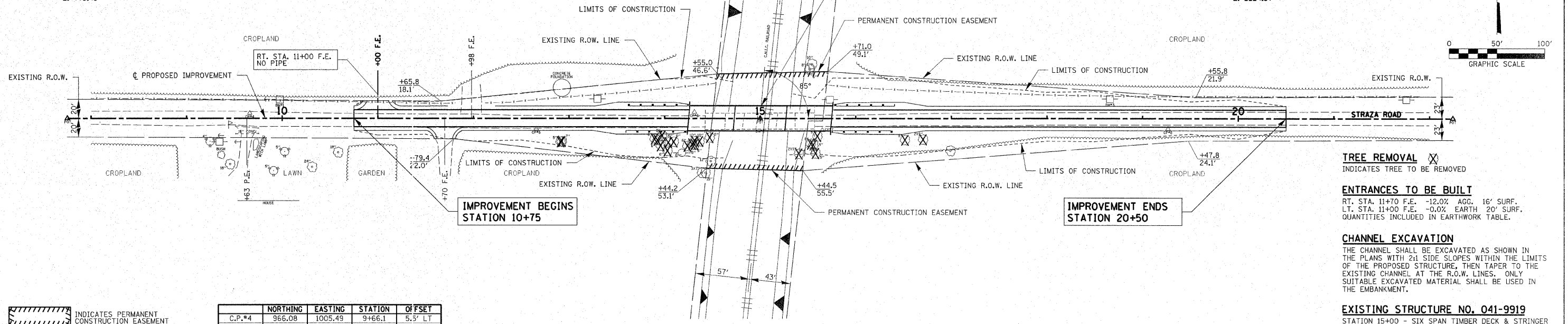


P.O.T. STA. 7+75.43  
1/2" Ø IRON PIN (SET)  
N. 1000.00  
E. 775.43

P.O.T. STA. 15+00.00  
MAG NAIL (SET)  
N. 1000.00  
E. 1500.00

P.O.T. STA. 22+24.37  
1/2" Ø IRON PIN (SET)  
N. 1000.00  
E. 2224.37

STATION 15+00 = M.P. 51.90  
SPECIAL BRIDGE DESIGN  
PRECAST PRESTRESSED CONCRETE DECK BEAM  
BRIDGE, 3 SPANS: 47'-0", 54'-0", 47'-0"  
26'-4" ROWW; SKEW = 5°  
PROPOSED STRUCTURE NO. 041-9930



	NORTHING	EASTING	STATION	OFFSET
C.P.*4	966.08	1005.49	9+66.1	5.5' LT
C.P.*5	1265.76	988.73	12+65.8	11.3' RT
C.P.*6	1431.21	1006.66	14+31.2	6.7' LT
C.P.*7	1564.92	987.40	15+64.9	12.6' RT
C.P.*8	1926.54	988.79	19+26.5	11.2' RT

INDICATES PERMANENT CONSTRUCTION EASEMENT

INDICATES TEMPORARY CONSTRUCTION EASEMENT

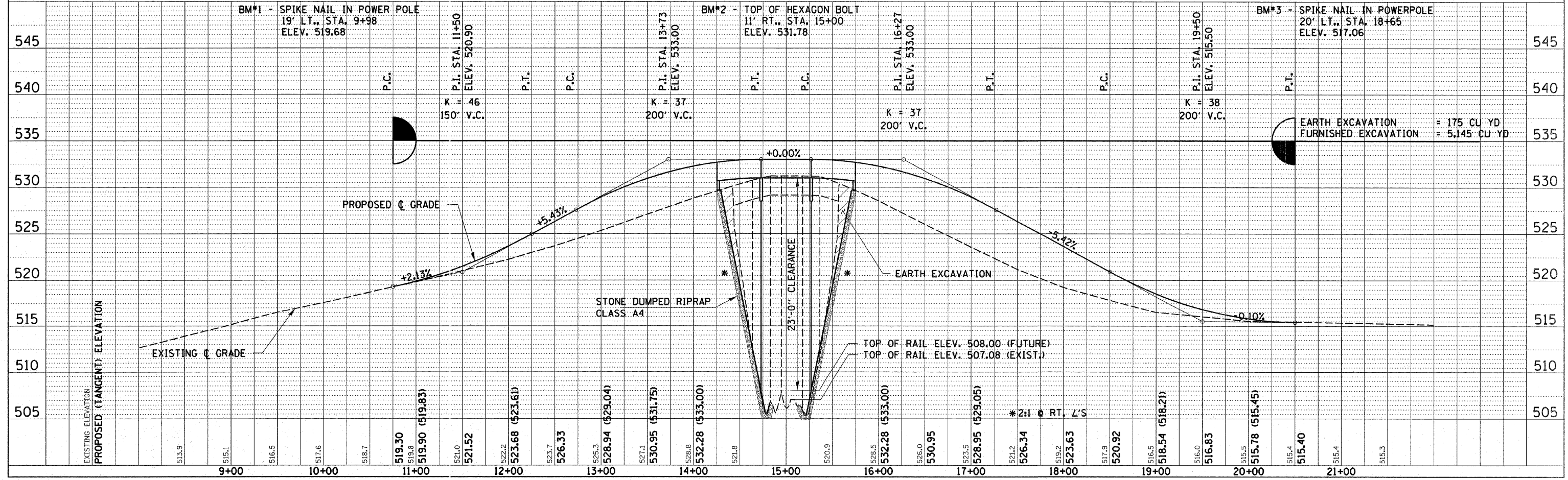
**TREE REMOVAL** ✕  
INDICATES TREE TO BE REMOVED

**ENTRANCES TO BE BUILT**  
RT. STA. 11+70 F.E. -12.0% AGG. 16' SURF.  
LT. STA. 11+00 F.E. -0.0% EARTH 20' SURF.  
QUANTITIES INCLUDED IN EARTHWORK TABLE.

**CHANNEL EXCAVATION**  
THE CHANNEL SHALL BE EXCAVATED AS SHOWN IN THE PLANS WITH 2:1 SIDE SLOPES WITHIN THE LIMITS OF THE PROPOSED STRUCTURE, THEN TAPER TO THE EXISTING CHANNEL AT THE R.O.W. LINES. ONLY SUITABLE EXCAVATED MATERIAL SHALL BE USED IN THE EMBANKMENT.

**EXISTING STRUCTURE NO. 041-9919**  
STATION 15+00 - SIX SPAN TIMBER DECK & STRINGER BRIDGE ON TIMBER PILE ABUTMENTS & PIERS WITH TIMBER WINGWALLS & TIMBER HANDRAILS. INCLUDES REMOVAL OF CONCRETE BIN FOUNDATION LOCATED LT. OF STA. 12+95. 112.4' FC-FC. ABUTS; 17.3' o-o. DECK REMOVAL OF EXISTING STRUCTURES = 1 EACH

**PHILIP I. SCHLAG** NE 1/4, SEC 22, T. 4 S., R. 4 E., 3RD P.M.  
**HENRIETTA DUNAVAN** NE 1/4, NE 1/4, SEC 22, T. 4 S., R. 4 E., 3RD P.M.



**BM\*1 - SPIKE NAIL IN POWER POLE**  
19' LT., STA. 9+98  
ELEV. 519.68

**BM\*2 - TOP OF HEXAGON BOLT**  
11' RT., STA. 15+00  
ELEV. 531.78

**BM\*3 - SPIKE NAIL IN POWERPOLE**  
20' LT., STA. 18+65  
ELEV. 517.06

**EARTH EXCAVATION** = 175 CU YD  
**FURNISHED EXCAVATION** = 5,145 CU YD

DATE: [ ] BY: [ ]  
REVISION: [ ]  
PROFILE GRADES CHECKED: [ ]  
STRUCTURE NOTATING CHKD: [ ]

VERTICAL CURVE DATA:  
K = 46, 150' V.C.  
K = 37, 200' V.C.  
K = 37, 200' V.C.  
K = 38, 200' V.C.