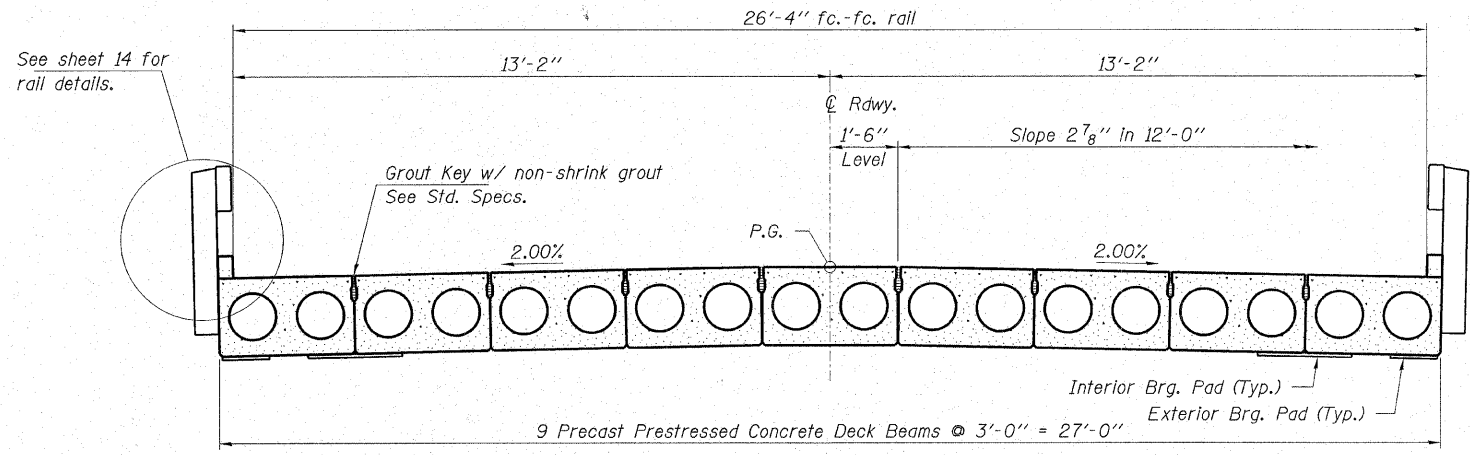
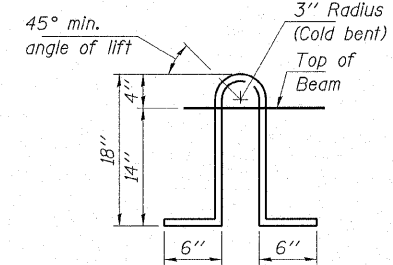


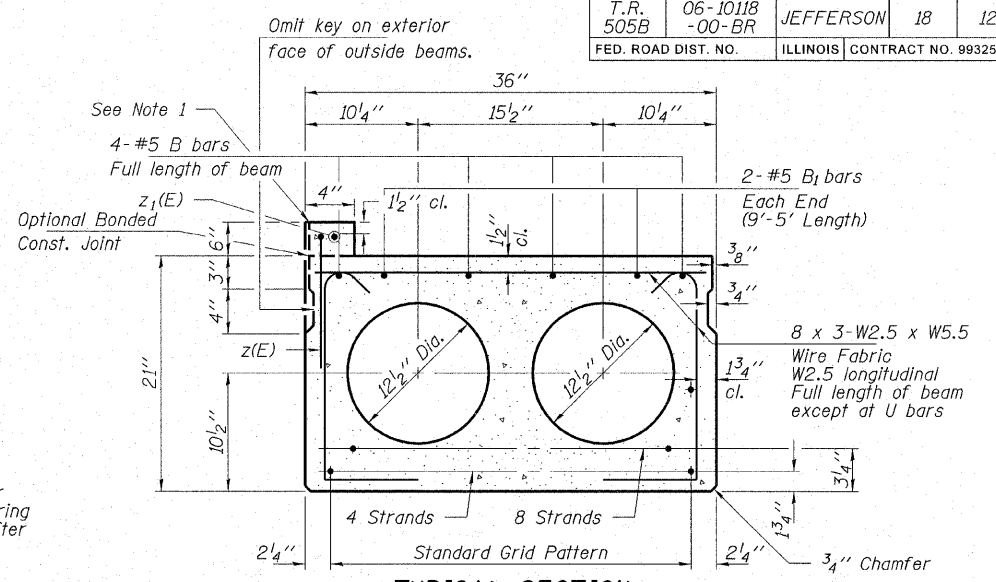
ROUTE NO.	SECTION	COUNTY	TOTAL SHEETS	SHEET NO.
T.R. 505B	06-10118-00-BR	JEFFERSON	18	12
FED. ROAD DIST. NO.		ILLINOIS	CONTRACT NO. 99325	



CROSS SECTION

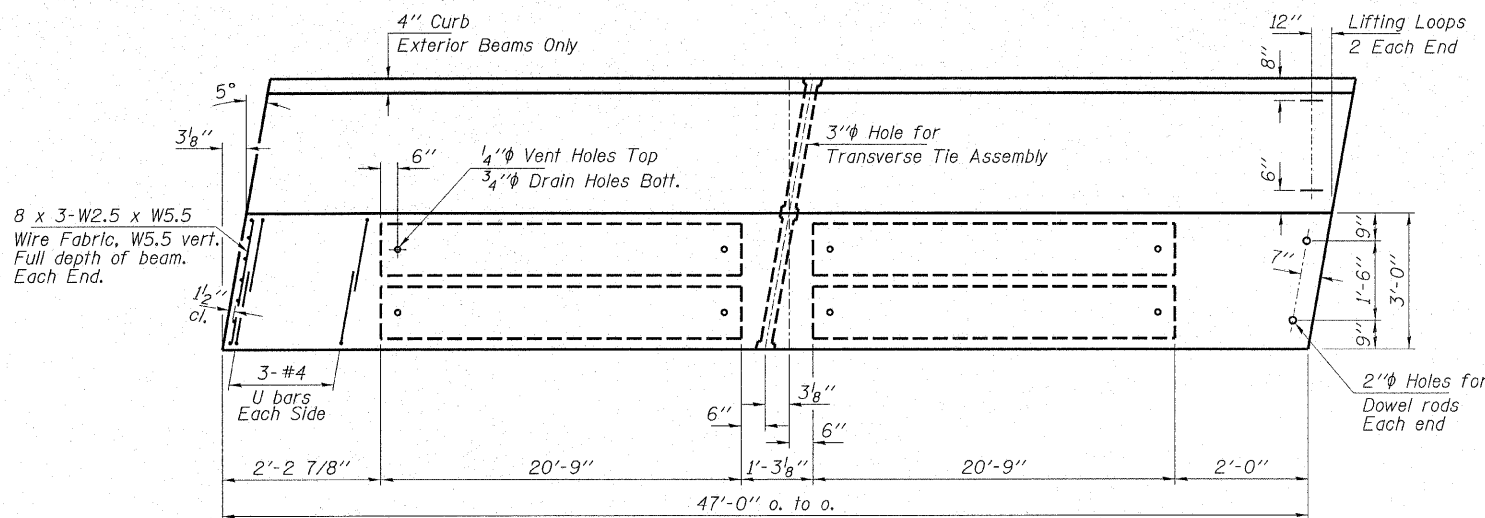


LIFTING LOOP DETAIL
Approved alternate may be substituted for the above detail.

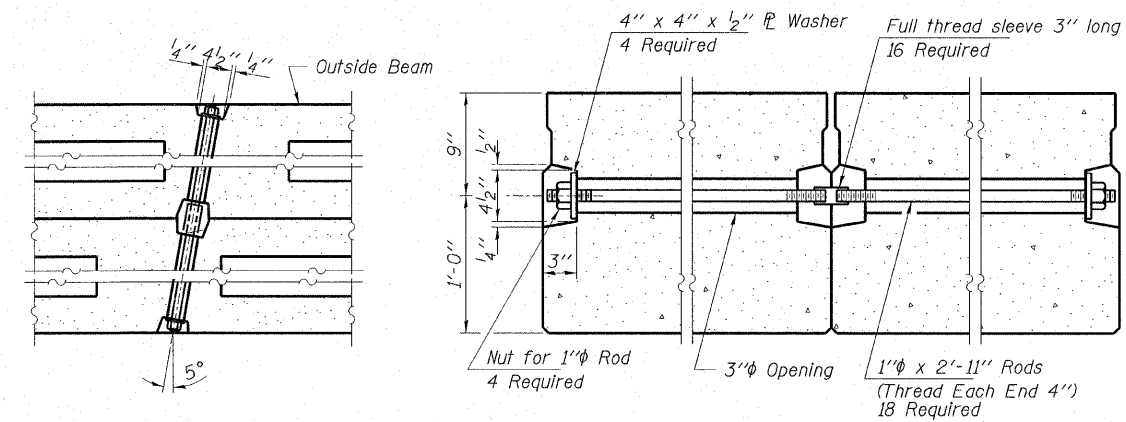


TYPICAL SECTION

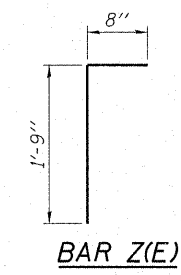
12-1/2" Dia. Strands, Each Strand Stressed to 30,900 Lbs.
4-Strands 1 3/4" up, 8-Strands 3 1/4" up
Expected Camber = 1"



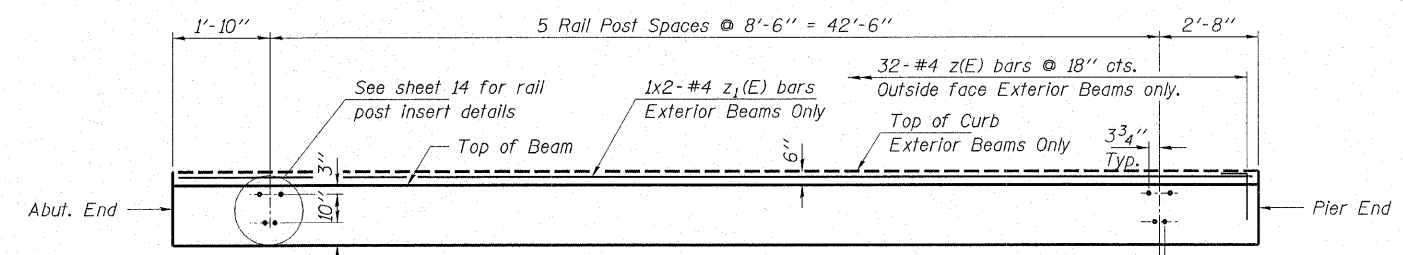
PLAN



TYPICAL TRANSVERSE TIE ASSEMBLY



BAR Z(E)

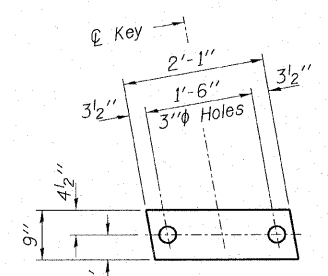


ELEVATION OF OUTSIDE BEAMS

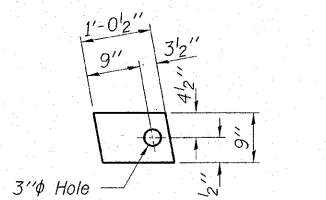
Showing Rail Post Spacing

BAR	NO.	SIZE	LENGTH	SHAPE
z(E)	128	#4	2'-5"	U
z1(E)	8	#4	24'-0"	—

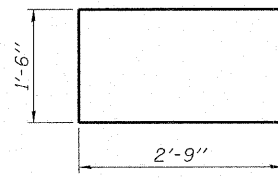
For information only.
Cost included in deck beams.



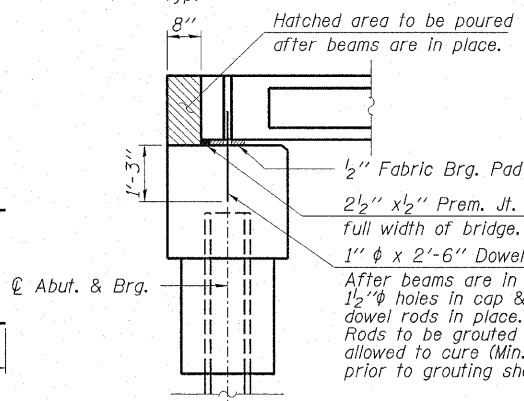
FABRIC BEARING PAD
(Interior - 32 Req'd)



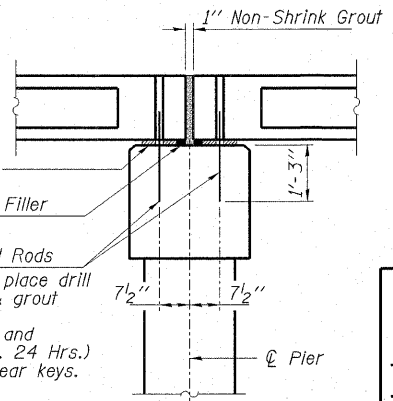
FABRIC BEARING PAD
(Exterior - 8 Req'd)



BAR U



SECTION AT ABUTMENTS



SECTION AT PIERS

NOTES

The exterior beams shall be cast with a 4" wide x 6" high concrete curb with reinforcement cast integrally with the beam. The z(E) and z1(E) bars shall be included in the unit cost for deck beams. Prestressing steel shall be uncoated high strength, low-relaxation 7-wire strand, Grade 270. The nominal diameter shall be 1/2" and the nominal cross-sectional area shall be 0.153 sq. in. Lifting loops shall be 2-1/2" dia 270 ksi strands, as shown.

The 1" rods in the transverse tie assembly shall be tightened to a snug fit and the threads set. Pockets that receive transverse tie bar on outside shall be filled with grout after transverse tie assembly is in place.

Reinforcement bars shall conform to the requirements of ASTM A 706 Gr 60 (IL Modified). See Special Provisions.

The bearing seat surfaces shall be adjusted by shimming to assure firm and even bearing. Two 3/8" fabric adjusting shims of the dimensions of the Exterior Bearing Pad shall be provided for each bearing.

Keyway surfaces shall be cleaned to remove form oil or other bond breaking material prior to shipment of the beams. Cleaning shall be done by sandblasting the keyway areas between top of the beam and the bottom edge of the key.

Required Release Strength, f'ci, shall be 4,000 p.s.i.

BILL OF MATERIAL

ITEM	UNIT	QUANTITY
Precast Prestressed Concrete Deck Beams (21" Depth)	Sq. Ft.	2,538

HAMPTON, LENZINI & RENWICK, INC.
CIVIL & STRUCTURAL ENGINEERS
LAND SURVEYORS

3085 STEVENSON DRIVE, SUITE 201
SPRINGFIELD, ILLINOIS 62703
(217) 546-3400

ELGIN • SPRINGFIELD

PROJECT NUMBER: 12-49-0008-1 DATE: 01/08/08
DESIGNED: R.J.P. CHECKED: M.D.C. DRAWN: D.T.M.

SUPERSTRUCTURE - SPANS 1 & 3

T.R. 505B OVER C.N./I.C. RAILROAD
SECTION 06-10118-00-BR
MOORES PRAIRIE ROAD DISTRICT
JEFFERSON COUNTY
STRUCTURE NO. 041-9930 / STATION 15+00