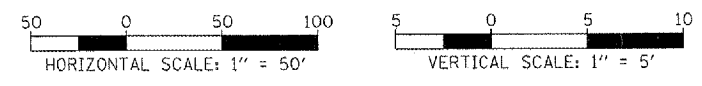
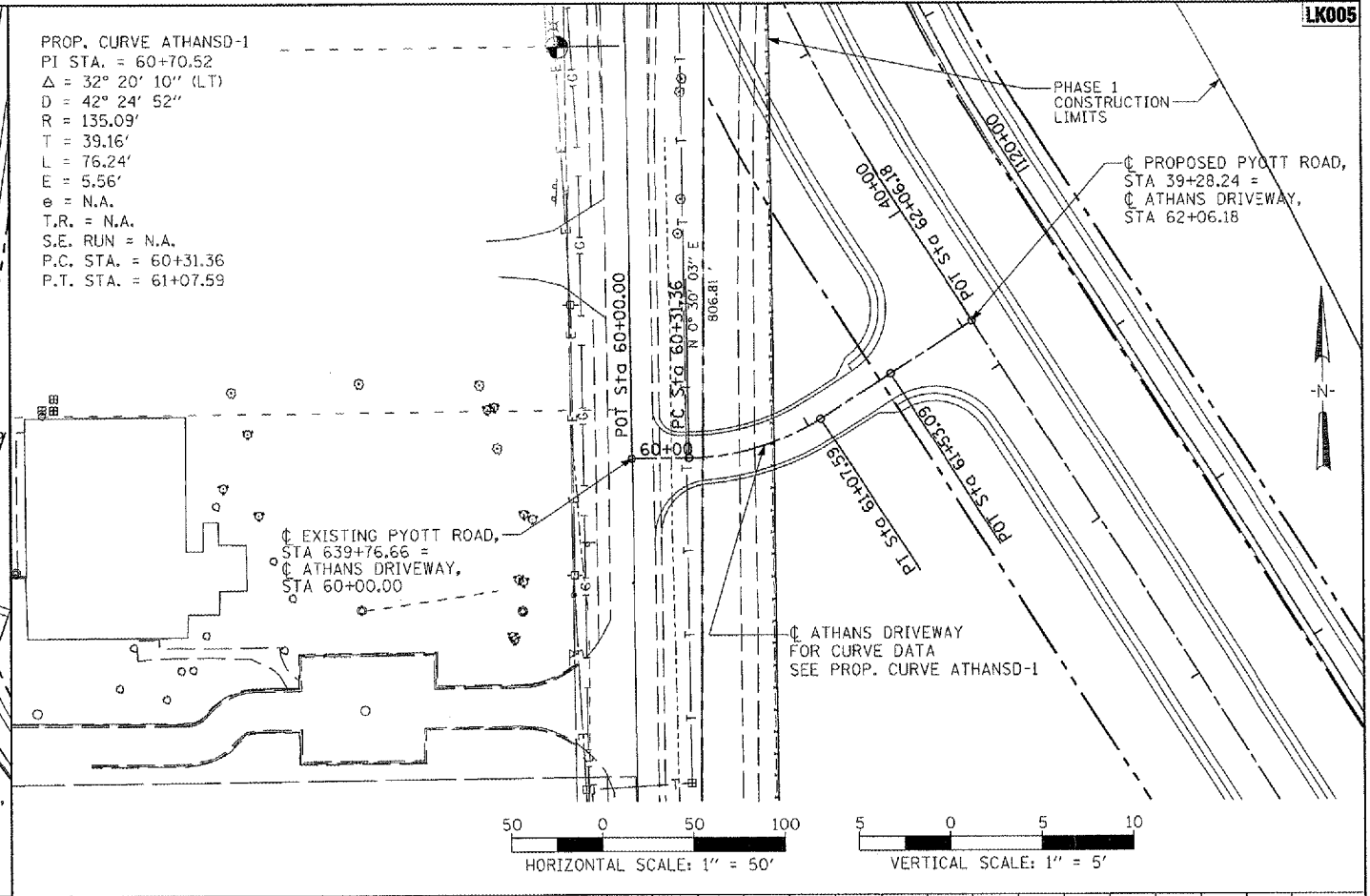
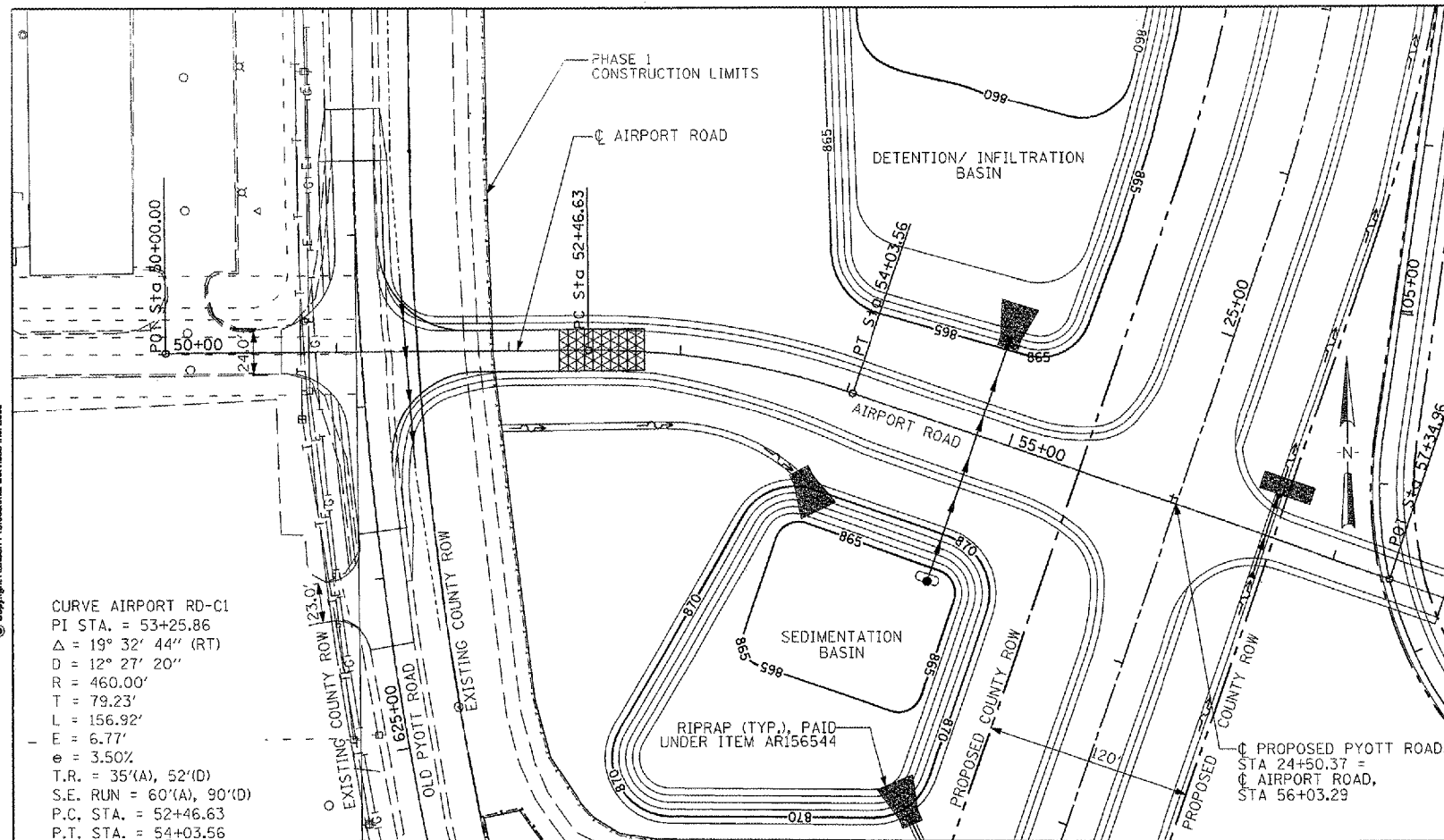


PROP. CURVE ATHANSO-1
 PI STA. = 60+70.52
 $\Delta = 32^\circ 20' 10''$ (LT)
 $D = 42' 24' 52''$
 $R = 135.09'$
 $T = 39.16'$
 $L = 76.24'$
 $E = 5.56'$
 $e = N.A.$
 $T.R. = N.A.$
 $S.E. RUN = N.A.$
 $P.C. STA. = 60+31.36$
 $P.T. STA. = 61+07.59$

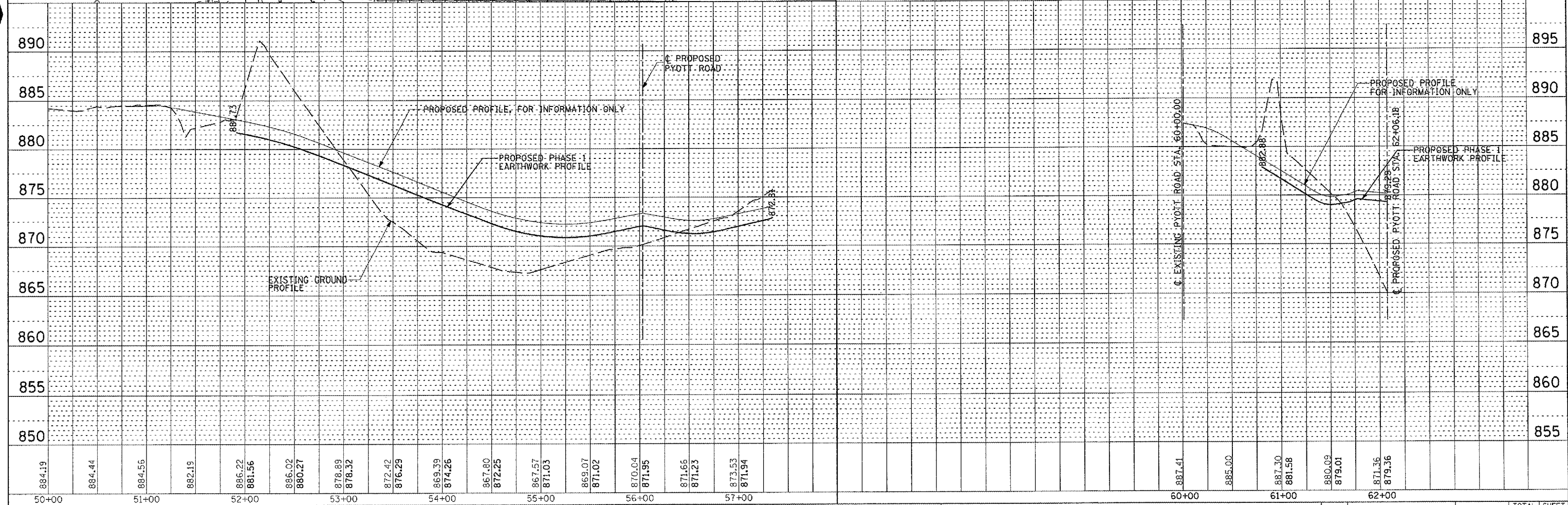
CURVE AIRPORT RD-C1
 PI STA. = 53+25.86
 $\Delta = 19^\circ 32' 44''$ (RT)
 $D = 12^\circ 27' 20''$
 $R = 460.00'$
 $T = 79.23'$
 $L = 156.92'$
 $E = 6.77'$
 $e = 3.50\%$
 $T.R. = 35'(A), 52'(D)$
 $S.E. RUN = 60'(A), 90'(D)$
 $P.C. STA. = 52+46.63$
 $P.T. STA. = 54+03.56$



Hanson Professional Services Inc.
 Suite 200, 815 Commerce Drive
 Oak Brook, Illinois 60523
 © Copyright Hanson Professional Services Inc. 2008



PROFILE	REVIEWED	BY	DATE
NOTE BOOK	PLOTTED		
NO.	GRADES CHECKED		
	STRUCTURE NOTATIONS CHECKED		



FILE NAME = I:\05Jobs\08841\0588221\Civil Part A\Sheet	USER NAME = McLou@10150	DESIGNED - BLB	REVISED -	VILLAGE OF LAKE IN THE HILLS, ILLINOIS	PROPOSED AIRPORT ROAD AND ATHANS DRIVEWAY ACCESS PLAN AND PROFILE	COUNTY	TOTAL SHEETS	SHEET NO.
PLOT SCALE = 100.0000' / IN.	CHECKED - SJM	REVISED -	MCHENRY			120	21	
PLOT DATE = 02/29/2008, 08:40 AM	DATE - 02/29/08	REVISED -	FEDERAL ATP NO. 3-17-012-88			ILLINOIS	IDA NO. 3CK-3671	
			SCALE: 1"=50'					