

CAST-IN-PLACE CONCRETE: ALL CONCRETE SHALL BE AIR-ENTRAINED CONTAINING NOT LESS THAN 5 PERCENT AND NO MORE THAN 8 PERCENT AIR BY VOLUME.

CONCRETE SHALL BE ITEM 610 (CLASS S1) WITH AN ULTIMATE COMPRESSIVE STRENGTH OF NOT LESS THAN 3500 PSI IN 28 DAYS. MAXIMUM SIZE OF COURSE AGGREGATE SHALL BE ONE INCH. THE MINIMUM CONCRETE COVER ON REINFORCEMENT SHALL BE TWO INCHES UNLESS INDICATED OTHERWISE. EXPOSED CONCRETE EDGES SHALL BE BEVELLED 3/4".

KEYED CONSTRUCTION JOINTS SHALL BE ABRASIVE BLAST CLEANED TO EXPOSE AGGREGATE. THESE SURFACES SHALL BE DAMPENED BEFORE ADDITIONAL CONCRETE IS PLACED. NO ADDITIONAL CONSTRUCTION JOINTS SHALL BE INSTALLED WITHOUT PRIOR APPROVAL OF THE ENGINEER.

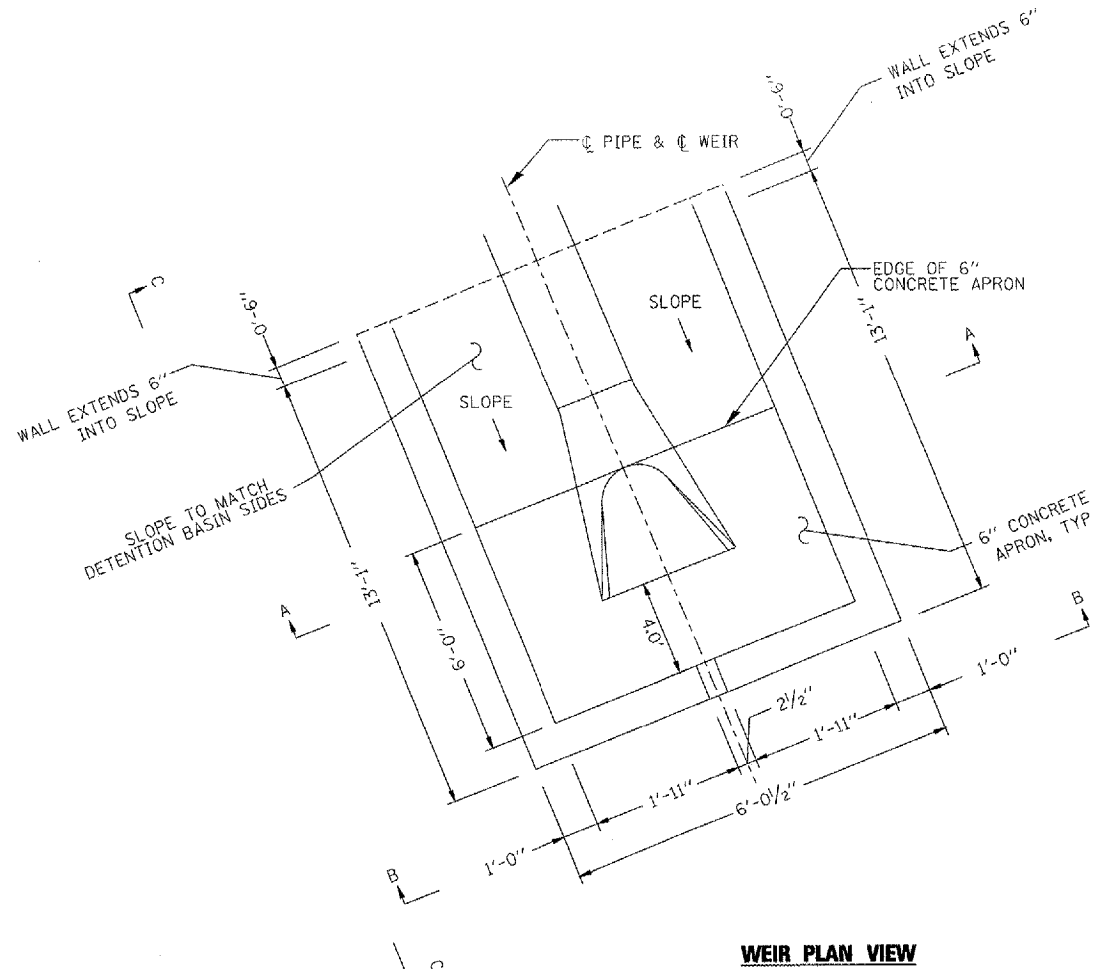
PRIOR TO PLACING CONCRETE, THE SUBGRADE SHALL BE COMPACTED TO 95 PERCENT OF STANDARD PROCTOR.

REINFORCEMENT: UNLESS NOTED OTHERWISE, STEEL BARS FOR REINFORCEMENT SHALL BE DEFORMED BILLET-STEEL BARS CONFORMING TO THE REQUIREMENTS OF THE CURRENT ASTM DESIGNATION: A615, GRADE 60 OR A706.

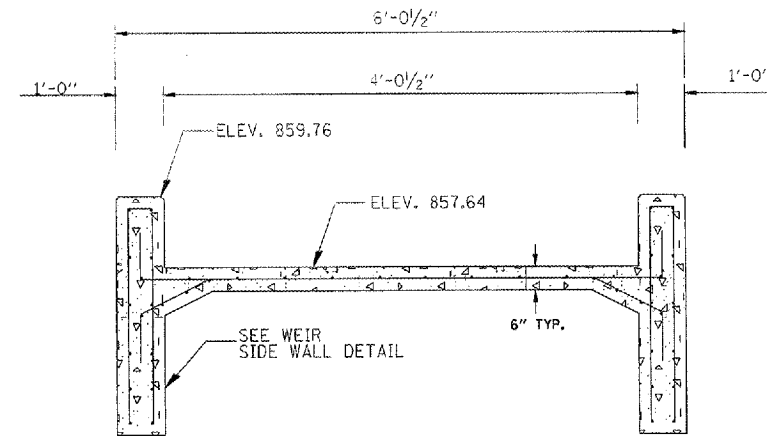
FABRICATION OF REINFORCEMENT SHALL BE IN ACCORDANCE WITH CHAPTER 7 OF THE CURRENT C.R.S.I. MANUAL OF STANDARD PRACTICE. THE REINFORCEMENT SHALL BE CONTINUOUS THROUGH ALL JOINTS.

REINFORCEMENT WIRE BAR SUPPORTS THAT ARE IN CONTACT WITH FORMS SHALL BE CLASS 1, PLASTIC PROTECTED, IN ACCORDANCE WITH CHAPTER 3 OF THE CURRENT C.R.S.I. MANUAL OF STANDARD PRACTICE.

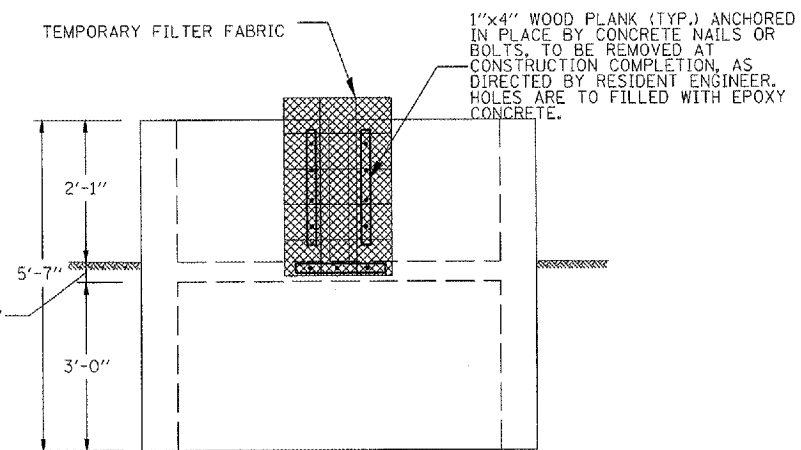
PAYMENT: ALL WORK FOR THIS ITEM WILL BE PAID UNDER ITEM AR803001.



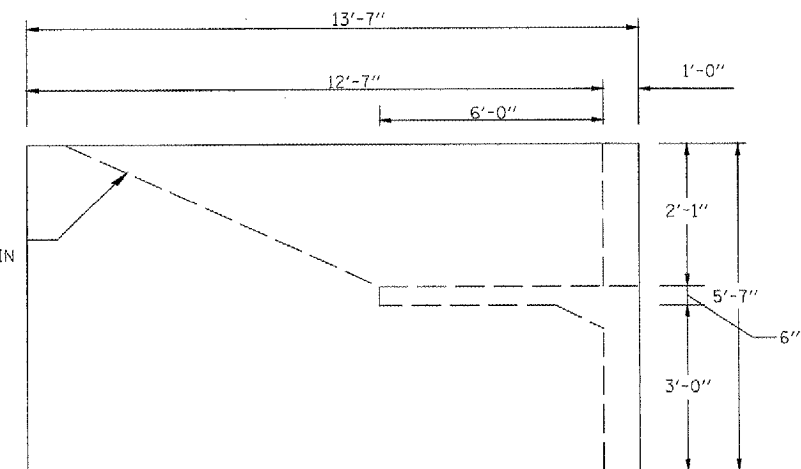
WEIR PLAN VIEW



WEIR CROSS SECTION AT A-A
(OUTLET PIPE OMITTED FOR CLARITY)



VIEW B-B - FRONT FACE



SIDE VIEW C-C

ATTENTION - UTILITY NOTE

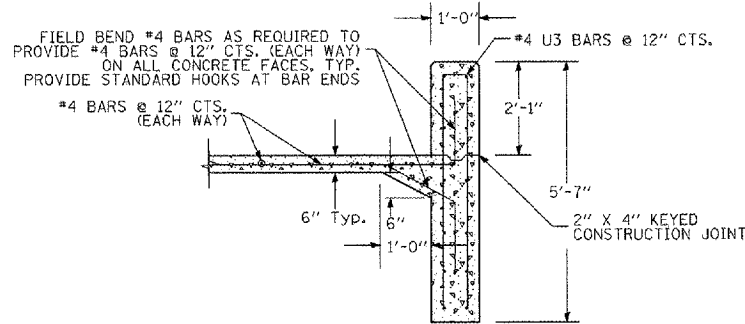
THE IMPLIED PRESENCE OR ABSENCE OF UTILITIES IS NOT TO BE CONSTRUED BY OWNER, ENGINEER, CONTRACTOR, OR SUBCONTRACTORS TO BE AN ACCURATE AND COMPLETE REPRESENTATION OF UTILITIES THAT MAY OR MAY NOT EXIST ON THE CONSTRUCTION SITE. BURIED AND ABOVE GROUND UTILITY LOCATION, IDENTIFICATION, AND MARKING ARE THE SOLE RESPONSIBILITY OF THE CONTRACTOR. REROUTING, DISCONNECTION, PROTECTION, ETC. OF ANY UTILITIES MUST BE COORDINATED AMONG THE CONTRACTOR, UTILITY COMPANY, AND OWNER. SITE SAFETY, INCLUDING THE AVOIDANCE OF HAZARDS, ASSOCIATED WITH BURIED AND ABOVEGROUND UTILITIES REMAINS THE SOLE RESPONSIBILITY OF THE CONTRACTOR.

NOTE: PROVIDE #4 BARS @ 12" CTS. (EACH WAY) ON ALL CONCRETE FACES, TYP.

NOTE: ADDITIONAL REINFORCEMENT BARS ARE REQUIRED IN ADDITION TO THOSE DETAILED IN THE ADJACENT TABLE. FIELD TRIM 4U3 BARS AS REQUIRED.

REINFORCING BENDING DETAILS					
MARK	SIZE	TYPE	A	B	LENGTH
4U3	4	J	8"	5'-2"	11'-0"

ALL DIMENSIONS ARE OUT-TO-OUT OF BARS



WEIR FRONT AND SIDE WALL

Hanson Professional Services, Inc.
Suite 200, 815 Commerce Drive
Oak Brook, Illinois 60523
© Copyright Hanson Professional Services, Inc. 2008



FILE NAME = I:\05Jobs\00041\0598021\Civil Part A\Sheets\VC-DR5c Weir Details.sht	USER NAME = McLou010208	DESIGNED - SJM	REVISED -	VILLAGE OF LAKE IN THE HILLS, ILLINOIS	PYOTT ROAD OUTLET WEIR DETAILS	COUNTY	TOTAL SHEETS	SHEET NO.
PLOT SCALE = 2.0000 ' / IN.	CHECKED - BLB	REVISED -	MCHENRY			120	34	
PLOT DATE = 02/27/2008, 09:54 AM	DATE - 02/29/08	REVISED -	FEDERAL AIP NO. 3-17-0112-88			ILLINOIS	IDA NO. 3CX-3871	