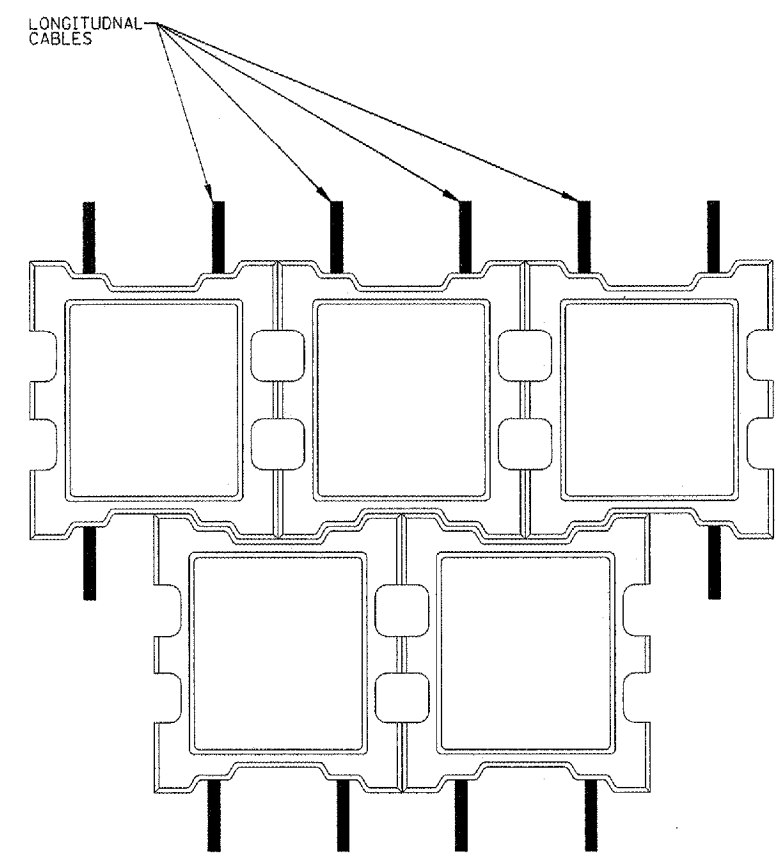
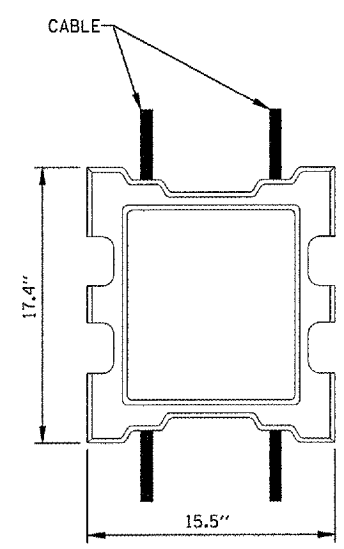


Hanson Professional Services Inc.
 Suite 200, 815 Commerce Drive
 Oak Brook, Illinois 60523
 © Copyright Hanson Professional Services Inc. 2008

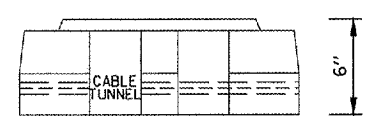


PLAN

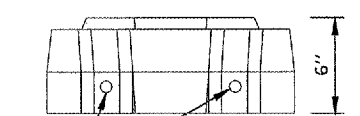


TOP VIEW

- NOTE**
1. FILTER FABRIC MEETING THE REQUIREMENTS OF ITEM AR156540 IS TO BE PLACED ON TOP OF COMPACTED SUBGRADE BEFORE ARMORFLEX BLOCK IS PLACED.
 2. COST OF FILTER FABRIC IS INCIDENTAL TO RIPRAP.
 3. ALL WORK FOR THIS ITEM PAID UNDER AR803014.

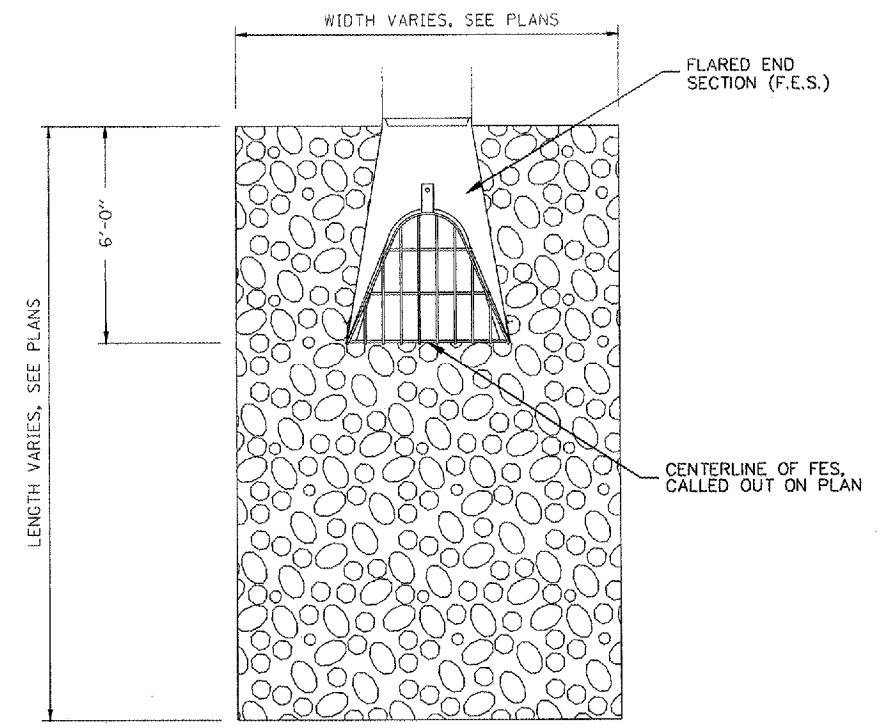


SIDE VIEW

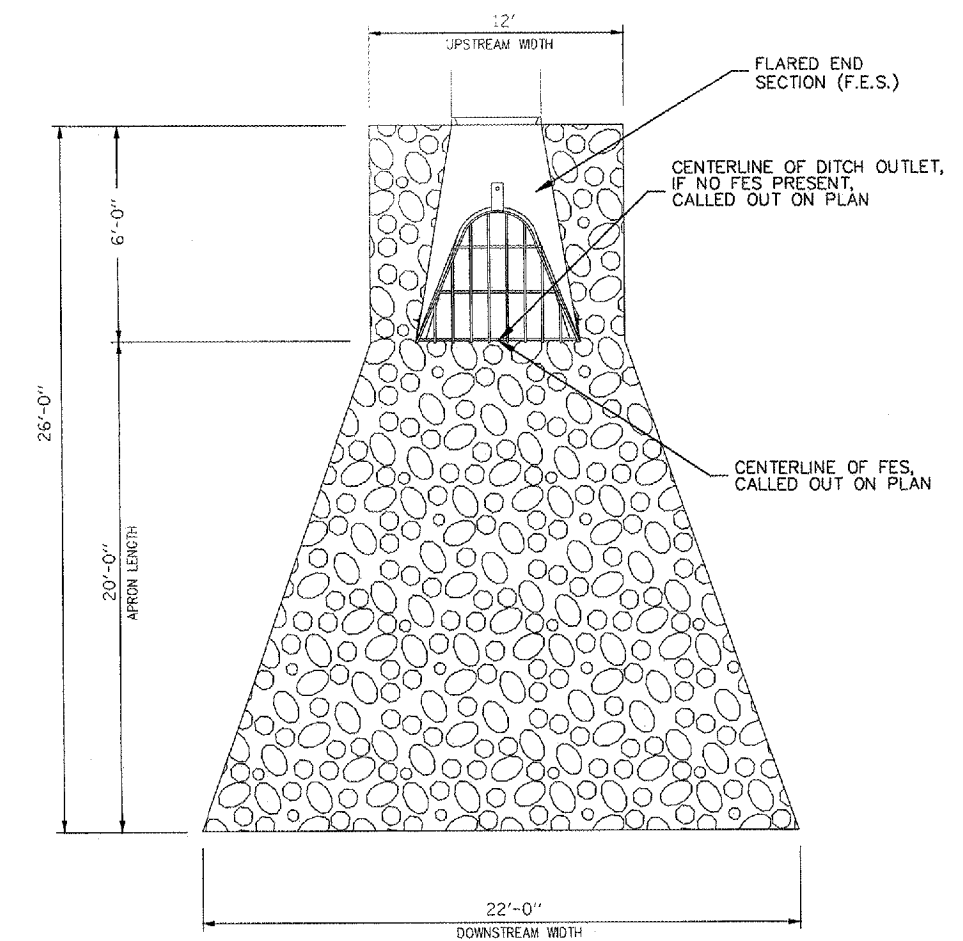


END VIEW

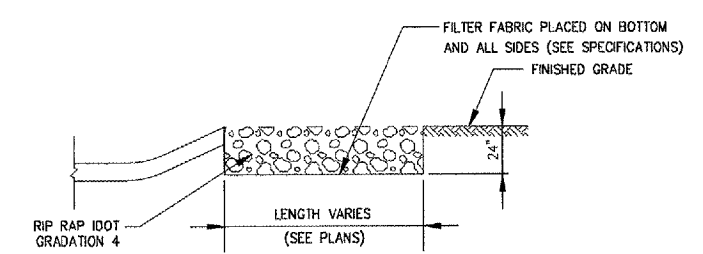
CONCRETE CABLE STANDARD DETAIL
 (ARMORFLEX CLASS 55 DIMENSIONS
 OR APPROVED EQUIVALENT)



- NOTE**
1. COST OF FILTER FABRIC IS INCIDENTAL TO RIPRAP.
 2. LENGTH (L) AND WIDTH (W) OF RIPRAP VARIES, SEE PLANS FOR DIMENSIONS OF RIPRAP.
 3. CENTERLINE OF FLARED END SECTION WILL BE CALLED OUT ON PLAN. THE WIDTH OF THE RIPRAP WILL BE CENTERED ON THIS LOCATION. THE PLACEMENT OF THE RIPRAP CAN BE DETERMINED FROM THIS LOCATION.
 4. RIPRAP WILL BE DIMENSIONED ON PLAN AS LENGTH (L) X WIDTH (W).



- NOTE**
1. COST OF FILTER FABRIC IS INCIDENTAL TO RIPRAP.
 2. CENTERLINE OF FLARED END SECTION WILL BE CALLED OUT ON PLAN. THE WIDTH OF THE RIPRAP WILL BE CENTERED ON THIS LOCATION. THE PLACEMENT OF THE RIPRAP CAN BE DETERMINED FROM THIS LOCATION.
 3. IF RIPRAP IS PLACED AT OUTLET OF DITCH, THE CENTERLINE OF THE DITCH OUTLET WILL BE CALLED OUT ON PLAN.



RIPRAP

- NOTE**
1. COST OF FILTER FABRIC IS INCIDENTAL TO RIPRAP.
 2. WIDTH (W) OF RIPRAP VARIES, SEE PLAN.

FILE NAME =	USER NAME = MoLou01058	DESIGNED - SJM	REVISED -	VILLAGE OF LAKE IN THE HILLS, ILLINOIS	PYOTT ROAD EROSION CONTROL DETAILS	COUNTY	TOTAL SHEETS	SHEET NO.
I:\05Jobs\00041\050021\Civil Part A\Sheets\NC-ERCS Details.sht	DRAWN - SJM	REVISED -	MCHENRY			120	113	
PLOT SCALE = 2.0000 ' / IN.	CHECKED - BLB	REVISED -	FEDERAL AIP NO. 3-17-0112-88			ILLINOIS	IDA NO. 3CK-3671	
PLOT DATE = 02/27/2008, 09:19 AM	DATE - 02/29/08	REVISED -						