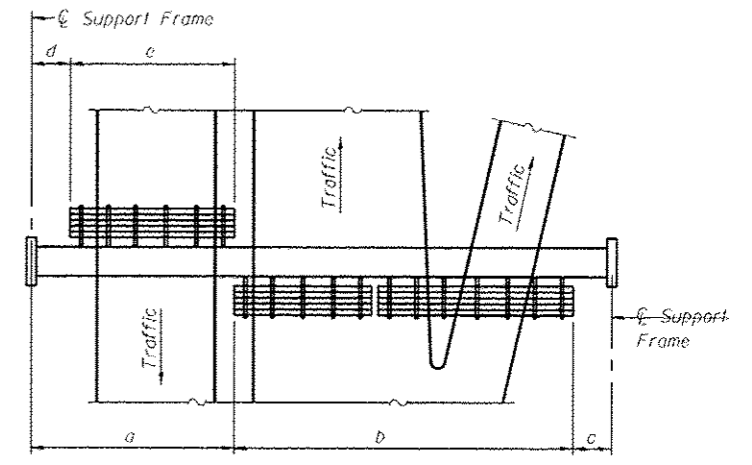
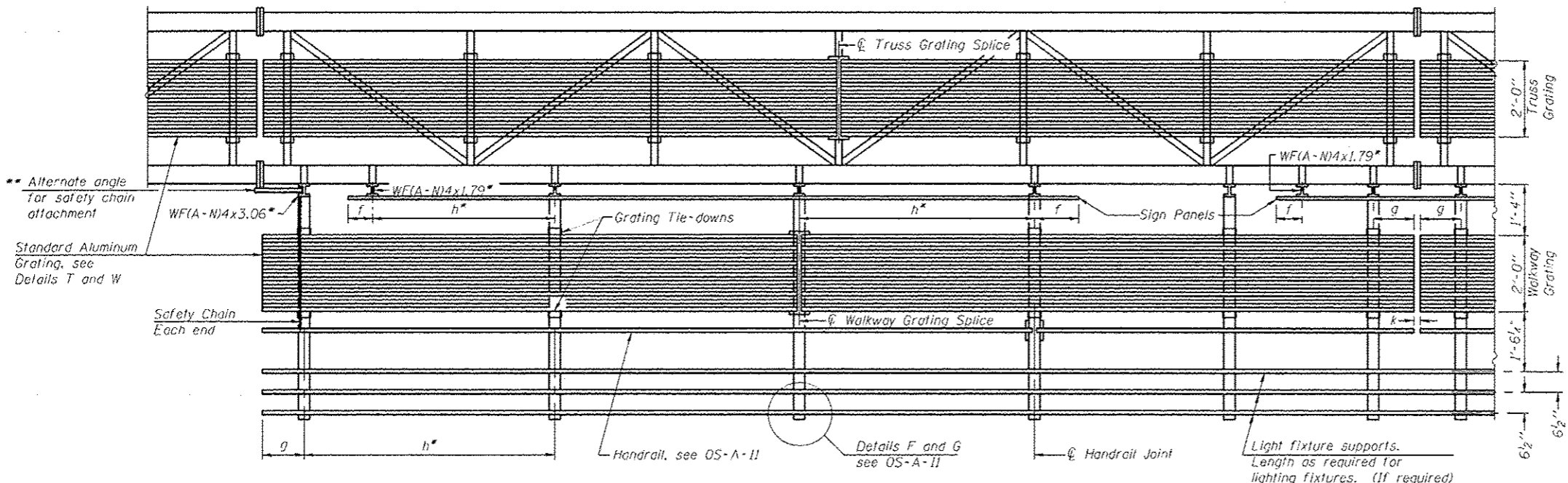


**TYPICAL FRONT ELEVATION**  
 With lights and handrail omitted for clarity.  
 For Section B-B, see Base Sheet OS-A-10.



**PLAN**  
**WALKWAY AND HANDRAIL SKETCH**  
 (Road plan beneath truss varies)



**SECTION A-A**

Handrail and walkway shall span a minimum of three brackets between splices and/or gap joints. Place all sign and walkway brackets as close to panel points as practical. Handrail joints, grating, and light support splices placed as needed.

**BRACKET TABLE**

| Sign Width   |                       | Number Brackets Required |
|--------------|-----------------------|--------------------------|
| Greater Than | Less Than or Equal To |                          |
|              | 8'-0"                 | 2                        |
| 8'-0"        | 14'-0"                | 3                        |
| 14'-0"       | 20'-0"                | 4                        |
| 20'-0"       | 26'-0"                | 5                        |
| 26'-0"       | 32'-0"                | 6                        |

- Notes:
- Space walkway brackets WF(A-N)4x3.06 and sign brackets WF(A-N)4x1.79 for efficiency and within limits shown:
  - f = 12" maximum, 4" minimum (End of sign to center of nearest bracket)
  - g = 12" maximum, 4" minimum (End of walkway grating to center of nearest support bracket)
  - h = 6'-0" maximum (center to center of sign and/or walkway support brackets, WF(A-N)4x1.79 or WF(A-N)4x3.06)
  - k = 2" maximum gap between adjacent walkway grating sections and handrail ends
  - If walkway bracket at safety chain location is behind sign, add angle to bracket, see Alternate Safety Chain Attachment on Base Sheet OS-A-11.
  - For Details T and W, Section B-B and Grating Splice Details see Base Sheet OS-A-10.
  - For Handrail Details see Base Sheet OS-A-11.

| Structure Number | Station | a     | b     | c     | d   | e   | Walkway Grating and Handrail Lengths |
|------------------|---------|-------|-------|-------|-----|-----|--------------------------------------|
| 7S0251070R090.9  | 1980+84 | 38.0' | 23.0' | 27.0' | N/A | N/A | 23.0'                                |
| 7S0251070L099.5  | 2434+20 | 37.0' | 23.0' | 28.0' | N/A | N/A | 23.0'                                |
|                  |         |       |       |       |     |     |                                      |
|                  |         |       |       |       |     |     |                                      |
|                  |         |       |       |       |     |     |                                      |
|                  |         |       |       |       |     |     |                                      |
|                  |         |       |       |       |     |     |                                      |
|                  |         |       |       |       |     |     |                                      |
|                  |         |       |       |       |     |     |                                      |
|                  |         |       |       |       |     |     |                                      |

Truss grating to facilitate inspection shall run full length (center to center of support frames) ±12" on overhead trusses. Cost of truss grating is included in "Overhead Sign Structure".

Walkway and Truss Grating width dimensions are nominal and may vary ±1/2" based on available standard widths.

OS-A-9

6-1-12