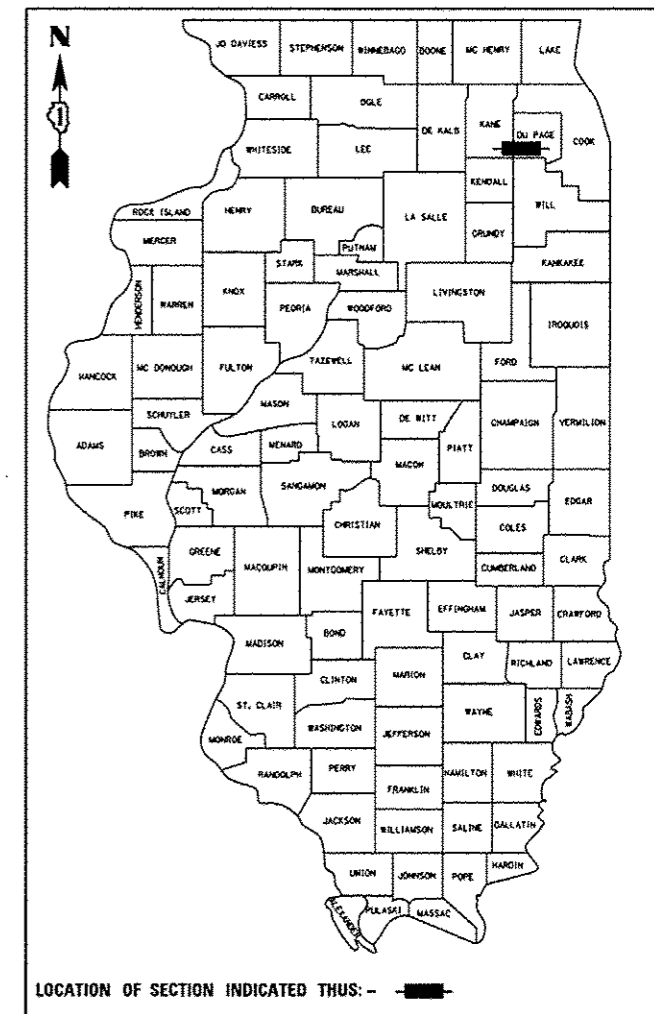


F.A.P. RTE.	SECTION	COUNTY	TOTAL SHEETS	SHEET NO.
311	652-A	DUPAGE	383	1
ILLINOIS			CONTRACT NO. 60R06	

383 + 1 = 384

D-91-032-12



STATE OF ILLINOIS
DEPARTMENT OF TRANSPORTATION
DIVISION OF HIGHWAYS

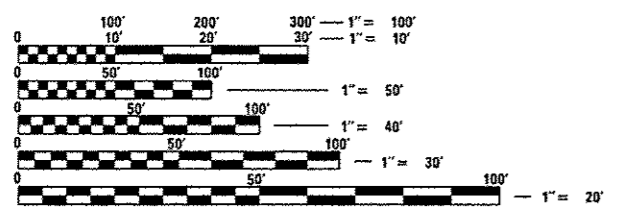
**PROPOSED
HIGHWAY PLANS**

FAP 311 - US ROUTE 34 AT CANADIAN NATIONAL RAILROAD
SECTION 652-A
RAILROAD GRADE SEPARATION
DUPAGE COUNTY
C-91-032-12

SUBSURFACE UTILITY ENGINEERING (S.U.E.)
UTILIZED ON THIS PROJECT
PROJECT LOCATED IN THE CITY OF AURORA
FOR INDEX OF SHEETS SEE SHEET NO.2

DESIGN DESIGNATION
1,900 (12) ARTERIAL (PCC-20)
SUBURBAN-STRATEGIC REGIONAL ARTERIAL

US ROUTE 34 TRAFFIC DATA:
ADT = 33,000 (2012)
ADT = 38,000 (2040)
DESIGN SPEED = 45MPH
POSTED SPEED LIMIT = 45MPH

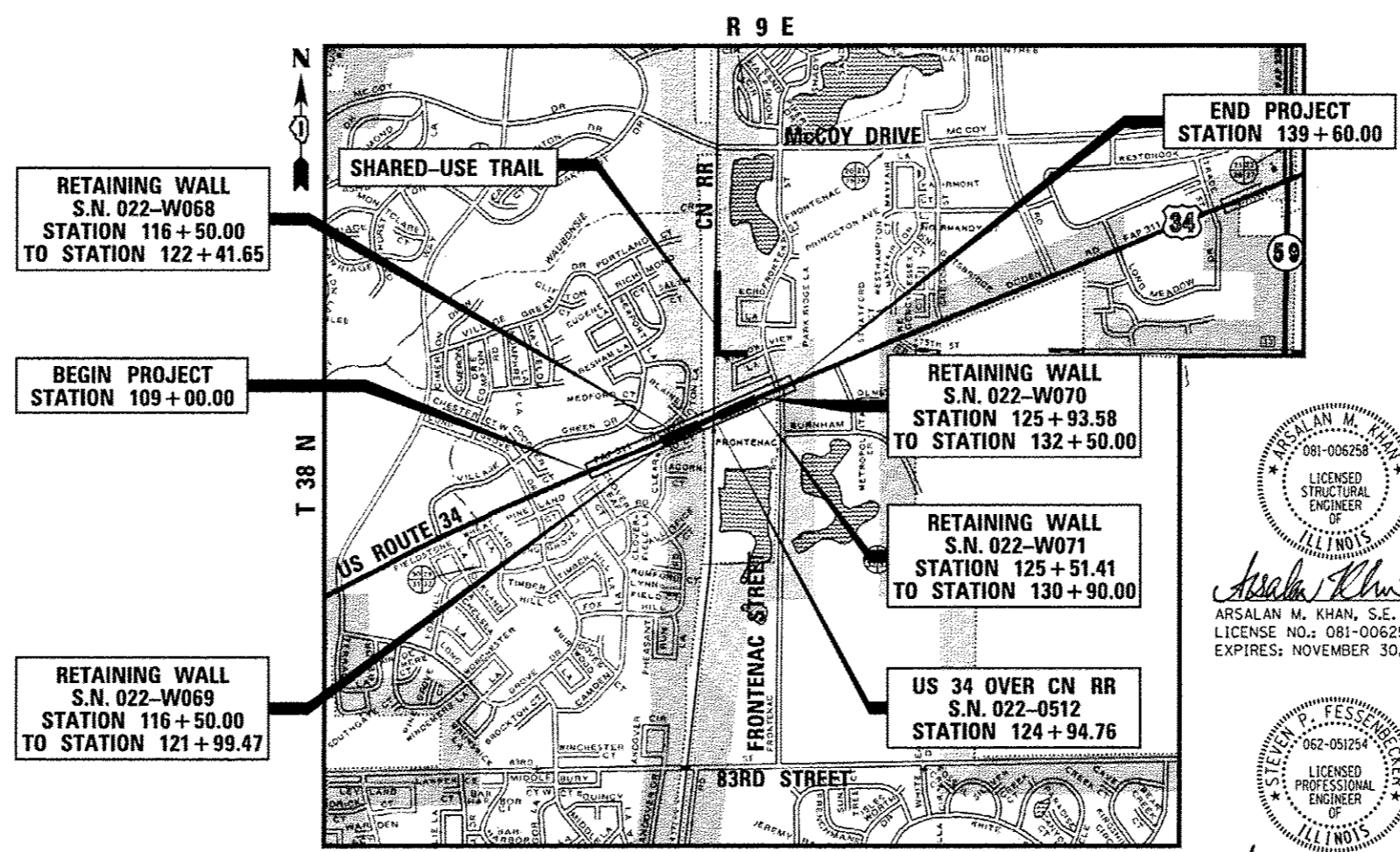


FULL SIZE PLANS HAVE BEEN PREPARED USING STANDARD ENGINEERING SCALES. REDUCED SIZED PLANS WILL NOT CONFORM TO STANDARD SCALES. IN MAKING MEASUREMENTS ON REDUCED PLANS, THE ABOVE SCALES MAY BE USED.

J.U.L.I.E.
JOINT UTILITY LOCATION INFORMATION FOR EXCAVATION
1-800-892-0123
OR 811

PROJECT MANAGER - BRIAN KUTTAB, P.E.
PROJECT ENGINEER - ADDIS ABEBAW

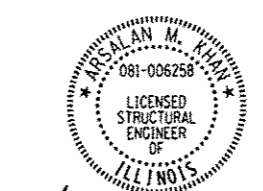
CONTRACT NO. 60R06



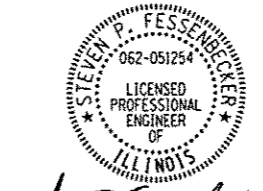
NAPERVILLE TOWNSHIP

LOCATION MAP
NOT TO SCALE

GROSS & NET LENGTH = 3,060 FT. = 0.58 MILE (US RTE 34)
= 1,220 FT. = 0.23 MILE (SHARED-USE TRAIL)



Arsalan Khan 8-15-13
ARSALAN M. KHAN, S.E.
LICENSE NO.: 081-006258
EXPIRES: NOVEMBER 30, 2014



Steven P. Fessenbecker 9-15-13
STEVEN P. FESSENBECKER, P.E.
LICENSE NO.: 062-051254
EXPIRES: NOVEMBER 30, 2013

STATE OF ILLINOIS
DEPARTMENT OF TRANSPORTATION
DIVISION OF HIGHWAYS
SUBMITTED August 16, 2013
John D. Baranzelli
DEPUTY DIRECTOR OF HIGHWAYS, REGION ONE ENGINEER
March 21, 2014
John D. Baranzelli P.E.
acting ENGINEER OF DESIGN AND ENVIRONMENT
March 21, 2014
Omer Osman P.E.
DIRECTOR OF HIGHWAYS, CHIEF ENGINEER

**PRINTED BY THE AUTHORITY
OF THE STATE OF ILLINOIS**

URS 100 S. WACKER DR., SUITE 500 TEL (312)-939-1000
CHICAGO IL, 60606 FAX (312)-939-4198

Rev.